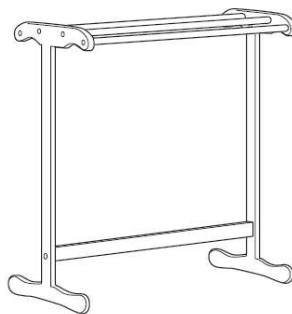


CODING

-572009






ISO 9001:2015
Reg. No. 000435-1-MEX-1-QMS




nuhoom.com

Read the instructions carefully. Remove all the wrappings , staples and straps from the carton. Refer to the hardware and furniture part list for guidance. Make sure that you have all the parts before you start assembling. Place all the wooden furniture parts on a clean, flat and soft surface, such as a carpet or rubbermat to prevent scratches.

CAUTION

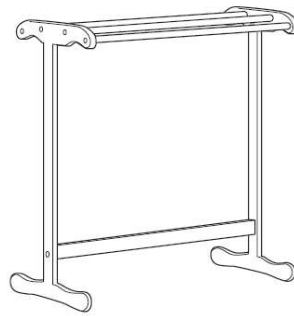
KEEP ALL THE PARTS OUT OF CHILDREN'S REACH.

NO	PHOTO	HARDWARE LIST	QTY
A		JCBCW SCREW M6 X 40MM	10
B		WOOD DOWEL M8 X 30MM	2
C		ALLEN KEY M4	1

ITEM	PHOTO	PART LIST	QTY
1		STICKS	4
2		SIDE LEG	2
3		LEG SUPPORT	1

CODING

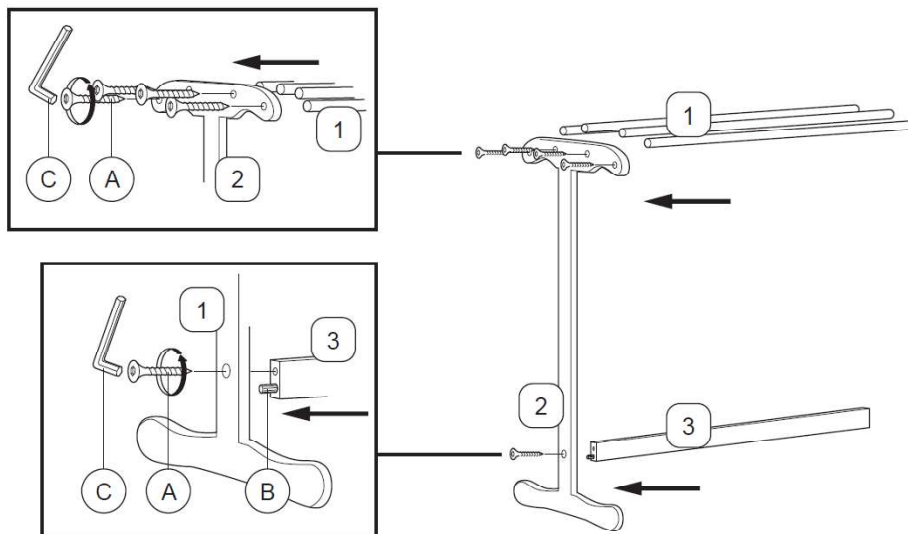
-572009



ISO 9001:2015
Reg. No. 000435-1-ROY-1-QM&S

nuhoom.com

1



2

