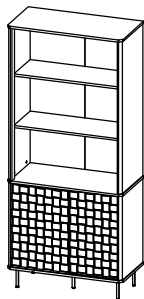


CODING  
- 522091





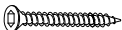

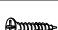
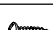
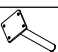




ISO 9001:2015  
Reg. No. 000435-1-007-1-QMS

nuhoom.com

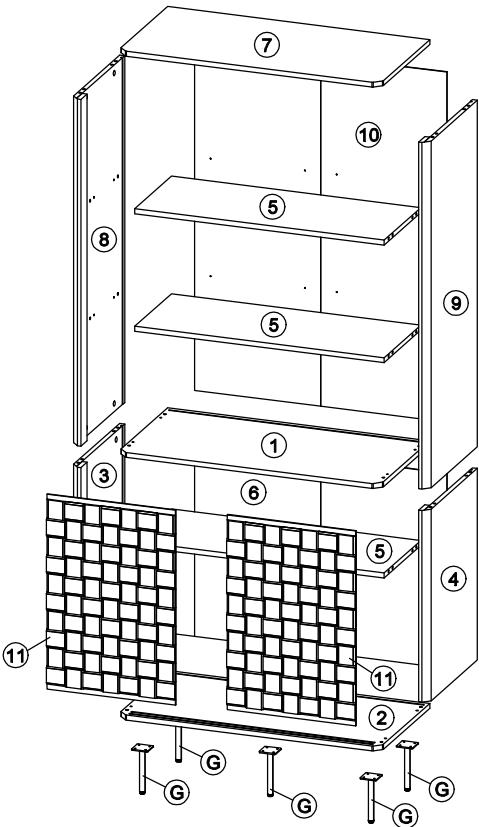
Read the instructions carefully. Remove all the wrappings , staples and straps from the carton. Refer to the hardware and furniture part list for guidance. Make sure that you have all the parts before you start assembling. Place all the wooden furniture parts on a clean, flat and soft surface, such as a carpet or rubbermat to prevent scratches.

CAUTION  
KEEP ALL THE PARTS OUT OF CHILDREN’S REACH.

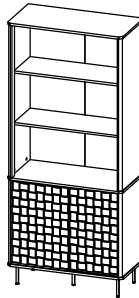
HARDWARE			
A	MINI FIX	A1  A2  A3 	24 SETS
B	M8 X 30MM WOOD DOWEL		28 PCS
C	M6 X 50MM CSK CAP WOOD SCREW		4 PCS
D	ALLEN KEY M4		1 PC
E	M3.5 X 16MM C.B SCREW		20 PCS
F	PAN HEAD SCREW M4 X 16MM		12 PCS
G	METAL CENTER LEG ( 50 x 50 x H140MM )		5 PCS

SELF-PREPARED TOOLS: Tools below are NOT included in package.	
 SCREWDRIVER	 HAMMER

PART LIST		QTY
1	TOP PANEL	1 PC
2	BOTTOM PANEL	1 PC
3	SIDE PANEL (L)	1 PC
4	SIDE PANEL (R)	1 PC
5	MIDDLE PANEL	3 PCS
6	BACK PANEL	1 PC
7	UP TOP PANEL	1 PC
8	UP SIDE PANEL - L	1 PC
9	UP SIDE PANEL - R	1 PC
10	BACK PANEL - UP	1 PC
11	DOOR	2 PCS



**CODING**  
- 522091

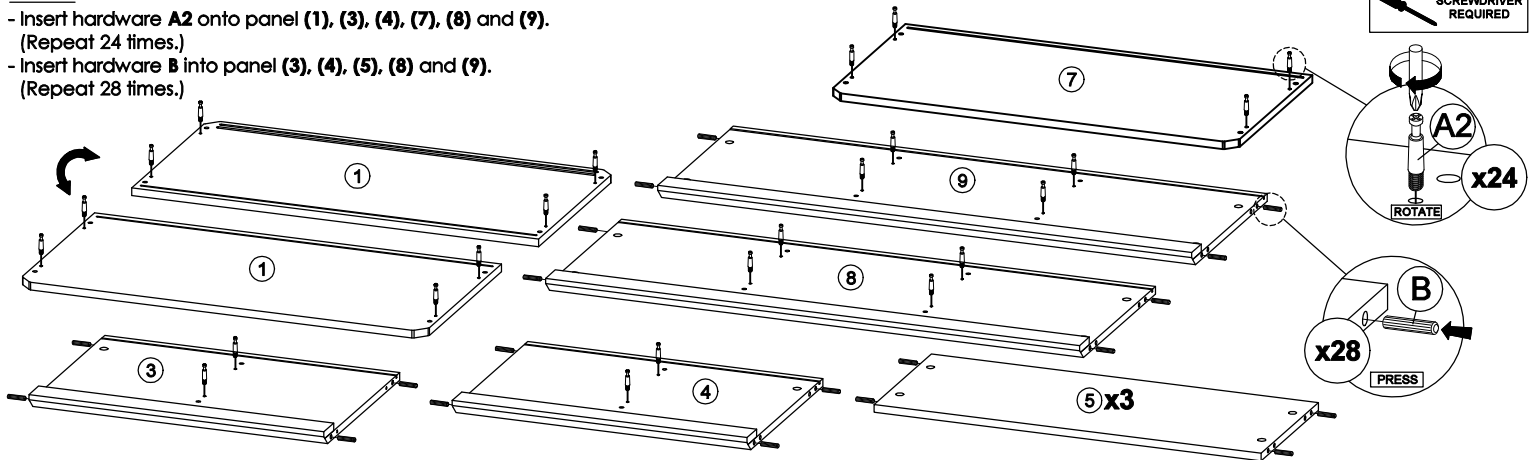


ISO 9001:2015  
Reg. No. 000435-1-INT-1-QMS

**nuhoom.com**

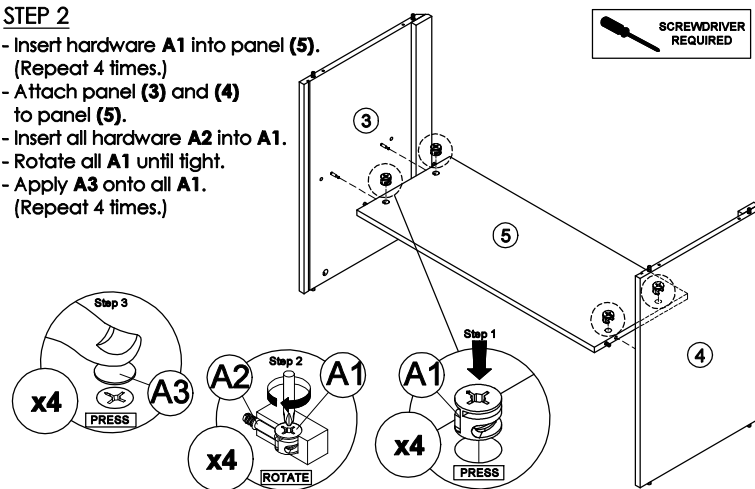
## STEP 1

- Insert hardware **A2** onto panel (1), (3), (4), (7), (8) and (9).  
(Repeat 24 times.)
- Insert hardware **B** into panel (3), (4), (5), (8) and (9).  
(Repeat 28 times.)



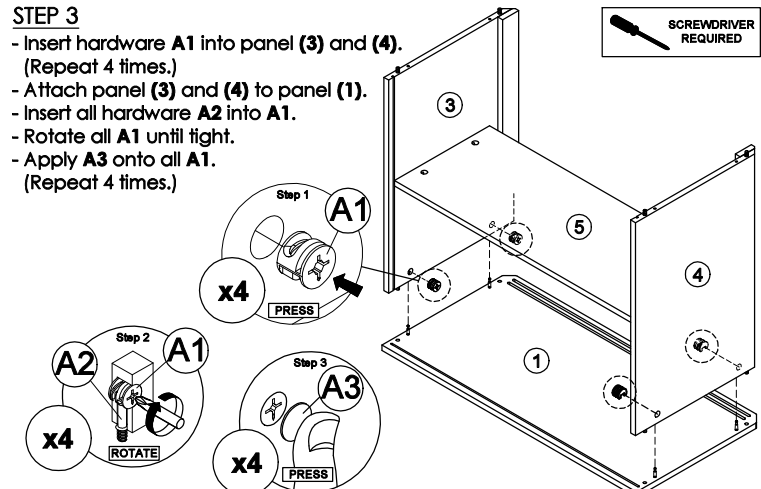
## STEP 2

- Insert hardware **A1** into panel (5).  
(Repeat 4 times.)
- Attach panel (3) and (4) to panel (5).
- Insert all hardware **A2** into **A1**.
- Rotate all **A1** until tight.
- Apply **A3** onto all **A1**.  
(Repeat 4 times.)



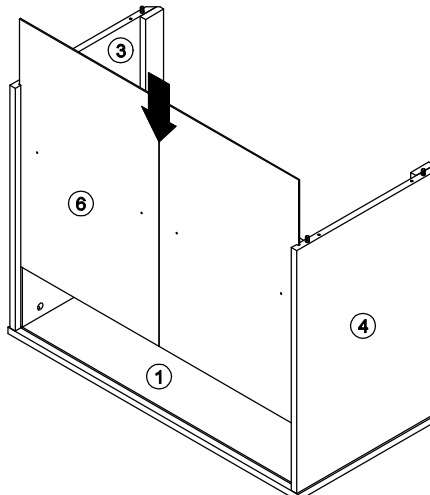
## STEP 3

- Insert hardware **A1** into panel (3) and (4).  
(Repeat 4 times.)
- Attach panel (3) and (4) to panel (1).
- Insert all hardware **A2** into **A1**.
- Rotate all **A1** until tight.
- Apply **A3** onto all **A1**.  
(Repeat 4 times.)



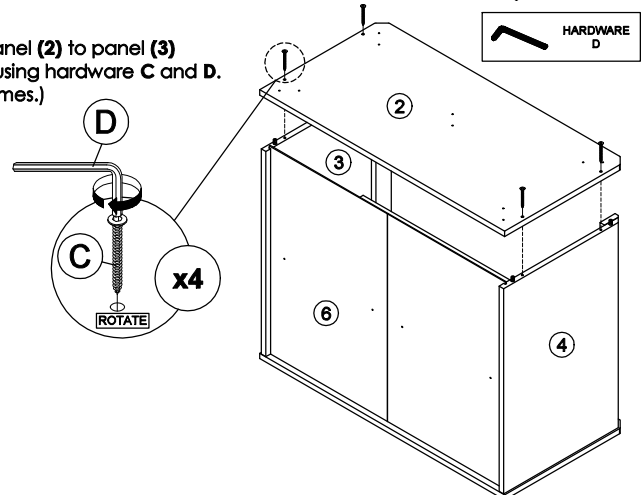
## STEP 4

- Insert the panel (6) along the slot.

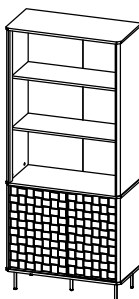


## STEP 5

- Connect panel (2) to panel (3) and (4) by using hardware **C** and **D**.  
(Repeat 4 times.)



**CODING**  
- 522091

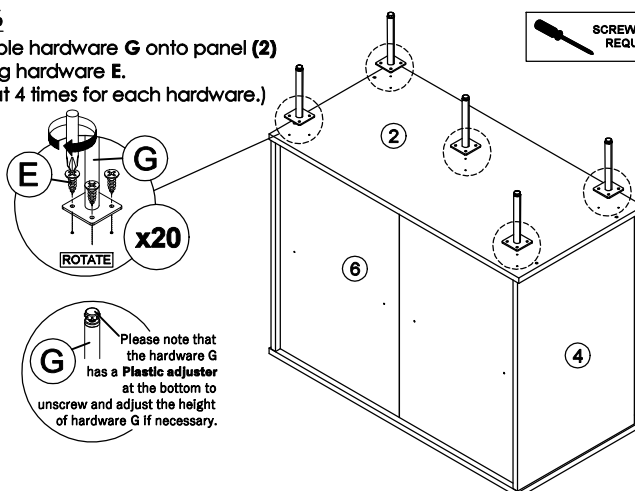


ISO 9001:2015  
Reg. No. 000435-1-MY-1-QMS

nuhoom.com

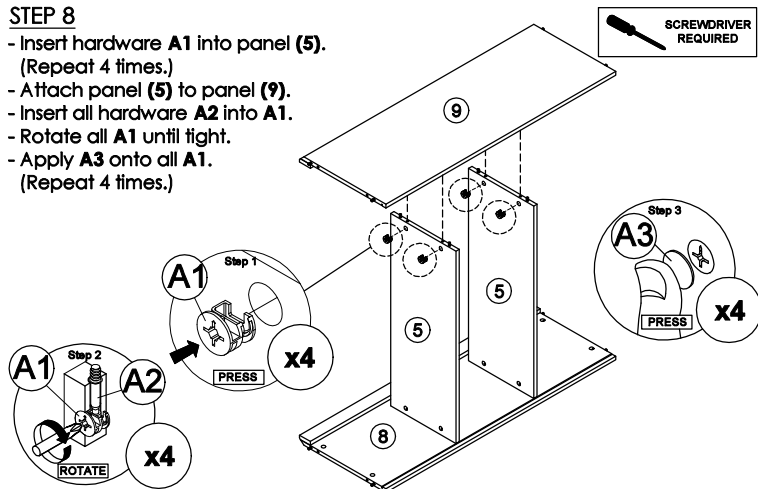
## STEP 6

Assemble hardware **G** onto panel **(2)** by using hardware **E**.  
(Repeat 4 times for each hardware.)



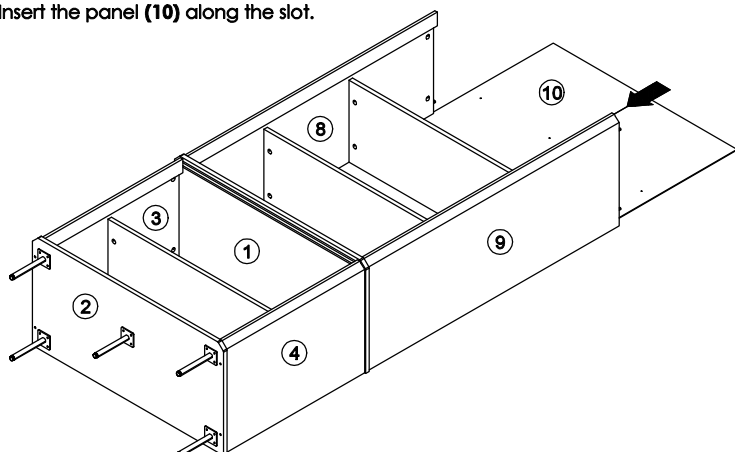
## STEP 8

- Insert hardware **A1** into panel **(5)**.  
(Repeat 4 times.)
- Attach panel **(5)** to panel **(9)**.
- Insert all hardware **A2** into **A1**.
- Rotate all **A1** until tight.
- Apply **A3** onto all **A1**.  
(Repeat 4 times.)



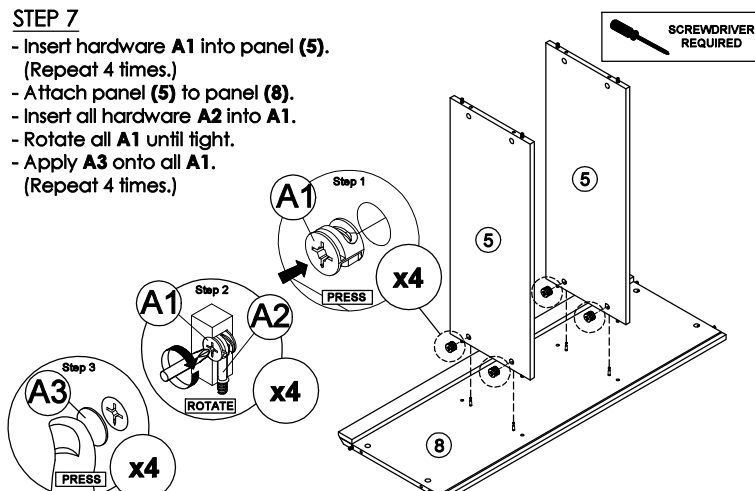
## STEP 10

Insert the panel **(10)** along the slot.



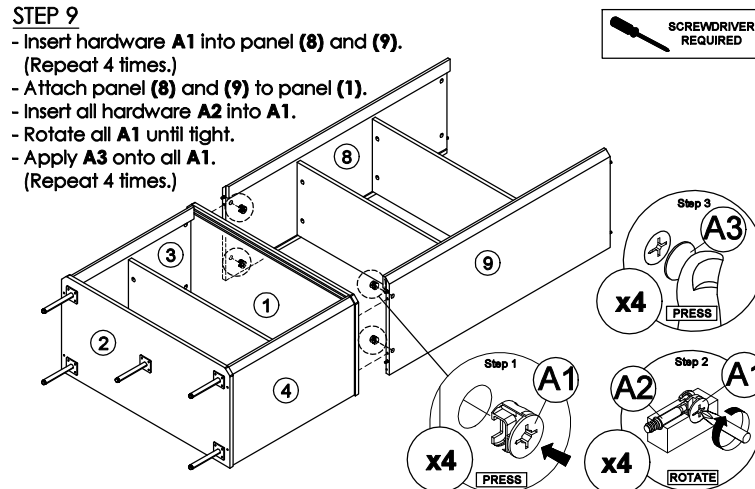
## STEP 7

- Insert hardware **A1** into panel **(5)**.  
(Repeat 4 times.)
- Attach panel **(5)** to panel **(8)**.
- Insert all hardware **A2** into **A1**.
- Rotate all **A1** until tight.
- Apply **A3** onto all **A1**.  
(Repeat 4 times.)



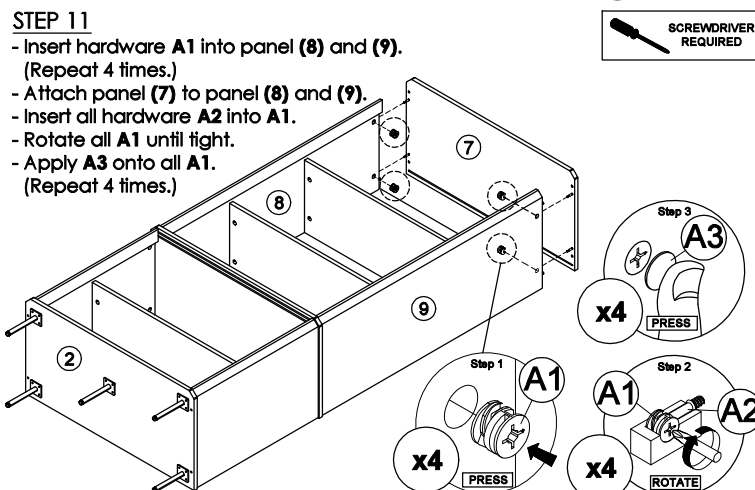
## STEP 9

- Insert hardware **A1** into panel **(8)** and **(9)**.  
(Repeat 4 times.)
- Attach panel **(8)** and **(9)** to panel **(1)**.
- Insert all hardware **A2** into **A1**.
- Rotate all **A1** until tight.
- Apply **A3** onto all **A1**.  
(Repeat 4 times.)

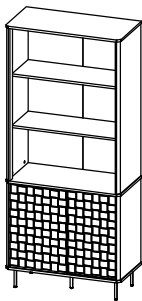


## STEP 11

- Insert hardware **A1** into panel **(8)** and **(9)**.  
(Repeat 4 times.)
- Attach panel **(7)** to panel **(8)** and **(9)**.
- Insert all hardware **A2** into **A1**.
- Rotate all **A1** until tight.
- Apply **A3** onto all **A1**.  
(Repeat 4 times.)



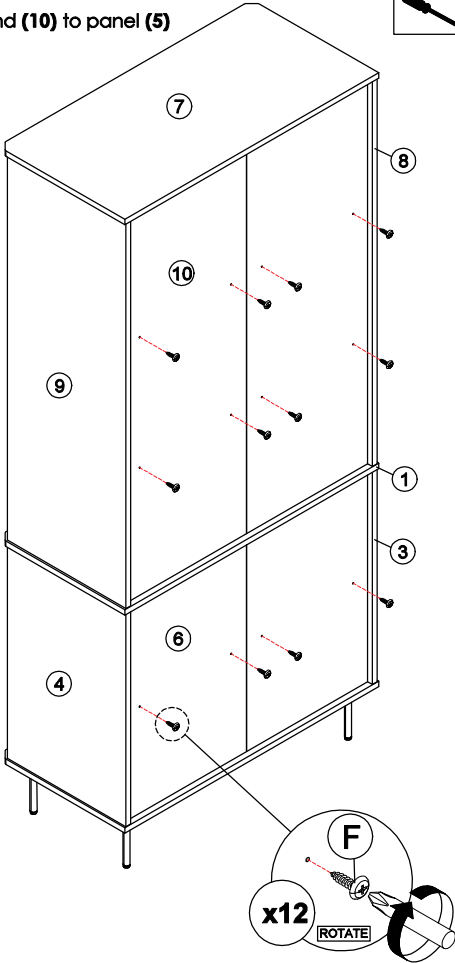
CODING  
- 522091



ISO 9001:2015  
Reg. No. 000435-1-001-1-QM8

nuhoom.com

**STEP 12**  
Connect panel (6) and (10) to panel (5) by using hardware F. (Repeat 12 times.)



**STEP 13**  
- Insert one door in the back groove & another door into front groove.  
- Insert the panel (11) in the top groove first, then enter through the bottom groove.

