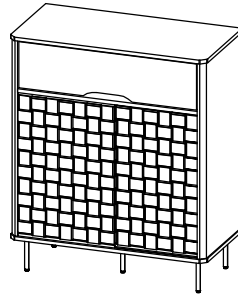


CODING
- 522090



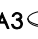

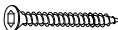






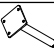


ISO 9001:2015
Reg. No. 000435-1-RTY-1-QMS



nuhoom.com

Read the instructions carefully. Remove all the wrappings, staples and straps from the carton. Refer to the hardware and furniture part list for guidance. Make sure that you have all the parts before you start assembling. Place all the wooden furniture parts on a clean, flat and soft surface, such as a carpet or rubbermat to prevent scratches.

CAUTION
KEEP ALL THE PARTS OUT OF CHILDREN'S REACH.

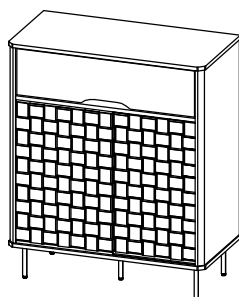
HARDWARE			
A	MINI FIX	A1  A2  A3 	12 SETS
B	M8 X 30MM WOOD DOWEL		14 PCS
C	M6 X 50MM CSK CAP WOOD SCREW		4 PCS
D	ALLEN KEY M4		1 PC
E	M3.5 X 16MM C.B SCREW		36 PCS
F	M4 X 38MM C.B SCREW		4 PCS
G	METAL SHELF SUPPORT		8 PCS
H	(S059) L BRACKET		2 PCS
I	PAN HEAD SCREW M4 X 16MM		4 PCS
J	14" DRAWER SLIDE	J1 (L/R) J2 (L/R)	1 SET
K	METAL CENTER LEG (50 x 50 x H140MM)		5 PCS

SELF-PREPARED TOOLS: Tools below are NOT included in package.

 SCREWDRIVER	 HAMMER
---	--

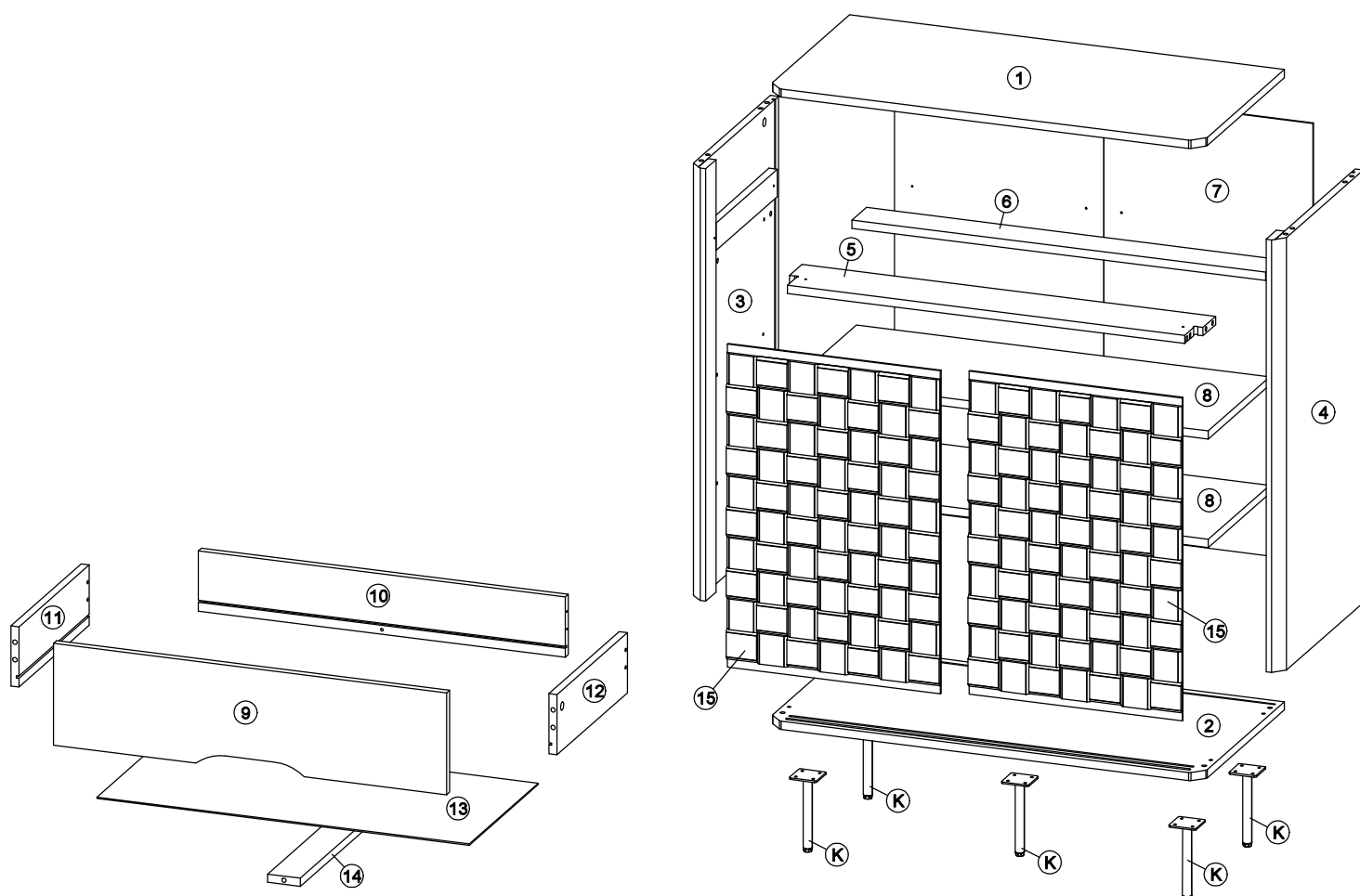
PART LIST		QTY
1	TOP PANEL	1 PC
2	BOTTOM PANEL	1 PC
3	SIDE PANEL (L)	1 PC
4	SIDE PANEL (R)	1 PC
5	SUPPORT BAR - FRONT	1 PC
6	SUPPORT BAR - BACK	1 PC
7	BACK PANEL	1 PC
8	SHELF PANEL	2 PCS
9	DRAWER FRONT	1 PC
10	DRAWER BACK	1 PC
11	DRAWER SIDE (L)	1 PC
12	DRAWER SIDE (R)	1 PC
13	DRAWER BOTTOM	1 PC
14	DRAWER BONE	1 PC
15	DOOR	2 PCS

CODING
- 522090



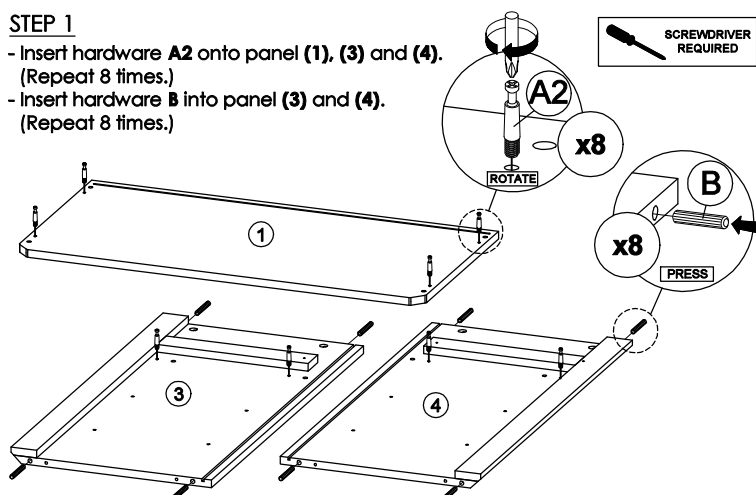
ISO 9001:2015
Reg. No. 000435-1-0017-1-QMS

nuhoom.com



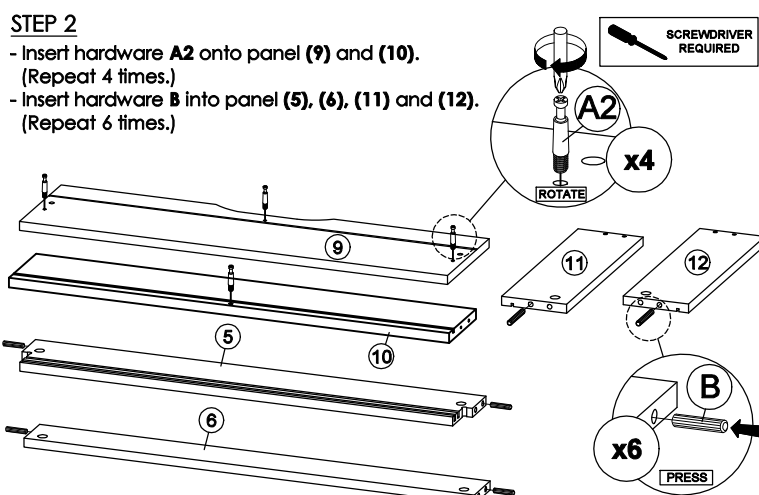
STEP 1

- Insert hardware **A2** onto panel (1), (3) and (4).
(Repeat 8 times.)
- Insert hardware **B** into panel (3) and (4).
(Repeat 8 times.)

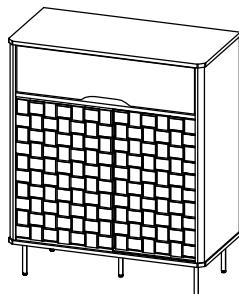


STEP 2

- Insert hardware **A2** onto panel (9) and (10).
(Repeat 4 times.)
- Insert hardware **B** into panel (5), (6), (11) and (12).
(Repeat 6 times.)



CODING
- 522090

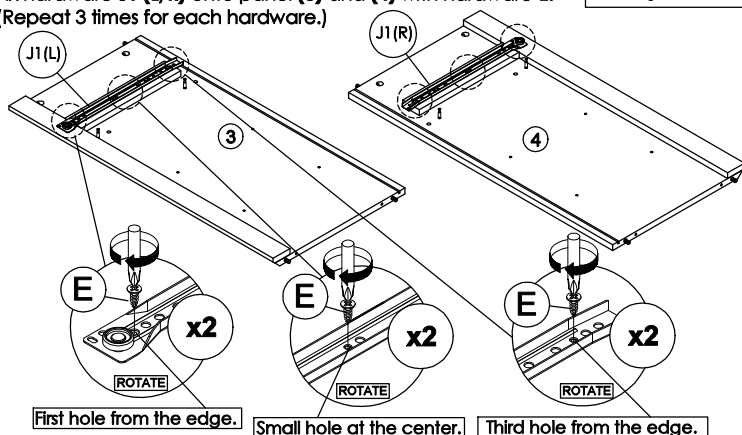


ISO 9001:2015
Reg. No. 000435-1-001-1-QMS

nuhoom.com

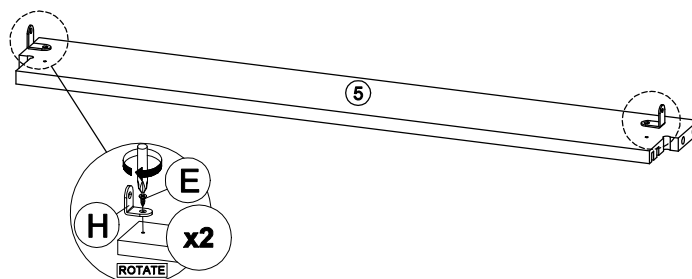
STEP 3

Fix hardware **J1 (L/R)** onto panel **(3)** and **(4)** with hardware **E**.
(Repeat 3 times for each hardware.)



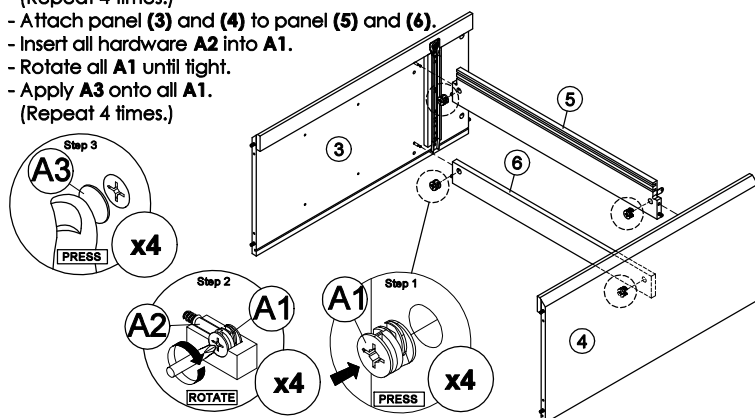
STEP 4

Connect hardware **H** to panel **(5)** with hardware **E**.
(Repeat 2 times.)



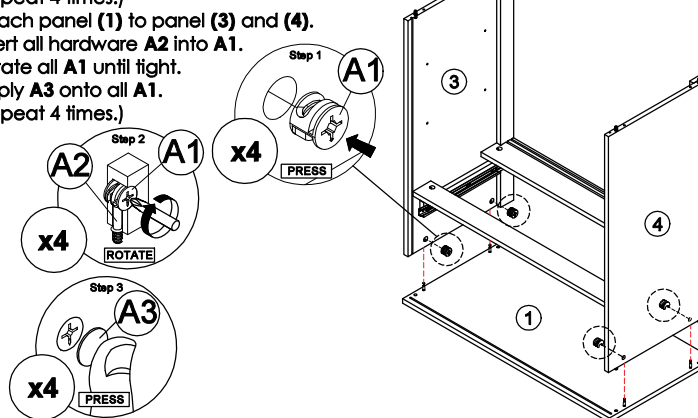
STEP 5

- Insert hardware **A1** into panel **(5)** and **(6)**.
(Repeat 4 times.)
- Attach panel **(3)** and **(4)** to panel **(5)** and **(6)**.
- Insert all hardware **A2** into **A1**.
- Rotate all **A1** until tight.
- Apply **A3** onto all **A1**.
(Repeat 4 times.)



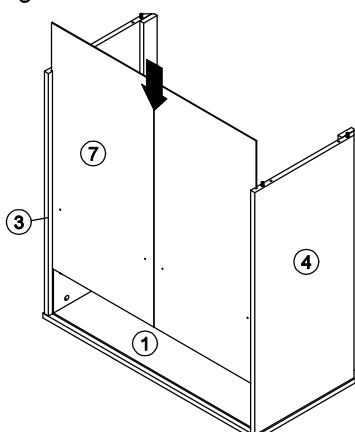
STEP 6

- Insert hardware **A1** into panel **(3)** and **(4)**.
(Repeat 4 times.)
- Attach panel **(1)** to panel **(3)** and **(4)**.
- Insert all hardware **A2** into **A1**.
- Rotate all **A1** until tight.
- Apply **A3** onto all **A1**.
(Repeat 4 times.)



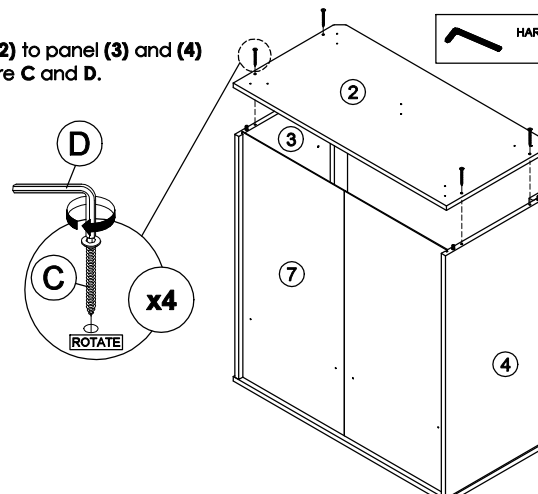
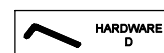
STEP 7

Insert the panel **(7)** along the slot.

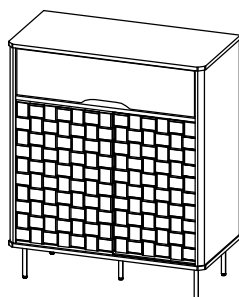


STEP 8

Connect panel **(2)** to panel **(3)** and **(4)**
by using hardware **C** and **D**.
(Repeat 4 times.)



CODING
- 522090

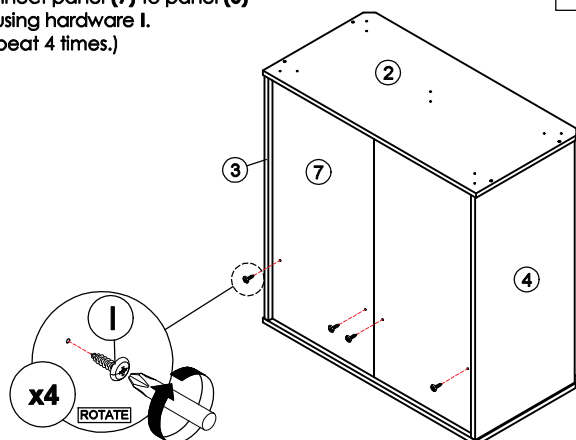


ISO 9001:2015
Reg. No. 000435-1-MY-1-QMS

nuhoom.com

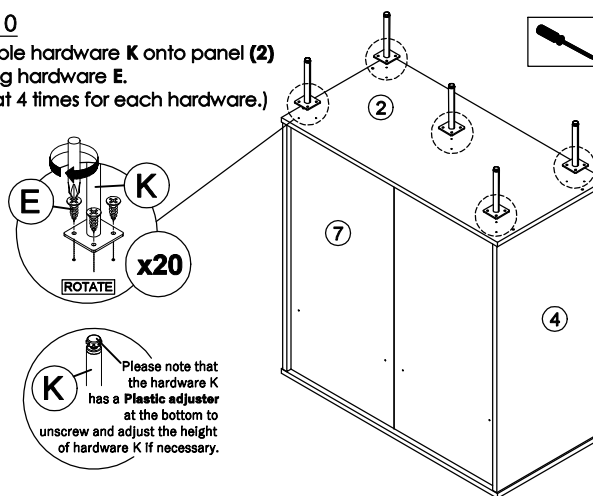
STEP 9

Connect panel (7) to panel (6) by using hardware I. (Repeat 4 times.)



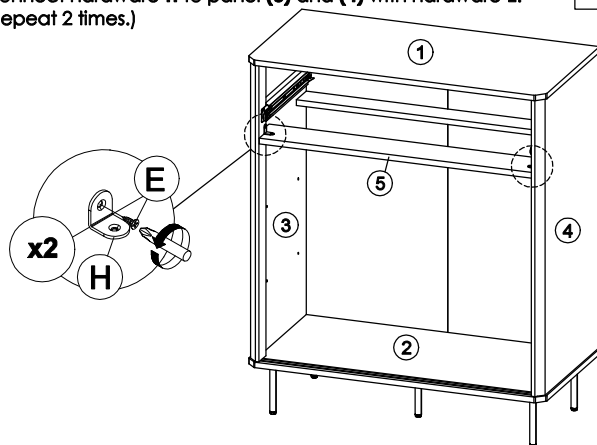
STEP 10

Assemble hardware K onto panel (2) by using hardware E. (Repeat 4 times for each hardware.)



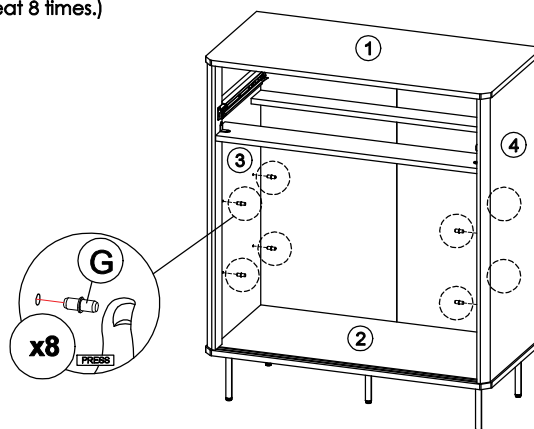
STEP 11

Connect hardware H to panel (3) and (4) with hardware E. (Repeat 2 times.)



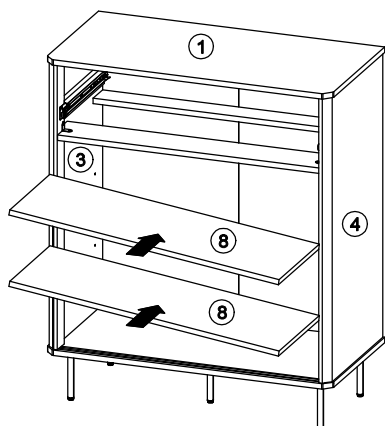
STEP 12

Insert hardware G into mounting positions on panel (3) and (4) by hand. (Repeat 8 times.)



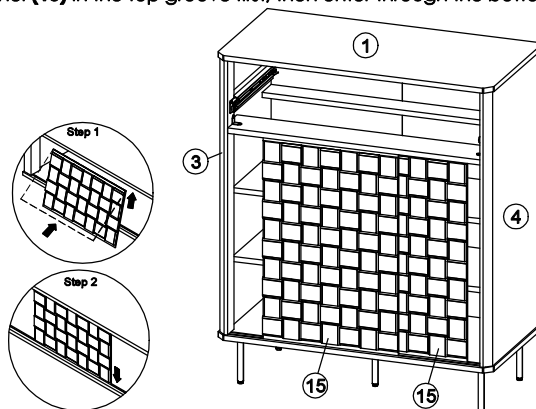
STEP 13

Assemble the panel (8) into between panel (3) and (4). (Repeat 2 times.)

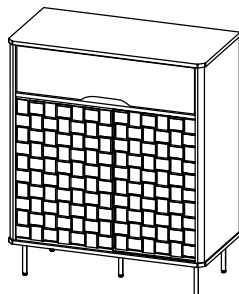


STEP 14

- Insert one door into back groove.
- Insert the panel (15) in the top groove first, then enter through the bottom groove.



CODING
- 522090

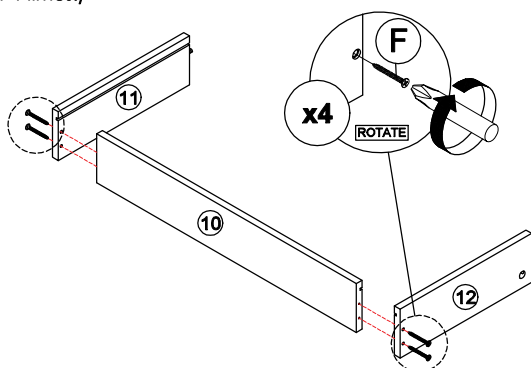


ISO 9001:2015
Reg. No. 000435-1-001-1-QMS

nuhoom.com

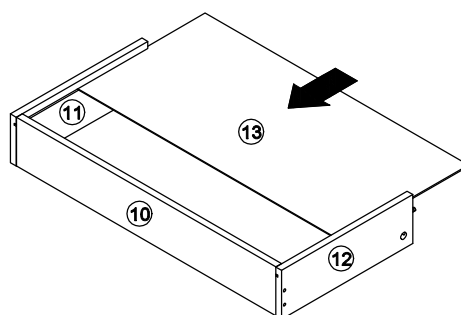
STEP 15

Assemble panel (10) with panel (11) and (12) by using hardware F.
(Repeat 4 times.)



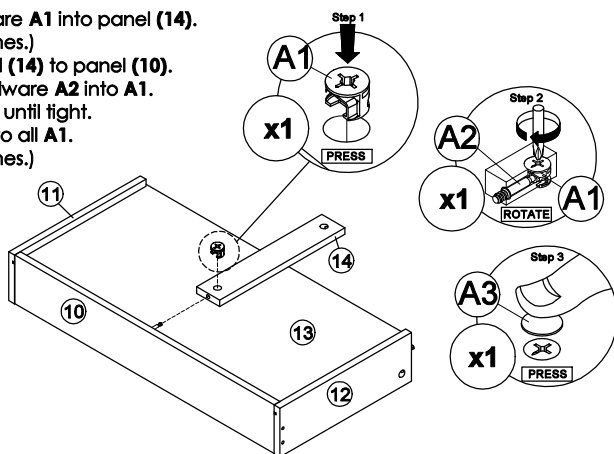
STEP 16

Insert the panel (13) along the slot.



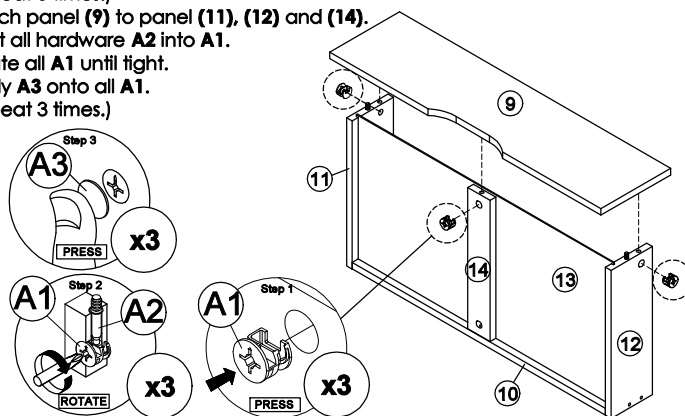
STEP 17

- Insert hardware A1 into panel (14).
(Repeat 1 times.)
- Attach panel (14) to panel (10).
- Insert all hardware A2 into A1.
- Rotate all A1 until tight.
- Apply A3 onto all A1.
(Repeat 1 times.)



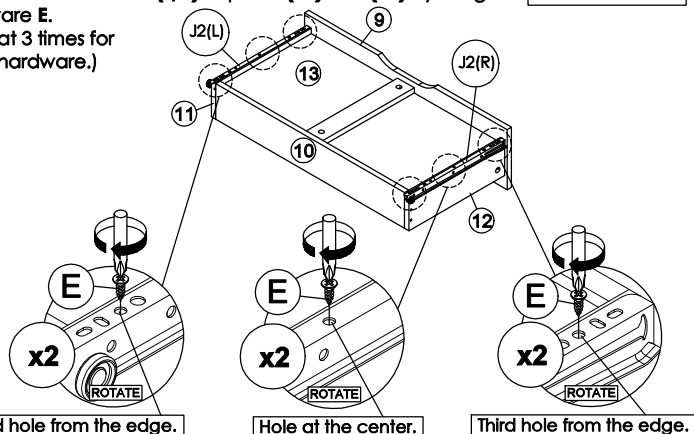
STEP 18

- Insert hardware A1 into panel (11), (12) and (14).
(Repeat 3 times.)
- Attach panel (9) to panel (11), (12) and (14).
- Insert all hardware A2 into A1.
- Rotate all A1 until tight.
- Apply A3 onto all A1.
(Repeat 3 times.)



STEP 19

Assemble hardware J2 (L/R) to panel (11) and (12) by using hardware E.
(Repeat 3 times for each hardware.)



STEP 20

Put all the drawer in place along the drawer slides.

