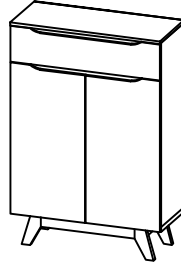


CODING

-372082 -372083
 -372048 -372081



ISO 9001:2015
 Reg. No. 000435-1-MT-1-QMS

nuhoom.com

Read the instructions carefully. Remove all the wrappings, staples and straps from the carton. Refer to the hardware and furniture part list for guidance. Make sure that you have all the parts before you start assembling. Place all the wooden furniture parts on a clean, flat and soft surface, such as a carpet or rubbermat to prevent scratches.

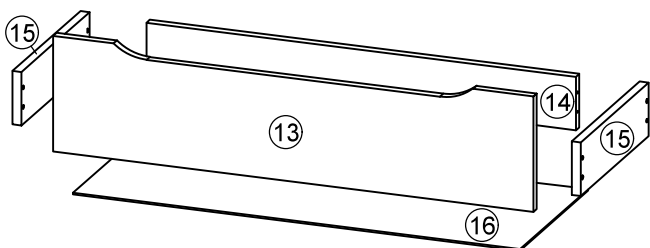
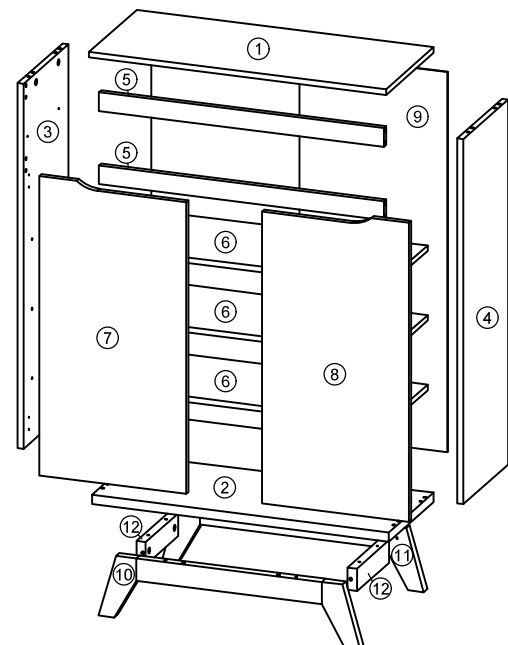
CAUTION
 KEEP ALL THE PARTS OUT OF CHILDREN'S REACH.

PART LIST		QTY
1	TOP PANEL	1 PC
2	BOTTOM PANEL	1 PC
3	SIDE PANEL (L)	1 PC
4	SIDE PANEL (R)	1 PC
5	BONE PANEL	2 PCS
6	SHELF PANEL	3 PCS
7	DOOR PANEL (L)	1 PC
8	DOOR PANEL (R)	1 PC
9	BACK PANEL	1 PC
10	APRON FRONT	1 PC
11	APRON BACK	1 PC
12	APRON BONE	2 PCS
13	DRAWER FRONT	1 PC
14	DRAWER BACK	1 PC
15	DRAWER SIDE	2 PCS
16	DRAWER BOTTOM	1 PC

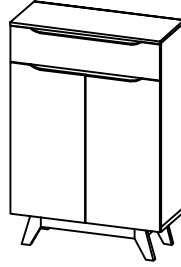
HARDWARE			
A	MINI FIX	A1 A2 A3	8 SETS
B	M8 X 30MM WOOD DOWEL		20 PCS
C	M6 X 60MM CSK CAP WOOD SCREW		4 PCS
D	ALLEN KEY M4		1 PC
E	M3.5 X 16MM C.B SCREW		40 PCS
F	M4 X 38MM C.B SCREW		16 PCS
G	METAL SHELF SUPPORT		12 PCS
H	5/8 NAIL		30 PCS
I	5/8 PVC NAIL LEG		4 PCS
J	SOFT CLOSING 5/8 HINGES		4 PCS
K	12" DRAWER SLIDE	K1 (L/R) K2 (L/R)	1 SET
L	ONE HOLE L BRACKET (2MM)		2 PCS

TIPPING PACK WITH A1		1 SET
----------------------	--	-------

SELF-PREPARED TOOLS: Tools below are NOT included in package.	
SCREWDRIVER	HAMMER



CODING
- 372048

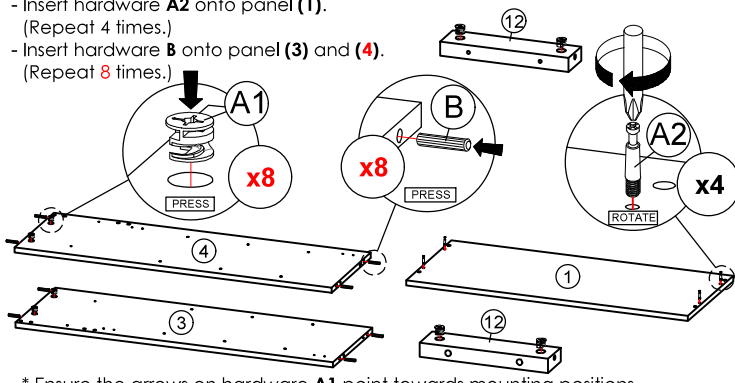


ISO 9001:2015
Reg. No. 00045-1-MT-1-QMS

nuhoom.com

STEP 1

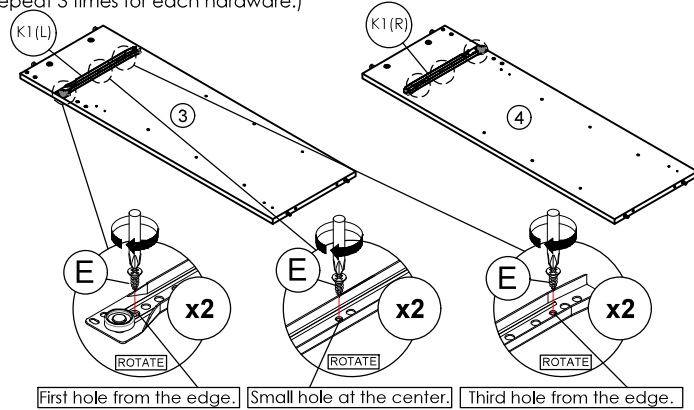
- Insert hardware **A1** onto panel (3), (4) and (12).
(Repeat 8 times.)
- Insert hardware **A2** onto panel (1).
(Repeat 4 times.)
- Insert hardware **B** onto panel (3) and (4).
(Repeat 8 times.)



* Ensure the arrows on hardware **A1** point towards mounting positions.

STEP 3

- Fix hardware **K1 (L/R)** into panel (3) and (4) with hardware **E**.
(Repeat 3 times for each hardware.)



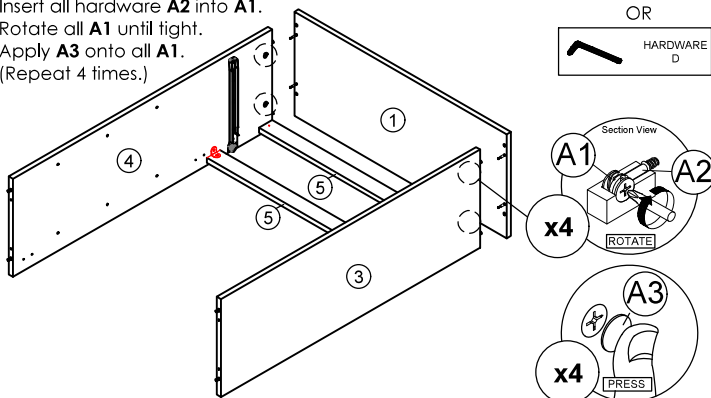
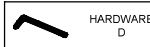
First hole from the edge. Small hole at the center. Third hole from the edge.

STEP 5

- Attach panel (1) to panel (3) and (4).
- Insert all hardware **A2** into **A1**.
- Rotate all **A1** until tight.
- Apply **A3** onto all **A1**.
(Repeat 4 times.)



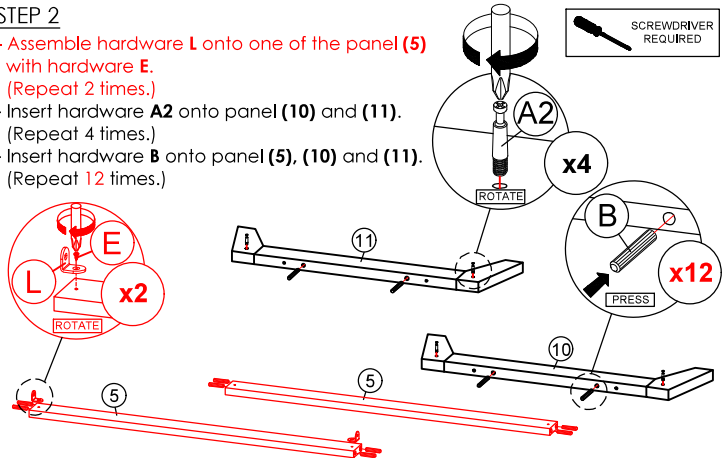
OR



* In this step hardware **A1**, **A2** and **B** are pre-inserted.

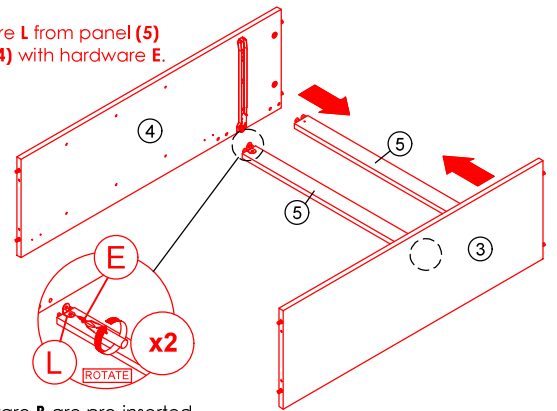
STEP 2

- Assemble hardware **L** onto one of the panel (5) with hardware **E**.
(Repeat 2 times.)
- Insert hardware **A2** onto panel (10) and (11).
(Repeat 4 times.)
- Insert hardware **B** onto panel (5), (10) and (11).
(Repeat 12 times.)



STEP 4

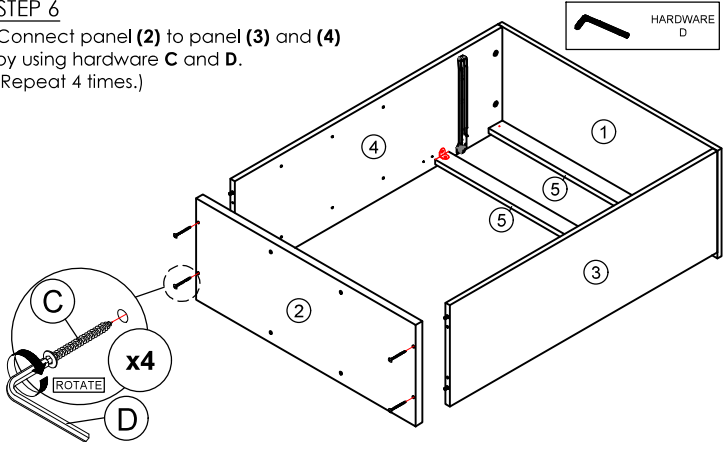
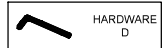
- Attach panel (3) and (4) to panel (5).
(Repeat 2 times.)
- Assemble hardware **L** from panel (5) to panel (3) and (4) with hardware **E**.
(Repeat 2 times.)



* In this step hardware **B** are pre-inserted.

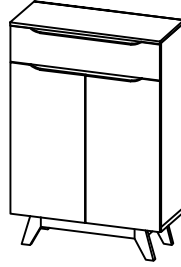
STEP 6

- Connect panel (2) to panel (3) and (4) by using hardware **C** and **D**.
(Repeat 4 times.)



* In this step hardware **B** are pre-inserted.

CODING
- 372048

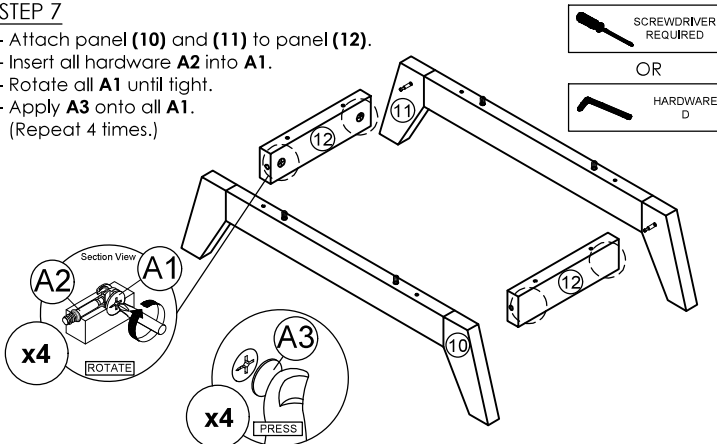


ISO 9001:2015
Reg. No. 000435-1-MT-1-QMS

nuhoom.com

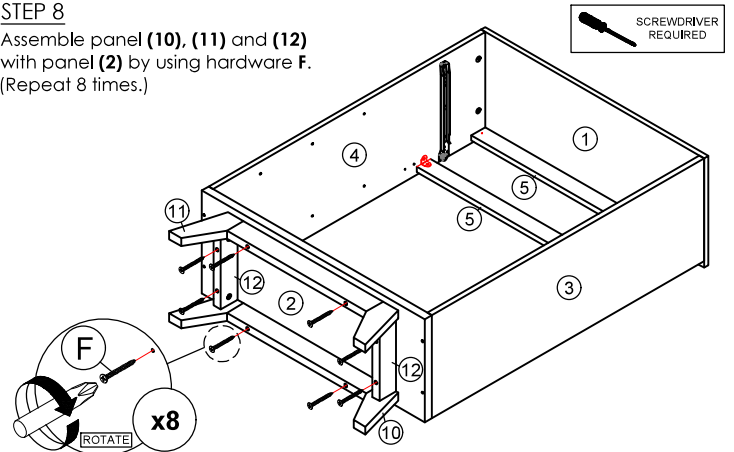
STEP 7

- Attach panel (10) and (11) to panel (12).
- Insert all hardware A2 into A1.
- Rotate all A1 until tight.
- Apply A3 onto all A1.
- (Repeat 4 times.)



STEP 8

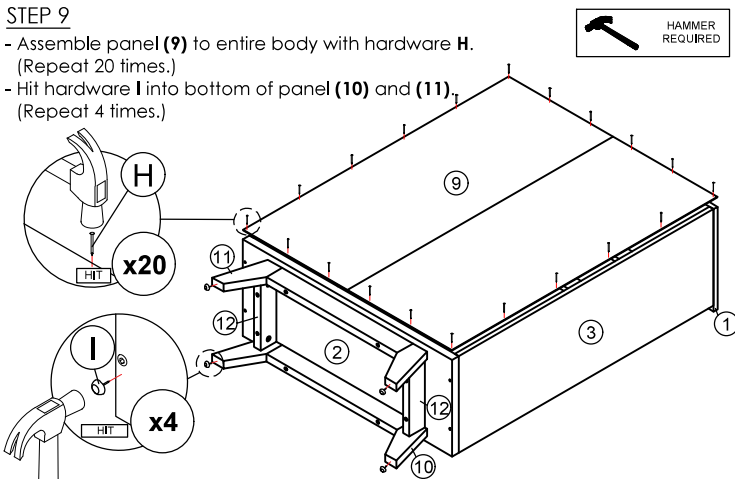
- Assemble panel (10), (11) and (12) with panel (2) by using hardware F.
- (Repeat 8 times.)



* In this step hardware A1, A2 and B are pre-inserted.

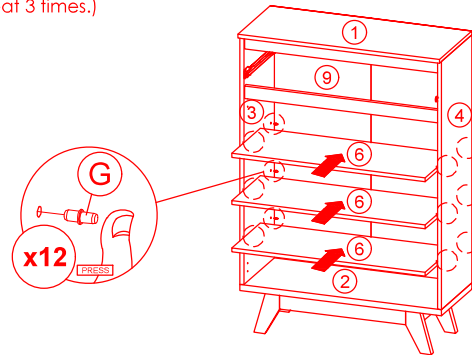
STEP 9

- Assemble panel (9) to entire body with hardware H.
- (Repeat 20 times.)
- Hit hardware I into bottom of panel (10) and (11).
- (Repeat 4 times.)



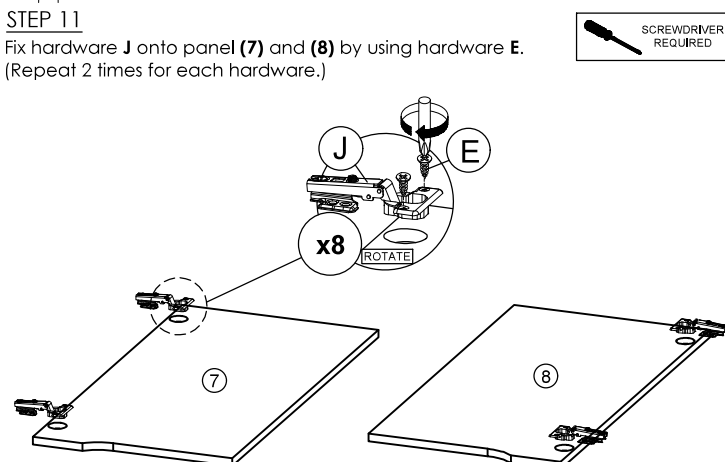
STEP 10

- Insert hardware G into mounting positions on panel (3) and (4) by hand.
- (Repeat 12 times.)
- Assemble panel (6) into between panel (3) and (4).
- (Repeat 3 times.)



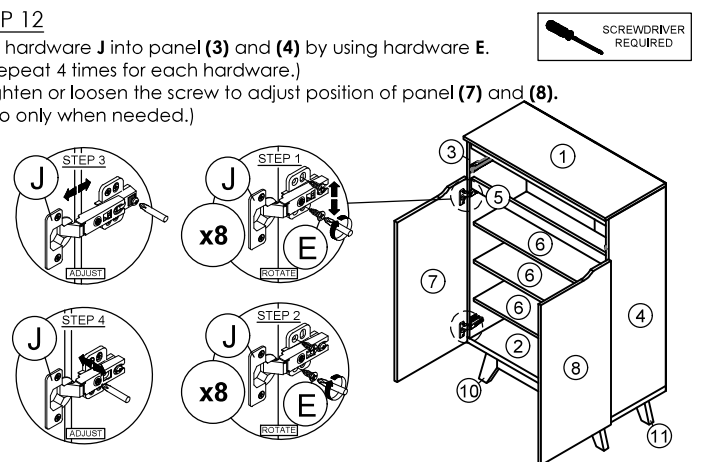
STEP 11

- Fix hardware J onto panel (7) and (8) by using hardware E.
- (Repeat 2 times for each hardware.)



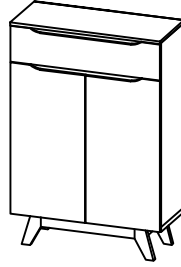
STEP 12

- Fix hardware J into panel (3) and (4) by using hardware E.
- (Repeat 4 times for each hardware.)
- Tighten or loosen the screw to adjust position of panel (7) and (8).
- (Do only when needed.)



* In this step hardware J have been assembled in panel (7) and (8).

CODING
- 372048



ISO 9001:2015
Reg. No. 000435-1-MT-1-Q&S

nuhoom.com

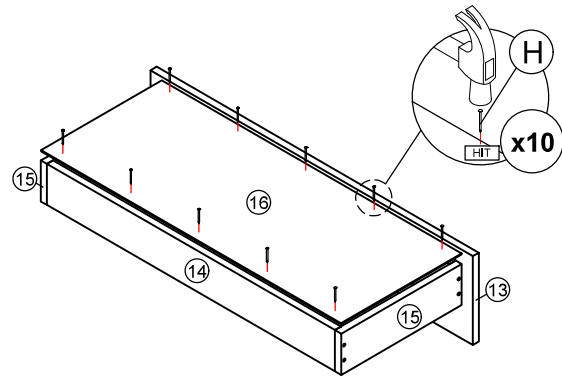
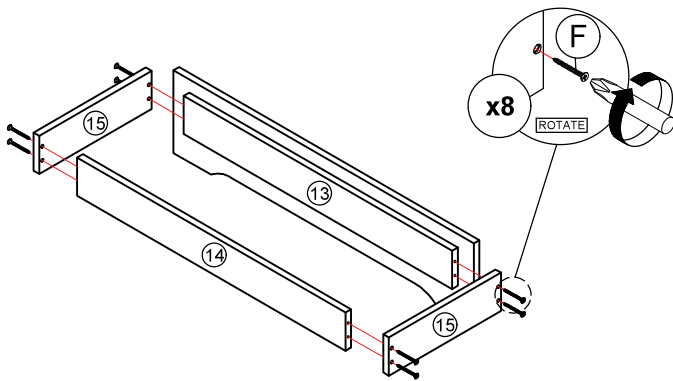
STEP 13

Assemble panel (15) to panel (13) and (14) by using hardware F. (Repeat 8 times.)



STEP 14

Assemble panel (16) to entire body with hardware H. (Repeat 10 times.)



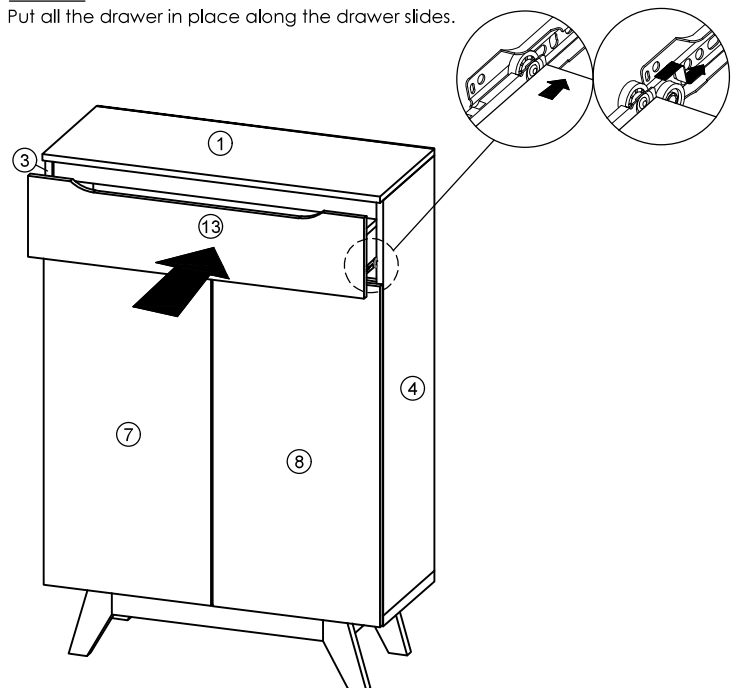
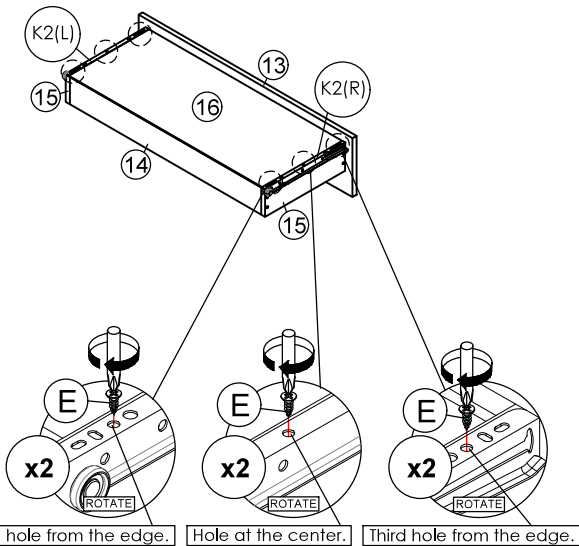
STEP 15

Assemble hardware K2 (L/R) to panel (16) by using hardware E. (Repeat 3 times for each hardware.)



STEP 16

Put all the drawer in place along the drawer slides.



*Hardware K2 (L/R) shall be leaning against panel (13) when assembling.