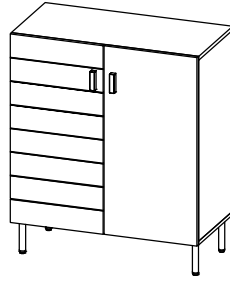


CODING
- 372051



ISO 9001:2015
Reg. No. 00005-1-2017-1-008

nuhoom.com

Read the instructions carefully. Remove all the wrappings, staples and straps from the carton. Refer to the hardware and furniture part list for guidance. Make sure that you have all the parts before you start assembling. Place all the wooden furniture parts on a clean, flat and soft surface, such as a carpet or rubbermat to prevent scratches.

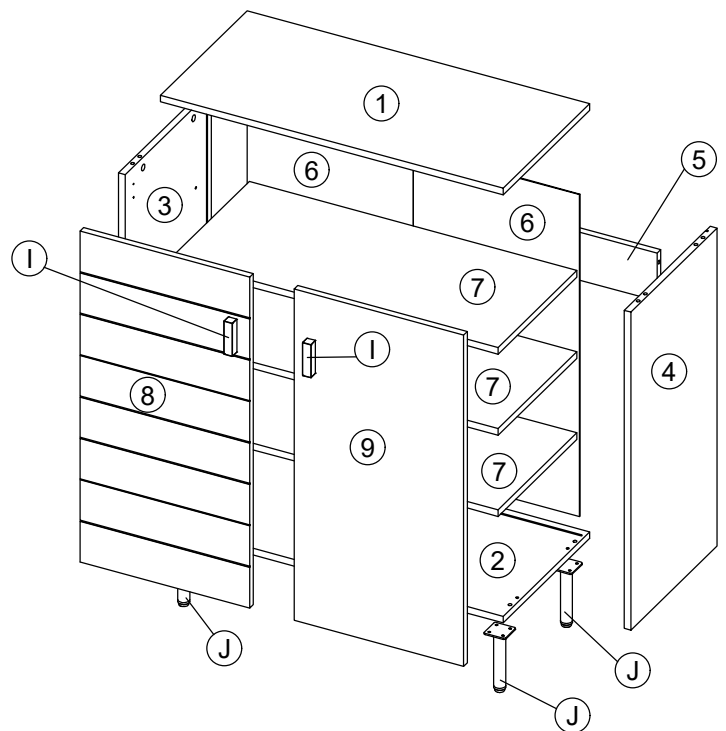
CAUTION
KEEP ALL THE PARTS OUT OF CHILDREN'S REACH.

| HARDWARE | | | |
|--------------------------|--|------------|--------|
| A | MINI FIX | A1 A2 A3 | 8 SETS |
| B | M8 X 30MM WOOD DOWEL | | 8 PCS |
| C | M6 X 50MM CSK CAP WOOD SCREW | | 4 PCS |
| D | ALLEN KEY M4 | | 1 PC |
| E | M3.5 X 16MM C.B SCREW | | 40 PCS |
| F | M4 X 32MM C.B SCREW | | 4 PCS |
| G | SOFT CLOSING 5/8 HINGES | | 4 PCS |
| H | METAL SHELF SUPPORT | | 12 PCS |
| I | WOOD HANDLE (80MM) | | 2 PCS |
| J | METAL LEG 50 x 50 x H145MM (CENTER ROUND Ø25) | | 4 PCS |
| TIPPING PACK WITH AI | | | 2 SETS |

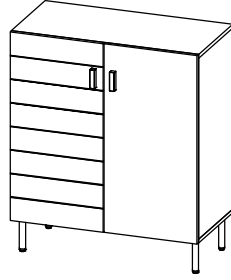
| SELF-PREPARED TOOLS: Tools below are NOT included in package. | |
|---|--------|
| SCREWDRIVER | HAMMER |

| PART LIST | | QTY |
|-----------|------------------|-------|
| 1 | TOP PANEL | 1 PC |
| 2 | BOTTOM PANEL | 1 PC |
| 3 | SIDE PANEL (L) | 1 PC |
| 4 | SIDE PANEL (R) | 1 PC |
| 5 | BACK SUPPORT | 1 PC |
| 6 | BACK PANEL | 1 PC |
| 7 | SHELF PANEL | 3 PCS |
| 8 | DOOR PANEL LEFT | 1 PC |
| 9 | DOOR PANEL RIGHT | 1 PC |

| SELF-PREPARED TOOLS: Tools below are NOT included in package. | |
|---|--------|
| SCREWDRIVER | HAMMER |



CODING
- 372051

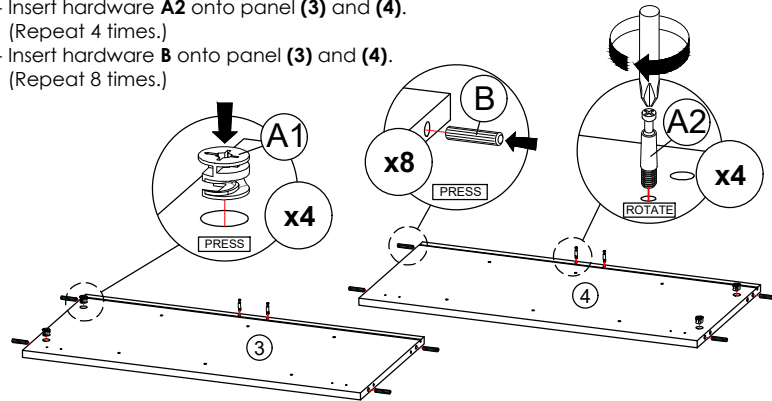


ISO 9001:2015
Reg. No. 00045-1-2017-1-QMS

nuhoom.com

STEP 1

- Insert hardware **A1** onto panel **(3)** and **(4)**. (Repeat 4 times.)
- Insert hardware **A2** onto panel **(3)** and **(4)**. (Repeat 4 times.)
- Insert hardware **B** onto panel **(3)** and **(4)**. (Repeat 8 times.)



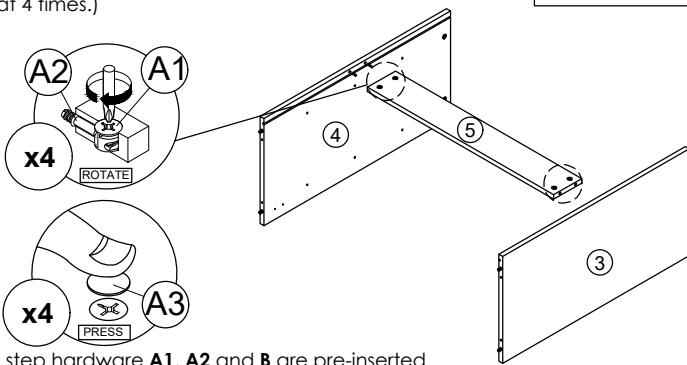
* Ensure the arrows on hardware **A1** point towards mounting positions.

STEP 3

- Attach panel **(5)** to panel **(3)** and **(4)**.
- Insert all hardware **A2** into **A1**.
- Rotate all **A1** until tight.
- Apply **A3** onto all **A1**. (Repeat 4 times.)



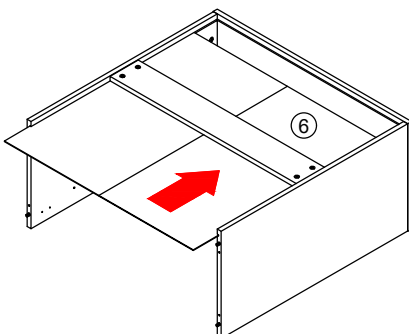
OR



* In this step hardware **A1**, **A2** and **B** are pre-inserted.

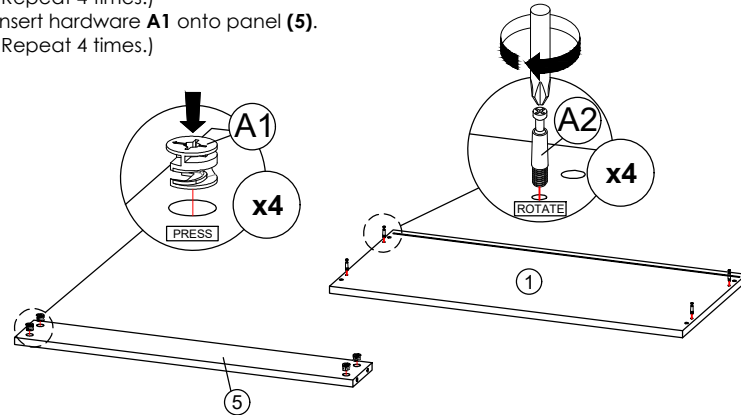
STEP 5

- Insert the panel **(6)** along the slot. (Repeat 1 times.)



STEP 2

- Insert hardware **A2** onto panel **(1)**. (Repeat 4 times.)
- Insert hardware **A1** onto panel **(5)**. (Repeat 4 times.)



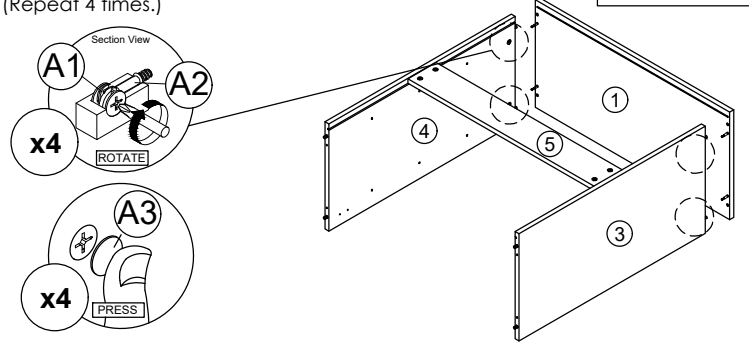
* Ensure the arrows on hardware **A1** point towards mounting positions.

STEP 4

- Attach panel **(1)** to panel **(3)** and **(4)**.
- Insert all hardware **A2** into **A1**.
- Rotate all **A1** until tight.
- Apply **A3** onto all **A1**. (Repeat 4 times.)



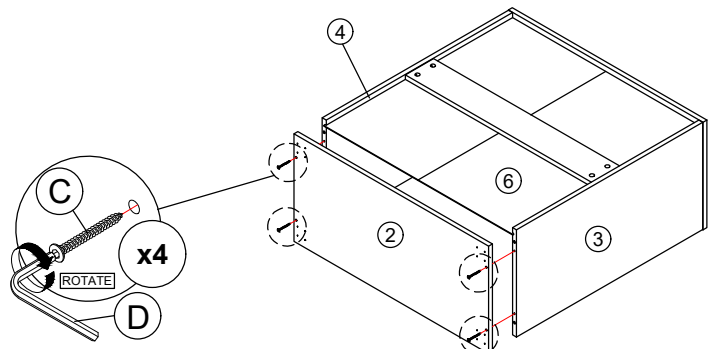
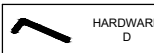
OR



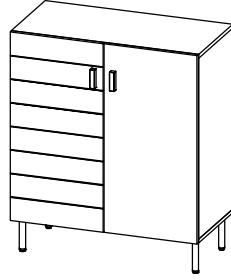
* In this step hardware **A1**, **A2** and **B** are pre-inserted.

STEP 6

- Connect panel **(2)** to panel **(3)** and **(4)** by using hardware **C** and **D**. (Repeat 4 times.)



CODING
- 372051

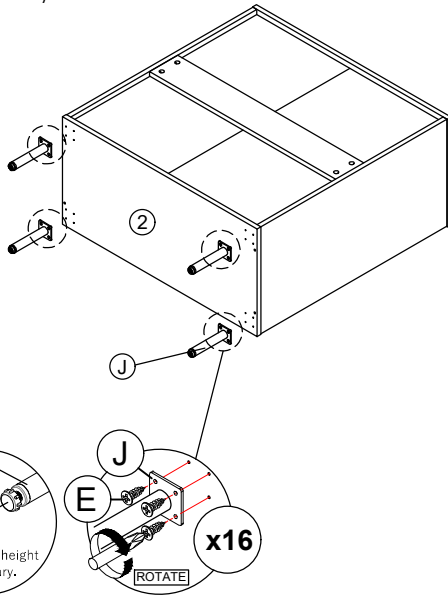


ISO 9001:2015
Reg. No. 000435-1-2017-1-0265

nuhoom.com

STEP 7

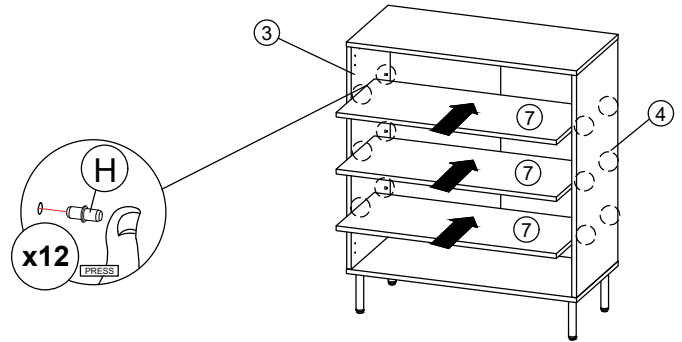
Assemble hardware **J** onto panel **(2)** by using hardware **E**.
(Repeat 4 times for each hardware.)



Please note that the hardware **J** has a **Plastic adjuster** at the bottom to unscrew and adjust the height of hardware **J** if necessary.

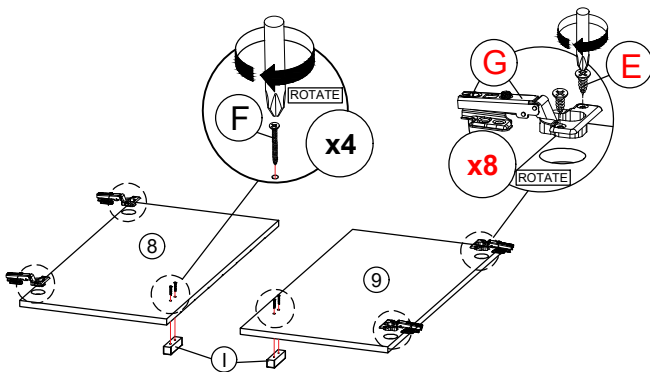
STEP 8

- Insert hardware **H** into mounting positions on panel **(3)**, and **(4)** by hand.
(Repeat 12 times.)
- Assemble the panel **(7)** into between panel **(3)** and **(4)**.
(Repeat 3 times.)



STEP 9

- Fix hardware **I** onto panel **(8)** and **(9)** by using hardware **F**.
(Repeat 2 times for each hardware.)
- Fix hardware **G** onto panel **(8)** and **(9)** by using hardware **E**.
(Repeat 2 times for each hardware.)



* In this step hardware **H** are pre-inserted.

STEP 10

- Fix hardware **G** into panel **(3)** and **(4)** by using hardware **E**.
(Repeat 4 times for each hardware.)
- Tighten or loosen the screw to adjust position of panel **(8)** and **(9)**.
(Do only when needed.)

