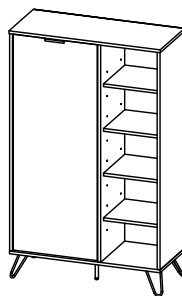


CODING

- 372049

ISO 9001:2015
Reg. No. 00705-1-007-1-QMS

nuhoom.com

Read the instructions carefully. Remove all the wrappings , staples and straps from the carton. Refer to the hardware and furniture part list for guidance. Make sure that you have all the parts before you start assembling. Place all the wooden furniture parts on a clean, flat and soft surface, such as a carpet or rubbermat to prevent scratches.

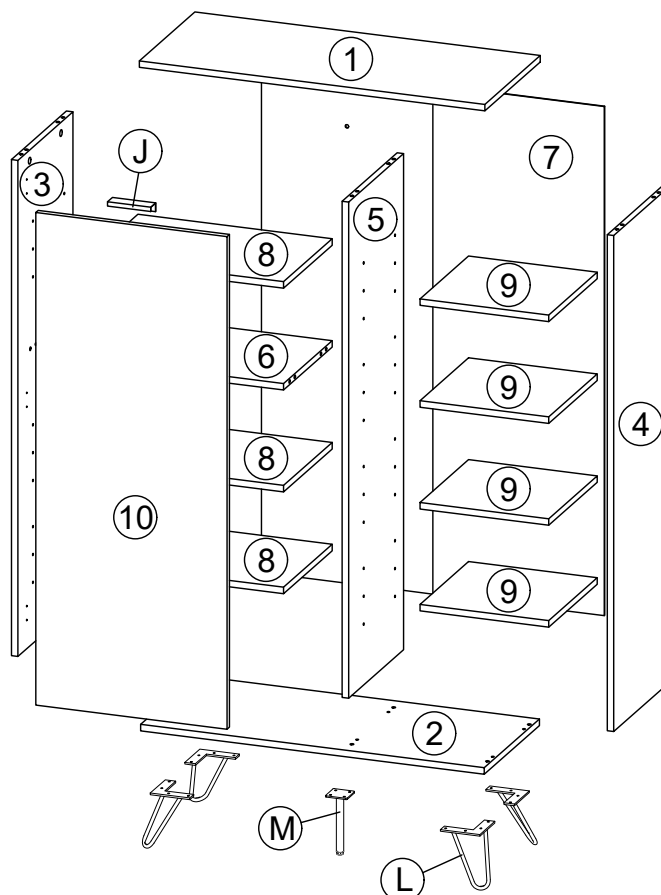
CAUTION

HARDWARE			
A	MINI FIX	A1 A2 A3	10 PCS
B	M8 X 30MM WOOD DOWEL		16 PCS
C	M6 X 50MM CSK CAP WOOD SCREW		6 PCS
D	M3 X 12MM C.B SCREW		2 PCS
E	M3.5 X 16MM C.B SCREW		38 PCS
F	ALLEN KEY M4		1 PC
G	5/8 NAIL		31 PCS
H	SOFT CLOSING 7/8 HINGES		3 SETS
I	METAL SHELF SUPPORT		28 PCS
J	HANDLE EM 0071		1 PC
K	STOPPER(2 PIN)		1 PC
L	METAL LEG 90 x 90 x 10 x H145MM		4 PCS
M	METAL LEG 50 x 50 x H140MM (CENTER)		1 PC

SELF-PREPARED TOOLS: Tools below are NOT included in package.

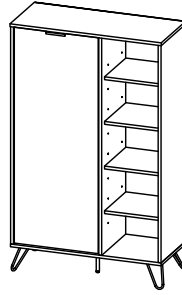
	SCREWDRIVER		HAMMER
--	-------------	--	--------

PART LIST		QTY
1	TOP PANEL	1 PC
2	BOTTOM PANEL	1 PC
3	SIDE PANEL (L)	1 PC
4	SIDE PANEL (R)	1 PC
5	CENTER PANEL	1 PC
6	MIDDLE PANEL	1 PC
7	BACK PANEL	1 PC
8	SHELF PANEL (L)	3 PCS
9	SHELF PANEL (R)	4 PCS
10	DOOR PANEL	1 PC



CODING

- 372049

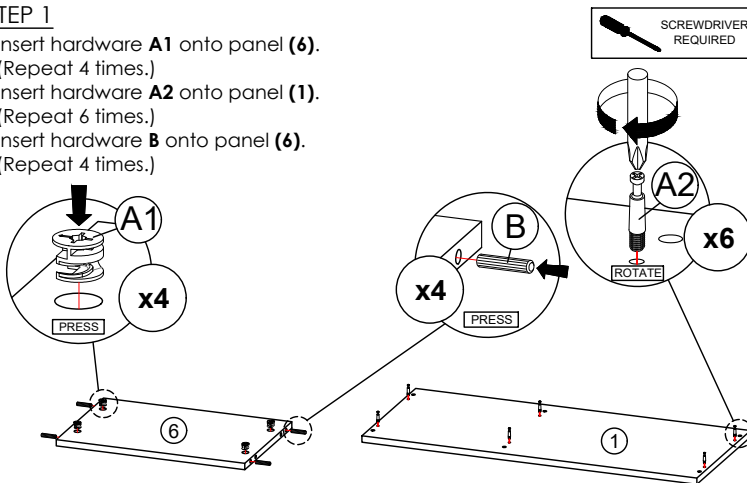


ISO 9001:2015
Reg. No. 00705-1-007-1-Q005

nuhoom.com

STEP 1

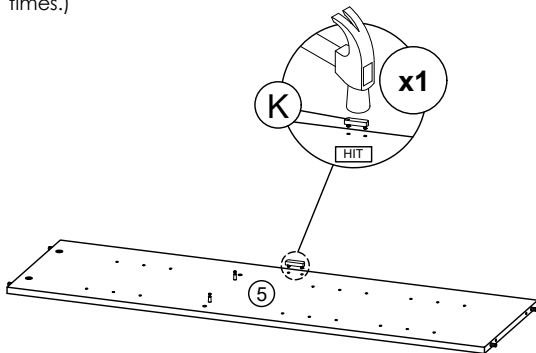
- Insert hardware **A1** onto panel (6).
(Repeat 4 times.)
- Insert hardware **A2** onto panel (1).
(Repeat 6 times.)
- Insert hardware **B** onto panel (6).
(Repeat 4 times.)



* Ensure the arrows on hardware **A1** point towards mounting positions.

STEP 2

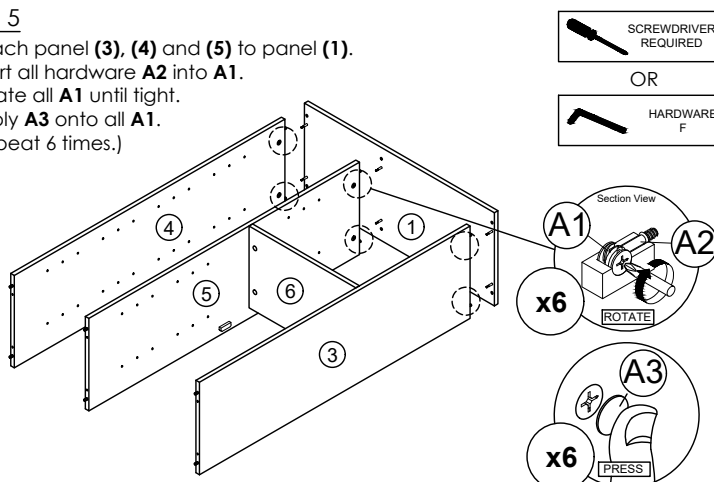
- Hit hardware **K** onto panel (5).
(Repeat 1 times.)



* In this step hardware **A1**, **A2** and **B** are pre-inserted.

STEP 3

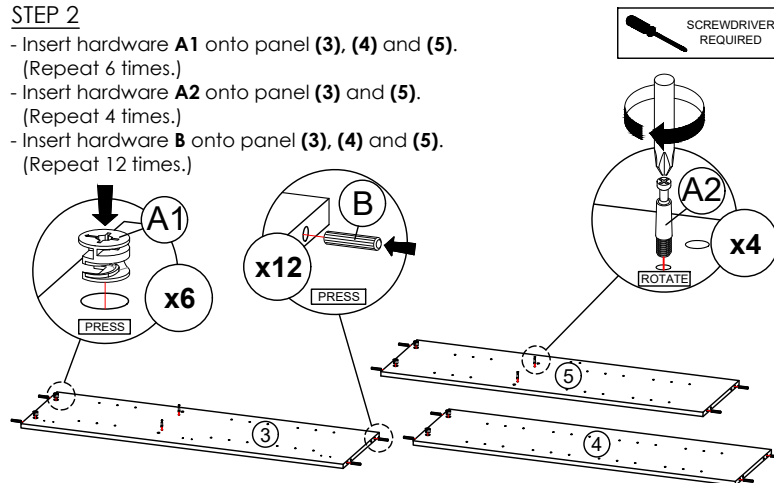
- Attach panel (3), (4) and (5) to panel (1).
- Insert all hardware **A2** into **A1**.
- Rotate all **A1** until tight.
- Apply **A3** onto all **A1**.
(Repeat 6 times.)



* In this step hardware **A1**, **A2** and **B** are pre-inserted.

STEP 4

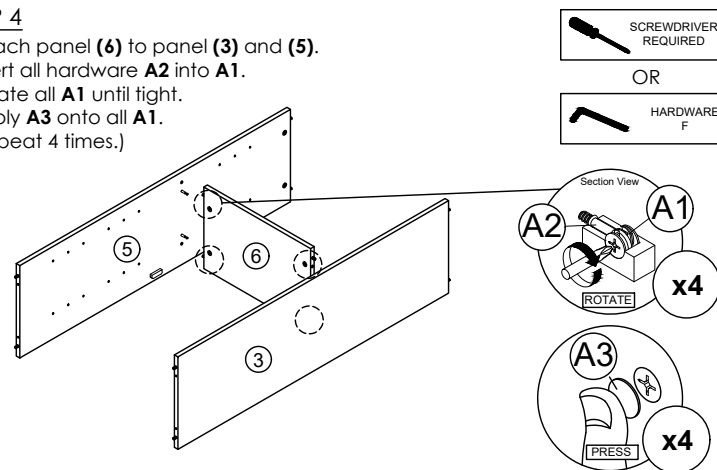
- Insert hardware **A1** onto panel (3), (4) and (5).
(Repeat 6 times.)
- Insert hardware **A2** onto panel (3) and (5).
(Repeat 4 times.)
- Insert hardware **B** onto panel (3), (4) and (5).
(Repeat 12 times.)



* Ensure the arrows on hardware **A1** point towards mounting positions.

STEP 5

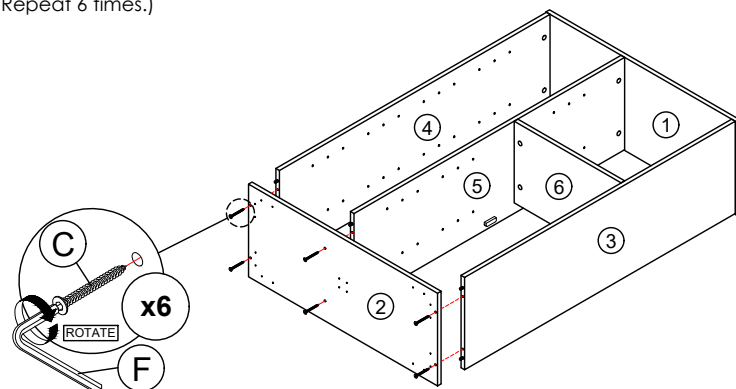
- Attach panel (6) to panel (3) and (5).
- Insert all hardware **A2** into **A1**.
- Rotate all **A1** until tight.
- Apply **A3** onto all **A1**.
(Repeat 4 times.)



* In this step hardware **A1**, **A2** and **B** are pre-inserted.

STEP 6

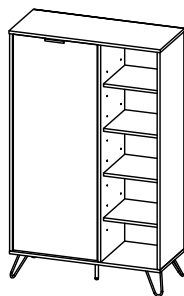
- Connect panel (2) to panel (3), (4) and (5) by using hardware **C** and **F**.
(Repeat 6 times.)



* In this step hardware **B** are pre-inserted.

CODING

- 372049

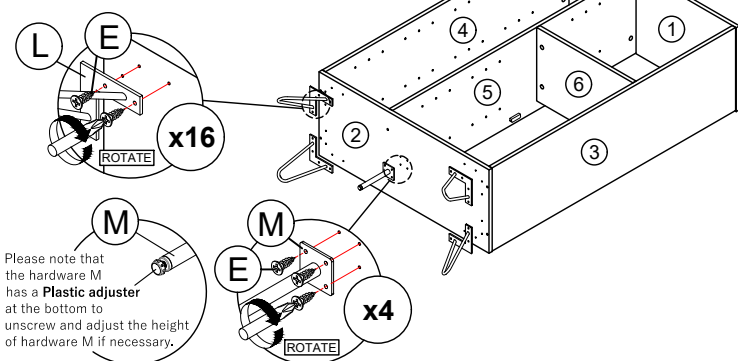


ISO 9001:2015
Reg. No. 00705-1-007-1-QMS

nuhoom.com

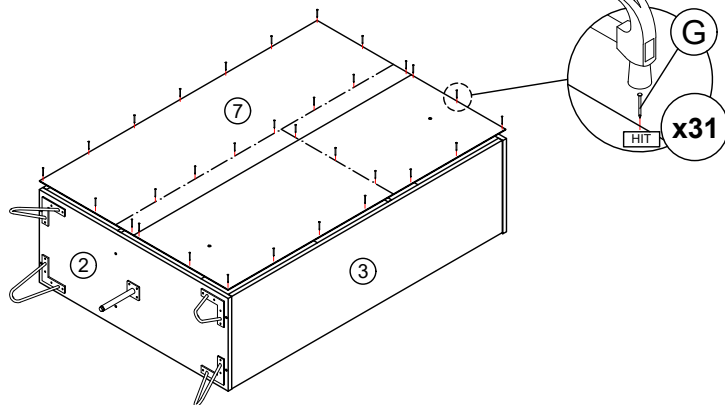
STEP 7

- Assemble hardware **L** and **M** onto panel **(2)** by using hardware **E**.
(Repeat 4 times for each hardware.)



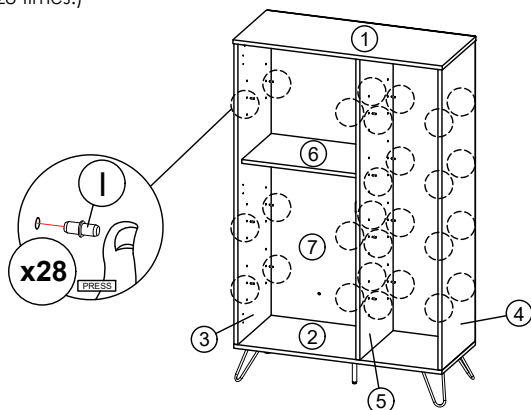
STEP 8

- Assemble panel **(7)** to entire body with hardware **G**.
(Repeat 31 times.)



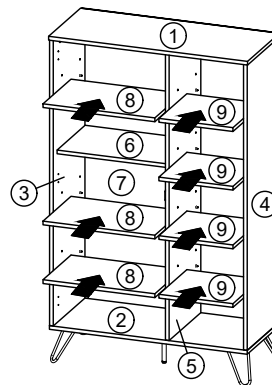
STEP 9

- Insert hardware **I** into mounting positions on panel **(3)**, **(4)** and **(5)** by hand.
(Repeat 28 times.)



STEP 10

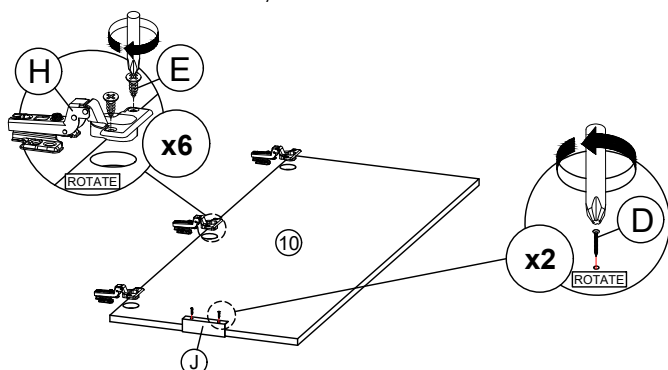
- Assemble panel **(8)** into between panel **(3)** and **(5)**.
(Repeat 3 times.)
- Assemble panel **(9)** into between panel **(4)** and **(5)**.
(Repeat 4 times.)



* In this step hardware **I** are pre-inserted.

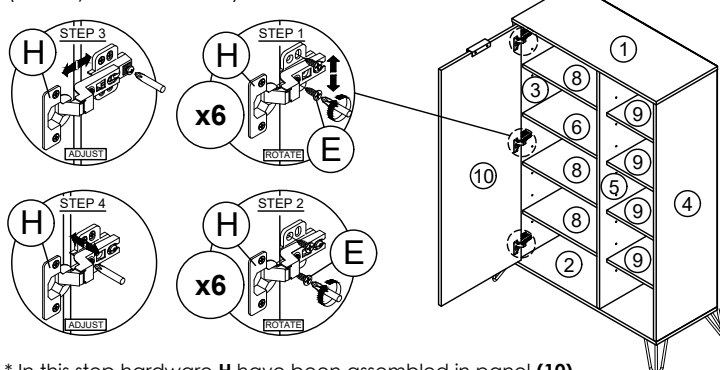
STEP 11

- Fix hardware **H** onto panel **(10)** by using hardware **E**.
(Repeat 2 times for each hardware.)
- Fix hardware **J** onto panel **(10)** by using hardware **D**.
(Repeat 2 times for each hardware.)



STEP 12

- Fix hardware **H** into panel **(3)** by using hardware **E**.
(Repeat 4 times for each hardware.)
- Tighten or loosen the screw to adjust position of panel **(10)**.
(Do only when needed.)



* In this step hardware **H** have been assembled in panel **(10)**.