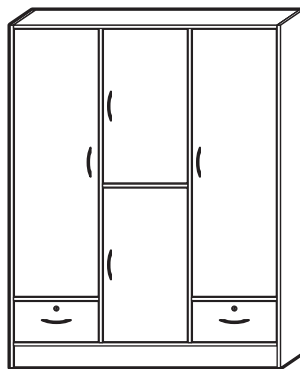


## CODING

-354017

-354018



ISO 9001:2015  
Reg. No. 000435-1-MY-1-QMS

nuhoom.com

Read the instructions carefully. Remove all the wrappings, staples and straps from the carton. Refer to the hardware and furniture part list for guidance. Make sure that you have all the parts before you start assembling. Place all the wooden furniture parts on a clean, flat and soft surface, such as a carpet or rubbermat to prevent scratches.

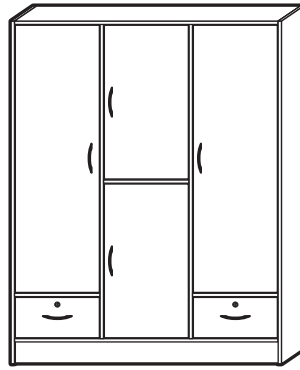
## CAUTION

KEEP ALL THE PARTS OUT OF REACH OF CHILDREN.

ITEM	HARDWARE LIST		QTY
①		M5 x 40mm JCBCW Screw	28
②		M4 x 38mm Chipboard Screw	4
③		M4 x 32mm Chipboard Screw	16
④		M4 x 25mm Chipboard Screw	8
⑤		M3.5 x 16mm Chipboard Screw	36
⑥		M3 x 12mm Chipboard Screw	12
⑦		Nail	80
⑧		Wood Dowel 6 x 25mm	36
⑨		Magnet	4
⑩		Magnet Plate	4
⑪		Door Spring	8
⑫		Leg Nail	6
⑬		L Bracket	2
⑭		Handle (1009)	6
⑮		Shelf Holder	8
⑯		Aluminium Pipe	2
⑰		Drawer Slide	4
⑱		Drawer Slide	4
⑲		Square Leg (End)	4
⑳		Cam Lock 30mm	2
㉑		Allen Key	1

ITEM	PART LIST		QTY
Ⓐ	Left & Right Side Panel		2
Ⓑ	Center Panel		2
Ⓒ	Shelf Panel		3
Ⓓ	Top & Bottom Panel		2
Ⓔ	Brace Panel		2
Ⓕ	Back Panel (MDF)		1
Ⓖ	Door Panel		2
Ⓗ	Small Door Panel		2
Ⓘ	Drawer Panel		2
Ⓙ	Drawer Side Panel		4
Ⓚ	Drawer Back Panel		2
Ⓛ	Drawer Bottom Panel		2
Ⓜ	Shelf Panel		2

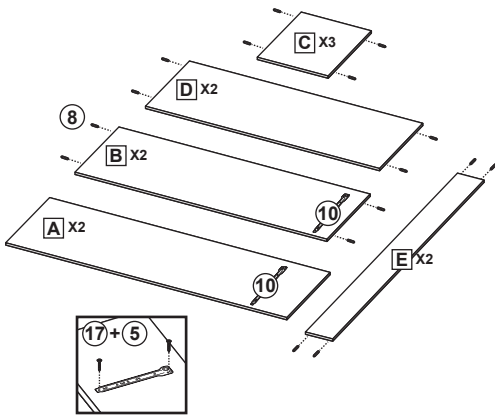
**CODING**  
-354017  
-354018



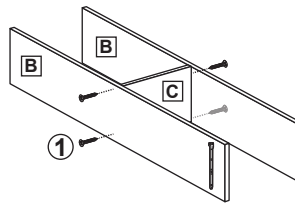
ISO 9001:2015  
Reg. No. 000435-1-MY-1-QMS

nuhoom.com

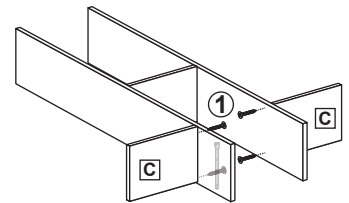
## Step 1



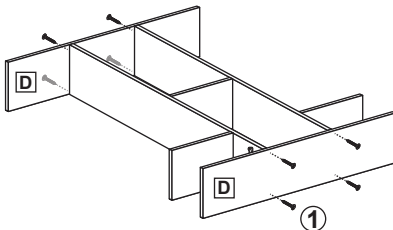
## Step 2



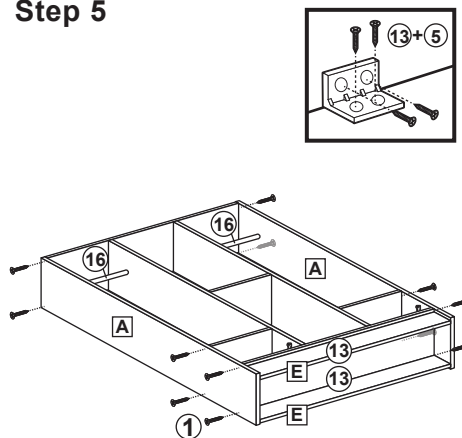
## Step 3



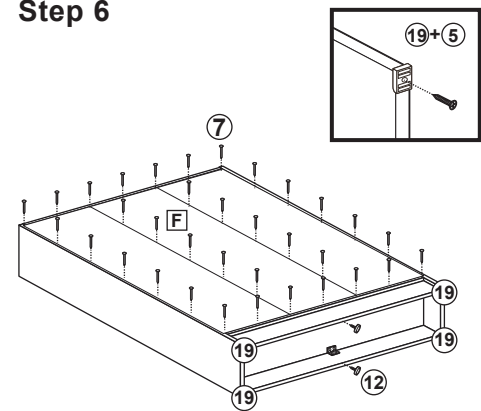
## Step 4



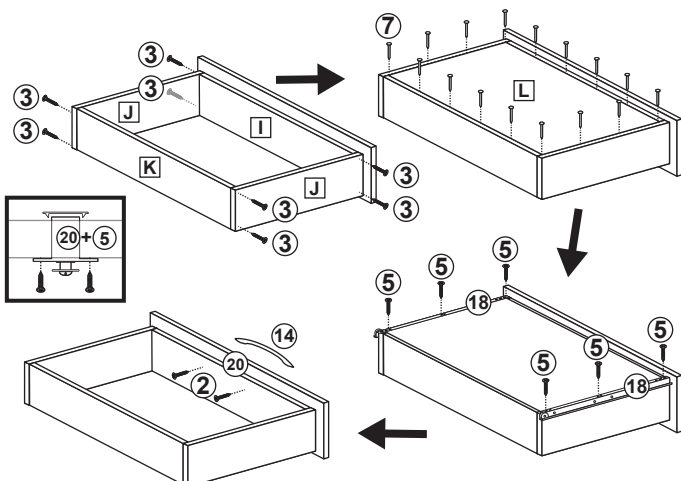
## Step 5



## Step 6



## Step 7



## Step 8

