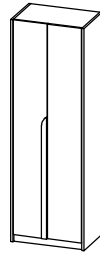


## CODING

-352023

-352021

-352027



ISO 9001:2015  
Reg. No. 09045-1-MY-1-QMS

nuhoom.com

Read the instructions carefully. Remove all the wrappings, staples and straps from the carton. Refer to the hardware and furniture part list for guidance. Make sure that you have all the parts before you start assembling. Place all the wooden furniture parts on a clean, flat and soft surface, such as a carpet or rubbermat to prevent scratches.

**CAUTION**  
KEEP ALL THE PARTS OUT OF CHILDREN'S REACH.

| HARDWARE |                         |            |         |
|----------|-------------------------|------------|---------|
| A        | MINI FIX                | A1  A2  A3 | 16 SETS |
| B        | M8 X 30MM WOOD DOWEL    |            | 16 PCS  |
| C        | ALLEN KEY M4            |            | 1 PC    |
| D        | M3.5 X 16MM C.B SCREW   |            | 40 PCS  |
| E        | M4 X 25MM C.B SCREW     |            | 4 PCS   |
| F        | 5/8 NAIL                |            | 26 PCS  |
| G        | 5/8 PVC NAIL LEG        |            | 8 PCS   |
| H        | SOFT CLOSING 7/8 HINGES |            | 6 PCS   |
| I        | 433 OVAL TUBE BRACKET   |            | 2 PCS   |
| J        | 433 OVAL PAIP           |            | 1 PC    |

**SELF-PREPARED TOOLS:** Tools below are NOT included in package.

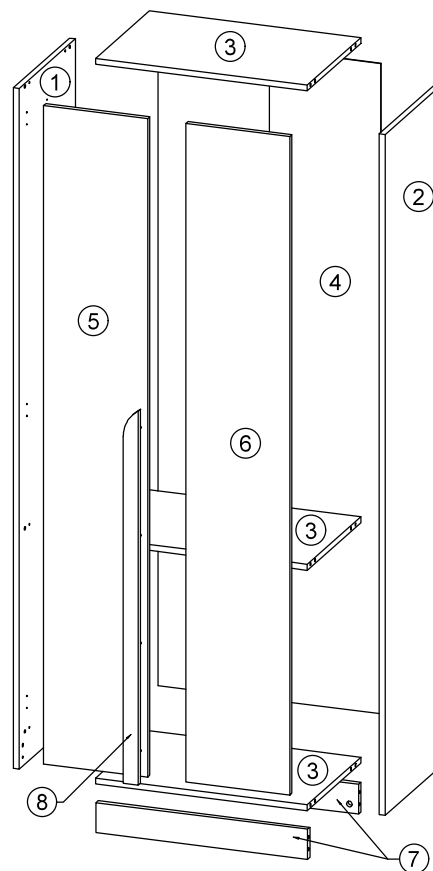


SCREWDRIVER

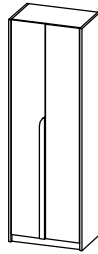


HAMMER

| PART LIST |                | QTY   |
|-----------|----------------|-------|
| 1         | SIDE PANEL (L) | 1 PC  |
| 2         | SIDE PANEL (R) | 1 PC  |
| 3         | MIDDLE PANEL   | 3 PCS |
| 4         | BACK PANEL     | 1 PC  |
| 5         | DOOR PANEL (L) | 1 PC  |
| 6         | DOOR PANEL (R) | 1 PC  |
| 7         | LEG PANEL      | 2 PCS |
| 8         | HANDLE         | 1 PC  |



**CODING**  
- 352021

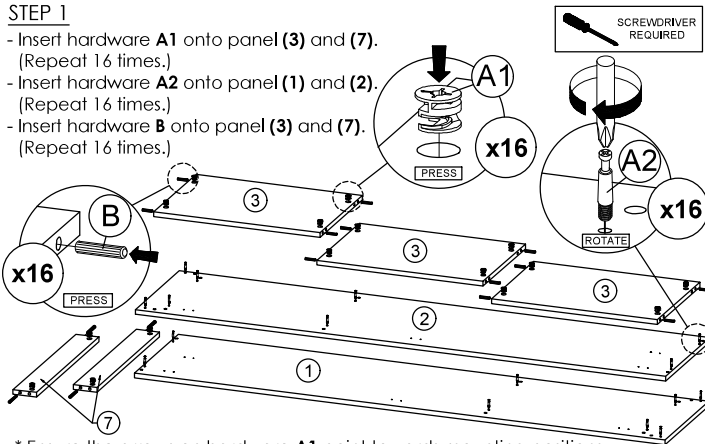


ISO 9001:2015  
Reg. No. M9455-1-MY-1-QMS

nuhoom.com

**STEP 1**

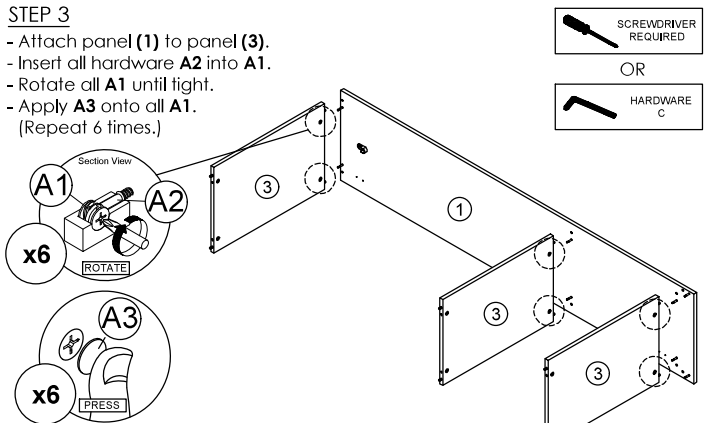
- Insert hardware **A1** onto panel **(3)** and **(7)**.  
(Repeat 16 times.)
- Insert hardware **A2** onto panel **(1)** and **(2)**.  
(Repeat 16 times.)
- Insert hardware **B** onto panel **(3)** and **(7)**.  
(Repeat 16 times.)



\* Ensure the arrows on hardware **A1** point towards mounting positions.

**STEP 3**

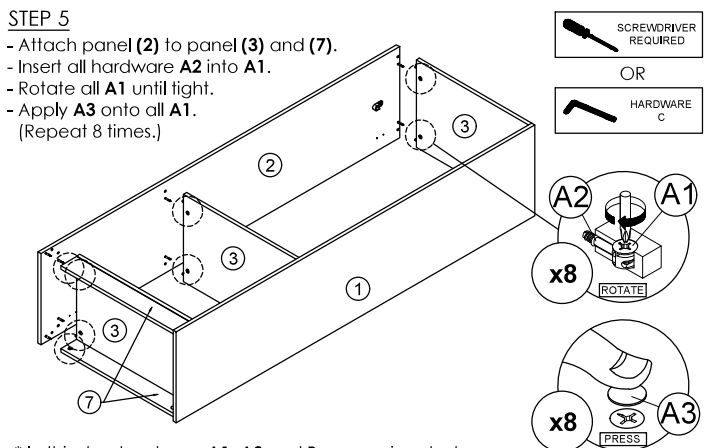
- Attach panel **(1)** to panel **(3)**.
- Insert all hardware **A2** into **A1**.
- Rotate all **A1** until tight.
- Apply **A3** onto all **A1**.  
(Repeat 6 times.)



\* In this step hardware **A1**, **A2** and **B** are pre-inserted.

**STEP 5**

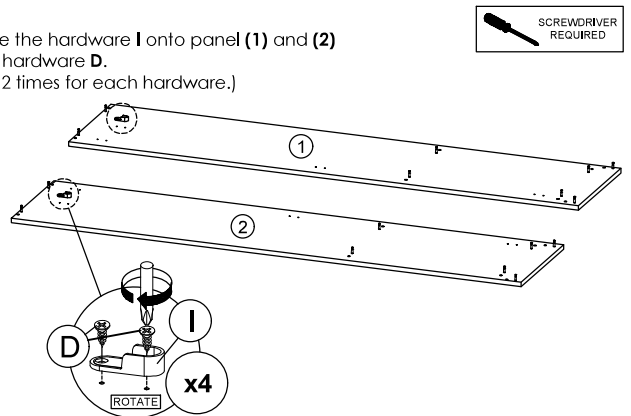
- Attach panel **(2)** to panel **(3)** and **(7)**.
- Insert all hardware **A2** into **A1**.
- Rotate all **A1** until tight.
- Apply **A3** onto all **A1**.  
(Repeat 8 times.)



\* In this step hardware **A1**, **A2** and **B** are pre-inserted.

**STEP 2**

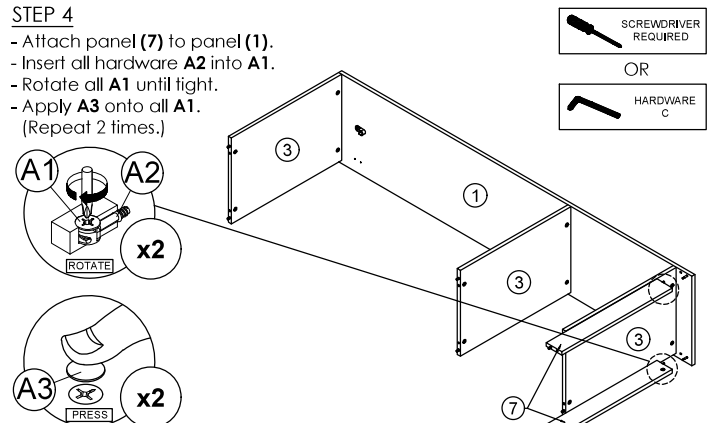
- Assemble the hardware **I** onto panel **(1)** and **(2)** by using hardware **D**.  
(Repeat 2 times for each hardware.)



\* In this step hardware **A2** are pre-inserted.

**STEP 4**

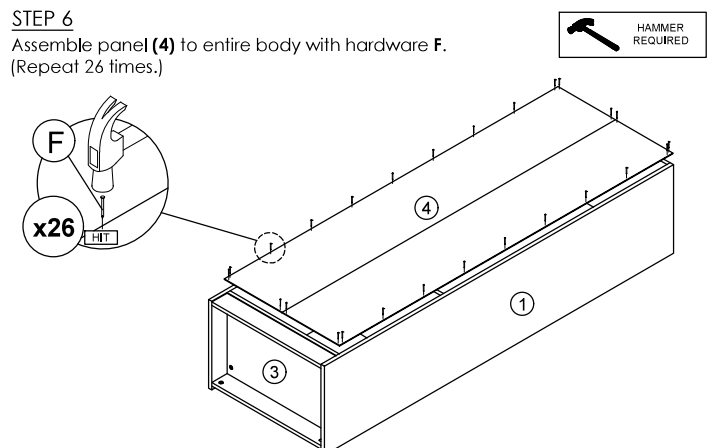
- Attach panel **(7)** to panel **(1)**.
- Insert all hardware **A2** into **A1**.
- Rotate all **A1** until tight.
- Apply **A3** onto all **A1**.  
(Repeat 2 times.)



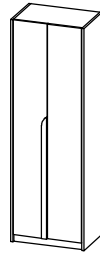
\* In this step hardware **A1**, **A2** and **B** are pre-inserted.

**STEP 6**

- Assemble panel **(4)** to entire body with hardware **F**.  
(Repeat 26 times.)



CODING  
- 352021

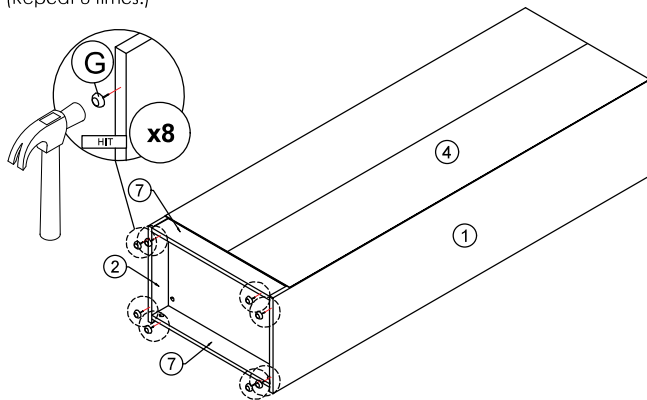


ISO 9001:2015  
Reg. No. M9455-1-MY-1-QMS

nuhoom.com

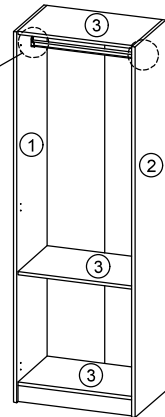
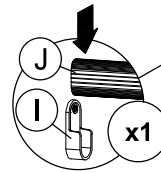
**STEP 7**

Hit hardware **G** into bottom of panel **(1)**, **(2)** and **(7)**.  
(Repeat 8 times.)



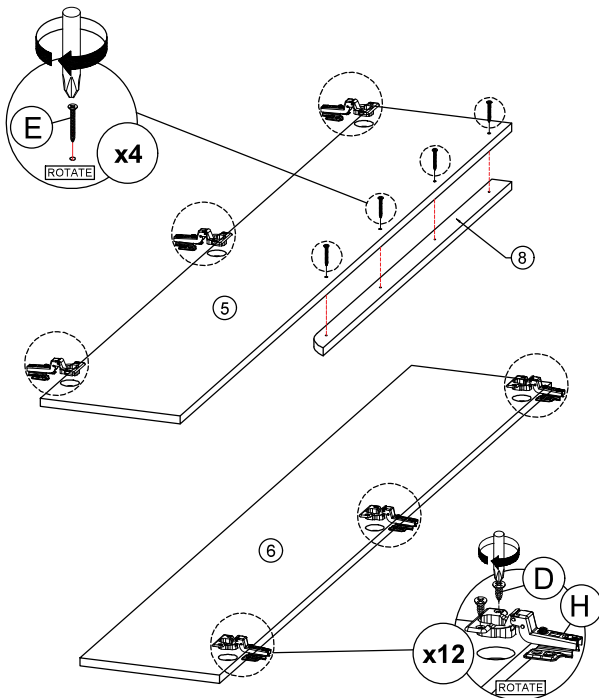
**STEP 8**

Attach hardware **J** to hardware **I**.  
(Repeat 1 times.)



**STEP 9**

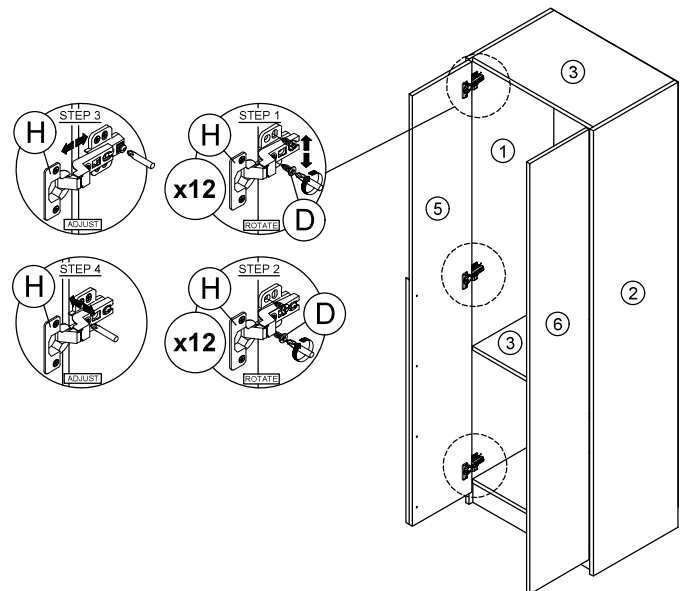
- Fix hardware **H** onto panel **(5)** and **(6)** by using hardware **D**.  
(Repeat 2 times for each hardware.)
- Assemble panel **(8)** to panel **(5)** with hardware **E**.  
(Repeat 4 times.)



\* In this step hardware **I** have been assembled.

**STEP 10**

- Fix hardware **H** into panel **(1)** and **(2)** by using hardware **D**.  
(Repeat 4 times for each hardware.)
- Tighten or loosen the screw to adjust position of panel **(5)** and **(6)**.  
(Do only when needed.)



\* In this step hardware **H** have been assembled in panel **(5)** and **(6)**.