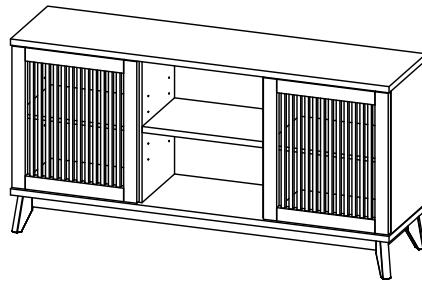


**CODING**  
- 345081



ISO 9001:2015  
Reg. No. 00003-L-ART-1-QM8

**nuhoom.com**

Read the instructions carefully. Remove all the wrappings, staples and straps from the carton. Refer to the hardware and furniture part list for guidance. Make sure that you have all the parts before you start assembling. Place all the wooden furniture parts on a clean, flat and soft surface, such as a carpet or rubbermat to prevent scratches.

**CAUTION**  
KEEP ALL THE PARTS OUT OF CHILDREN'S REACH.

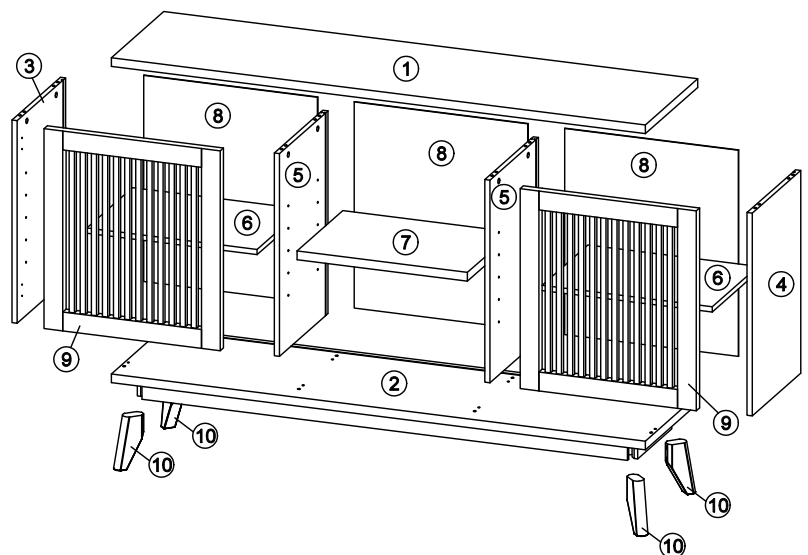
PART LIST		QTY
1	TOP PANEL	1 PC
2	BOTTOM PANEL	1 PC
3	SIDE PANEL (L)	1 PC
4	SIDE PANEL (R)	1 PC
5	CENTER PANEL	2 PCS
6	SHELF PANEL (L/R)	2 PCS
7	SHELF PANEL (CTR)	1 PC
8	BACK PANEL	3 PCS
9	DOOR PANEL	2 PCS
10	CABINET LEG	4 PCS

HARDWARE			
A	MINI FIX	A1  A2  A3	8 SETS
B	M8 X 30MM WOOD DOWEL		16 PCS
C	M6 X 60MM CSK CAP WOOD SCREW		8 PCS
D	ALLEN KEY M4		1 PC
E	M3.5 X 16MM C.B SCREW		24 PCS
F	JCBC SCREW M6 X 70MM		8 PCS
G	SPRING WASHER M6		8 PCS
H	FLAT WASHER M6		8 PCS
I	METAL SHELF SUPPORT		12 PCS
J	STUB 192 WITH SCREW	J1  J2	10 PCS
K	SOFT CLOSING 5/8 HINGES		4 PCS

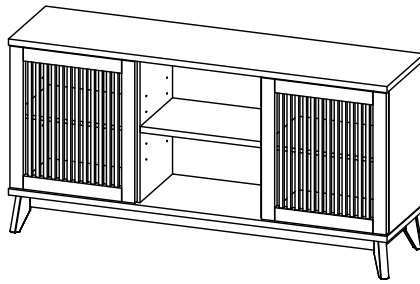
TIPPING PACK WITH AI		2 SETS
----------------------	--	--------

**SELF-PREPARED TOOLS:** Tools below are NOT included in package.

	SCREWDRIVER		HAMMER
--	-------------	--	--------



**CODING**  
- 345081

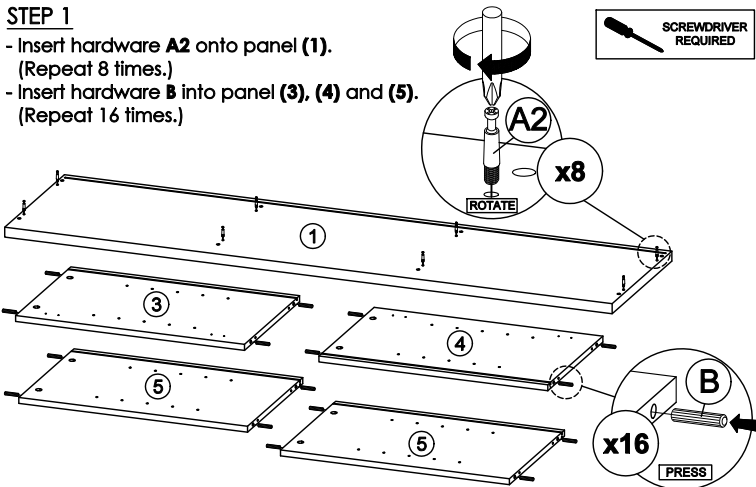


ISO 9001:2015  
Reg. No. 00035-L-INT-1-QM8

**nuhoom.com**

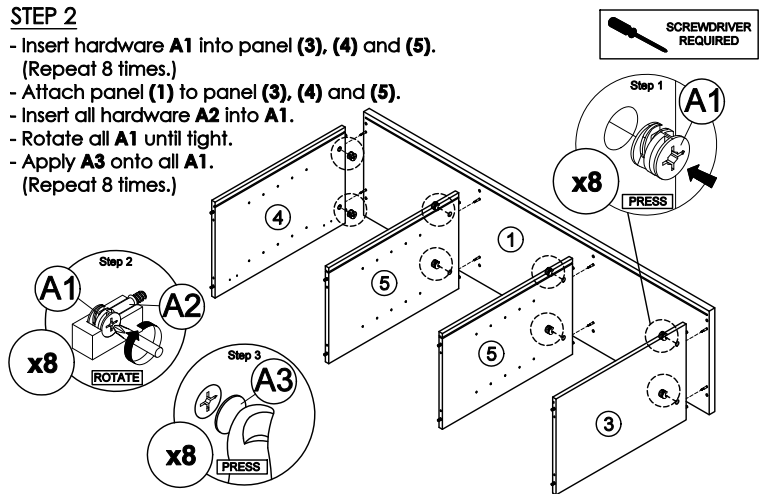
**STEP 1**

- Insert hardware **A2** onto panel **(1)**.  
(Repeat 8 times.)
- Insert hardware **B** into panel **(3)**, **(4)** and **(5)**.  
(Repeat 16 times.)



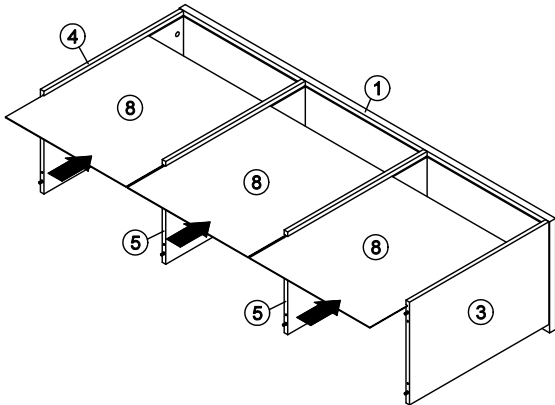
**STEP 2**

- Insert hardware **A1** into panel **(3)**, **(4)** and **(5)**.  
(Repeat 8 times.)
- Attach panel **(1)** to panel **(3)**, **(4)** and **(5)**.
- Insert all hardware **A2** into **A1**.
- Rotate all **A1** until tight.
- Apply **A3** onto all **A1**.  
(Repeat 8 times.)



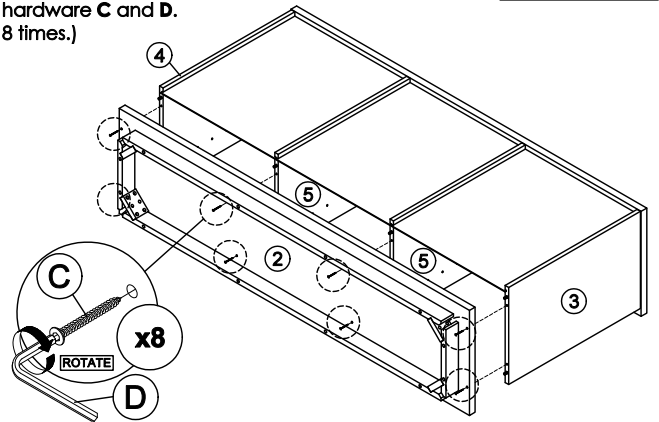
**STEP 3**

- Insert the panel **(8)** along the slot.  
(Repeat 3 times.)



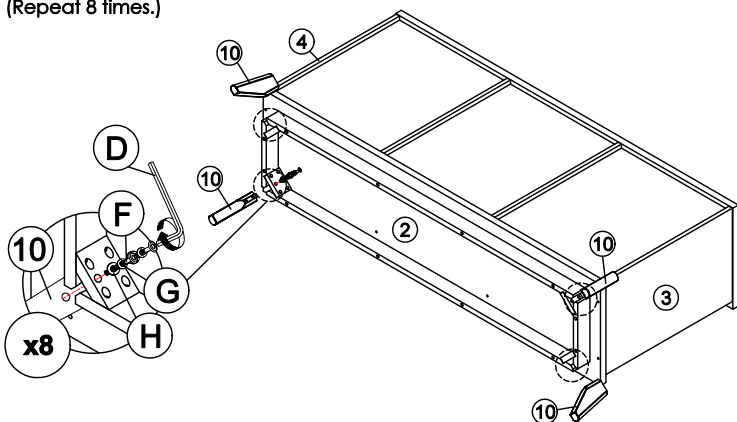
**STEP 4**

- Connect panel **(2)** to panel **(3)**, **(4)** and **(5)** by using hardware **C** and **D**.  
(Repeat 8 times.)



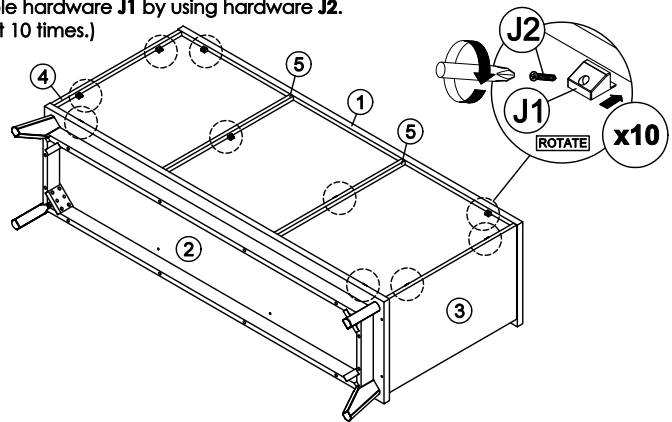
**STEP 5**

- Fix legs **(10)** to panel **(2)** by using hardware **D**, **F**, **G** and **H**.  
(Repeat 8 times.)

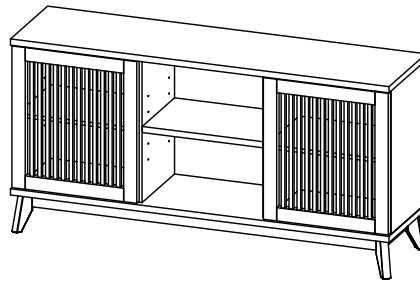


**STEP 6**

- Insert hardware **J1** into slot at panel **(1)**, **(2)**, **(3)**, **(4)** and **(5)**.
- Assemble hardware **J1** by using hardware **J2**.  
(Repeat 10 times.)



**CODING**  
- 345081

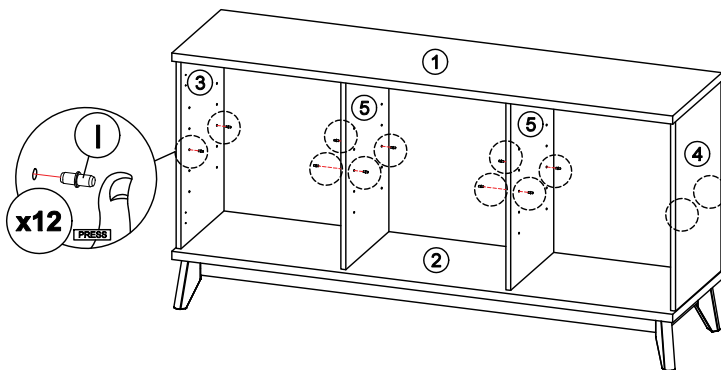


ISO 9001:2015  
Reg. No. 00003-L-INT-1-Q08

**nuhoom.com**

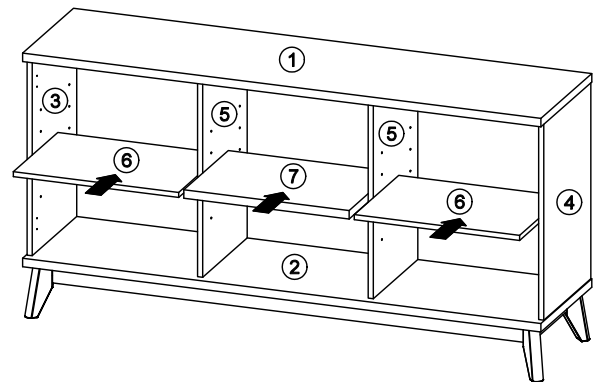
**STEP 7**

- Insert hardware **I** into mounting positions on panel **(3)**, **(4)** and **(5)** by hand.  
(Repeat 12 times.)



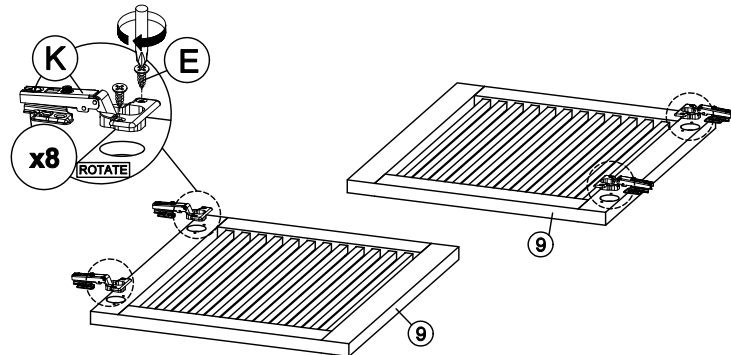
**STEP 8**

- Assemble the panel **(6)** into between panel **(3)** and **(5)**.
- Assemble the panel **(6)** into between panel **(4)** and **(5)**.
- Assemble the panel **(7)** into between panel **(5)**.



**STEP 9**

- Fix hardware **K** onto panel **(9)** by using hardware **E**.  
(Repeat 2 times for each hardware.)



**STEP 10**

- Fix hardware **K** into panel **(3)** and **(4)** by using hardware **E**.  
(Repeat 4 times for each hardware.)
- Tighten or loosen the screw to adjust position of panel **(9)**.  
(Do only when needed.)

