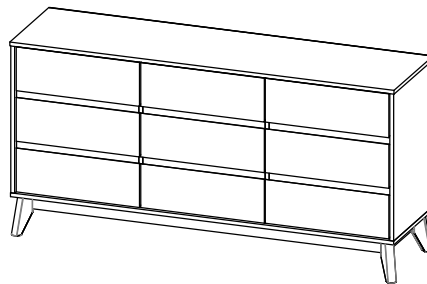


CODING
- 345051



ISO 9001:2015
Reg. No. 000435-1-MY-1-QMS

nuhoom.com

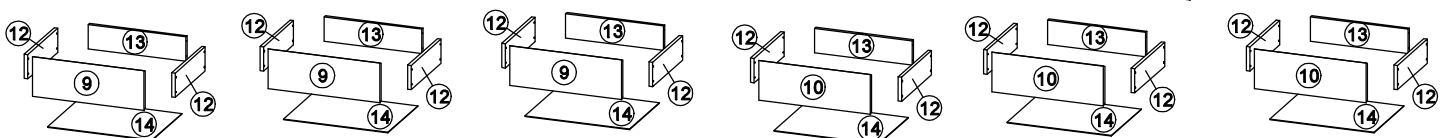
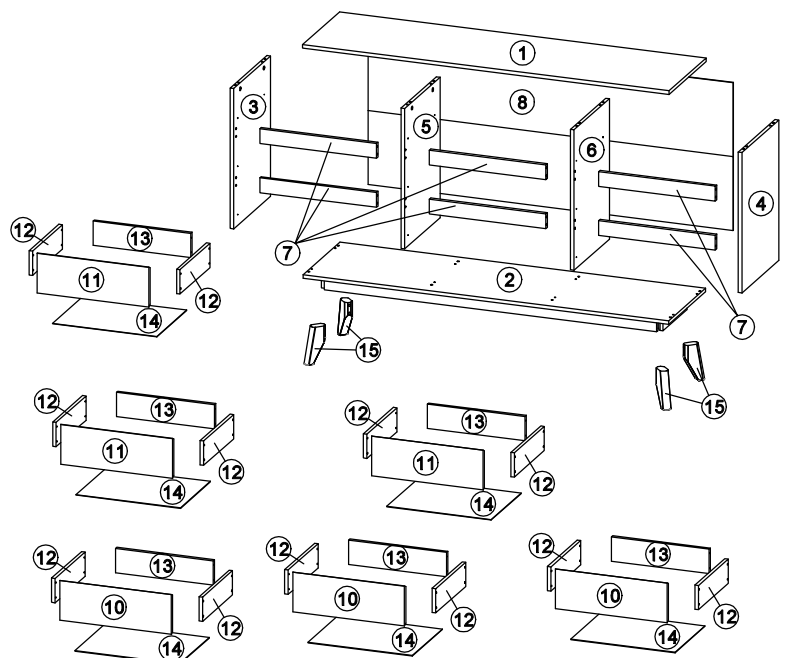
Read the instructions carefully. Remove all the wrappings, staples and straps from the carton. Refer to the hardware and furniture part list for guidance. Make sure that you have all the parts before you start assembling. Place all the wooden furniture parts on a clean, flat and soft surface, such as a carpet or rubbermat to prevent scratches.

CAUTION
KEEP ALL THE PARTS OUT OF CHILDREN'S REACH.

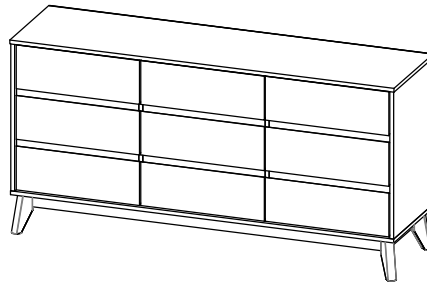
| PART LIST | | QTY |
|-----------|-----------------------|--------|
| 1 | TOP PANEL | 1 PC |
| 2 | BOTTOM PANEL | 1 PC |
| 3 | SIDE PANEL (L) | 1 PC |
| 4 | SIDE PANEL (R) | 1 PC |
| 5 | CENTER PANEL (L) | 1 PC |
| 6 | CENTER PANEL (R) | 1 PC |
| 7 | BONE PANEL | 6 PCS |
| 8 | BACK PANEL | 1 PC |
| 9 | DRAWER FRONT (L) | 3 PCS |
| 10 | DRAWER FRONT (CENTER) | 3 PCS |
| 11 | DRAWER FRONT (R) | 3 PCS |
| 12 | DRAWER SIDE | 18 PCS |
| 13 | DRAWER BACK | 9 PCS |
| 14 | DRAWER BOTTOM | 9 PCS |
| 15 | LEG | 4 PCS |

| HARDWARE | | | |
|----------|------------------------------|----------------------|---------|
| A | MINI FIX | A1 A2 A3 | 8 PCS |
| B | M8 X 30MM WOOD DOWEL | | 40 PCS |
| C | M6 X 50MM CSK CAP WOOD SCREW | | 8 PCS |
| D | 5/8 NAIL | | 98 PCS |
| E | ALLEN KEY M4 | | 1 PC |
| F | ONE HOLE L BRACKET (2MM) | | 12 PCS |
| G | M3.5 X 16MM C.B SCREW | | 132 PCS |
| H | M4 X 38MM C.B SCREW | | 72 PCS |
| I | 14" DRAWER SLIDE | I1 (L/R) I2 (L/R) | 9 SETS |
| J | JCBC Screw M6 x 70 | | 8 PCS |
| K | SPRING WASHER M6 | | 8 PCS |
| L | FLAT WASHER M6 | | 8 PCS |
| M | TIPPING PACK | M1 M2 M3 M4 M5 | 2 SETS |

| SELF-PREPARED TOOLS: Tools below are NOT included in package. | |
|---|--------|
| SCREWDRIVER | HAMMER |



CODING
- 345051

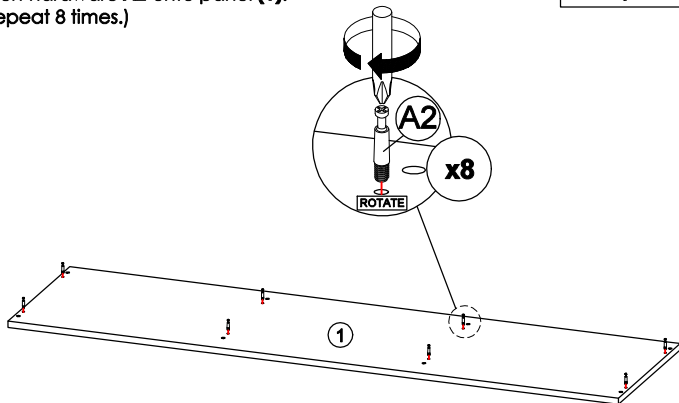


ISO 9001:2015
Reg. No. 000435-1-MY-1-QMS

nuhoom.com

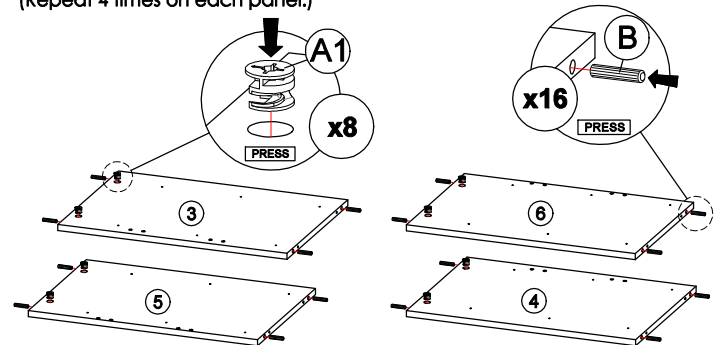
STEP 1

Insert hardware **A2** onto panel **(1)**.
(Repeat 8 times.)



STEP 2

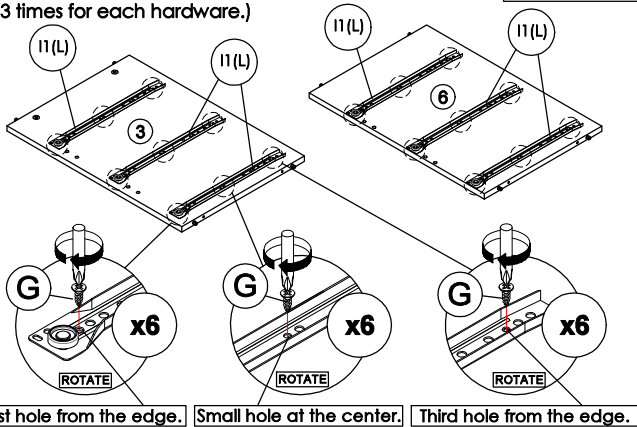
- Insert hardware **A1** onto panel **(3), (4), (5)** and **(6)**.
(Repeat 2 times on each panel.)
- Insert hardware **B** onto panel **(3), (4), (5)** and **(6)**.
(Repeat 4 times on each panel.)



* Ensure the arrows on hardware **A1** point towards mounting positions.

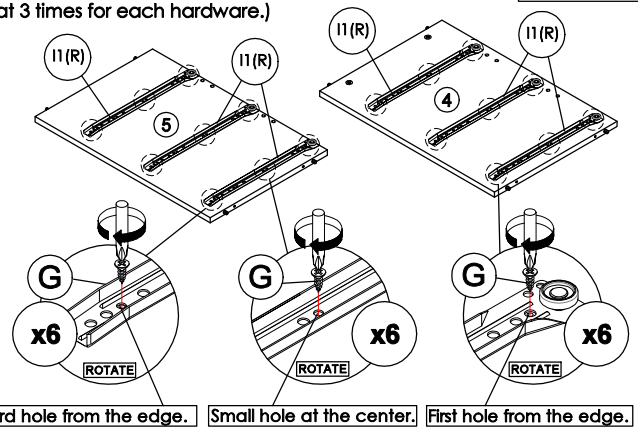
STEP 3

Fix hardware **I1 (L)** into panel **(3)** and **(6)** with hardware **G**.
(Repeat 3 times for each hardware.)



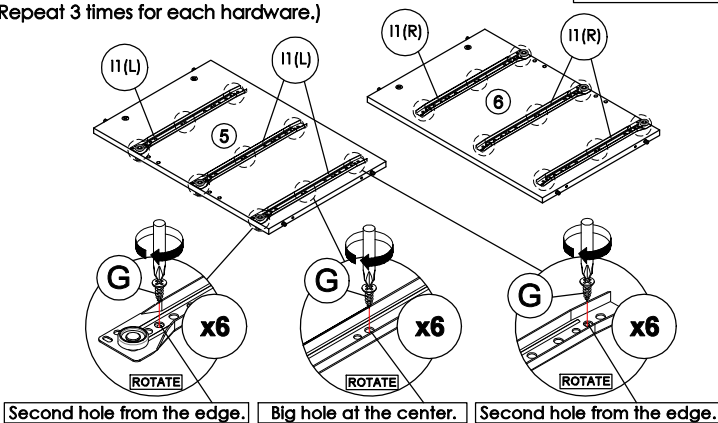
STEP 4

Fix hardware **I1 (R)** into panel **(4)** and **(5)** with hardware **G**.
(Repeat 3 times for each hardware.)



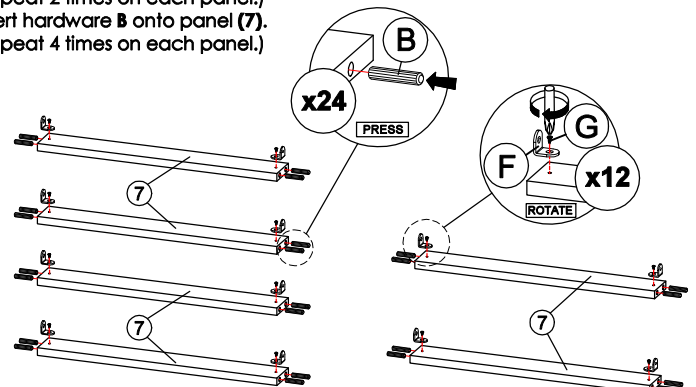
STEP 5

Fix hardware **I1 (L/R)** into panel **(5)** and **(6)** with hardware **G**.
(Repeat 3 times for each hardware.)

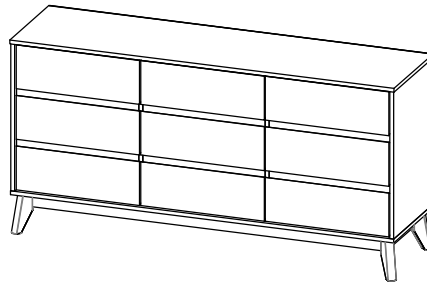


STEP 6

- Assemble hardware **F** to panel **(7)** with hardware **G**.
(Repeat 2 times on each panel.)
- Insert hardware **B** onto panel **(7)**.
(Repeat 4 times on each panel.)



CODING
- 345051

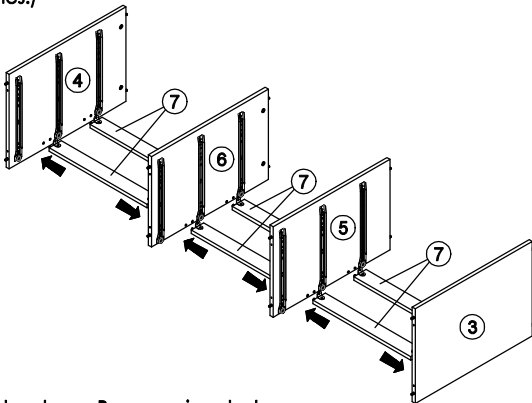


ISO 9001:2015
Reg. No. 000436-1-MY-1-Q005

nuhoom.com

STEP 7

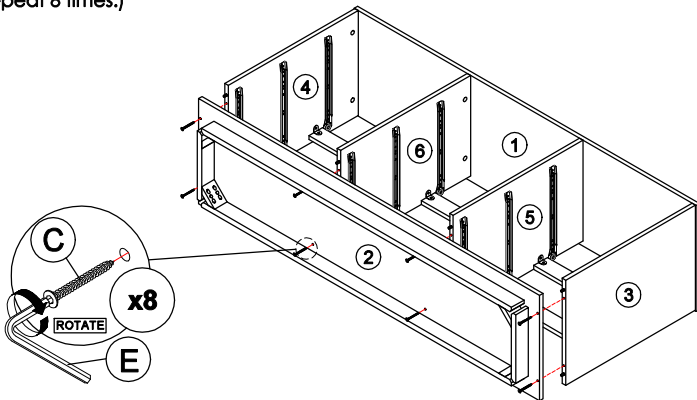
Attach panel (7) to panel (3), (4), (5) and (6).
(Repeat 6 times.)



* In this step hardware B are pre-inserted.

STEP 9

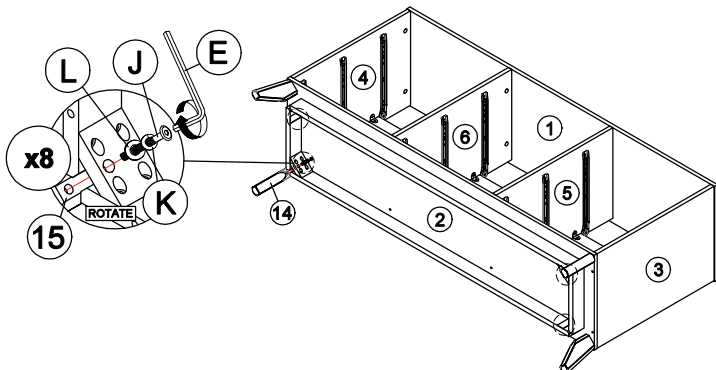
Connect panel (2) to panel (3), (4), (5) and (6) by using hardware C and E.
(Repeat 8 times.)



* In this step hardware B are pre-inserted.

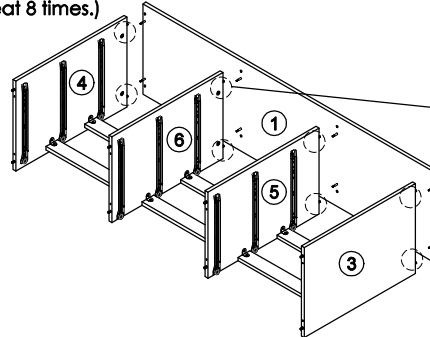
STEP 11

Assemble part 15 into panel (2) by using hardware E, J, K and L.
(Repeat 2 times for each Leg.)



STEP 8

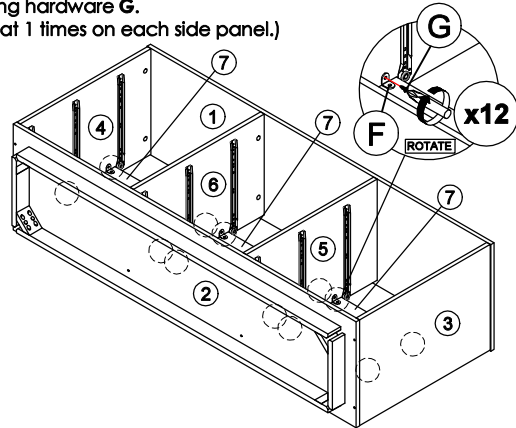
- Attach panel (3), (4), (5) and (6) to panel (1).
- Insert all hardware A2 into A1.
- Rotate all A1 until tight.
- Apply A3 onto all A1.
(Repeat 8 times.)



* In this step hardware A1, A2 and B are pre-inserted.

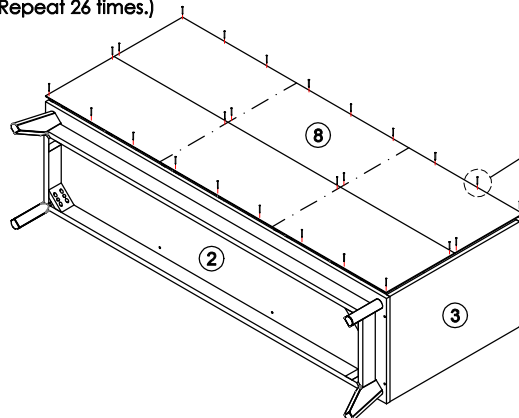
STEP 10

Assemble hardware F on panel (7) to panel (3), (4), (5) and (6) by using hardware G.
(Repeat 1 times on each side panel.)

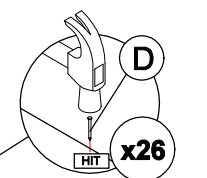
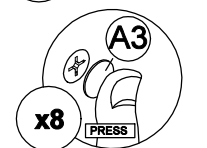
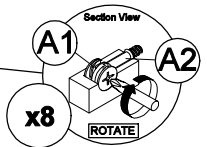


STEP 12

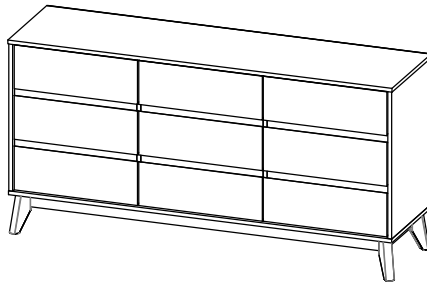
Assemble panel (8) to entire body with hardware D.
(Repeat 26 times.)



OR



CODING
- 345051



ISO 9001:2015
Reg. No. 000435-1-MY-1-QM

nuhoom.com

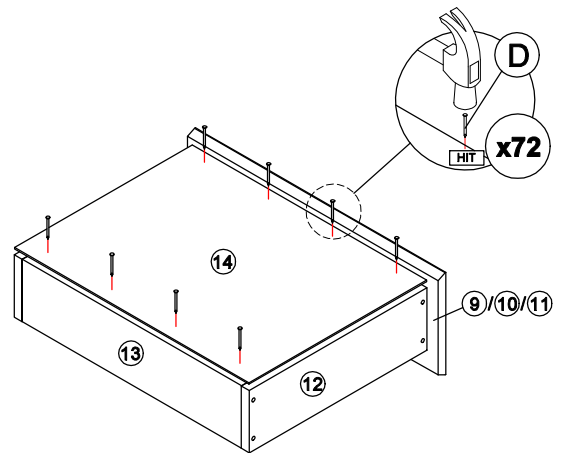
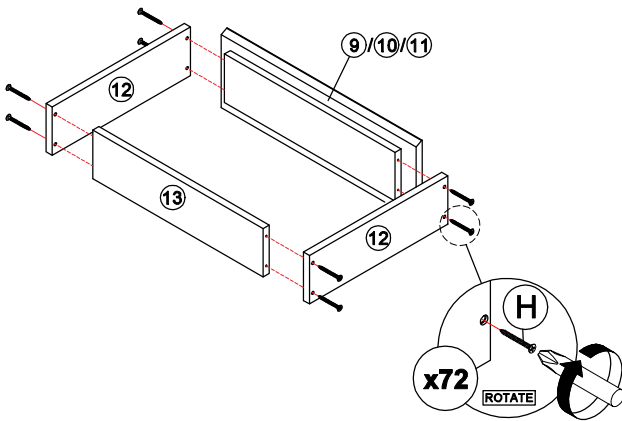
STEP 13

Assemble panel (12) with panel (9) or (10) or (11) and (13) by using hardware H.
(Repeat 8 times for each drawer.)
* In this step only show one of the drawers.



STEP 14

Assemble panel (14) to entire body with hardware D.
(Repeat 8 times for each drawer.)
* In this step only show one of the drawers.



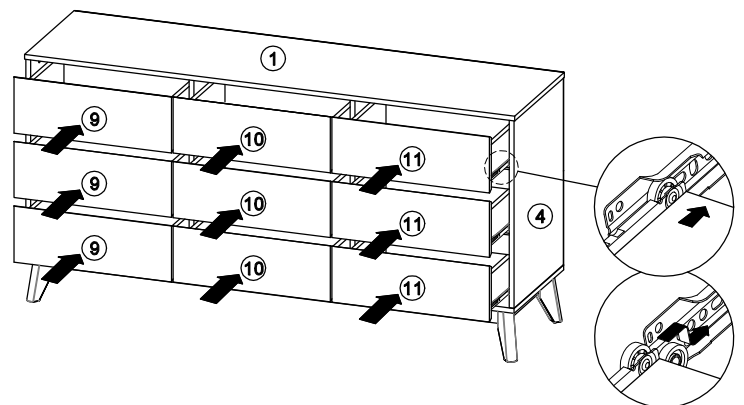
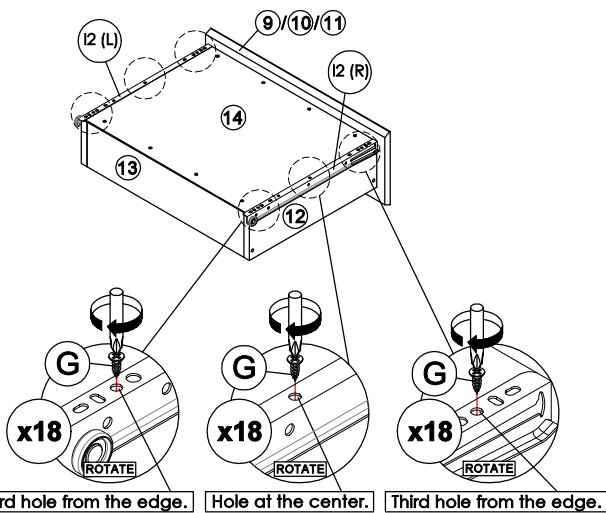
STEP 15

Assemble hardware 12 (L/R) to panel (14) by using hardware G.
(Repeat 3 times for each hardware.)
* In this step only show one of the drawers.



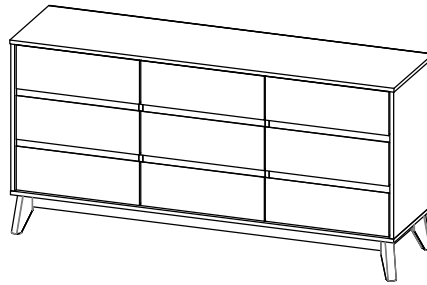
STEP 16

Put all the drawer in place along the drawer slides.



*Hardware 12 (L/R) shall be leaning against panel (9) or (10) or (11) when assembling.

CODING
- 345051

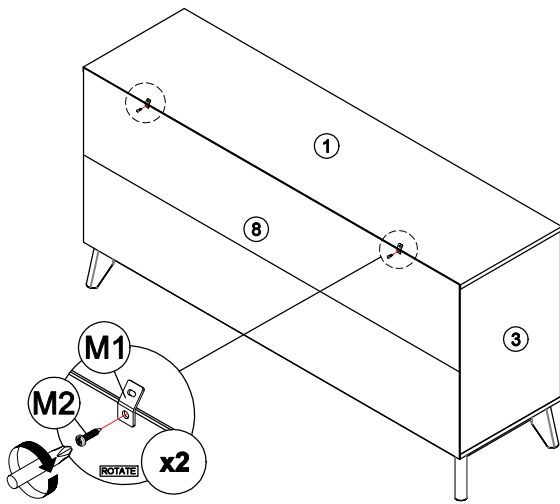


ISO 9001:2015
Reg. No. 000435-1-MY-1-QMS

nuhoom.com

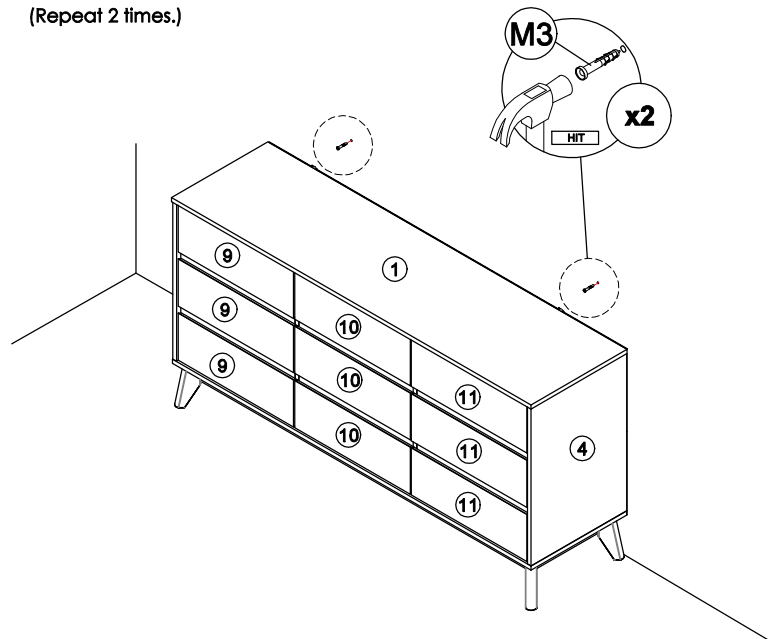
STEP 17

Assemble hardware **M1** into panel **(1)** and **(8)** by using hardware **M2**.
(Repeat 2 times.)



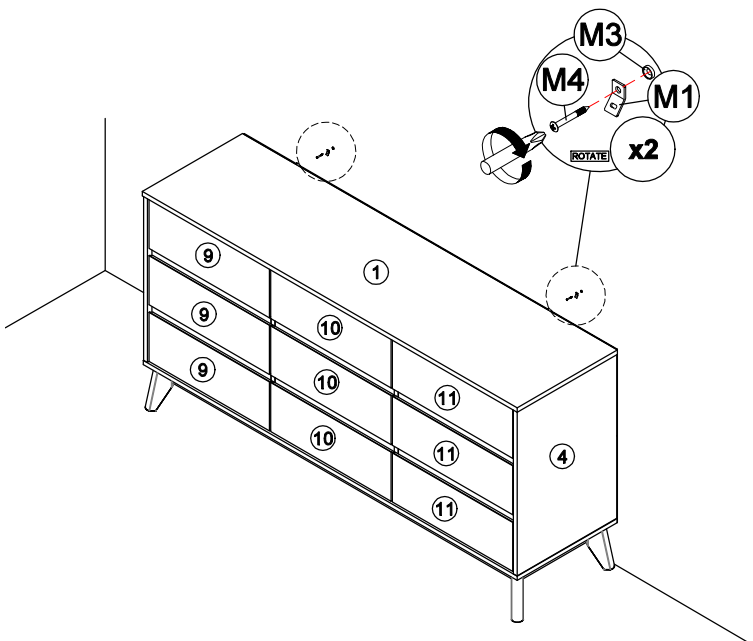
STEP 18

- Mark and use the power drill to drill a hole on the wall.
- Hit hardware **M3** into the wall.
(Repeat 2 times.)



STEP 19

Assemble hardware **M1** to **M3** by using hardware **M4**.
(Repeat 2 times.)



STEP 20

- Connect two of the hardware **M1** by using hardware **M5**.
- Tighten the hardware **M5**.
(Repeat 2 times.)

