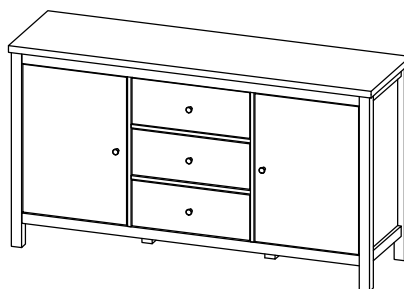


## CODING

- 345045



ISO 9001:2015  
Reg. No. 00005-1-INT-1-QMS

nuhoom.com

Read the instructions carefully. Remove all the wrappings, staples and straps from the carton. Refer to the hardware and furniture part list for guidance. Make sure that you have all the parts before you start assembling. Place all the wooden furniture parts on a clean, flat and soft surface, such as a carpet or rubbermat to prevent scratches.

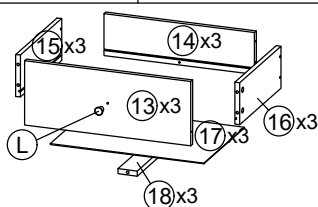
### CAUTION

KEEP ALL THE PARTS OUT OF CHILDREN'S REACH.

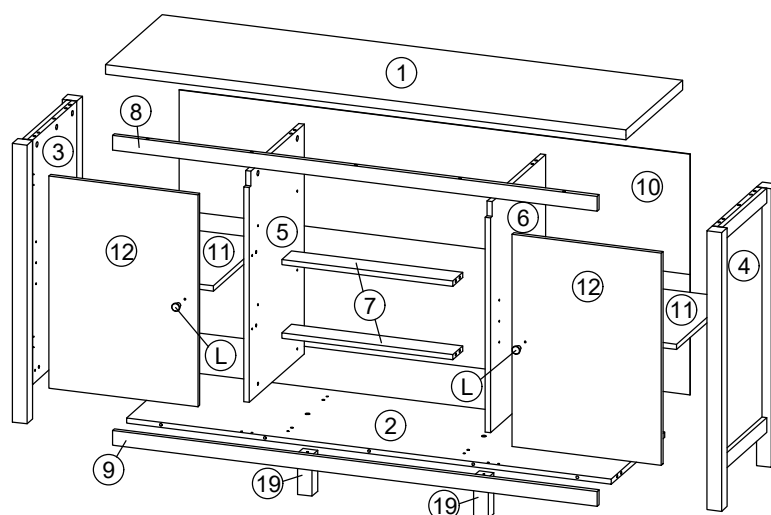
HARDWARE			
A	MINI FIX	A1  A2  A3	44 SETS
B	M8 X 30MM WOOD DOWEL		24 PCS
C	M6 X 50MM CSK CAP WOOD SCREW		4 PCS
D	ALLEN KEY M4		1 PC
E	M3.5 X 16MM C.B SCREW		60 PCS
F	M4 X 30MM C.B SCREW		5 PCS
G	M4 X 38MM C.B SCREW		12 PCS
H	5/8 NAIL		30 PCS
I	5/8 PVC NAIL LEG		4 PCS
J	METAL SHELF SUPPORT		8 PCS
K	STOPPER(2 PIN)		2 PCS
L	311 KNOD		5 PCS
M	SOFT CLOSING 7/8 HINGES		4 PCS
N	14" DRAWER SLIDE	N1 (L/R) N2 (L/R)	3 SETS

TIPPING PACK WITH A1			2 SETS

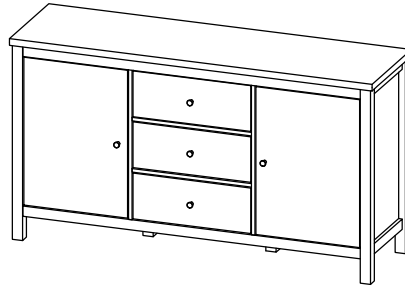
SELF-PREPARED TOOLS: Tools below are NOT included in package.	
	SCREWDRIVER
	HAMMER



PART LIST		QTY
1	TOP PANEL	1 PC
2	BOTTOM PANEL	1 PC
3	SIDE PANEL (L)	1 PC
4	SIDE PANEL (R)	1 PC
5	CENTER PANEL (L)	1 PC
6	CENTER PANEL (R)	1 PC
7	MIDDLE BONE	2 PCS
8	FRONT RAIL TOP	1 PC
9	FRONT RAIL BOTTOM	1 PC
10	BACK PANEL	1 PC
11	SHELF PANEL	2 PCS
12	DOOR PANEL	2 PCS
13	DRAWER FRONT	3 PCS
14	DRAWER BACK	3 PCS
15	DRAWER SIDE (L)	3 PCS
16	DRAWER SIDE (R)	3 PCS
17	DRAWER BOTTOM	3 PCS
18	DRAWER BONE	3 PCS
19	CENTER SUPPORT LEG	2 PCS



**CODING**  
- 345045

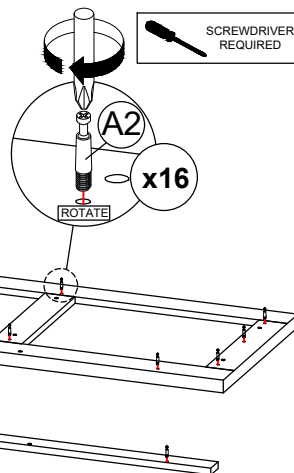


ISO 9001:2015  
Reg. No. 00005-1-INT-1-QMS

nuhoom.com

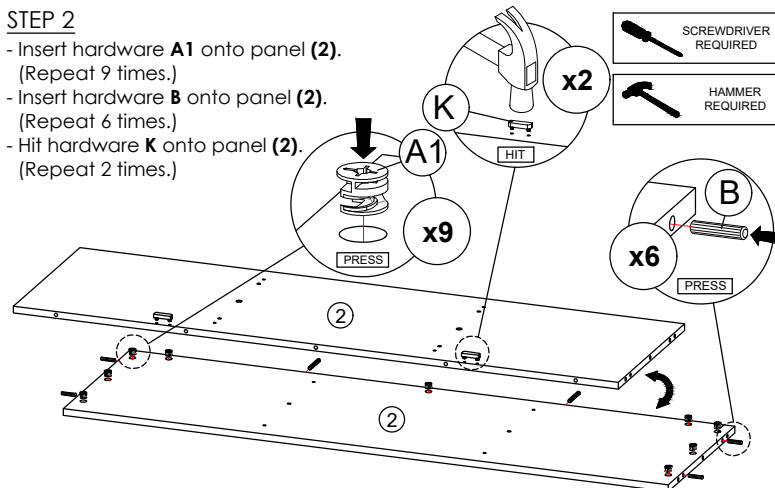
### STEP 1

- Insert hardware **A2** onto panel (1) and (9).  
(Repeat 16 times.)



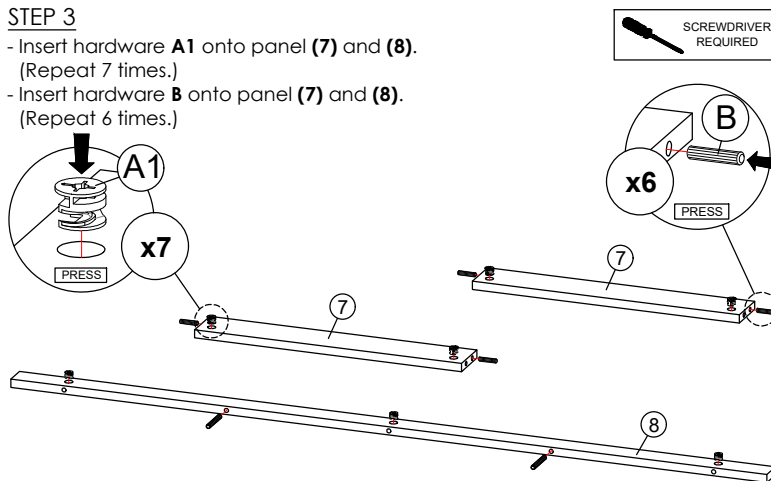
### STEP 2

- Insert hardware **A1** onto panel (2).  
(Repeat 9 times.)
- Insert hardware **B** onto panel (2).  
(Repeat 6 times.)
- Hit hardware **K** onto panel (2).  
(Repeat 2 times.)



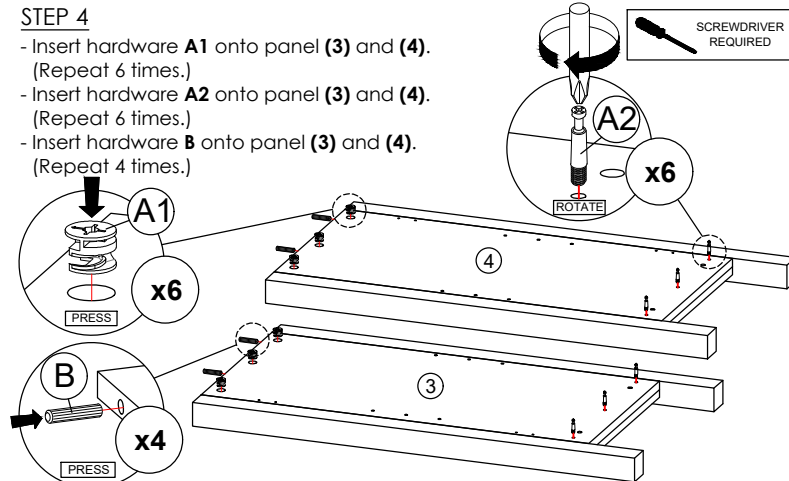
### STEP 3

- Insert hardware **A1** onto panel (7) and (8).  
(Repeat 7 times.)
- Insert hardware **B** onto panel (7) and (8).  
(Repeat 6 times.)



### STEP 4

- Insert hardware **A1** onto panel (3) and (4).  
(Repeat 6 times.)
- Insert hardware **A2** onto panel (3) and (4).  
(Repeat 6 times.)
- Insert hardware **B** onto panel (3) and (4).  
(Repeat 4 times.)

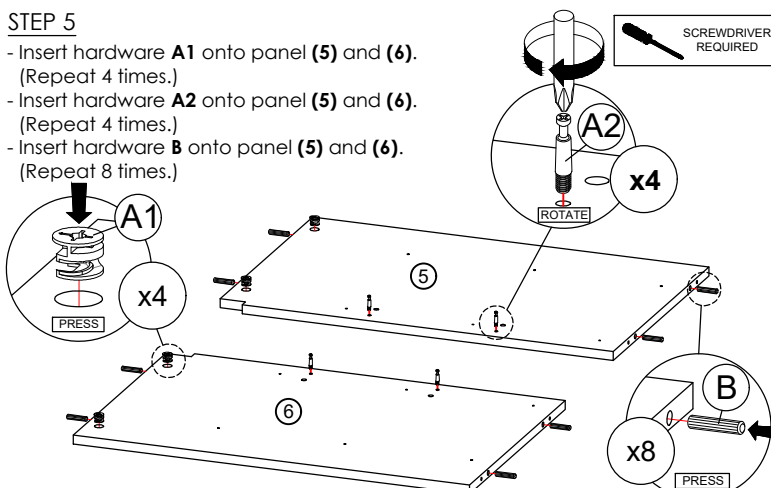


\* Ensure the arrows on hardware **A1** point towards mounting positions.

\* Ensure the arrows on hardware **A1** point towards mounting positions.

### STEP 5

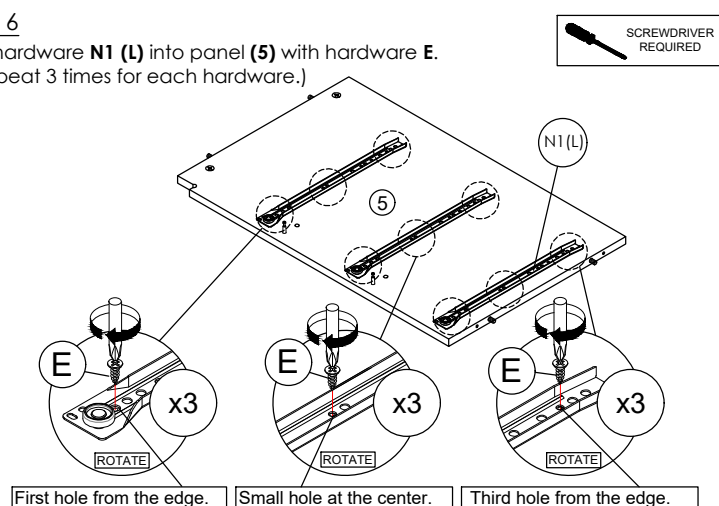
- Insert hardware **A1** onto panel (5) and (6).  
(Repeat 4 times.)
- Insert hardware **A2** onto panel (5) and (6).  
(Repeat 4 times.)
- Insert hardware **B** onto panel (5) and (6).  
(Repeat 8 times.)



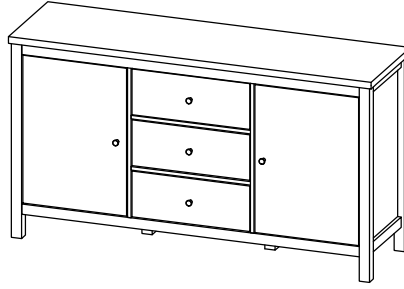
\* Ensure the arrows on hardware **A1** point towards mounting positions.

### STEP 6

- Fix hardware **N1 (L)** into panel (5) with hardware **E**.  
(Repeat 3 times for each hardware.)



**CODING**  
- 345045

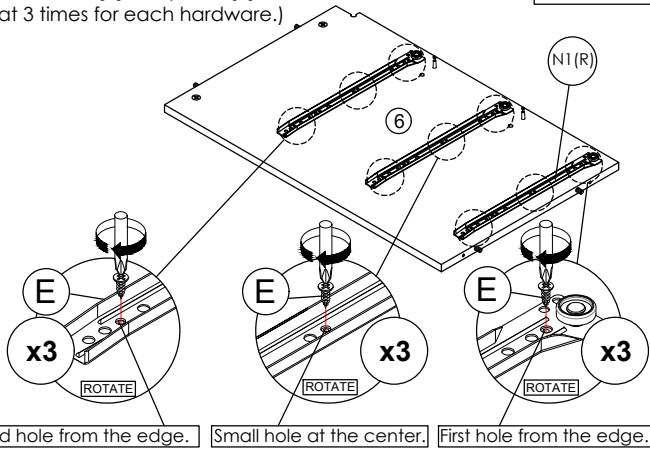


ISO 9001:2015  
Reg. No. 00005-1-INT-1-QMS

nuhoom.com

**STEP 7**

- Fix hardware **N1 (R)** into panel **(6)** with hardware **E**.  
(Repeat 3 times for each hardware.)

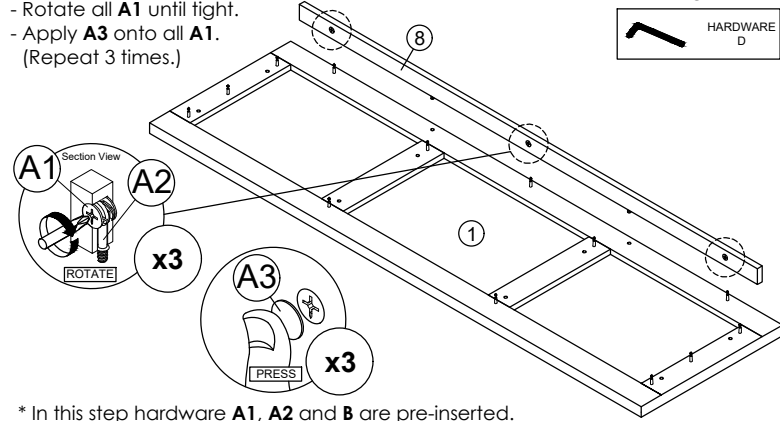


**STEP 8**

- Attach panel **(8)** to panel **(1)**.
- Insert all hardware **A2** into **A1**.
- Rotate all **A1** until tight.
- Apply **A3** onto all **A1**.  
(Repeat 3 times.)



OR



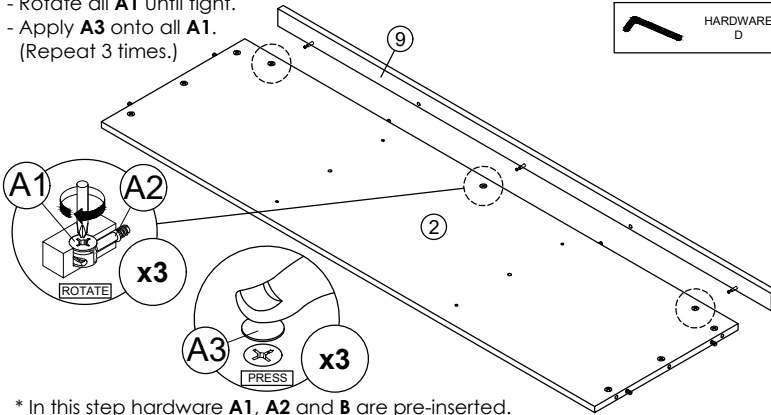
\* In this step hardware **A1**, **A2** and **B** are pre-inserted.

**STEP 9**

- Attach panel **(9)** to panel **(2)**.
- Insert all hardware **A2** into **A1**.
- Rotate all **A1** until tight.
- Apply **A3** onto all **A1**.  
(Repeat 3 times.)



OR



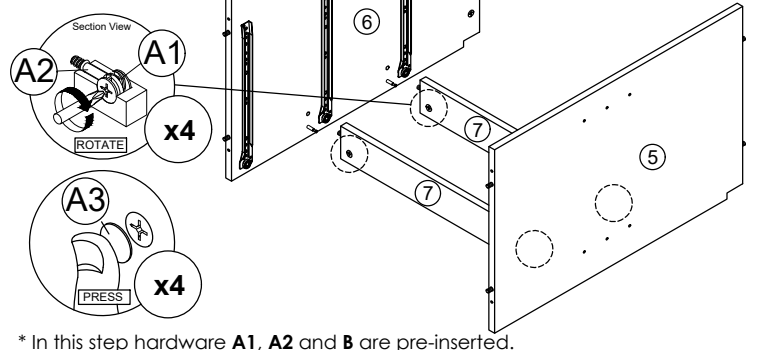
\* In this step hardware **A1**, **A2** and **B** are pre-inserted.

**STEP 10**

- Attach panel **(7)** to panel **(5)** and **(6)**.
- Insert all hardware **A2** into **A1**.
- Rotate all **A1** until tight.
- Apply **A3** onto all **A1**.  
(Repeat 4 times.)



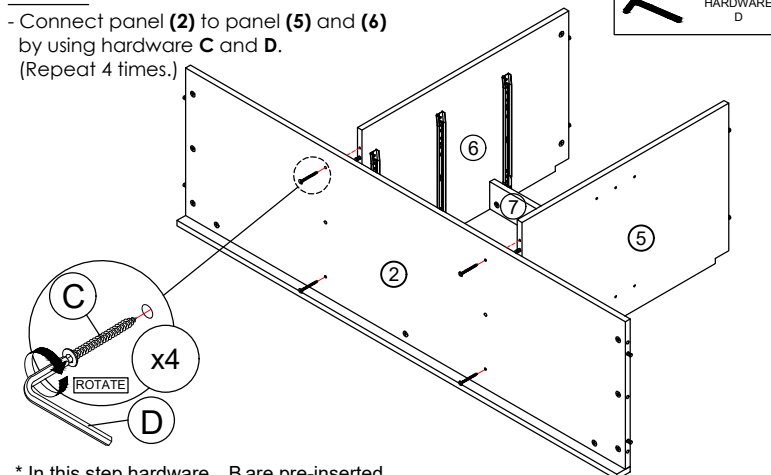
OR



\* In this step hardware **A1**, **A2** and **B** are pre-inserted.

**STEP 11**

- Connect panel **(2)** to panel **(5)** and **(6)** by using hardware **C** and **D**.  
(Repeat 4 times.)



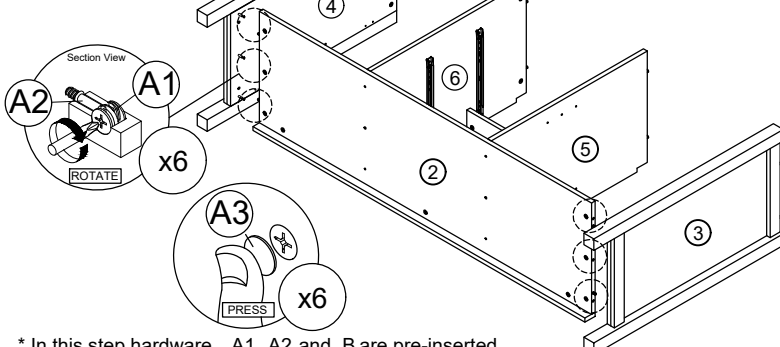
\* In this step hardware **B** are pre-inserted.

**STEP 12**

- Attach panel **(3)** and **(4)** to panel **(2)**.
- Insert all hardware **A2** into **A1**.
- Rotate all **A1** until tight.
- Apply **A3** onto all **A1**.  
(Repeat 6 times.)

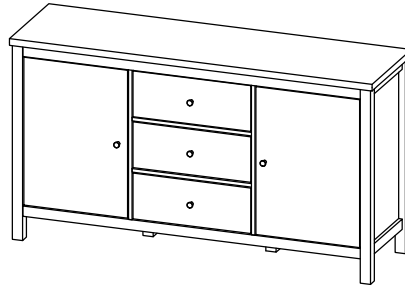


OR



\* In this step hardware **A1**, **A2** and **B** are pre-inserted.

**CODING**  
- 345045

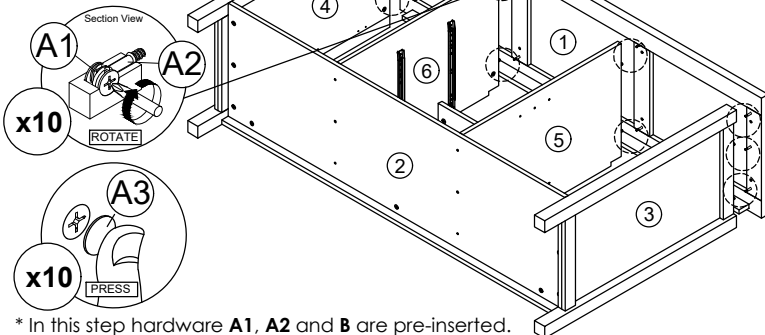
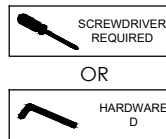


ISO 9001:2015  
Reg. No. 00005-1-MIT-1-0205

nuhoom.com

**STEP 13**

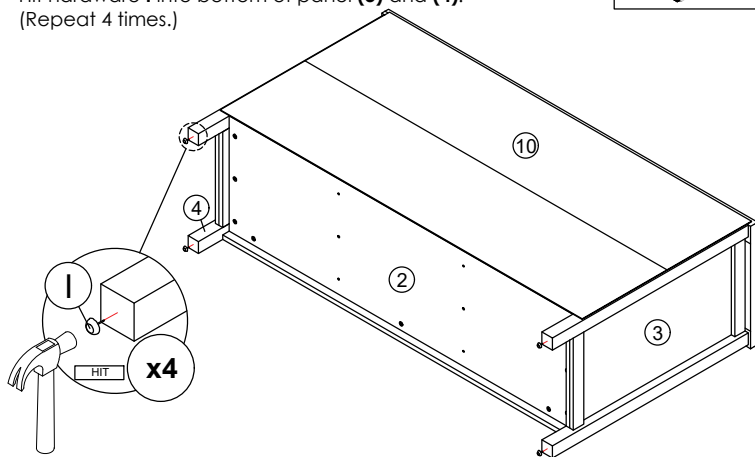
- Attach panel (1) to panel (3), (4), (5) and (6).
- Insert all hardware A2 into A1.
- Rotate all A1 until tight.
- Apply A3 onto all A1.
- (Repeat 10 times.)



\* In this step hardware A1, A2 and B are pre-inserted.

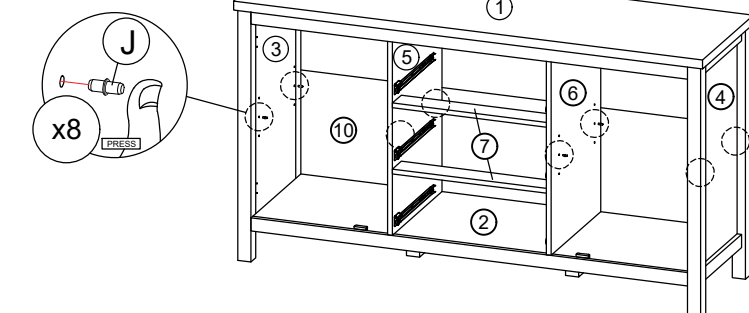
**STEP 15**

- Hit hardware I into bottom of panel (3) and (4).
- (Repeat 4 times.)



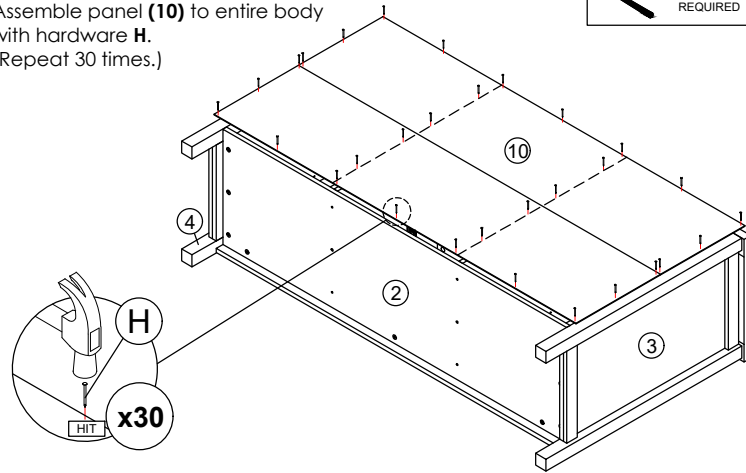
**STEP 17**

- Insert hardware J into mounting positions on panel (3), (4), (5) and (6) by hand.
- (Repeat 8 times.)



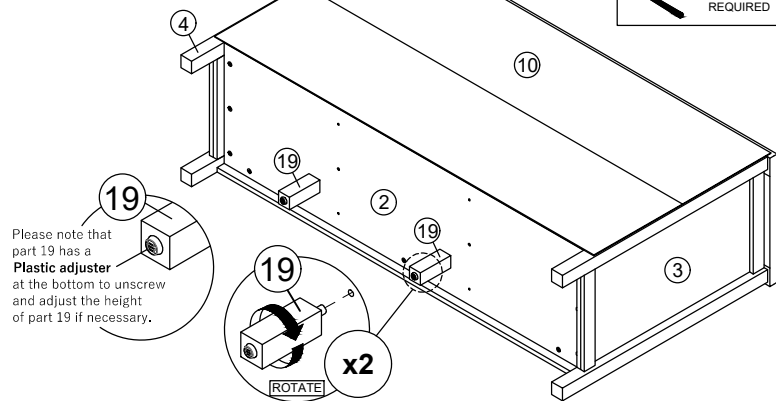
**STEP 14**

- Assemble panel (10) to entire body with hardware H.
- (Repeat 30 times.)



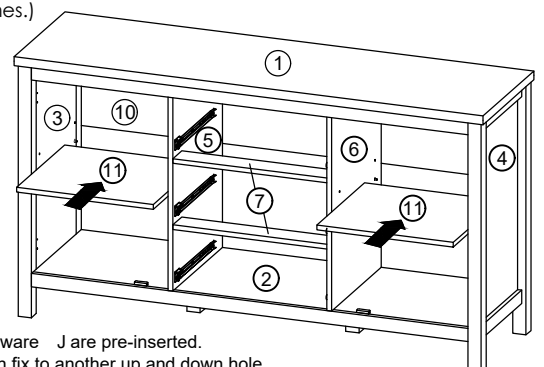
**STEP 16**

- Assemble part 19 into panel (2).
- (Repeat 2 times.)



**STEP 18**

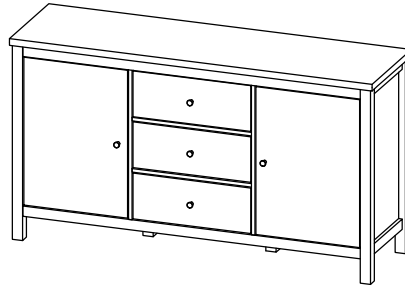
- Assemble panel (11) into between panel (3) and (5).
- (Repeat 1 times.)
- Assemble panel (11) into between panel (4) and (6).
- (Repeat 1 times.)



\*In this step hardware J are pre-inserted.

\*Hardware J can fix to another up and down hole on panel (3), (4), (5) and (6) for adjust panel (11) to high or lower.

**CODING**  
- 345045

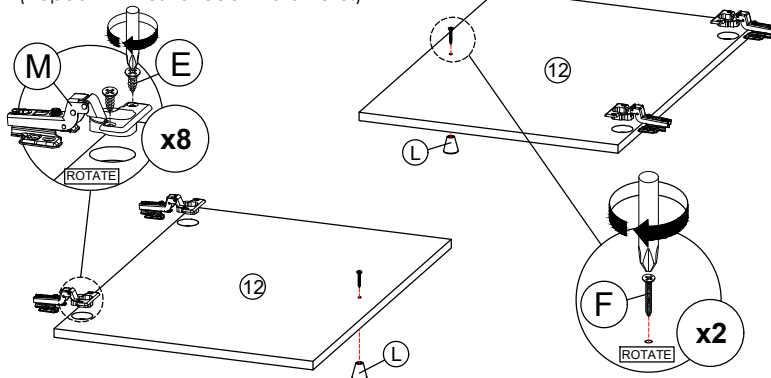


ISO 9001:2015  
Reg. No. 00005-1-INT-1-QMS

nuhoom.com

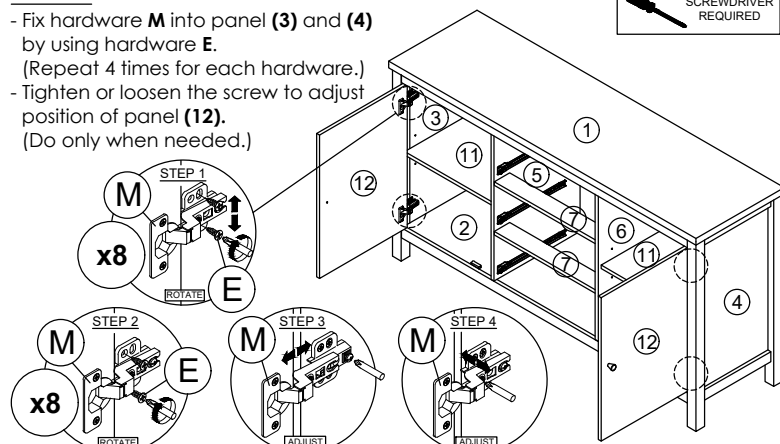
**STEP 19**

- Fix hardware **M** onto panel **(12)** by using hardware **E**.  
(Repeat 2 times for each hardware.)
- Fix hardware **L** onto panel **(12)** by using hardware **F**.  
(Repeat 1 times for each hardware.)



**STEP 20**

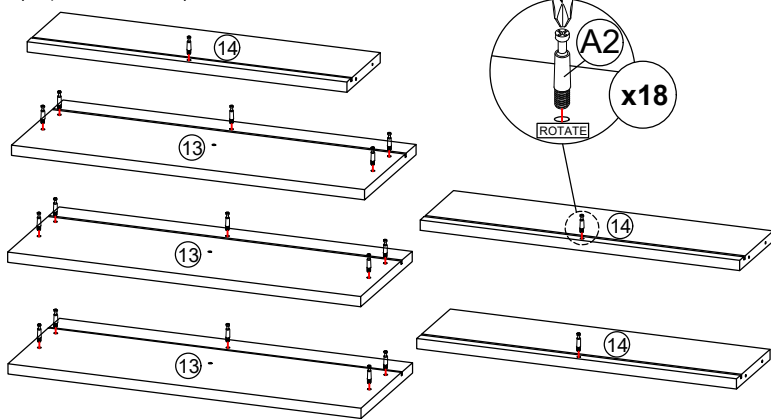
- Fix hardware **M** into panel **(3)** and **(4)** by using hardware **E**.  
(Repeat 4 times for each hardware.)
- Tighten or loosen the screw to adjust position of panel **(12)**.  
(Do only when needed.)



\* In this step hardware **M** have been assembled in panel **(12)**.

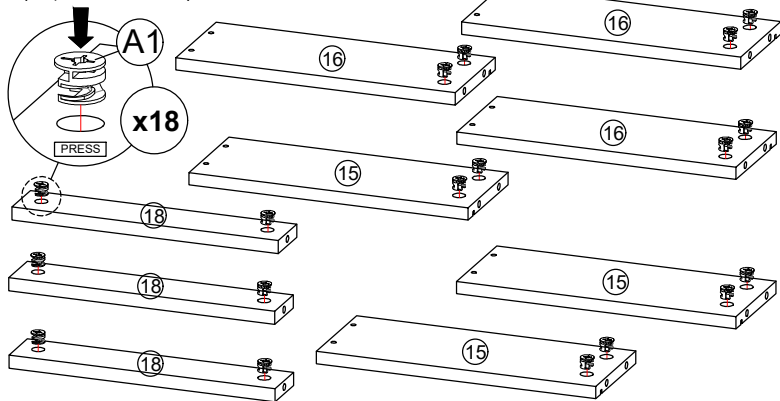
**STEP 21**

- Insert hardware **A2** onto panel **(13)** and **(14)**.  
(Repeat 18 times.)



**STEP 22**

- Insert hardware **A1** onto panel **(15)**, **(16)** and **(18)**.  
(Repeat 18 times.)



\* Ensure the arrows on hardware **A1** point towards mounting positions.

**STEP 23**

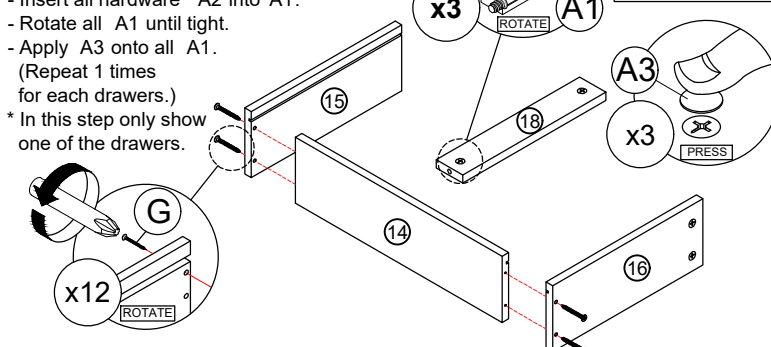
- Assemble panel **(15)** and **(16)** with panel **(14)** by using hardware **G**.  
(Repeat 4 times for each drawers.)
- Attach panel **(18)** to panel **(14)**.
- Insert all hardware **A2** into **A1**.
- Rotate all **A1** until tight.
- Apply **A3** onto all **A1**.  
(Repeat 1 times for each drawers.)



OR



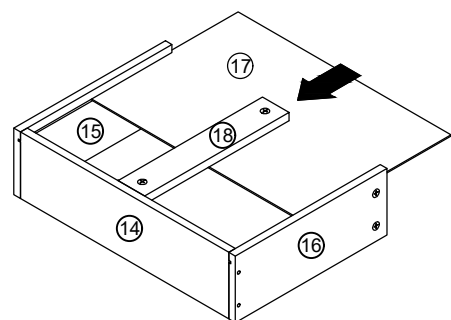
\* In this step only show one of the drawers.



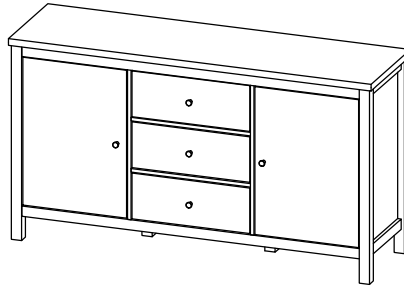
\* In this step hardware **A1**, **A2** and **B** are pre-inserted.

**STEP 24**

- Insert panel **(17)** along the slot.  
(Repeat 1 times for each drawers.)
- \* In this step only show one of the drawers.



**CODING**  
- 345045

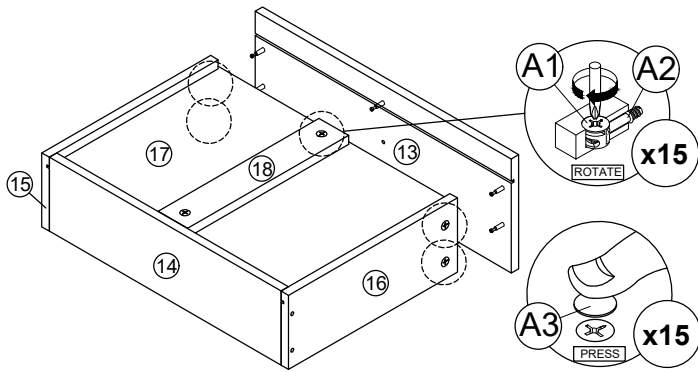
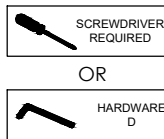


ISO 9001:2015  
Reg. No. 00005-1-MIT-1-QMS

nuhoom.com

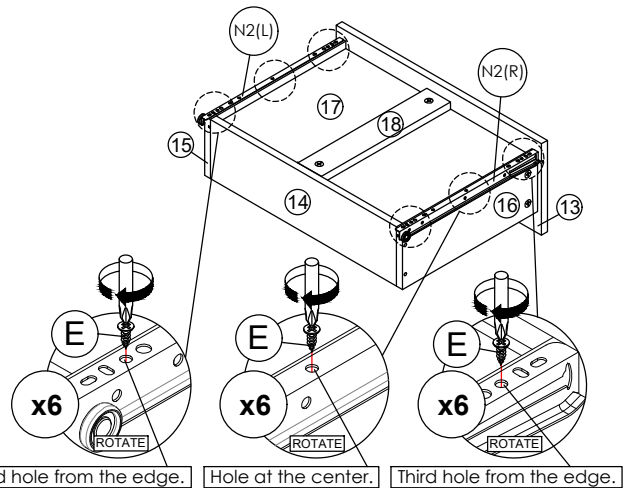
**STEP 25**

- Attach panel (13) to panel (15), (16) and (18).
  - Insert all hardware A2 into A1.
  - Rotate all A1 until tight.
  - Apply A3 onto all A1. (Repeat 5 times for each drawers.)
- \* In this step only show one of the drawers.



**STEP 26**

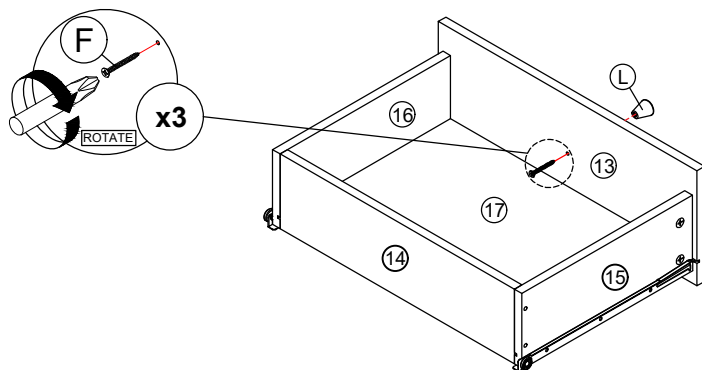
- Assemble hardware N2 (L/R) to panel (15) and (16) by using hardware E. (Repeat 3 times for each hardware.)
- \* In this step only show one of the drawers.



\* In this step hardware A1, A2 and B are pre-inserted.

**STEP 27**

- Fix hardware L onto panel (13) by using hardware F. (Repeat 1 times for each drawers.)
- \* In this step only show one of the drawers.



\*Hardware N2 (L/R) shall be leaning against panel (13) when assembling.

**STEP 28**

- Put all the drawer in place along the drawer slides.

