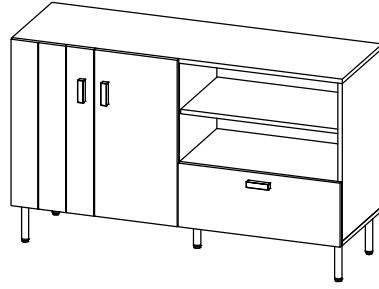


CODING
- 344023



ISO 9001:2015
Reg. No. 00005-1-2017-1-QMS

nuhoom.com

Read the instructions carefully. Remove all the wrappings, staples and straps from the carton. Refer to the hardware and furniture part list for guidance. Make sure that you have all the parts before you start assembling. Place all the wooden furniture parts on a clean, flat and soft surface, such as a carpet or rubbermat to prevent scratches.

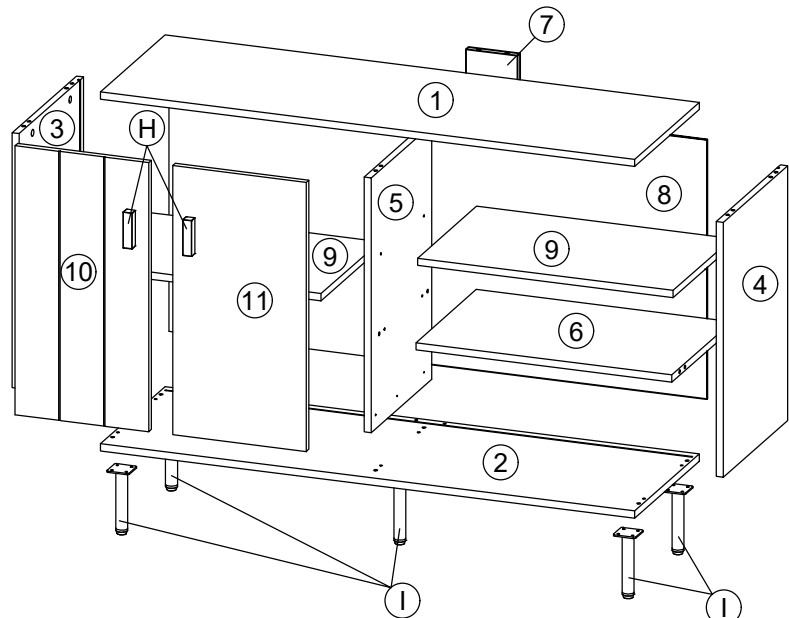
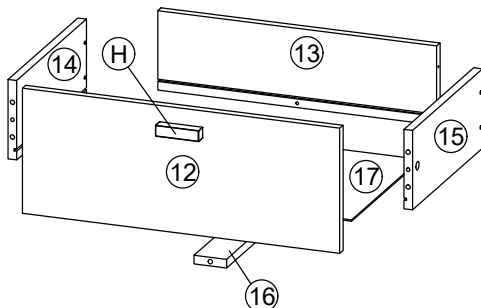
CAUTION
KEEP ALL THE PARTS OUT OF CHILDREN'S REACH.

PART LIST		QTY
1	TOP PANEL	1 PC
2	BOTTOM PANEL	1 PC
3	SIDE PANEL (L)	1 PC
4	SIDE PANEL (R)	1 PC
5	CENTER PANEL	1 PC
6	MIDDLE PANEL	1 PC
7	BACK SUPPORT	1 PC
8	BACK PANEL	1 PC
9	SHELF PANEL	2 PCS
10	DOOR PANEL (L)	1 PC
11	DOOR PANEL (R)	1 PC
12	DRAWER FRONT	1 PC
13	DRAWER BACK	1 PC
14	DRAWER SIDE (L)	1 PC
15	DRAWER SIDE (R)	1 PC
16	DRAWER BONE	1 PC
17	DRAWER BOTTOM	1 PC

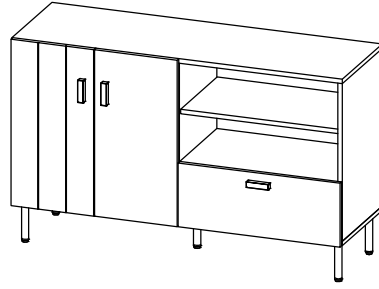
HARDWARE			
A	MINI FIX	A1 A2 A3	16 SETS
B	M8 X 30MM WOOD DOWEL		20 PCS
C	M6 X 50MM CSK CAP WOOD SCREW		8 PCS
D	ALLEN KEY M4		1 PC
E	M3.5 X 16MM C.B SCREW		56 PCS
F	M4 X 32MM C.B SCREW		6 PCS
G	M4 X 38MM C.B SCREW		4 PCS
H	WOOD HANDLE (80MM)		3 PCS
I	METAL LEG 50 x 50 x H145MM (CENTER ROUND Ø25)		5 PCS
J	METAL SHELF SUPPORT		8 PCS
K	SOFT CLOSING 5/8 HINGES		4 PCS
L	14" DRAWER SLIDE	L1 (L/R) L2 (L/R)	1 SET

TIPPING PACK WITH AI			2 SETS
----------------------	--	--	---------------

SELF-PREPARED TOOLS: Tools below are NOT included in package.	
SCREWDRIVER	HAMMER



CODING
- 344023

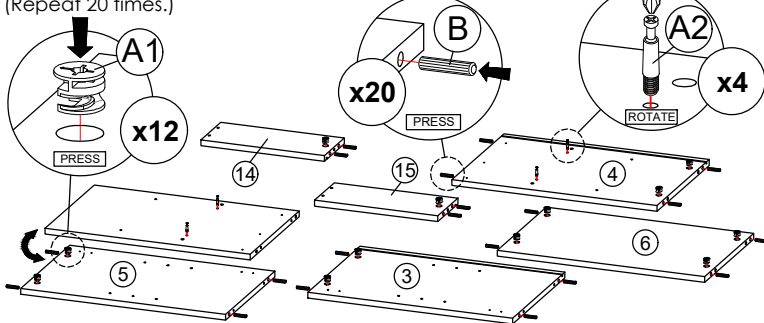
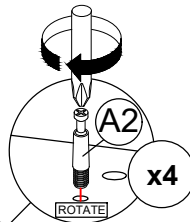


ISO 9001:2015
Reg. No. 00005-1-2017-1-QMS

nuhoom.com

STEP 1

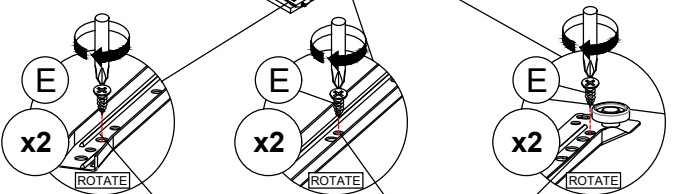
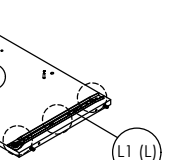
- Insert hardware **A1** onto panel (3), (4), (5), (6), (14) and (15). (Repeat 12 times.)
- Insert hardware **A2** onto panel (4) and (5). (Repeat 4 times.)
- Insert hardware **B** onto panel (3), (4), (5), (6), (14) and (15). (Repeat 20 times.)



* Ensure the arrows on hardware **A1** point towards mounting positions.

STEP 3

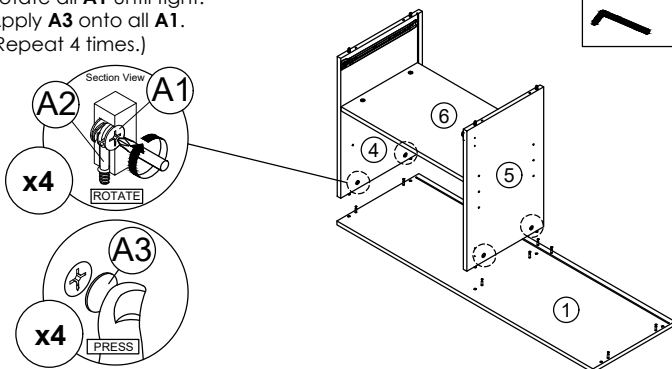
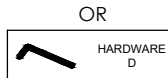
- Fix hardware **L1 (L)** into panel (5) with hardware **E**. (Repeat 3 times for each hardware.)
- Fix hardware **L1 (R)** into panel (4) with hardware **E**. (Repeat 3 times for each hardware.)



First hole from the edge. Small hole at the center. Third hole from the edge.

STEP 5

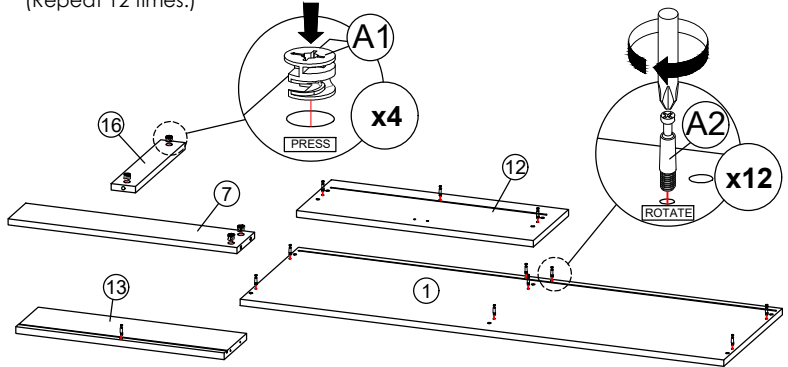
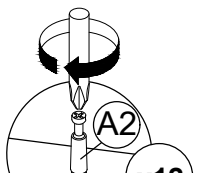
- Attach panel (4) and (5) to panel (1).
- Insert all hardware **A2** into **A1**.
- Rotate all **A1** until tight.
- Apply **A3** onto all **A1**. (Repeat 4 times.)



* In this step hardware **A1**, **A2** and **B** are pre-inserted.

STEP 2

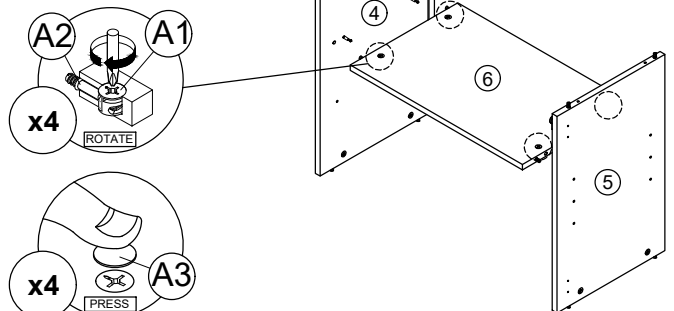
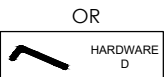
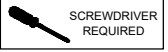
- Insert hardware **A1** onto panel (7) and (16). (Repeat 4 times.)
- Insert hardware **A2** onto panel (1), (12) and (13). (Repeat 12 times.)



* Ensure the arrows on hardware **A1** point towards mounting positions.

STEP 4

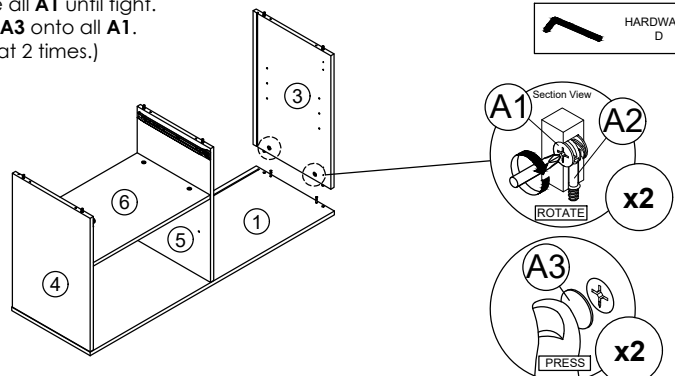
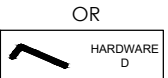
- Attach panel (4) and (5) to panel (6).
- Insert all hardware **A2** into **A1**.
- Rotate all **A1** until tight.
- Apply **A3** onto all **A1**. (Repeat 4 times.)



* In this step hardware **A1**, **A2** and **B** are pre-inserted.

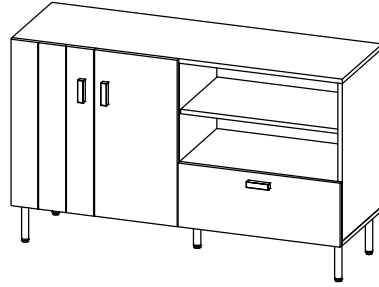
STEP 6

- Attach panel (3) to panel (1).
- Insert all hardware **A2** into **A1**.
- Rotate all **A1** until tight.
- Apply **A3** onto all **A1**. (Repeat 2 times.)



* In this step hardware **A1**, **A2** and **B** are pre-inserted.

CODING
- 344023

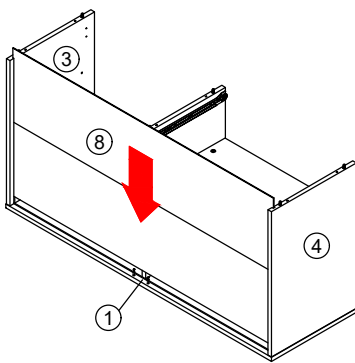


ISO 9001:2015
Reg. No. 00045-1-INT-1-QMS

nuhoom.com

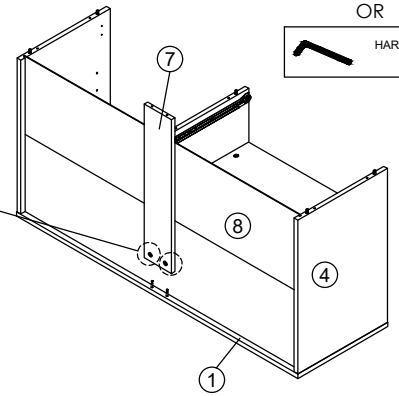
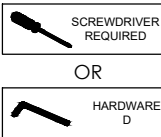
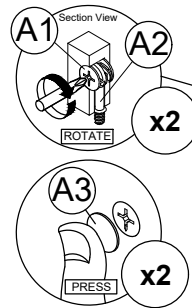
STEP 7

Insert the panel (8) along the slot.
(Repeat 1 times.)



STEP 8

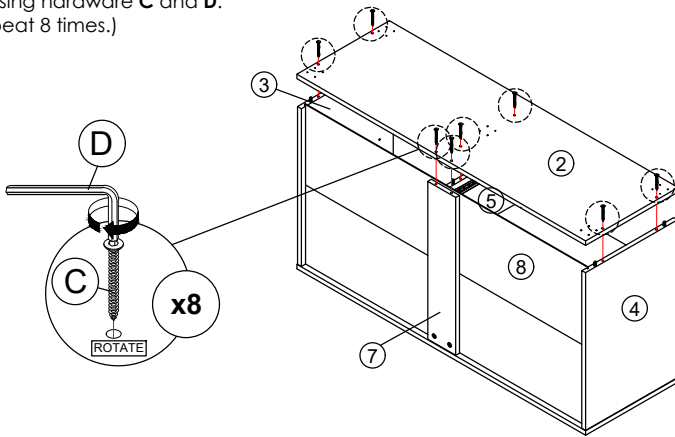
- Attach panel (7) to panel (1).
- Insert all hardware A2 into A1.
- Rotate all A1 until tight.
- Apply A3 onto all A1.
(Repeat 2 times.)



* In this step hardware A1, A2 and B are pre-inserted.

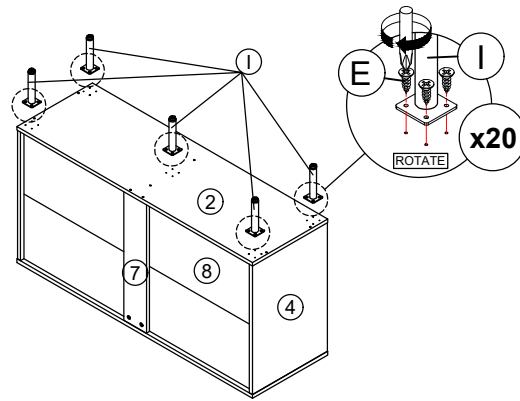
STEP 9

Connect panel (2) to panel (3), (4), (5) and (7)
by using hardware C and D.
(Repeat 8 times.)



STEP 10

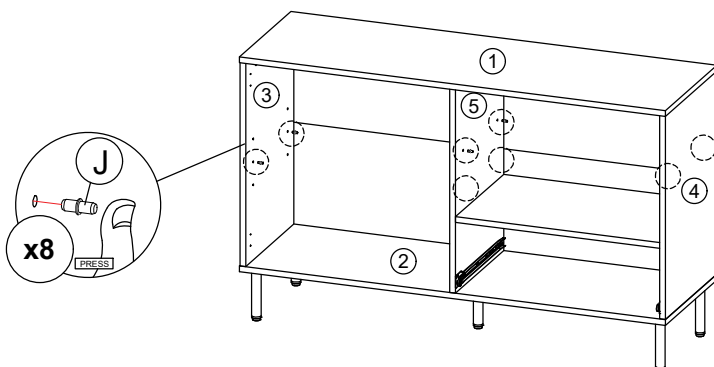
Assemble hardware I onto panel (2) by using hardware E.
(Repeat 4 times for each hardware.)



Please note that the hardware I has a **Plastic adjuster** at the bottom to unscrew and adjust the height of hardware I if necessary.

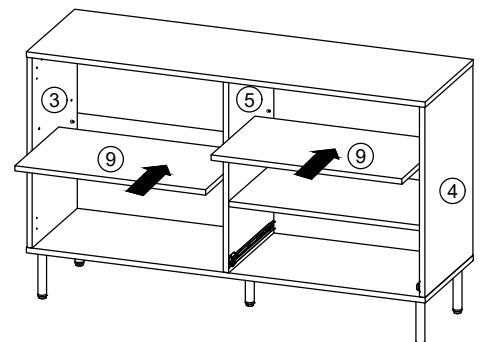
STEP 11

Insert hardware J into mounting positions on panel (3), (4), (5) by hand.
(Repeat 8 times.)



STEP 12

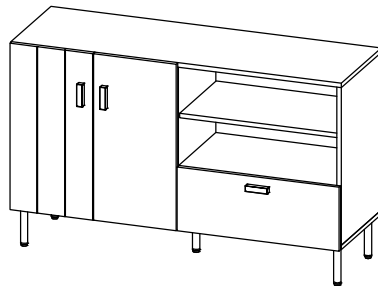
Assemble the panel (9) into between panel (3), (4) and (5).
(Repeat 2 times.)



* In this step hardware J are pre-inserted.

CODING

- 344023

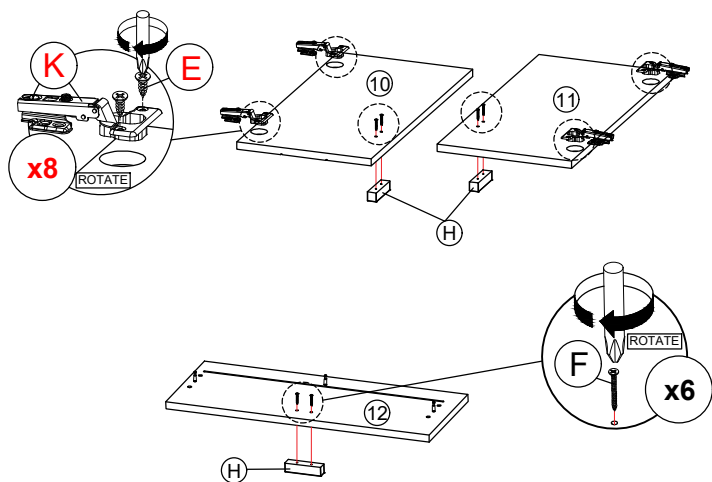


ISO 9001:2015
Reg. No. 000435-1-MF-1-QMS

nuhoom.com

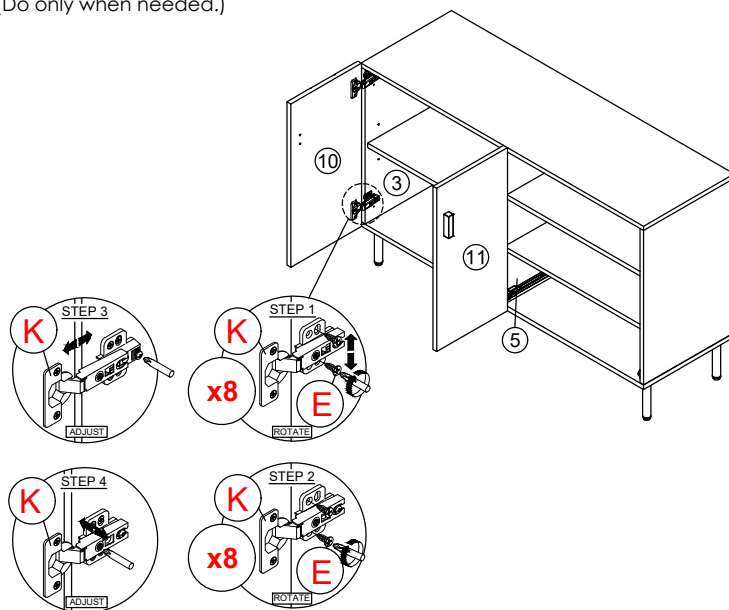
STEP 13

- Fix hardware **K** onto panel **(10)** and **(11)** by using hardware **E**. (Repeat 2 times for each hardware.)
- Fix hardware **H** onto panel **(10)**, **(11)** and **(12)** by using hardware **F**. (Repeat 2 times for each hardware.)



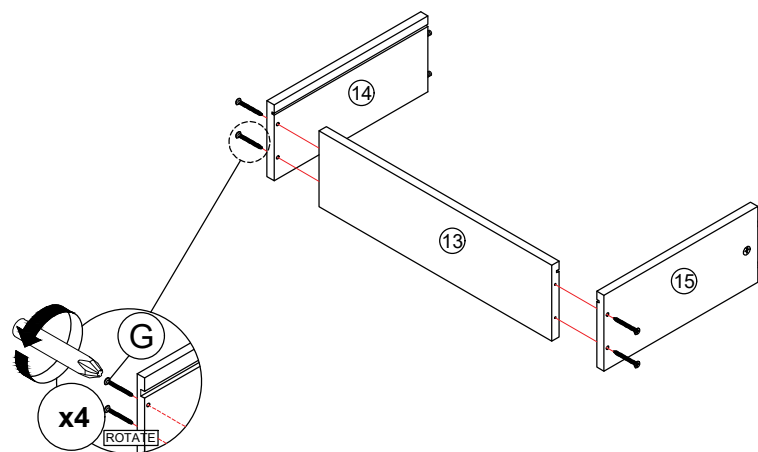
STEP 14

- Fix hardware **K** into panel **(3)** and **(5)** by using hardware **E**. (Repeat 4 times for each hardware.)
- Tighten or loosen the screw to adjust position of panel **(10)** and **(11)**. (Do only when needed.)



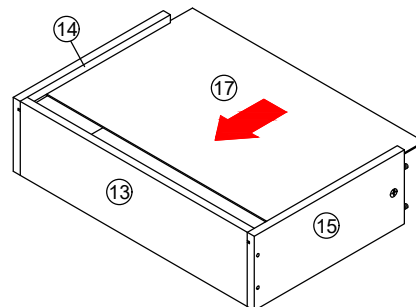
STEP 15

- Assemble panel **(14)** and **(15)** to panel **(13)** by using hardware **G**. (Repeat 4 times.)

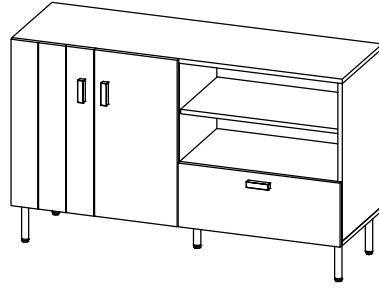


STEP 16

- Insert the panel **(17)** along the slot. (Repeat 1 times.)



CODING
- 344023

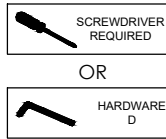


ISO 9001:2015
Reg. No. 000435-1-MTF-1-QMS

nuhoom.com

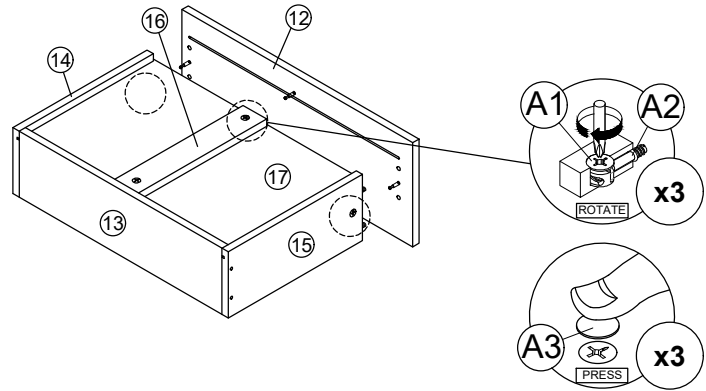
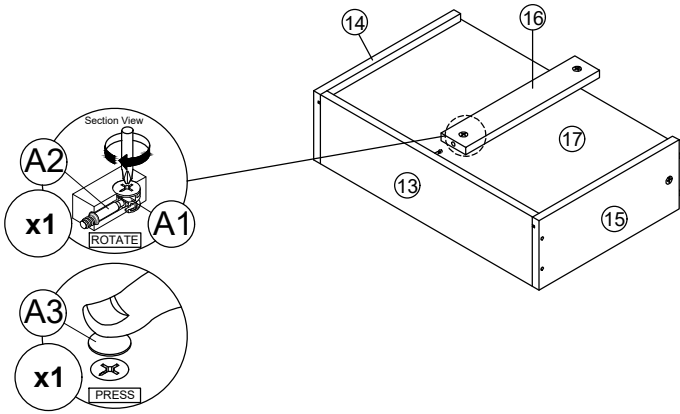
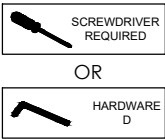
STEP 17

- Attach panel (16) to panel (13).
- Insert all hardware A2 into A1.
- Rotate all A1 until tight.
- Apply A3 onto all A1.
- (Repeat 1 times.)



STEP 18

- Attach panel (12) to panel (14), (15) and (16).
- Insert all hardware A2 into A1.
- Rotate all A1 until tight.
- Apply A3 onto all A1.
- (Repeat 3 times.)



* In this step hardware A1, A2 and B are pre-inserted.

STEP 19

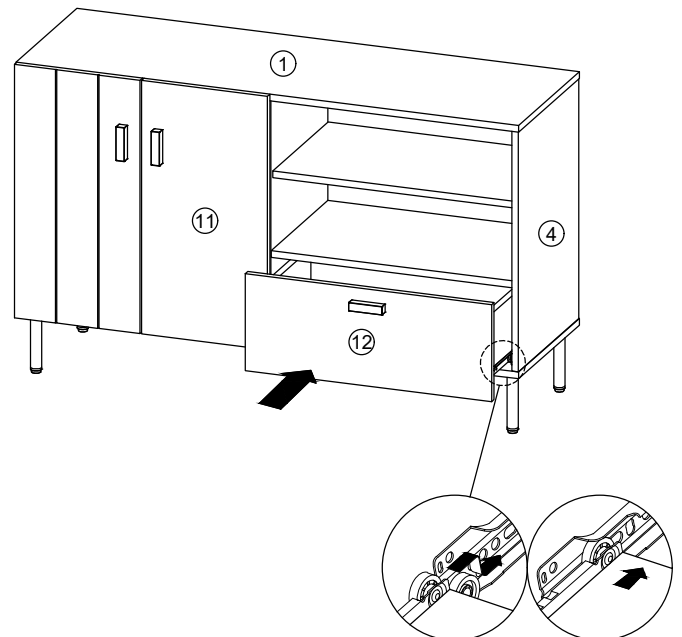
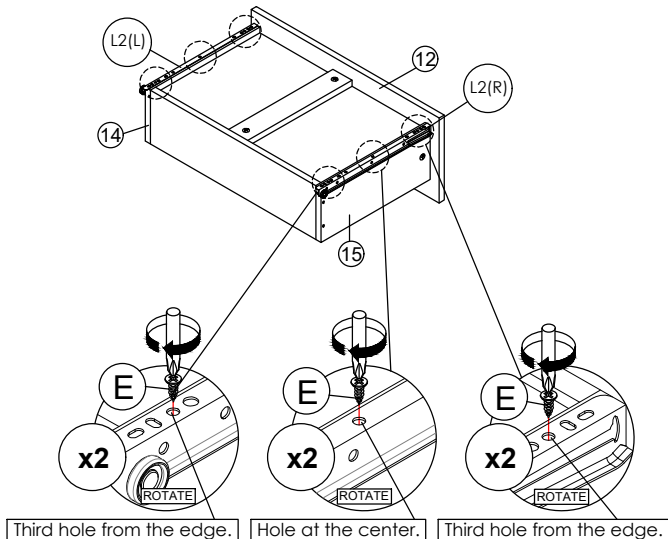
- Assemble hardware L2 (L/R) to panel (14) and (15) by using hardware E.
- (Repeat 3 times for each hardware.)



* In this step hardware A1, A2 and B are pre-inserted.

STEP 20

- Put all the drawer in place along the drawer slides.



*Hardware L2 (L/R) shall be leaning against panel (12) when assembling.