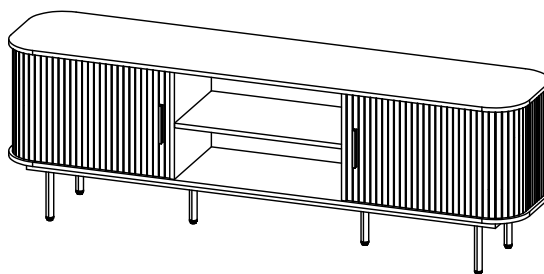


CODING
- 336103



ISO 9001:2015
Reg. No. 00005-1-2017-1-Q008

nuhoom.com

Read the instructions carefully. Remove all the wrappings, staples and straps from the carton. Refer to the hardware and furniture part list for guidance. Make sure that you have all the parts before you start assembling. Place all the wooden furniture parts on a clean, flat and soft surface, such as a carpet or rubbermat to prevent scratches.

CAUTION
KEEP ALL THE PARTS OUT OF CHILDREN'S REACH.

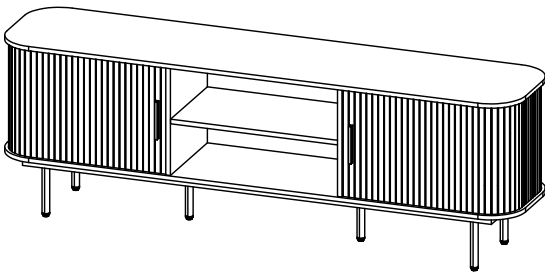
PART LIST		QTY
1	TOP PANEL	1 PC
2	BOTTOM PANEL	1 PC
3	SIDE PANEL (L)	1 PC
4	SIDE PANEL (R)	1 PC
5	CENTER PANEL (L)	1 PC
6	CENTER PANEL (R)	1 PC
7	MIDDLE PANEL	1 PC
8	SIDE SHELF PANEL	2 PCS
9	BACK SIDE	2 PCS
10	BACK PANEL (C)	1 PC
11	BACK PANEL (L/R)	2 PCS
12	SLIDING DOOR	2 PCS

HARDWARE			
A	MINI FIX	A1 A2 A3	14 SETS
B	M8 X 30MM WOOD DOWEL		24 PCS
C	M6 X 50MM CSK CAP WOOD SCREW		10 PCS
D	ALLEN KEY M4		1 PC
E	PAN HEAD SCREW M4 X 12MM		8 PCS
F	METAL BRACKET		4 PCS
G	M3.5 X 16MM C.B SCREW		4 PCS
H	PVC HANDLE 7050.96		2 PCS
I	METAL SHELF SUPPORT		8 PCS
J	STUD 192 WITH SCREW	J1 J2	8 PCS
K	ROSE METAL LEG		6 PCS
	TIPPING PACK WITH A1		2 SETS

SELF-PREPARED TOOLS: Tools below are NOT included in package.

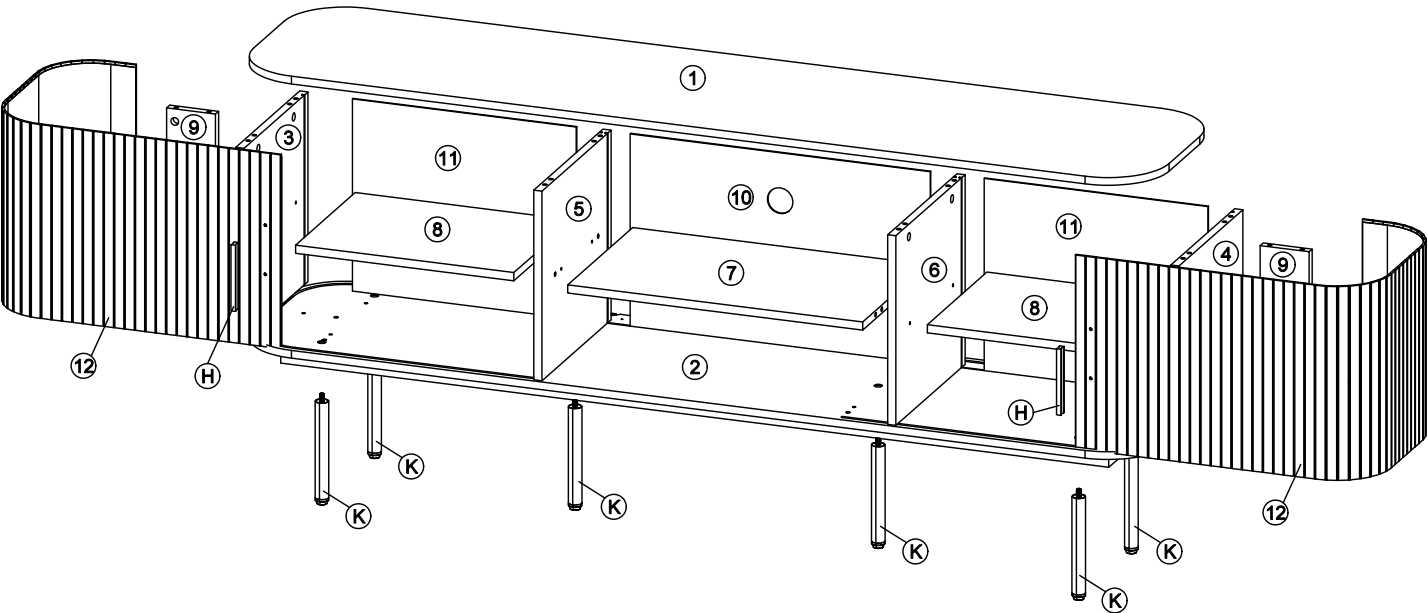
	SCREWDRIVER		HAMMER
--	-------------	--	--------

CODING
- 336103

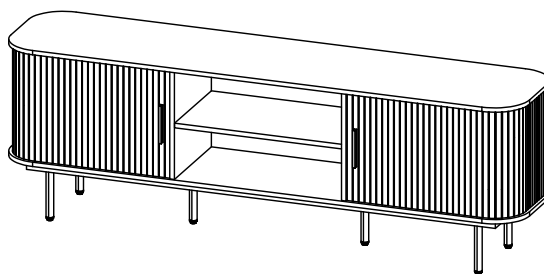


ISO 9001:2015
Reg. No. 000-GS-1-2017-1-Q008

nuhoom.com



CODING
- 336103

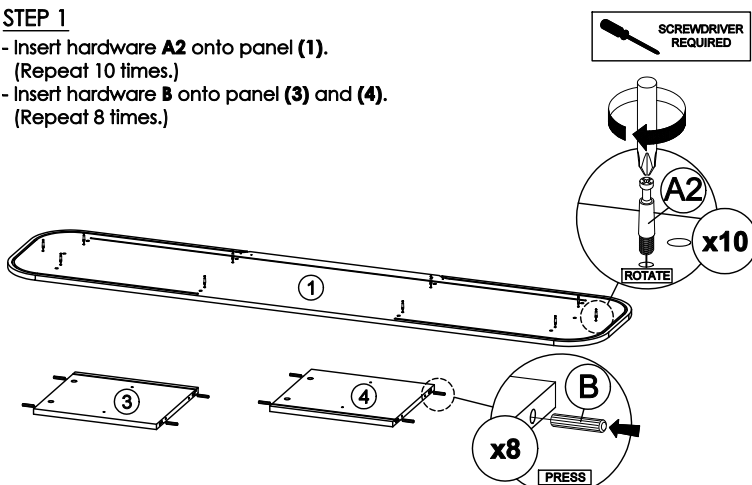


ISO 9001:2015
Reg. No. 00003-1-2017-1-Q008

nuhoom.com

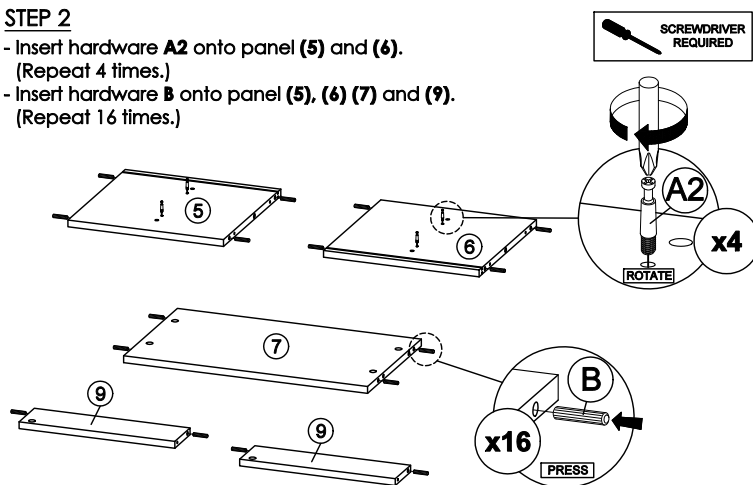
STEP 1

- Insert hardware **A2** onto panel **(1)**.
(Repeat 10 times.)
- Insert hardware **B** onto panel **(3)** and **(4)**.
(Repeat 8 times.)



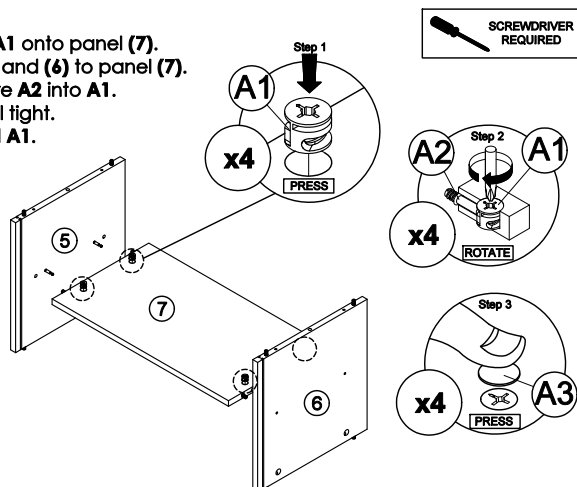
STEP 2

- Insert hardware **A2** onto panel **(5)** and **(6)**.
(Repeat 4 times.)
- Insert hardware **B** onto panel **(5)**, **(6)**, **(7)** and **(9)**.
(Repeat 16 times.)



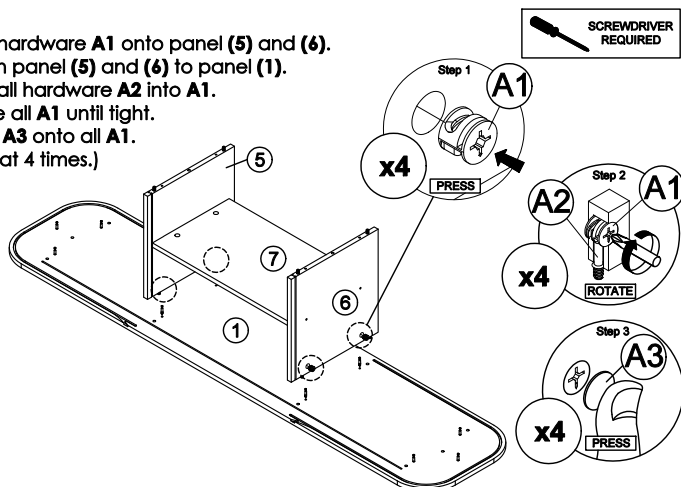
STEP 3

- Insert hardware **A1** onto panel **(7)**.
- Attach panel **(5)** and **(6)** to panel **(7)**.
- Insert all hardware **A2** into **A1**.
- Rotate all **A1** until tight.
- Apply **A3** onto all **A1**.
(Repeat 4 times.)



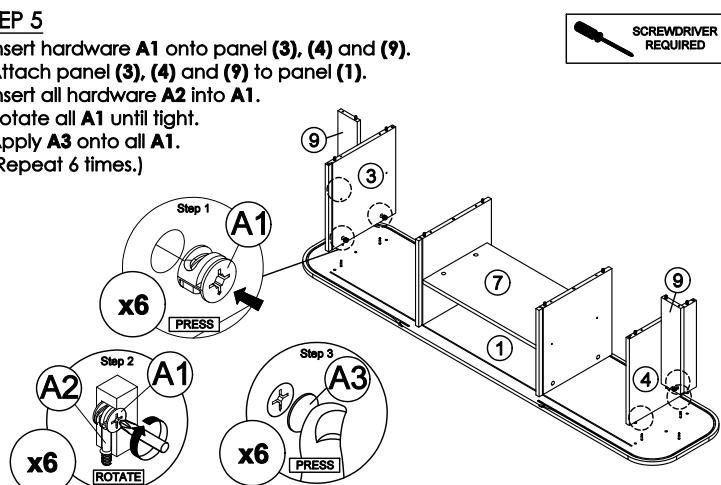
STEP 4

- Insert hardware **A1** onto panel **(5)** and **(6)**.
- Attach panel **(5)** and **(6)** to panel **(1)**.
- Insert all hardware **A2** into **A1**.
- Rotate all **A1** until tight.
- Apply **A3** onto all **A1**.
(Repeat 4 times.)



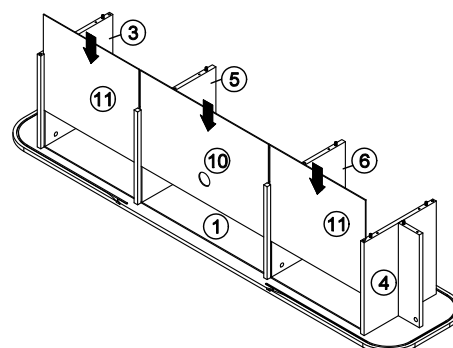
STEP 5

- Insert hardware **A1** onto panel **(3)**, **(4)** and **(9)**.
- Attach panel **(3)**, **(4)** and **(9)** to panel **(1)**.
- Insert all hardware **A2** into **A1**.
- Rotate all **A1** until tight.
- Apply **A3** onto all **A1**.
(Repeat 6 times.)

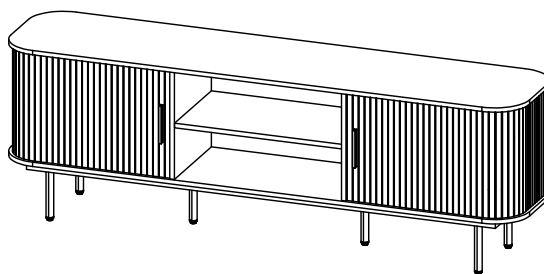


STEP 6

- Insert the panel **(10)** and **(11)** along the slot.
(Repeat 3 times.)



CODING
- 336103

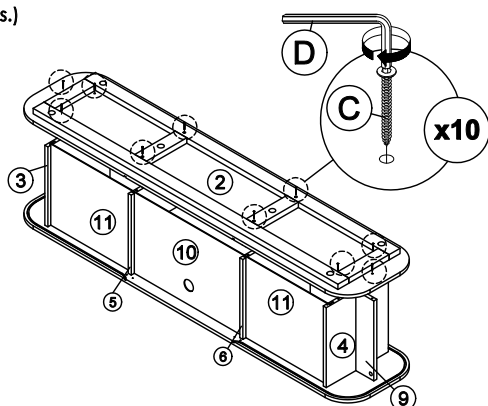


ISO 9001:2015
Reg. No. 00035-1-2017-1-Q008

nuhoom.com

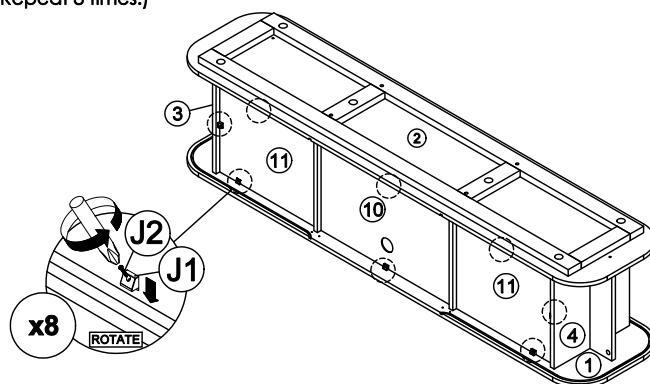
STEP 7

- Connect panel (2) to panel (3), (4), (5), (6) and (9) by using hardware C and D.
(Repeat 10 times.)



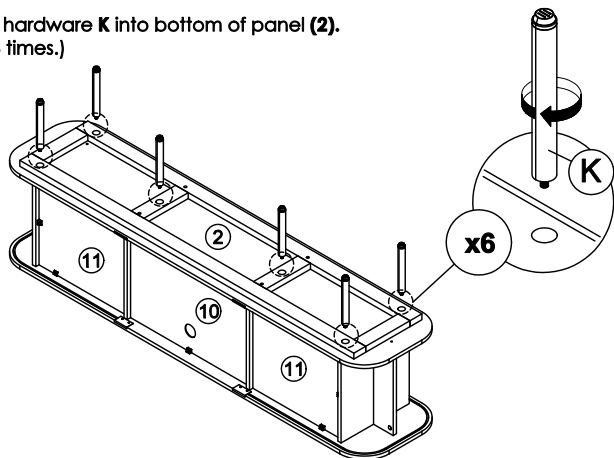
STEP 8

- Insert hardware J1 into slot at panel (1), (2), (3) and (4).
- Assemble hardware J1 by using hardware J2.
(Repeat 8 times.)



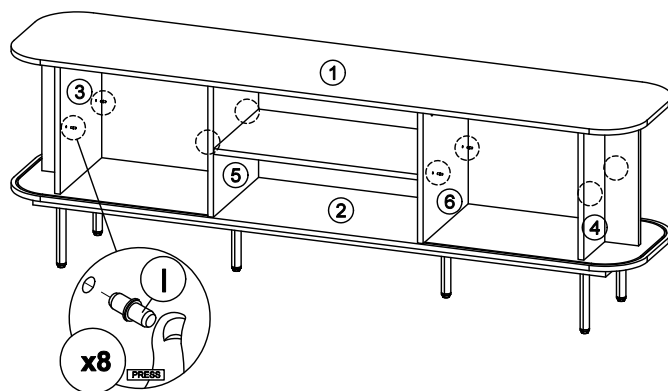
STEP 9

- Assemble hardware K into bottom of panel (2).
(Repeat 6 times.)



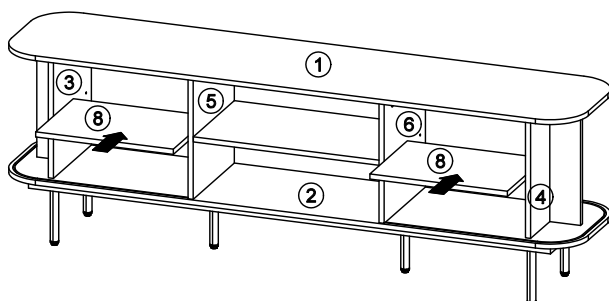
STEP 10

- Insert hardware I into mounting positions on panel (3), (4), (5) and (6) by hand.
(Repeat 8 times.)



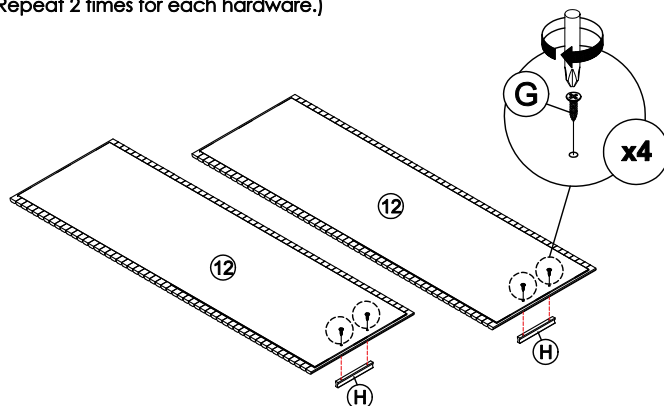
STEP 11

- Assemble the panel (8) into between panel (3) and (5).
- Assemble the panel (8) into between panel (4) and (6).

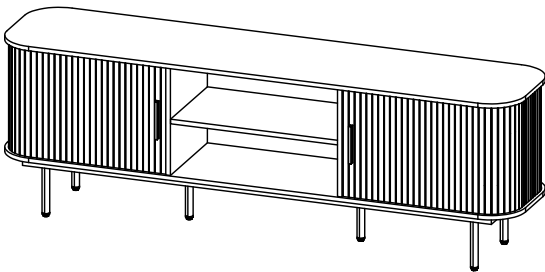


STEP 12

- Fix hardware H onto panel (12) by using hardware G.
(Repeat 2 times for each hardware.)



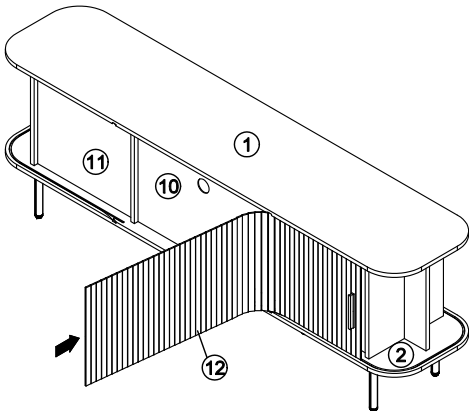
CODING
- 336103



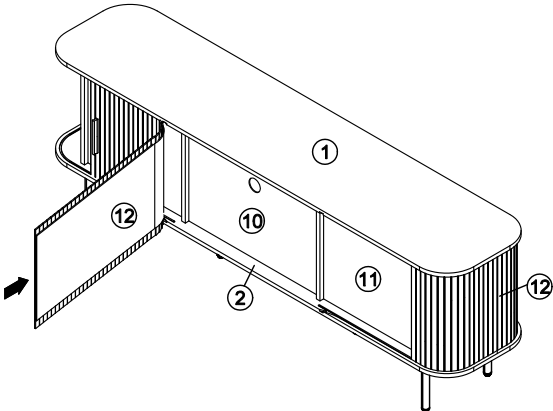
ISO 9001:2015
Reg. No. 00005-1-2017-1-Q008

nuhoom.com

STEP 13
- Insert panel (12) into grooves at panel (1) and (2).



STEP 14
- Insert panel (12) into grooves at panel (1) and (2).



STEP 15
- Assemble the hardware F onto panel (1) and (2)
by using hardware E.
(Repeat 2 times for each hardware.)

