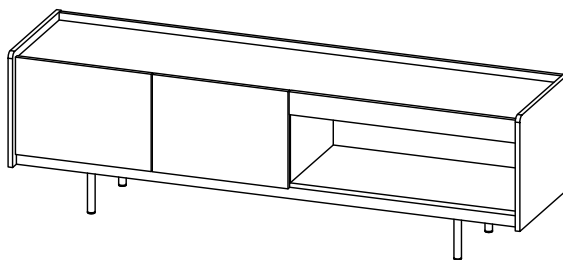


## CODING

- 336050

ISO 9001:2015  
Reg. No. 00905-1-MT-1-QMS

nuhoom.com

Read the instructions carefully. Remove all the wrappings, staples and straps from the carton. Refer to the hardware and furniture part list for guidance. Make sure that you have all the parts before you start assembling. Place all the wooden furniture parts on a clean, flat and soft surface, such as a carpet or rubbermat to prevent scratches.

## CAUTION

KEEP ALL THE PARTS OUT OF CHILDREN'S REACH.

## HARDWARE

HARDWARE			
A	MINI FIX	A1  A2  A3	19 SETS
B	M8 X 30MM WOOD DOWEL		31 PCS
C	M6 X 50MM CSK CAP WOOD SCREW		4 PCS
D	ALLEN KEY M4		1 PC
E	M3.5 X 16MM C.B SCREW		28 PCS
F	M4 X 32MM C.B SCREW		12 PCS
G	JCBC Screw M6 x 20MM		16 PCS
H	JCBC SCREW M6 X 50MM		8 PCS
I	ONE HOLE L BRACKET (2MM)		2 PCS
J	SOFT CLOSING 5/8 HINGES		2 PCS
K	SOFT CLOSING 7/8 HINGES		2 PCS

PART LIST		QTY
1	TOP PANEL	1 PC
2	BOTTOM PANEL	1 PC
3	SIDE PANEL (L)	1 PC
4	SIDE PANEL (R)	1 PC
5	CENTER PANEL (L)	1 PC
6	CENTER PANEL (R)	1 PC
7	MIDDLE PANEL	1 PC
8	BONE PANEL	1 PC
9	BACK PANEL	1 PC
10	DOOR PANEL (L)	1 PC
11	DOOR PANEL (R)	1 PC
12	METAL APRON	1 PC
13	METAL LEG	4 PCS

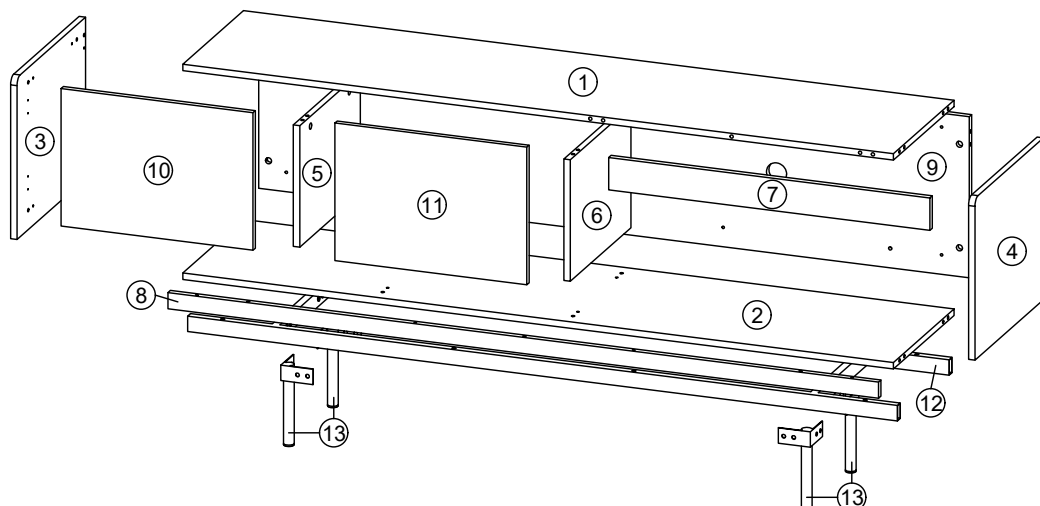
SELF-PREPARED TOOLS: Tools below are NOT included in package.



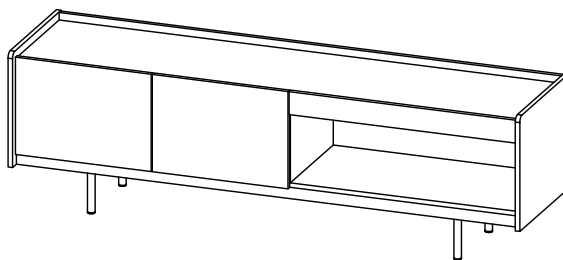
SCREWDRIVER



HAMMER



CODING  
- 336050

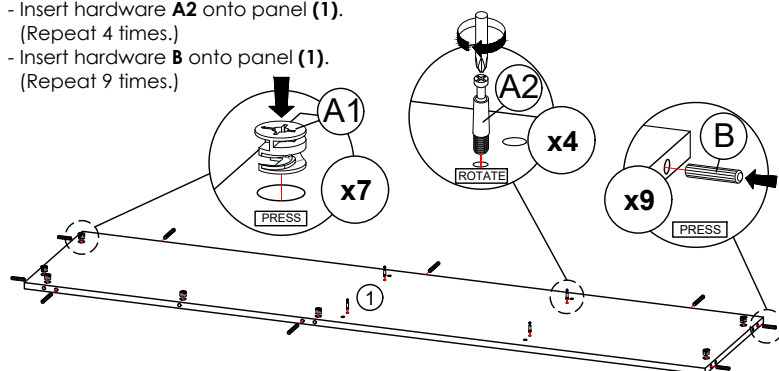


ISO 9001:2015  
Reg. No. 00905-1-MIT-1-QMS

nuhoom.com

## STEP 1

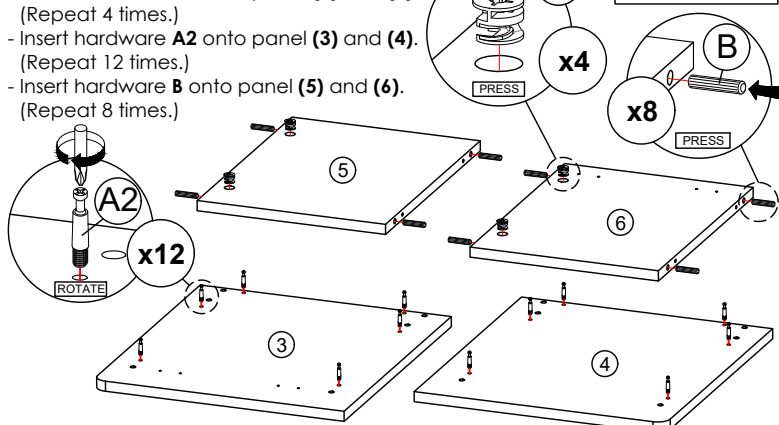
- Insert hardware **A1** onto panel (1).  
(Repeat 7 times.)
- Insert hardware **A2** onto panel (1).  
(Repeat 4 times.)
- Insert hardware **B** onto panel (1).  
(Repeat 9 times.)



\* Ensure the arrows on hardware **A1** point towards mounting positions.

## STEP 2

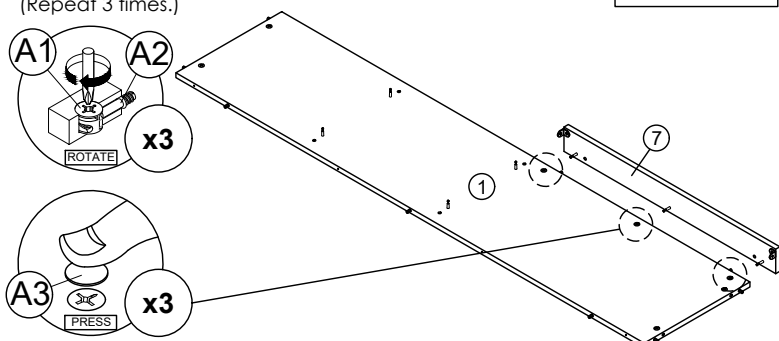
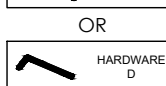
- Insert hardware **A1** onto panel (5) and (6).  
(Repeat 4 times.)
- Insert hardware **A2** onto panel (3) and (4).  
(Repeat 12 times.)
- Insert hardware **B** onto panel (5) and (6).  
(Repeat 8 times.)



\* Ensure the arrows on hardware **A1** point towards mounting positions.

## STEP 3

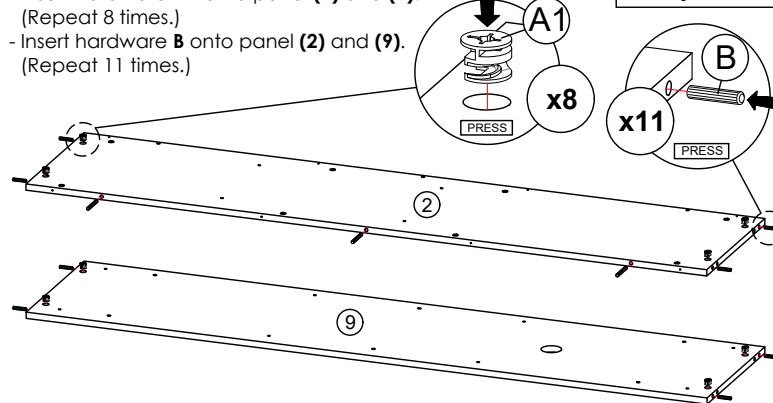
- Attach panel (7) to panel (1).
- Insert all hardware **A2** into **A1**.
- Rotate all **A1** until tight.
- Apply **A3** onto all **A1**.  
(Repeat 3 times.)



\* In this step hardware **A1**, **A2** and **B** are pre-inserted.

## STEP 4

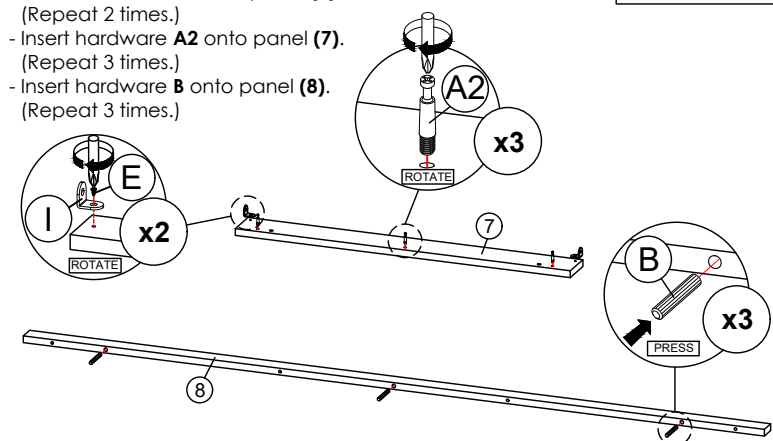
- Insert hardware **A1** onto panel (2) and (9).  
(Repeat 8 times.)
- Insert hardware **B** onto panel (2) and (9).  
(Repeat 11 times.)



\* Ensure the arrows on hardware **A1** point towards mounting positions.

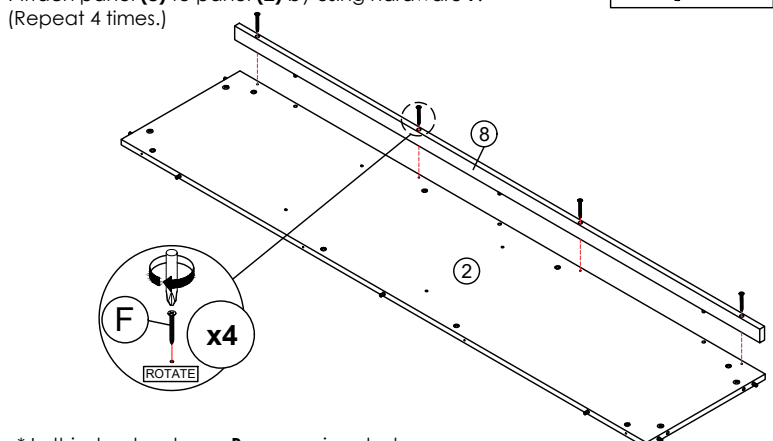
## STEP 5

- Assemble hardware **I** to panel (7) with hardware **E**.  
(Repeat 2 times.)
- Insert hardware **A2** onto panel (7).  
(Repeat 3 times.)
- Insert hardware **B** onto panel (8).  
(Repeat 3 times.)



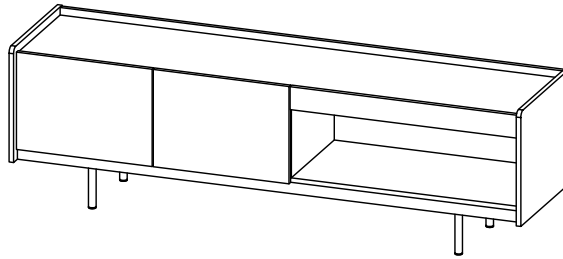
## STEP 6

- Attach panel (8) to panel (2) by using hardware **F**.  
(Repeat 4 times.)



\* In this step hardware **B** are pre-inserted.

CODING  
- 336050

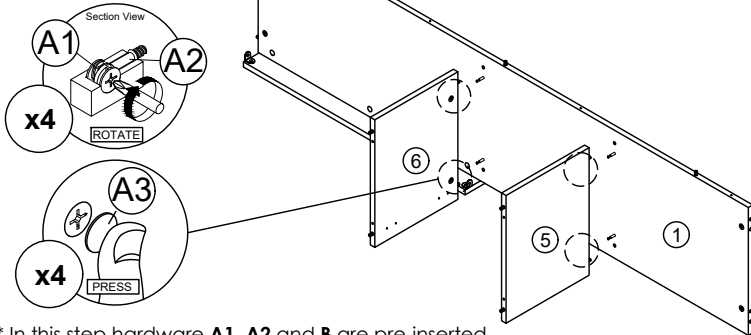
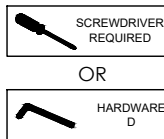


ISO 9001:2015  
Reg. No. 00905-1-MT-1-QMS

nuhoom.com

## STEP 7

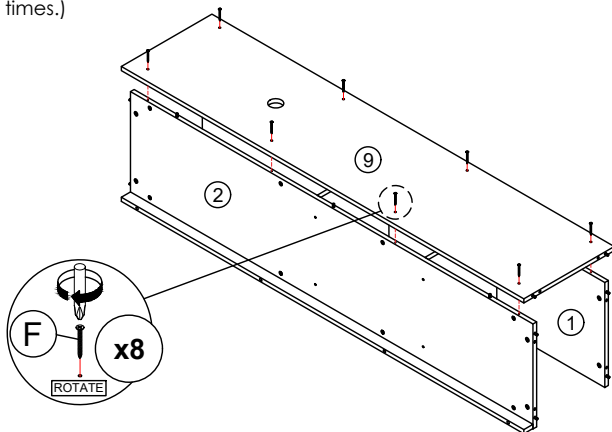
- Attach panel (5) and (6) to panel (1).
  - Insert all hardware A2 into A1.
  - Rotate all A1 until tight.
  - Apply A3 onto all A1.
- (Repeat 4 times.)



\* In this step hardware A1, A2 and B are pre-inserted.

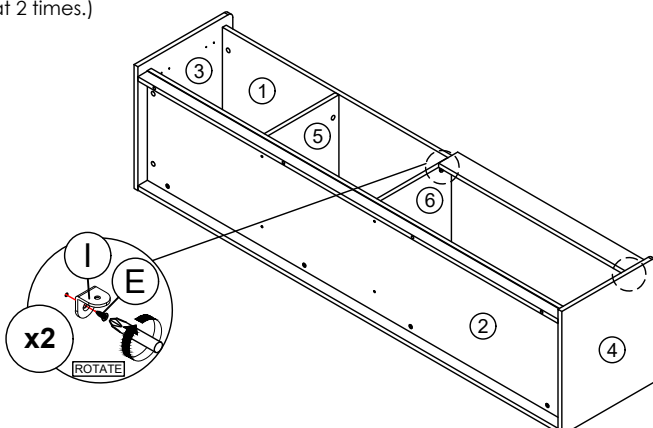
## STEP 9

- Attach panel (9) to panel (1) and (2) by using hardware F.
- (Repeat 8 times.)



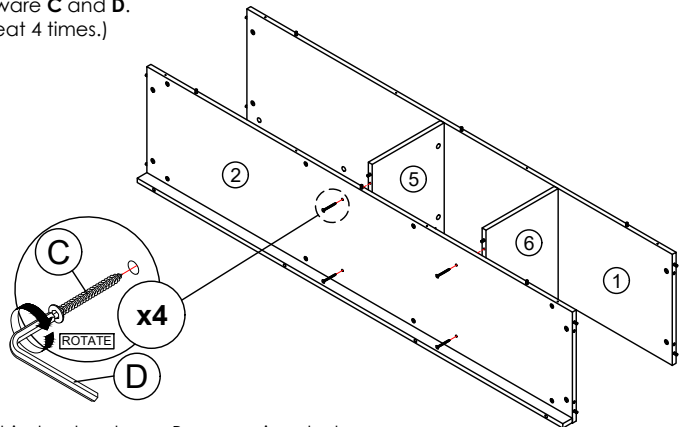
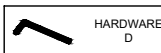
## STEP 11

- Assemble hardware I to panel (4) and (6) with hardware E.
- (Repeat 2 times.)



## STEP 8

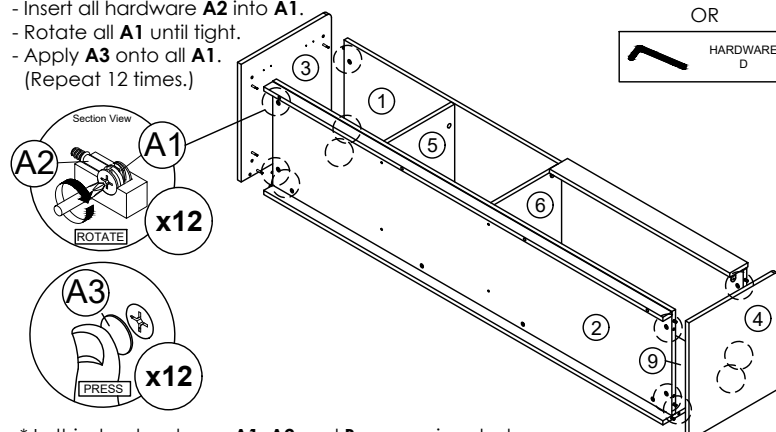
- Connect panel (2) to panel (5) and (6) by using hardware C and D.
- (Repeat 4 times.)



\* In this step hardware B are pre-inserted.

## STEP 10

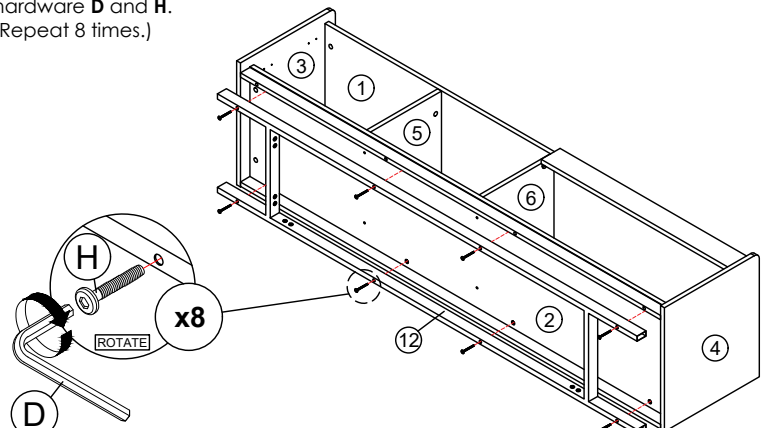
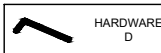
- Attach panel (3) and (4) to panel (1), (2) and (9).
  - Insert all hardware A2 into A1.
  - Rotate all A1 until tight.
  - Apply A3 onto all A1.
- (Repeat 12 times.)



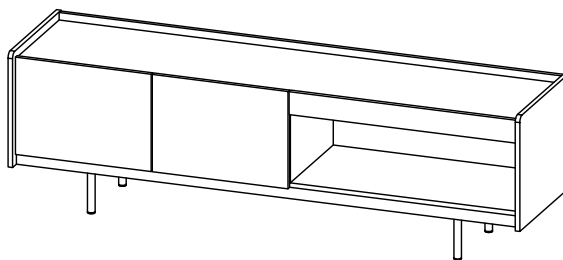
\* In this step hardware A1, A2 and B are pre-inserted.

## STEP 12

- Connect Metal Apron (12) to panel (2) by using hardware D and H.
- (Repeat 8 times.)



CODING  
- 336050

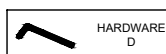


ISO 9001:2015  
Reg. No. 009-05-1-MT-1-QMS

nuhoom.com

## STEP 13

Connect Metal Leg (13) to Metal Apron (12) by using hardware D and G.  
(Repeat 16 times.)



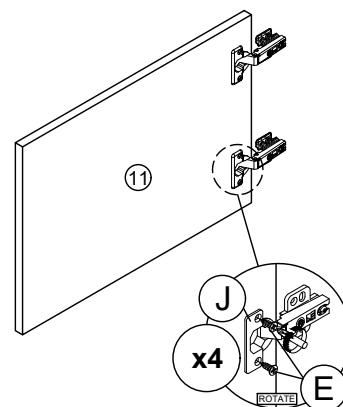
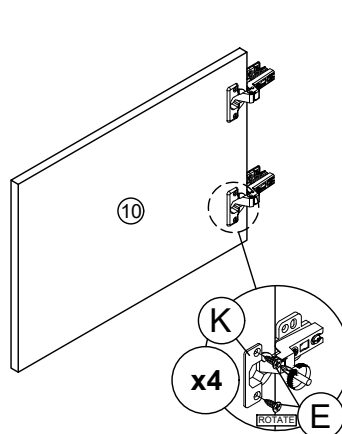
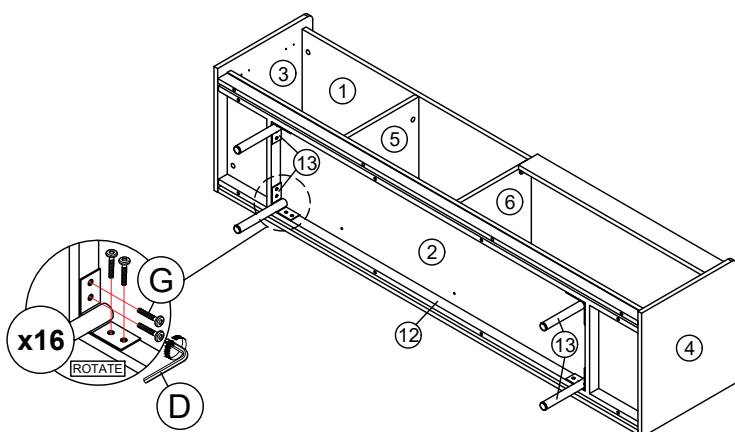
HARDWARE  
D

## STEP 14

Fix hardware J onto panel (11) and hardware K onto panel (10) by using hardware E.  
(Repeat 2 times for each hardware.)



SCREWDRIVER  
REQUIRED



## STEP 15

- Fix hardware K into panel (3) by using hardware E.  
(Repeat 4 times for each hardware.)  
- Tighten or loosen the screw to adjust position of panel (10).  
(Do only when needed.)



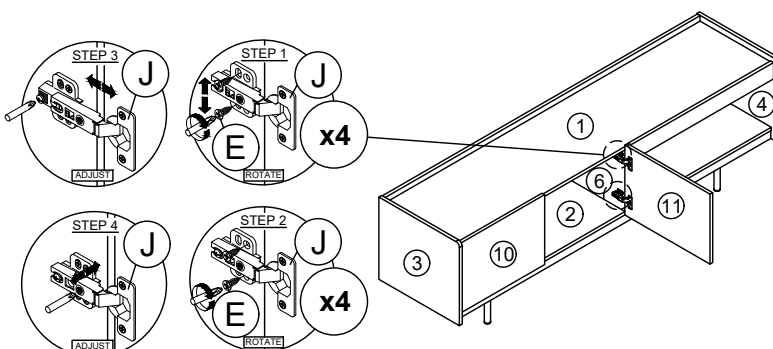
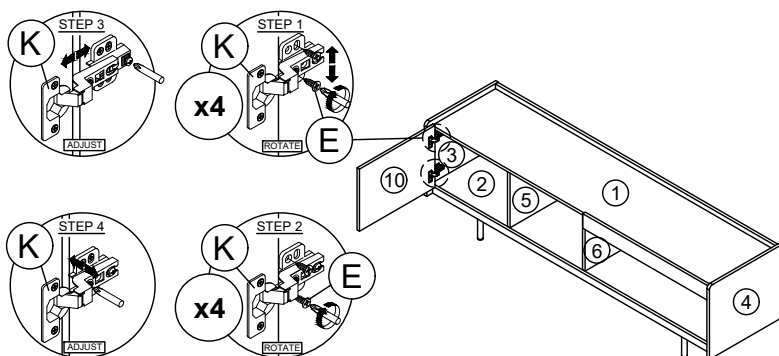
SCREWDRIVER  
REQUIRED

## STEP 16

- Fix hardware J into panel (6) by using hardware E.  
(Repeat 4 times for each hardware.)  
- Tighten or loosen the screw to adjust position of panel (11).  
(Do only when needed.)



SCREWDRIVER  
REQUIRED



\* In this step hardware K have been assembled in panel (10).

\* In this step hardware J have been assembled in panel (11).