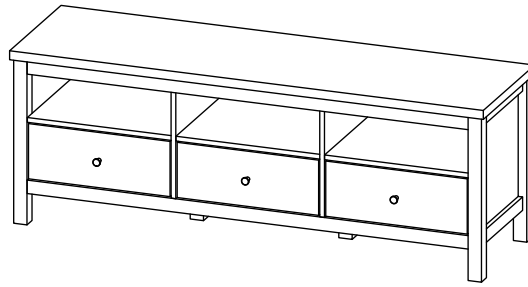


**CODING**  
- 336048



ISO 9001:2015  
Reg. No. 100005-1-001-1-Q008

nuhoom.com

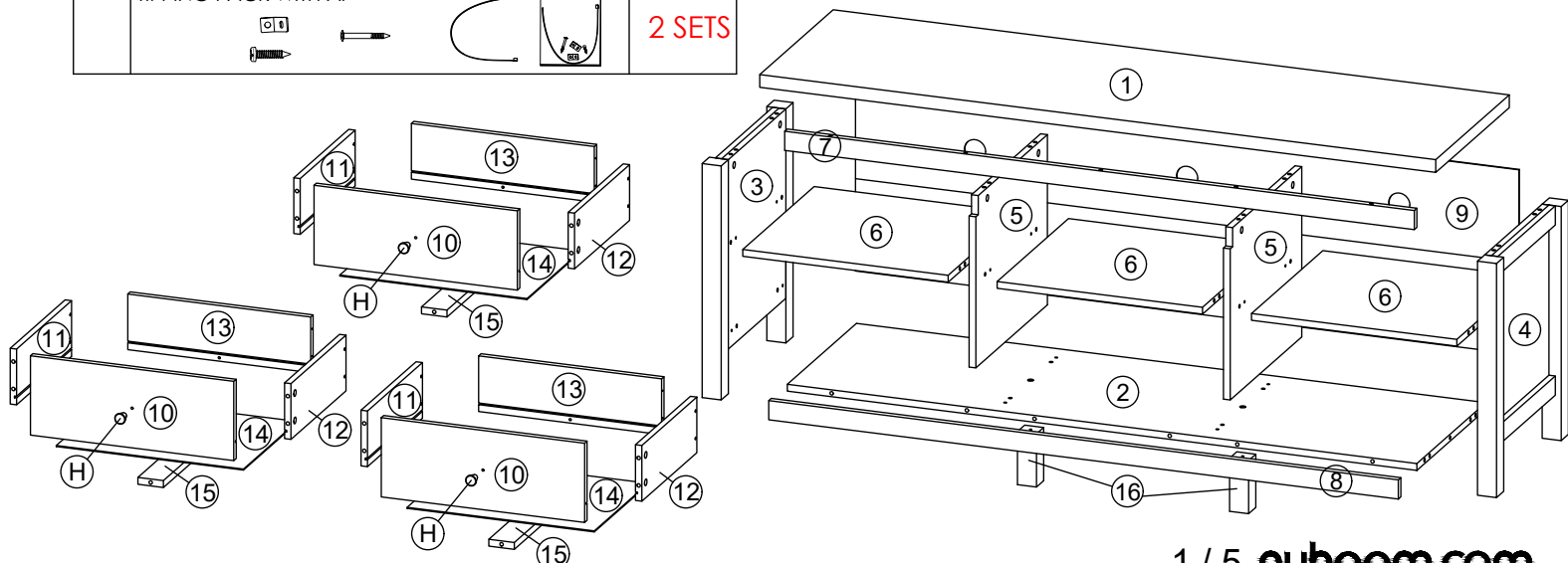
Read the instructions carefully. Remove all the wrappings, staples and straps from the carton. Refer to the hardware and furniture part list for guidance. Make sure that you have all the parts before you start assembling. Place all the wooden furniture parts on a clean, flat and soft surface, such as a carpet or rubbermat to prevent scratches.

**CAUTION**  
KEEP ALL THE PARTS OUT OF CHILDREN'S REACH.

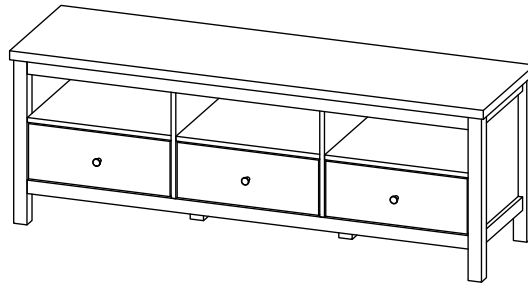
HARDWARE			
A	MINI FIX	A1  A2  A3	50 SETS
B	M8 X 30MM WOOD DOWEL		32 PCS
C	M6 X 50MM CSK CAP WOOD SCREW		4 PCS
D	ALLEN KEY M4		1 PC
E	M4 X 30MM C.B SCREW		3 PCS
F	M4 X 38MM C.B SCREW		12 PCS
G	M3.5 X 16MM C.B SCREW		36 PCS
H	311 KNOD		3 PCS
I	5/8 PVC NAIL LEG		4 PCS
J	5/8 NAIL		26 PCS
K	14" DRAWER SLIDE	K1 (L/R)  K2 (L/R)	3 SETS
TIPPING PACK WITH A1			2 SETS

PART LIST		QTY
1	TOP PANEL	1 PC
2	BOTTOM PANEL	1 PC
3	SIDE PANEL (L)	1 PC
4	SIDE PANEL (R)	1 PC
5	CENTER PANEL	2 PCS
6	MIDDLE PANEL	3 PCS
7	FRONT RAIL TOP	1 PC
8	FRONT RAIL BOTTOM	1 PC
9	BACK PANEL	1 PC
10	DRAWER FRONT	3 PCS
11	DRAWER SIDE (L)	3 PCS
12	DRAWER SIDE (R)	3 PCS
13	DRAWER BACK	3 PCS
14	DRAWER BOTTOM	3 PCS
15	DRAWER BONE	3 PCS
16	CENTER SUPPORT LEG	2 PCS

SELF-PREPARED TOOLS: Tools below are NOT included in package.	
SCREWDRIVER	HAMMER



**CODING**  
- 336048

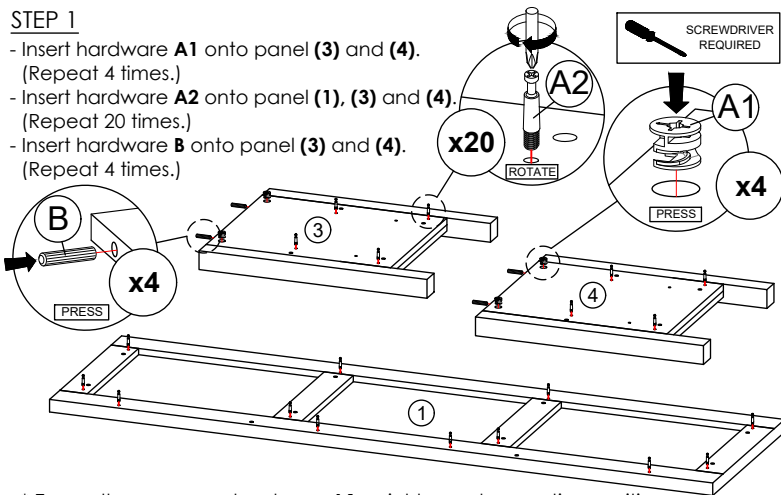


ISO 9001:2015  
Reg. No. 10000-1-2017-1-GB

nuhoom.com

**STEP 1**

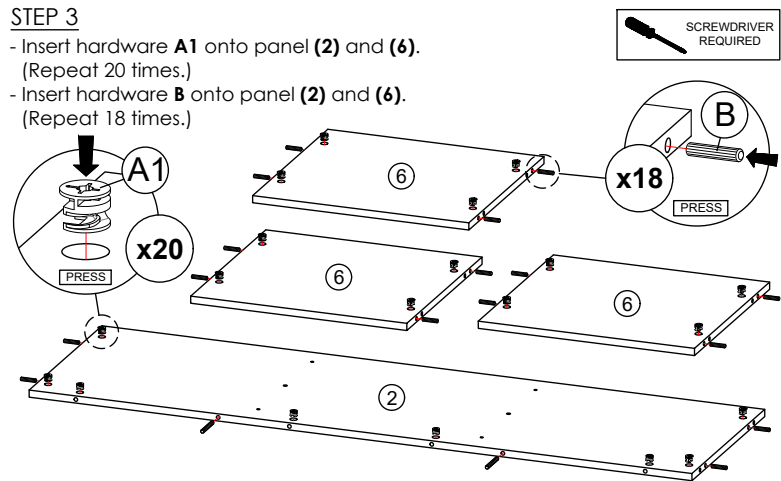
- Insert hardware **A1** onto panel (3) and (4). (Repeat 4 times.)
- Insert hardware **A2** onto panel (1), (3) and (4). (Repeat 20 times.)
- Insert hardware **B** onto panel (3) and (4). (Repeat 4 times.)



\* Ensure the arrows on hardware **A1** point towards mounting positions.

**STEP 3**

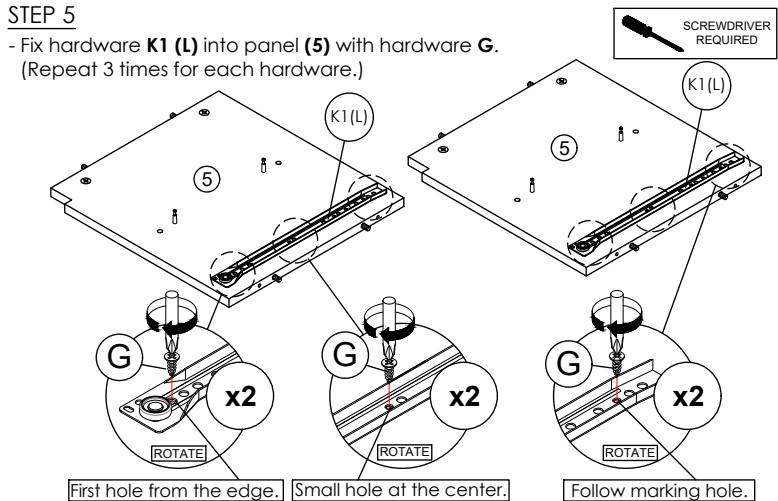
- Insert hardware **A1** onto panel (2) and (6). (Repeat 20 times.)
- Insert hardware **B** onto panel (2) and (6). (Repeat 18 times.)



\* Ensure the arrows on hardware **A1** point towards mounting positions.

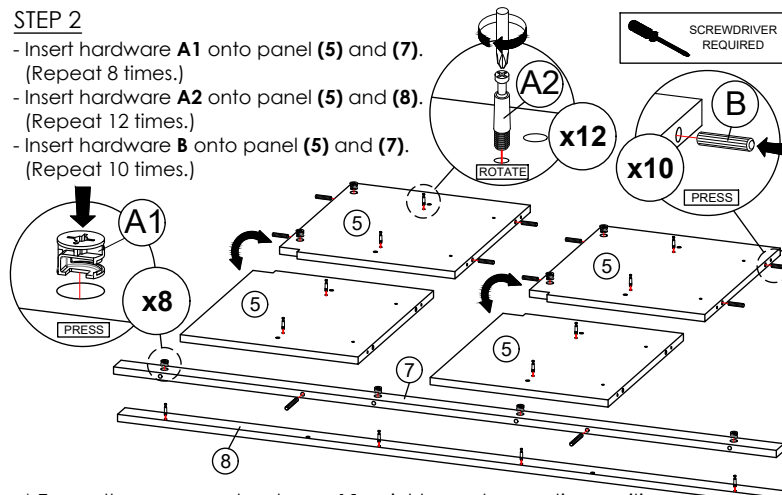
**STEP 5**

- Fix hardware **K1 (L)** into panel (5) with hardware **G**. (Repeat 3 times for each hardware.)



**STEP 2**

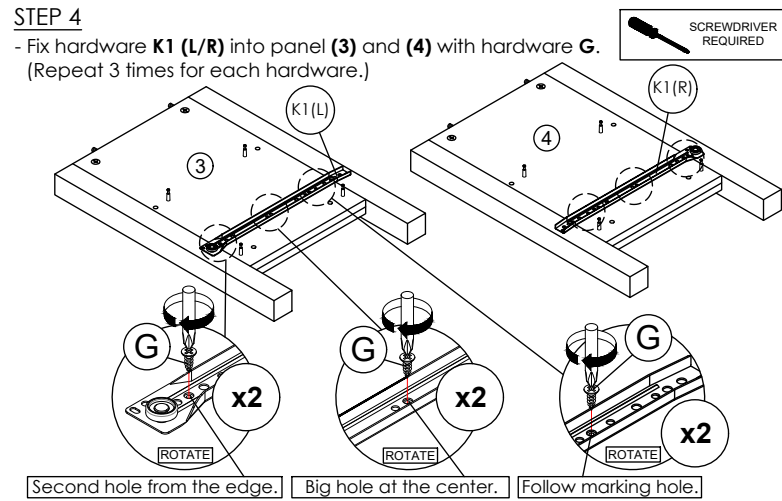
- Insert hardware **A1** onto panel (5) and (7). (Repeat 8 times.)
- Insert hardware **A2** onto panel (5) and (8). (Repeat 12 times.)
- Insert hardware **B** onto panel (5) and (7). (Repeat 10 times.)



\* Ensure the arrows on hardware **A1** point towards mounting positions.

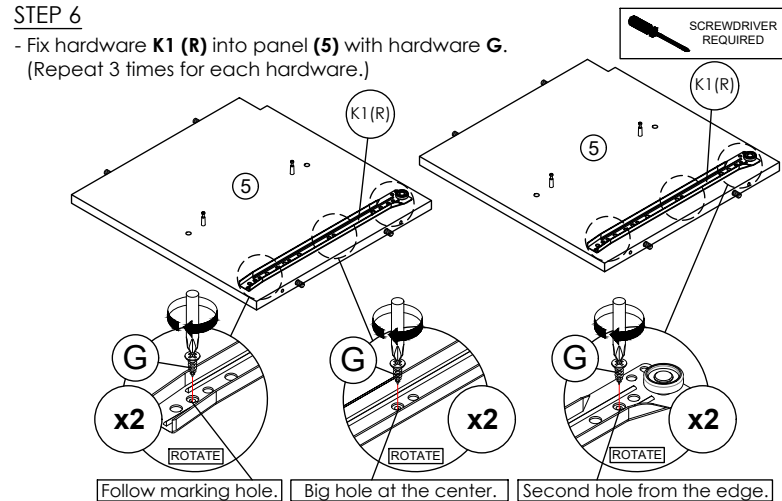
**STEP 4**

- Fix hardware **K1 (L/R)** into panel (3) and (4) with hardware **G**. (Repeat 3 times for each hardware.)

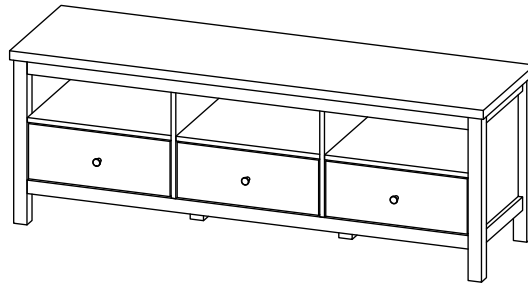


**STEP 6**

- Fix hardware **K1 (R)** into panel (5) with hardware **G**. (Repeat 3 times for each hardware.)



**CODING**  
- 336048

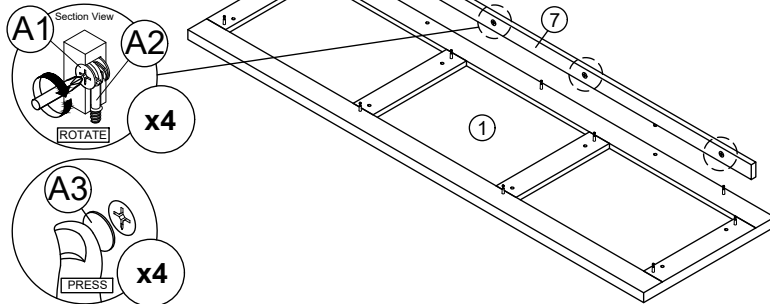
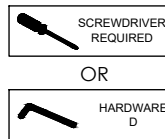


ISO 9001:2015  
Reg. No. 100005-1-2017-1-GB

nuhoom.com

**STEP 7**

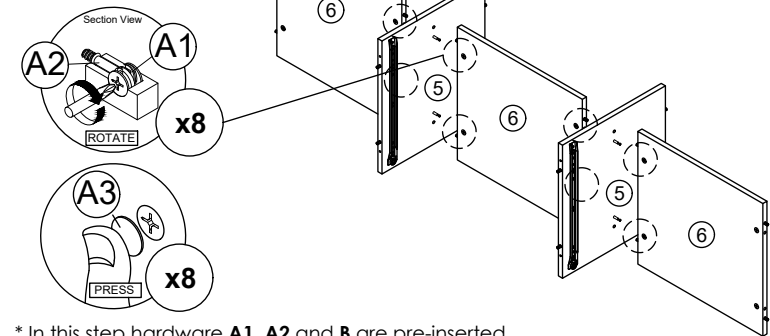
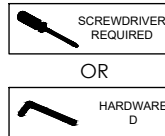
- Attach panel (7) to panel (1).
- Insert all hardware A2 into A1.
- Rotate all A1 until tight.
- Apply A3 onto all A1.
- (Repeat 4 times.)



\* In this step hardware A1, A2 and B are pre-inserted.

**STEP 9**

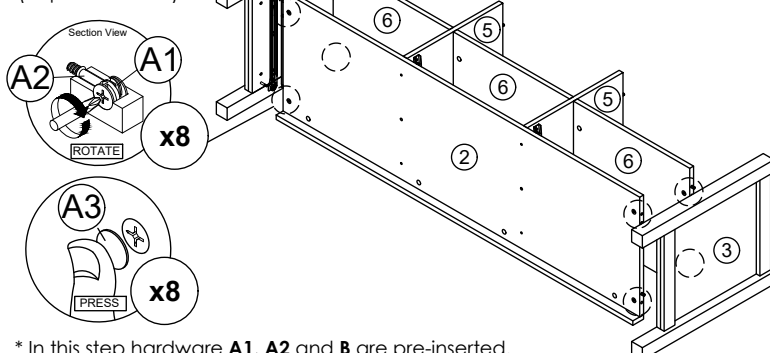
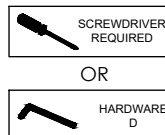
- Attach panel (6) to panel (5).
- Insert all hardware A2 into A1.
- Rotate all A1 until tight.
- Apply A3 onto all A1.
- (Repeat 8 times.)



\* In this step hardware A1, A2 and B are pre-inserted.

**STEP 11**

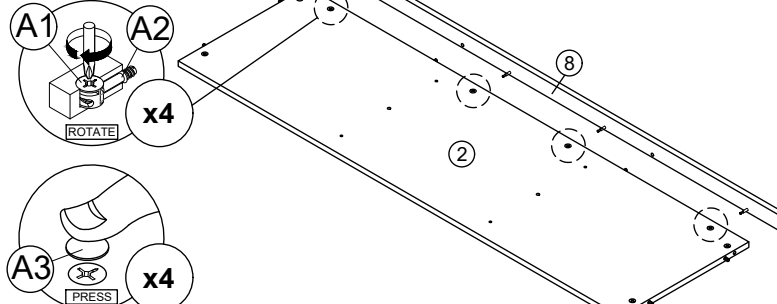
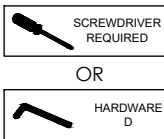
- Attach panel (3) and (4) to panel (2) and (6).
- Insert all hardware A2 into A1.
- Rotate all A1 until tight.
- Apply A3 onto all A1.
- (Repeat 8 times.)



\* In this step hardware A1, A2 and B are pre-inserted.

**STEP 8**

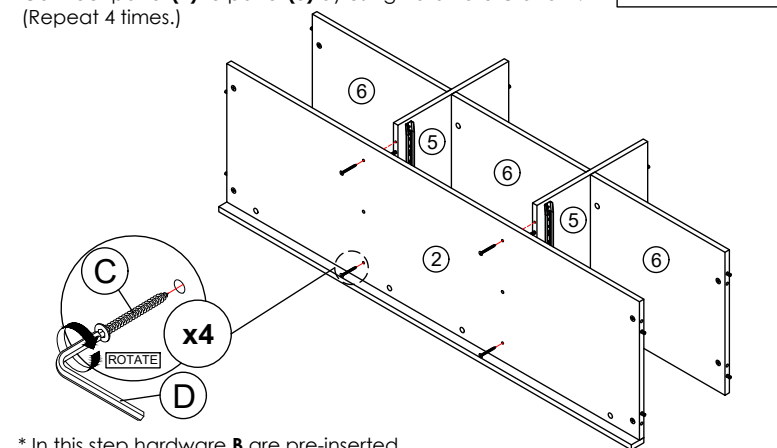
- Attach panel (8) to panel (2).
- Insert all hardware A2 into A1.
- Rotate all A1 until tight.
- Apply A3 onto all A1.
- (Repeat 4 times.)



\* In this step hardware A1, A2 and B are pre-inserted.

**STEP 10**

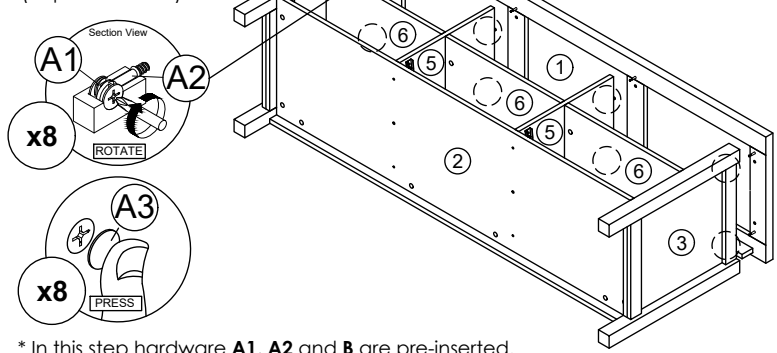
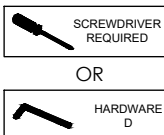
- Connect panel (2) to panel (5) by using hardware C and D.
- (Repeat 4 times.)



\* In this step hardware B are pre-inserted.

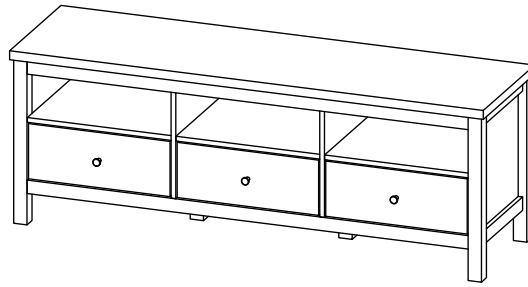
**STEP 12**

- Attach panel (1) to panel (3), (4) and (5).
- Insert all hardware A2 into A1.
- Rotate all A1 until tight.
- Apply A3 onto all A1.
- (Repeat 8 times.)



\* In this step hardware A1, A2 and B are pre-inserted.

**CODING**  
- 336048

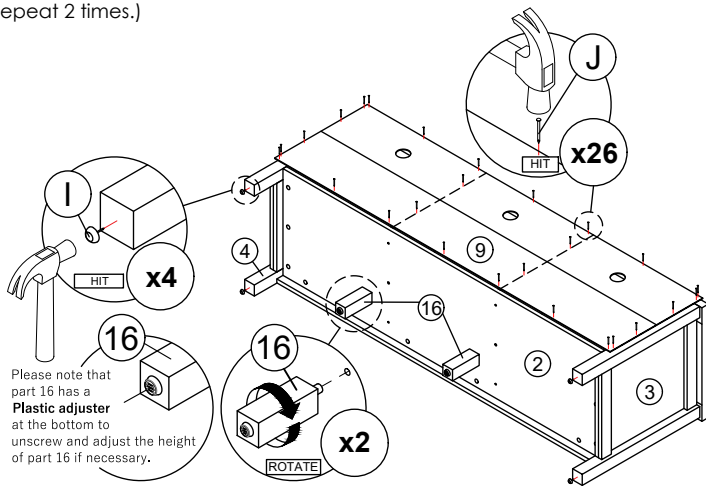
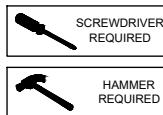


ISO 9001:2015  
Reg. No. 100005-1-001-1-000

nuhoom.com

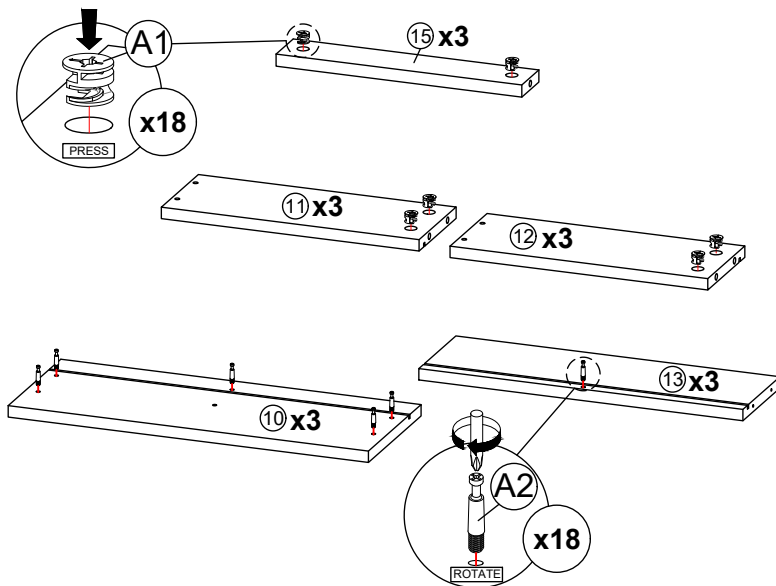
### STEP 13

- Assemble panel (9) to entire body with hardware J. (Repeat 26 times.)
- Hit hardware I into bottom of panel (3) and (4). (Repeat 4 times.)
- Assemble part 16 into panel (2). (Repeat 2 times.)



### STEP 14

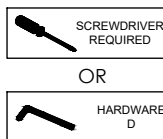
- Insert hardware A1 onto panel (11), (12) and (15). (Repeat 18 times.)
- Insert hardware A2 onto panel (10) and (13). (Repeat 18 times.)



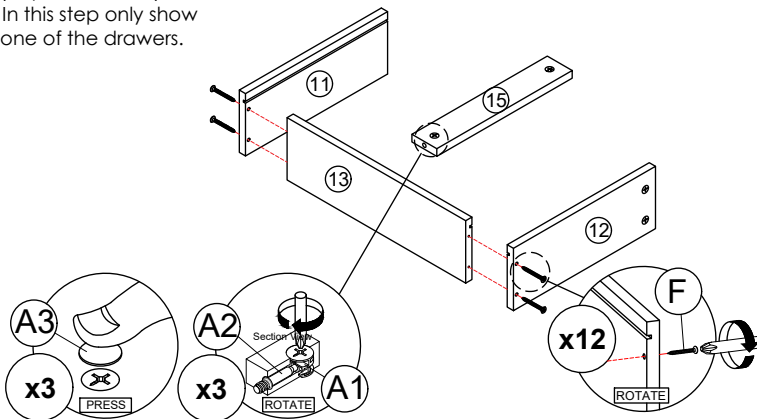
\* Ensure the arrows on hardware A1 point towards mounting positions.

### STEP 15

- Assemble panel (11) and (12) to panel (13) by using hardware F. (Repeat 12 times.)
- Attach panel (15) to panel (13).
- Insert all hardware A2 into A1.
- Rotate all A1 until tight.
- Apply A3 onto all A1. (Repeat 3 times.)

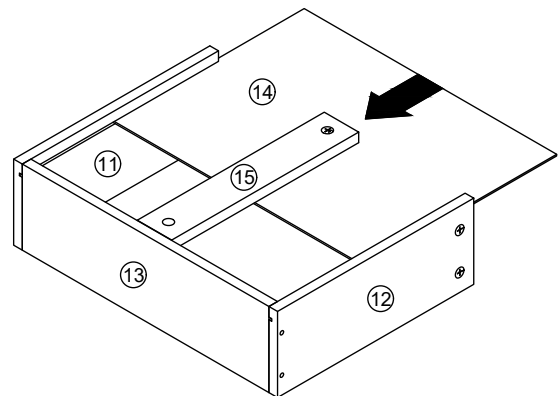


\* In this step only show one of the drawers.



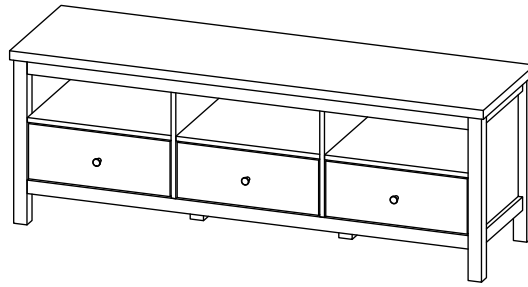
### STEP 16

- Insert panel (14) along the slot. (Repeat 3 times.)
- \* In this step only show one of the drawers.



\* In this step hardware A1, A2 and B are pre-inserted.

**CODING**  
- 336048



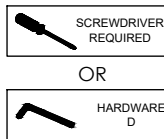
ISO 9001:2015  
Reg. No. 100005-1-2017-1-QMS

nuhoom.com

**STEP 17**

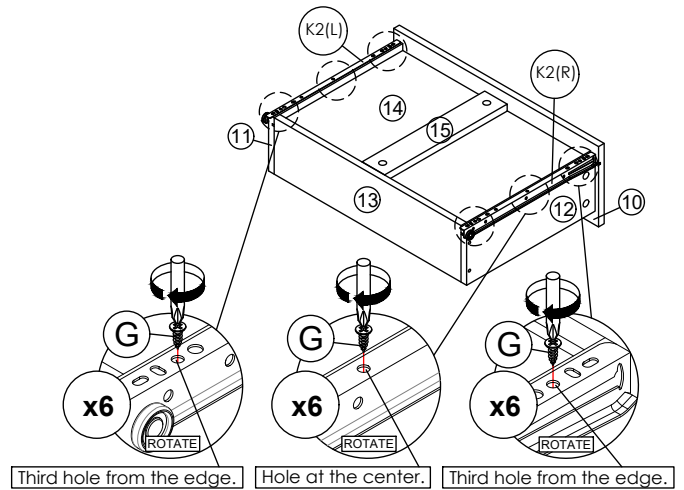
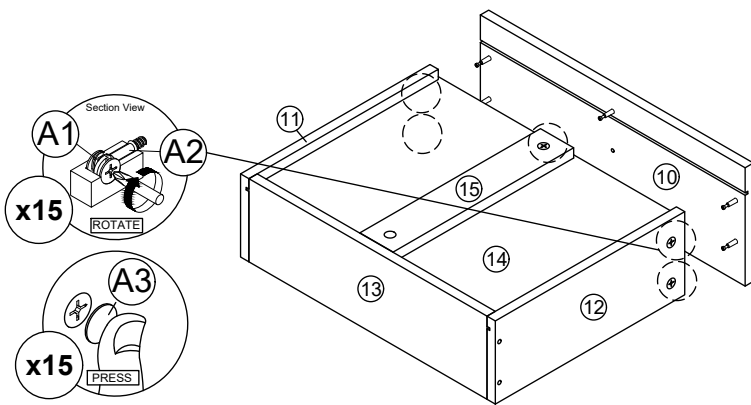
- Attach panel (10) to panel (11), (12) and (15).
- Insert all hardware A2 into A1.
- Rotate all A1 until tight.
- Apply A3 onto all A1.
- (Repeat 15 times.)

\* In this step only show one of the drawers.



**STEP 18**

- Assemble hardware K2 (L/R) to panel (11) and (12) by using hardware G.
- (Repeat 3 times for each hardware.)
- \* In this step only show one of the drawers.



\* In this step hardware A1, A2 and B are pre-inserted.

**STEP 19**

- Fix hardware H onto panel (10) by using hardware E.
- (Repeat 3 times.)

\* In this step only show one of the drawers.



\*Hardware K2 (L/R) shall be leaning against panel (10) when assembling.

**STEP 20**

- Put all the drawer in place along the drawer slides.

