

CODING
-336024



ISO 9001:2015
Reg. No. 000435-1-MY-1-QMS

nuhoom.com

Read the instructions carefully. Remove all the wrappings , staples and straps from the carton. Refer to the hardware and furniture part list for guidance. Make sure that you have all the parts before you start assembling. Place all the wooden furniture parts on a clean, flat and soft surface, such as a carpet or rubbermat to prevent scratches.

CAUTION
KEEP ALL THE PARTS OUT OF CHILDREN'S REACH.

ITEM	PHOTO	HARDWARE NAME	QTY
(A)		MINIFIX M5X24MM	8 PCS
(B)		MINIFIX CASING	8 PCS
(C)		WOOD DOWEL M8X30MM	4 PCS
(D)		SCREW M6X50MM	8 PCS
(E)		SCREW M3.5X16MM	4 PCS
(F)		STOPPER INSERT	3 PCS
(G)		HYDRAULIC HINGES 7/8" + SCREW M3.5X16MM	6 PCS + 36PCS
(H)		PVC LEG + SCREW M3.5X16MM	6 PCS + 24PCS
(I)		ALLEN KEY	1 PC

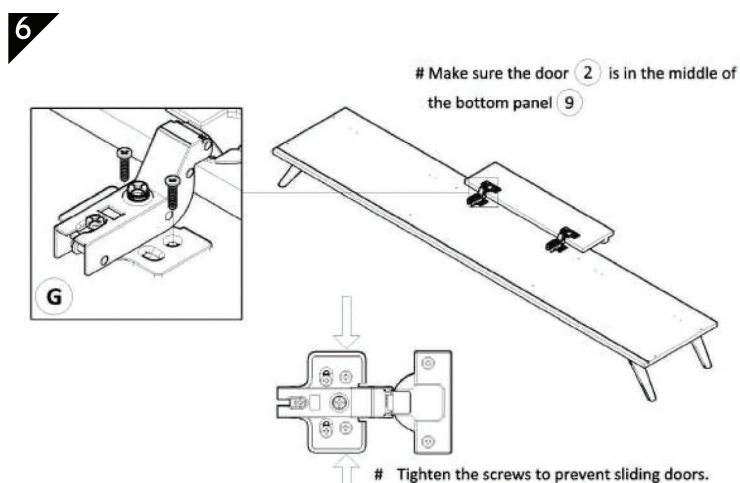
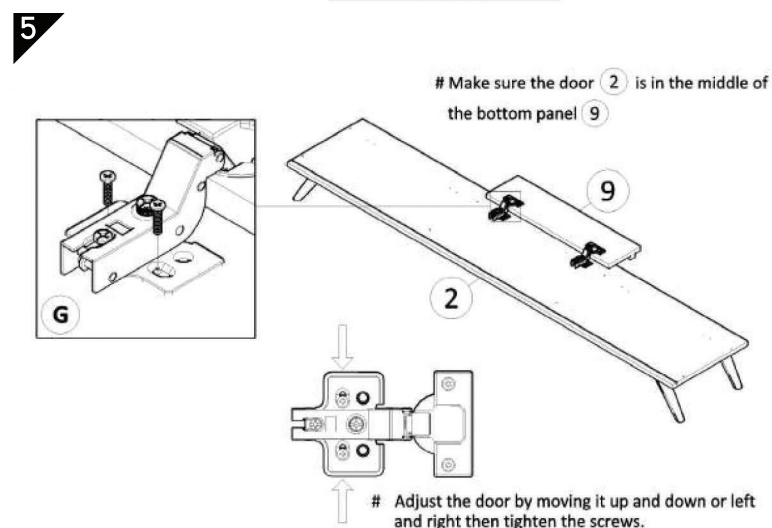
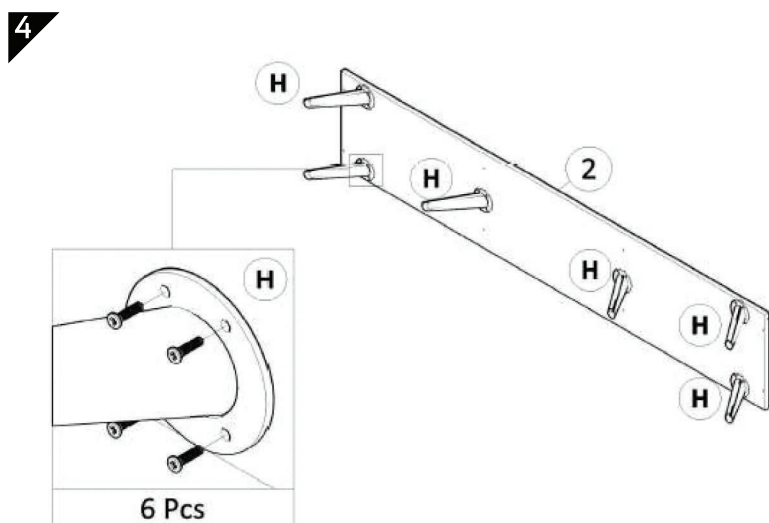
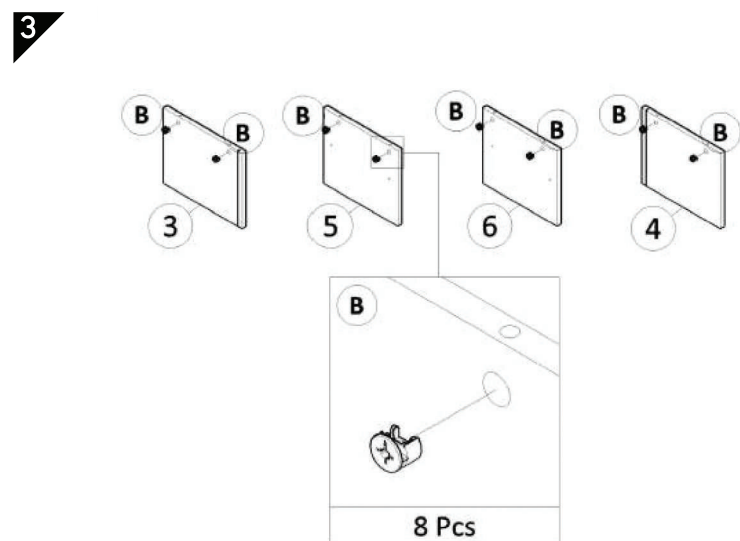
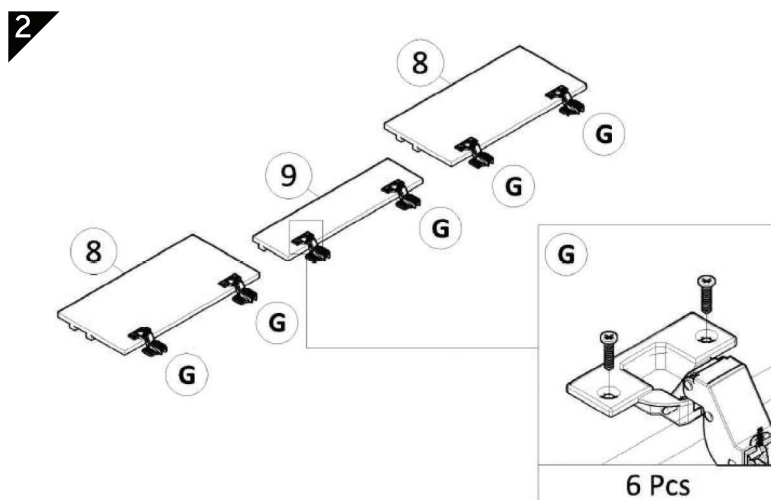
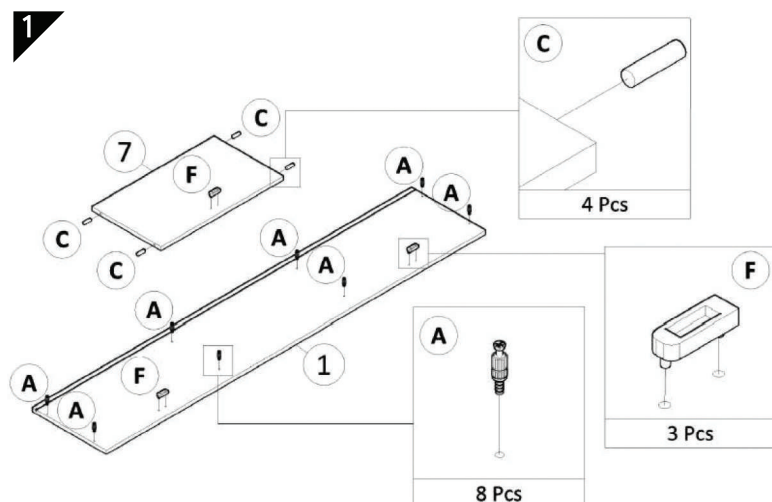
ITEM	PHOTO	PARTS NAME	QTY
(1)		TOP PANEL	1 PC
(2)		BOTTOM PANEL	1 PC
(3)		SIDE PANEL LEFT	1 PC
(4)		SIDE PANEL RIGHT	1 PC
(5)		CENTER PANEL LEFT	1 PC
(6)		CENTER PANEL RIGHT	1 PC
(7)		SHELF PANEL	1 PC
(8)		BIG DOOR PANEL	2 PCS
(9)		SMALL DOOR PANEL	1 PC
(10)		BACK MDF BOARD	1 PC

CODING
-336024



ISO 9001:2015
Reg. No. 000435-1-MY-1-QMS

nuhoom.com

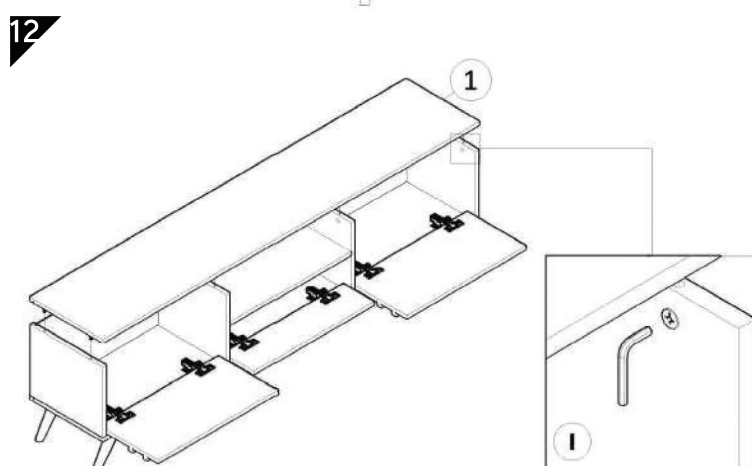
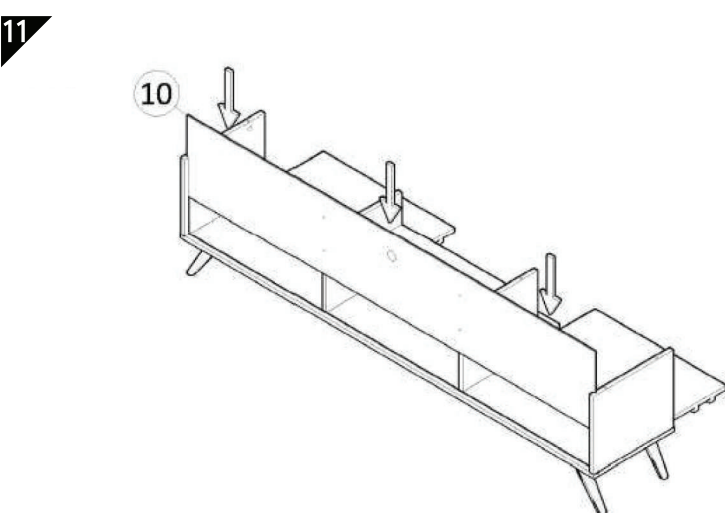
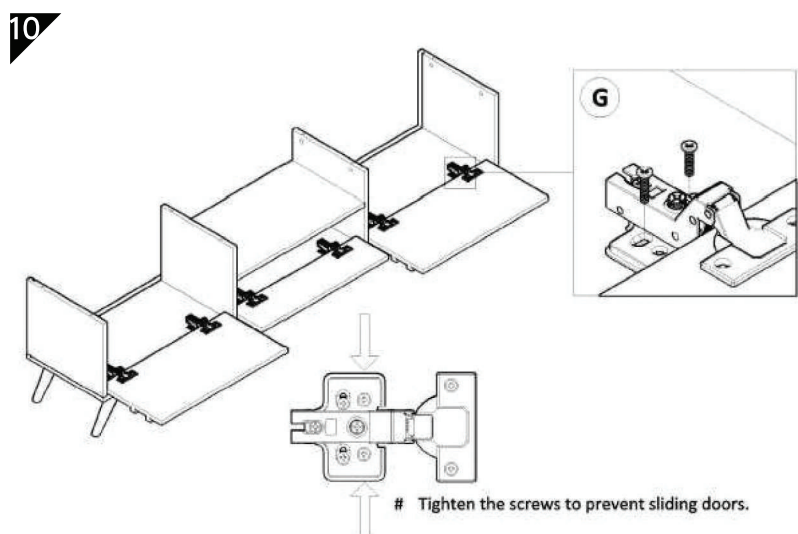
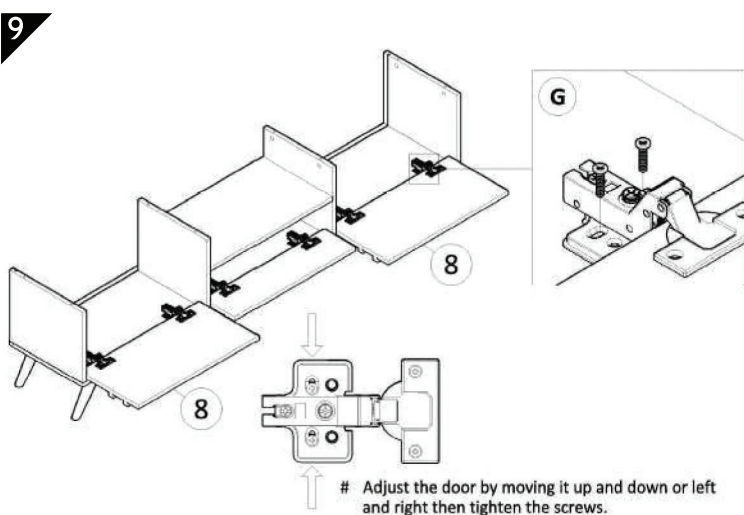
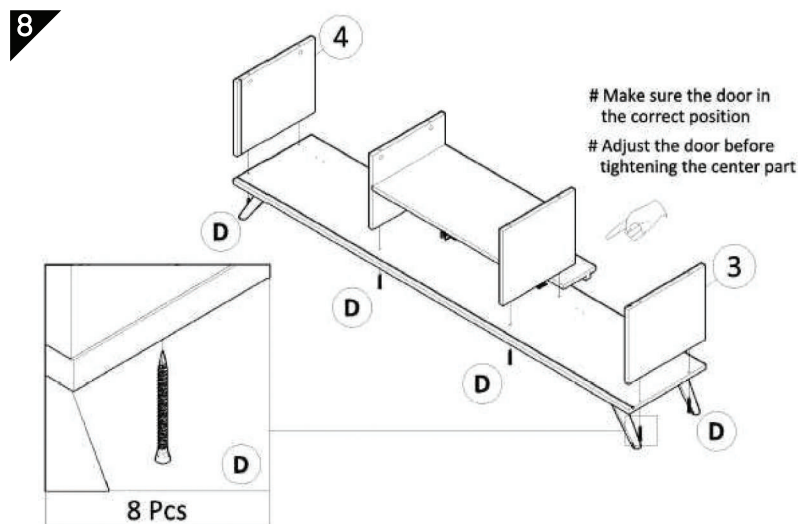
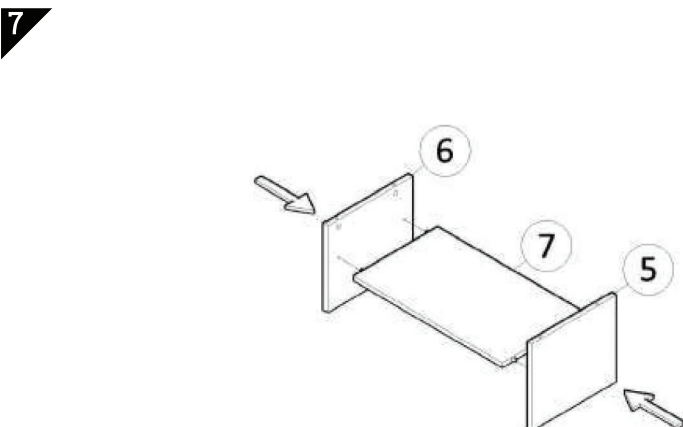


CODING
-336024



ISO 9001:2015
Reg. No. 000435-1-MY-1-QMS

nuhoom.com



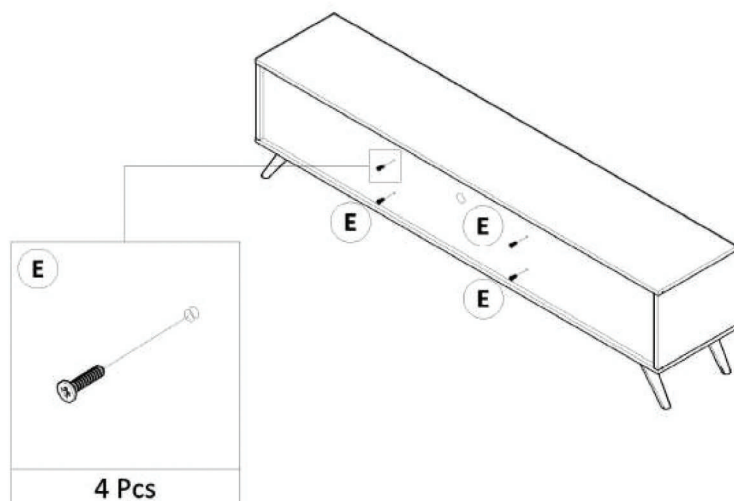
CODING
-336024



ISO 9001:2015
Reg. No. 000435-1-MY-1-QMS

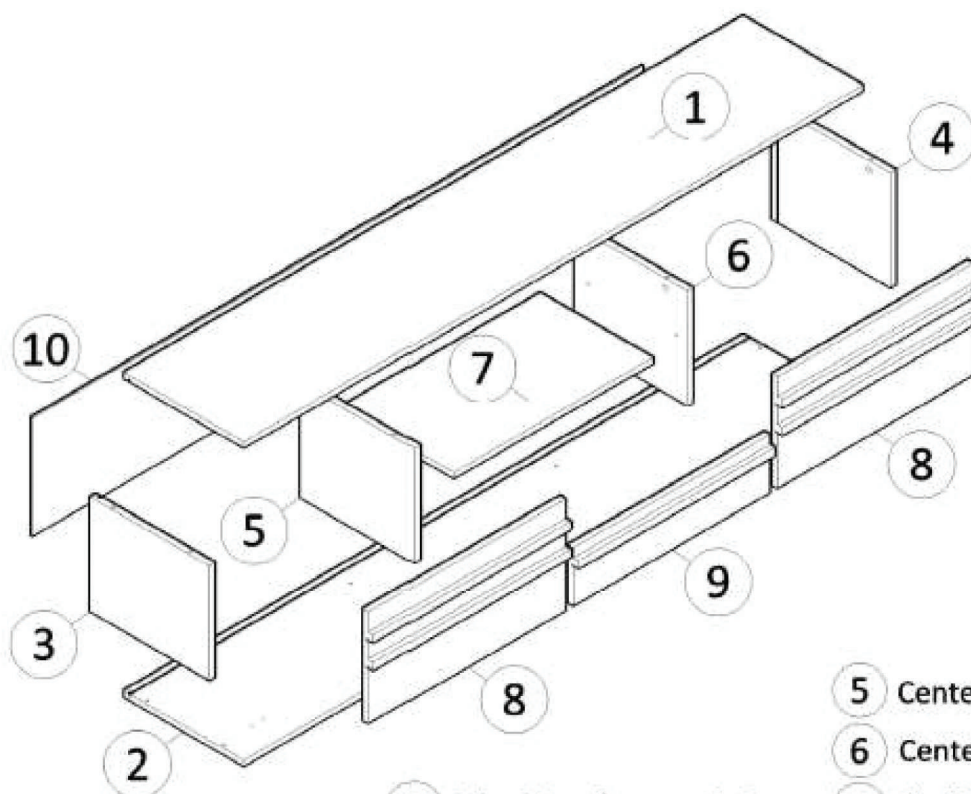
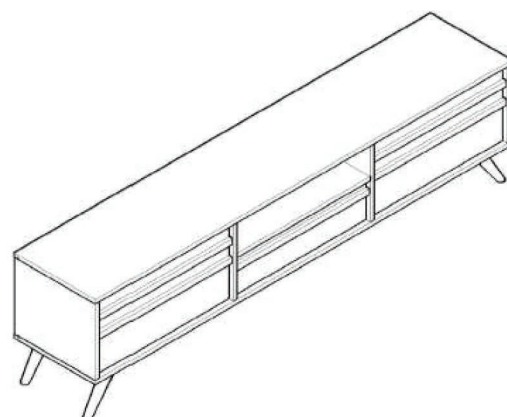
nuhoom.com

13



14

COMPLETED



- 1 Top Panel 1 Pc
- 2 Bottom Panel 1 Pc
- 3 Side Panel (L) 1 Pc
- 4 Side Panel (R) 1 Pc

- 5 Center Panel (L) 1 Pc
- 6 Center Panel (R) 1 Pc
- 7 Shelf Panel 1 Pc
- 8 Big Door Panel 2 Pcs
- 9 Small Door Panel 1 Pc
- 10 Back Mdf Board 1 Pc