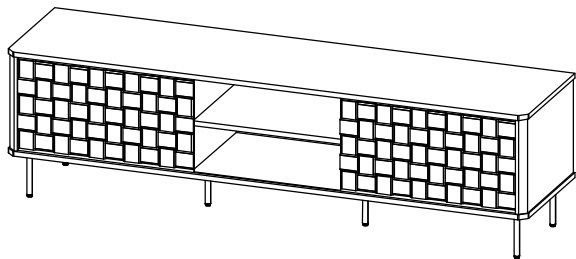


CODING  
- 335082


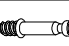





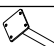



ISO 9001:2015  
Reg. No. 000435-1-007-1-QMS

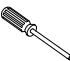
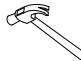
nuhoom.com

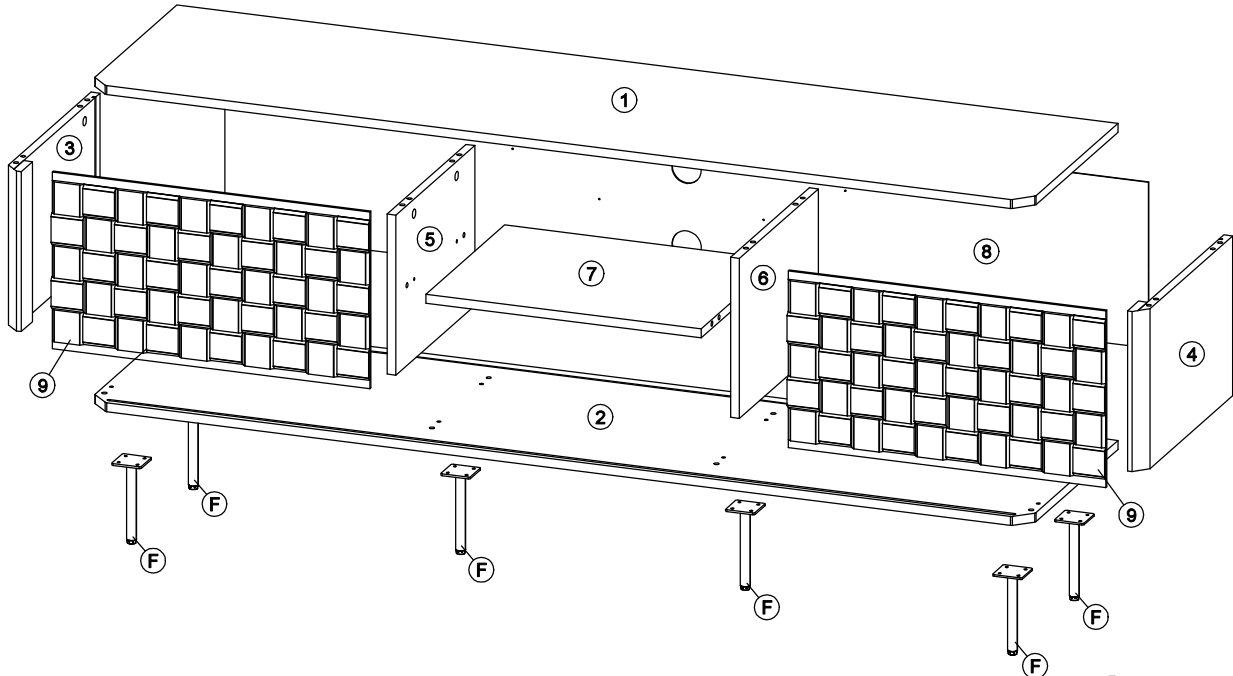
Read the instructions carefully. Remove all the wrappings , staples and straps from the carton. Refer to the hardware and furniture part list for guidance. Make sure that you have all the parts before you start assembling. Place all the wooden furniture parts on a clean, flat and soft surface, such as a carpet or rubbermat to prevent scratches.

CAUTION  
KEEP ALL THE PARTS OUT OF CHILDREN'S REACH.

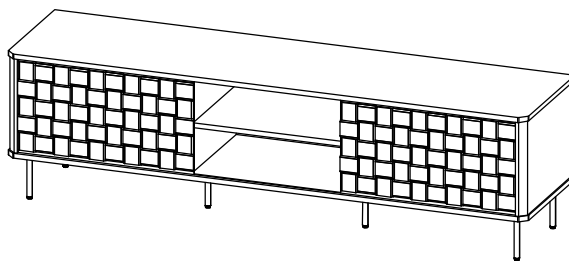
HARDWARE			
A	MINI FIX	A1  A2  A3 	12 SETS
B	M8 X 30MM WOOD DOWEL		20 PCS
C	M6 X 50MM CSK CAP WOOD SCREW		8 PCS
D	ALLEN KEY M4		1 PC
E	M3.5 X 16MM C.B SCREW		24 PCS
F	METAL CENTER LEG ( 50 x 50 x H140MM )		6 PCS
G	PAN HEAD SCREW M4 X 16MM		6 PCS

PART LIST		QTY
1	TOP PANEL	1 PC
2	BOTTOM PANEL	1 PC
3	SIDE PANEL (L)	1 PC
4	SIDE PANEL (R)	1 PC
5	CENTER PANEL (L)	1 PC
6	CENTER PANEL (R)	1 PC
7	MIDDLE PANEL	1 PC
8	BACK PANEL	1 PC
9	DOOR (L/R)	2 PCS

SELF-PREPARED TOOLS: Tools below are NOT Included In package.	
 SCREWDRIVER	 HAMMER



**CODING**  
- 335082

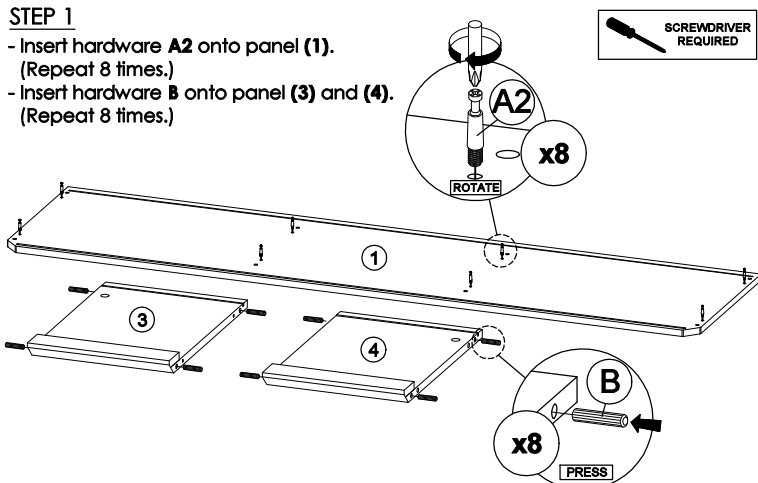


ISO 9001:2015  
Reg. No. 000435-1-INT-1-QMS

**nuhoom.com**

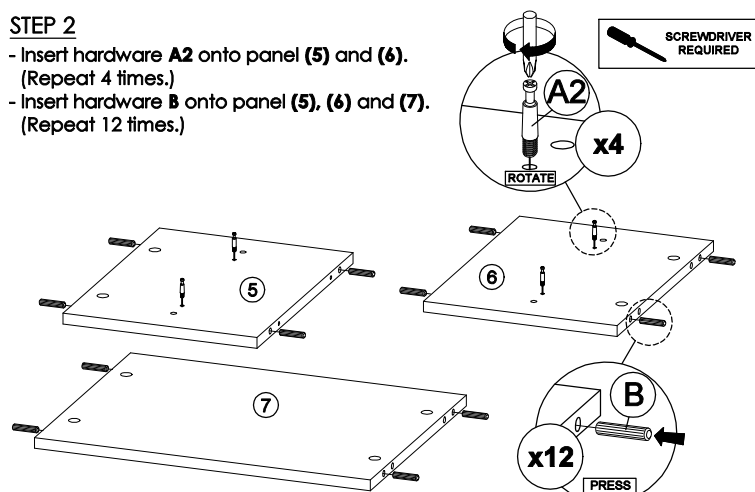
## STEP 1

- Insert hardware **A2** onto panel (1).  
(Repeat 8 times.)
- Insert hardware **B** onto panel (3) and (4).  
(Repeat 8 times.)



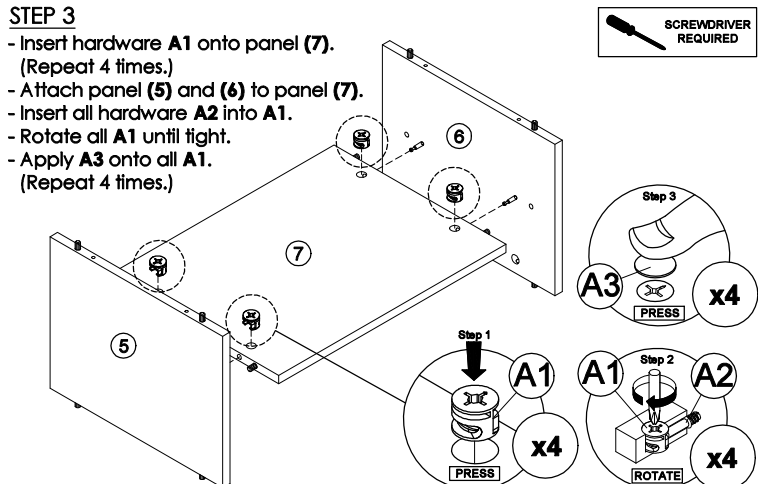
## STEP 2

- Insert hardware **A2** onto panel (5) and (6).  
(Repeat 4 times.)
- Insert hardware **B** onto panel (5), (6) and (7).  
(Repeat 12 times.)



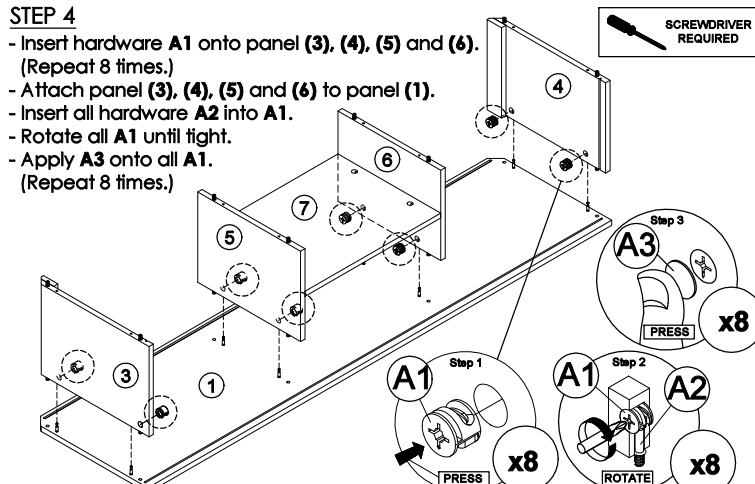
## STEP 3

- Insert hardware **A1** onto panel (7).  
(Repeat 4 times.)
- Attach panel (5) and (6) to panel (7).
- Insert all hardware **A2** into **A1**.
- Rotate all **A1** until tight.
- Apply **A3** onto all **A1**.  
(Repeat 4 times.)



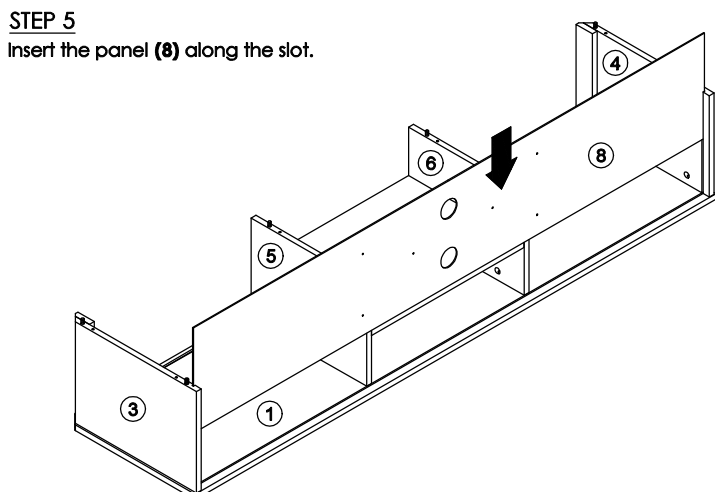
## STEP 4

- Insert hardware **A1** onto panel (3), (4), (5) and (6).  
(Repeat 8 times.)
- Attach panel (3), (4), (5) and (6) to panel (1).
- Insert all hardware **A2** into **A1**.
- Rotate all **A1** until tight.
- Apply **A3** onto all **A1**.  
(Repeat 8 times.)



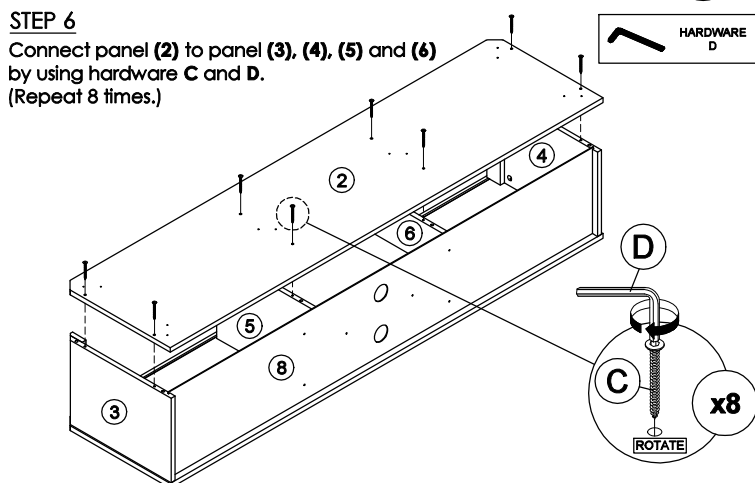
## STEP 5

Insert the panel (8) along the slot.

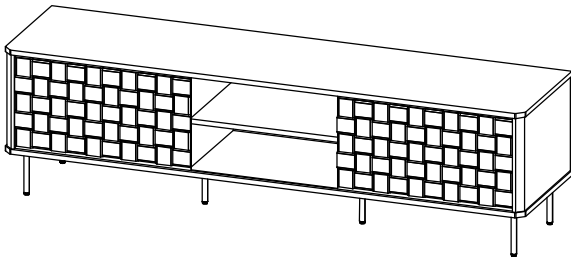


## STEP 6

Connect panel (2) to panel (3), (4), (5) and (6) by using hardware **C** and **D**.  
(Repeat 8 times.)



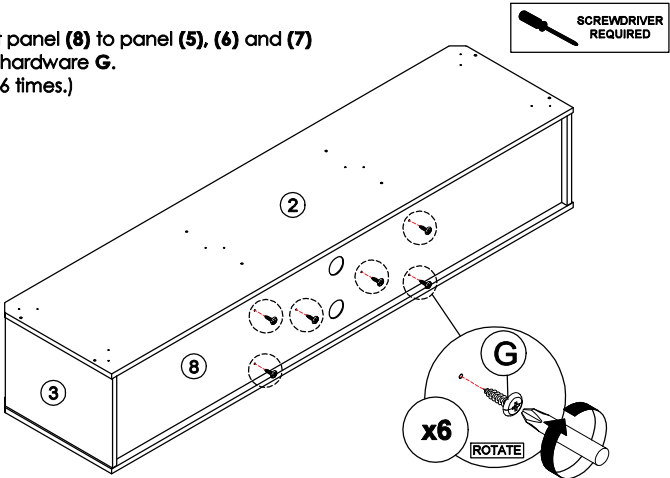
CODING  
- 335082



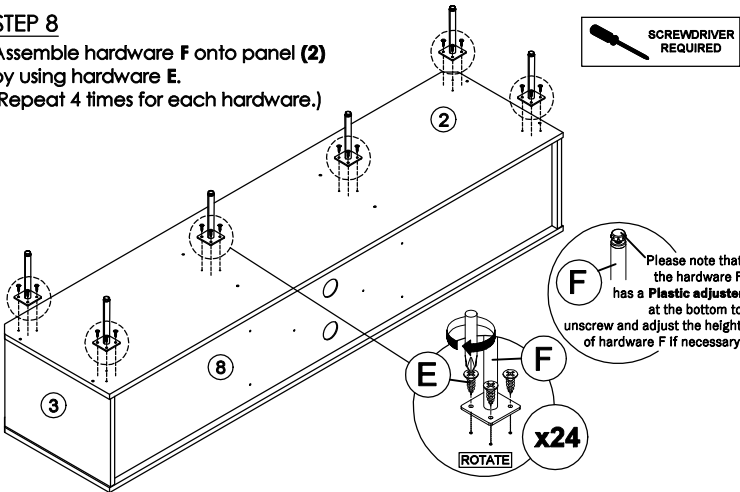
ISO 9001:2015  
Reg. No. 000435-1-MY-1-QMS



**STEP 7**  
Connect panel (8) to panel (5), (6) and (7) by using hardware G. (Repeat 6 times.)



**STEP 8**  
Assemble hardware F onto panel (2) by using hardware E. (Repeat 4 times for each hardware.)



**STEP 9**  
Insert the panel (9) in the top groove first, then enter through the bottom groove.

