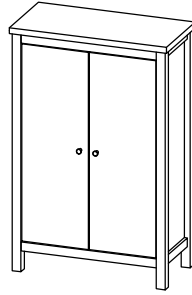


**CODING**  
- 332002



ISO 9001:2015  
Reg. No. 00005-1-INT-1-QMS

nuhoom.com

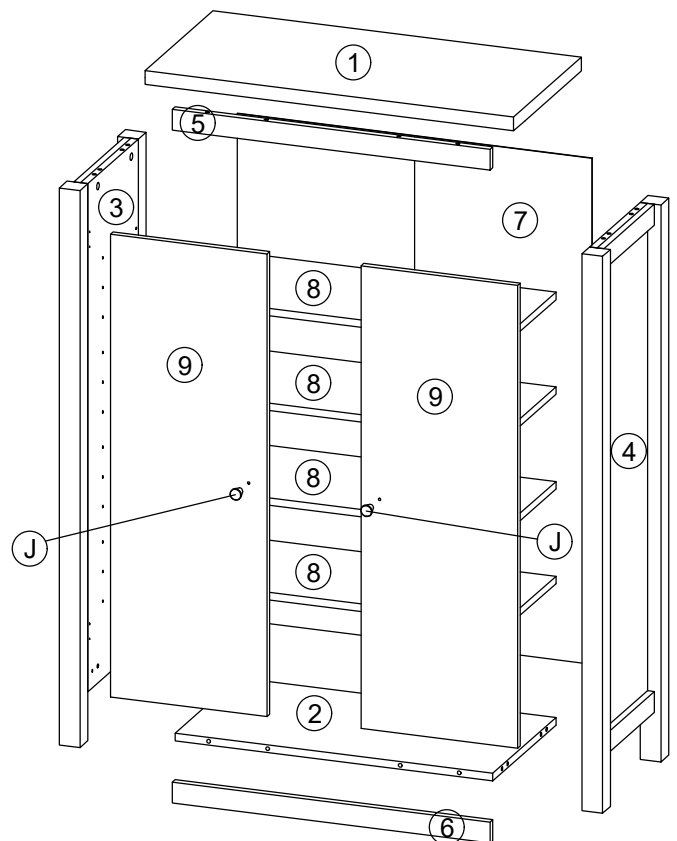
Read the instructions carefully. Remove all the wrappings, staples and straps from the carton. Refer to the hardware and furniture part list for guidance. Make sure that you have all the parts before you start assembling. Place all the wooden furniture parts on a clean, flat and soft surface, such as a carpet or rubbermat to prevent scratches.

**CAUTION**  
KEEP ALL THE PARTS OUT OF CHILDREN'S REACH.

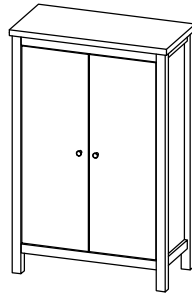
PART LIST		QTY
1	TOP PANEL	1 PC
2	BOTTOM PANEL	1 PC
3	SIDE PANEL (L)	1 PC
4	SIDE PANEL (R)	1 PC
5	FRONT RAIL TOP	1 PC
6	FRONT RAIL BOTTOM	1 PC
7	BACK PANEL	1 PC
8	SHELF PANEL	4 PCS
9	DOOR PANEL	2 PCS

HARDWARE			
A	MINI FIX	A1  A2  A3	12 SETS
B	M8 X 30MM WOOD DOWEL		12 PCS
C	ALLEN KEY M4		1 PC
D	M3.5 X 16MM C.B SCREW		24 PCS
E	M4 X 30MM C.B SCREW		2 PCS
F	5/8 NAIL		24 PCS
G	5/8 PVC NAIL LEG		4 PCS
H	METAL SHELF SUPPORT		16 PCS
I	STOPPER(2 PIN)		2 PCS
J	311 KNOD		2 PCS
K	SOFT CLOSING 7/8 HINGES		4 PCS
TIPPING PACK WITH AI 			2 SETS

SELF-PREPARED TOOLS: Tools below are NOT included in package.	
SCREWDRIVER	HAMMER



**CODING**  
- 332002

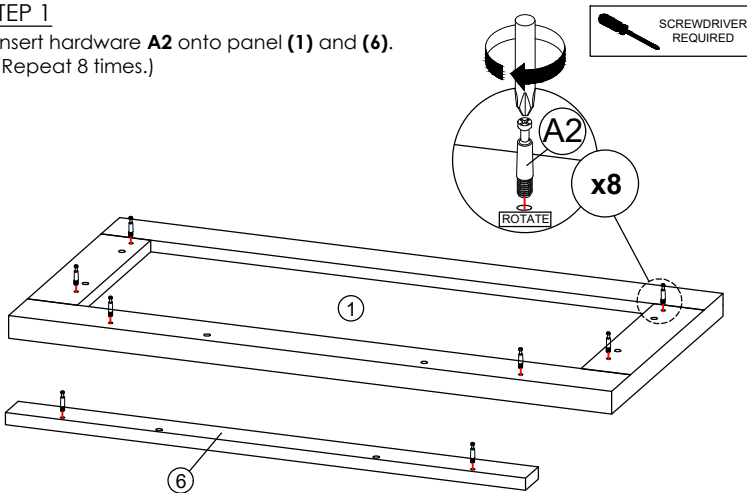


ISO 9001:2015  
Reg. No. 00005-1-INT-1-QMS

nuhoom.com

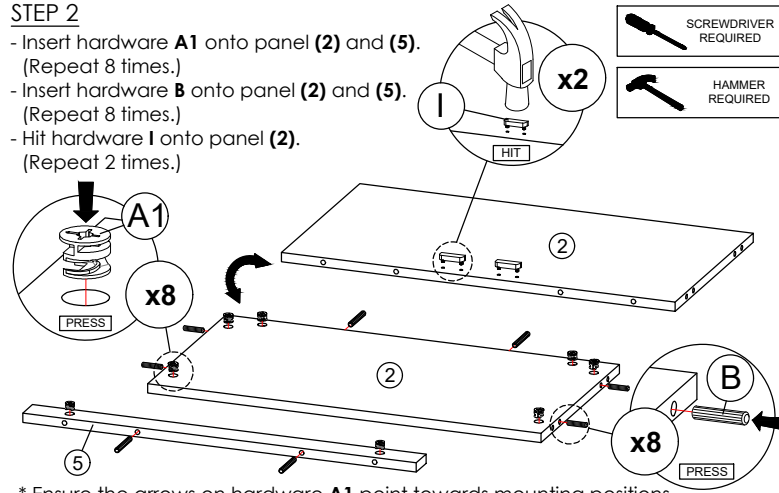
### STEP 1

- Insert hardware **A2** onto panel (1) and (6).  
(Repeat 8 times.)



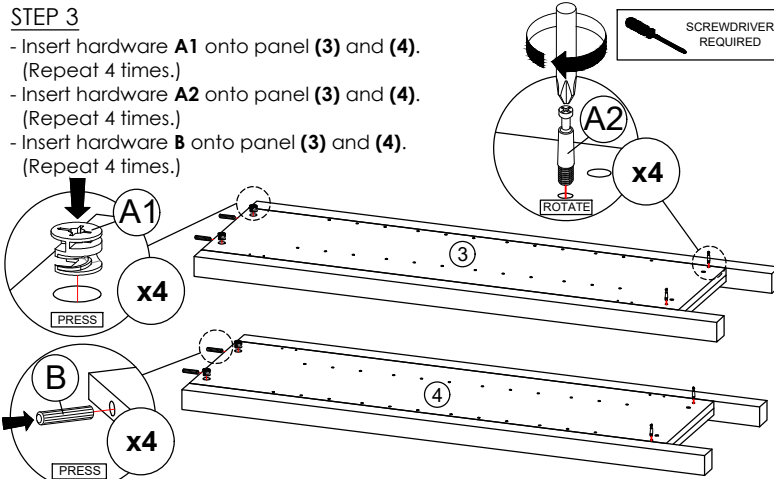
### STEP 2

- Insert hardware **A1** onto panel (2) and (5).  
(Repeat 8 times.)
- Insert hardware **B** onto panel (2) and (5).  
(Repeat 8 times.)
- Hit hardware **I** onto panel (2).  
(Repeat 2 times.)



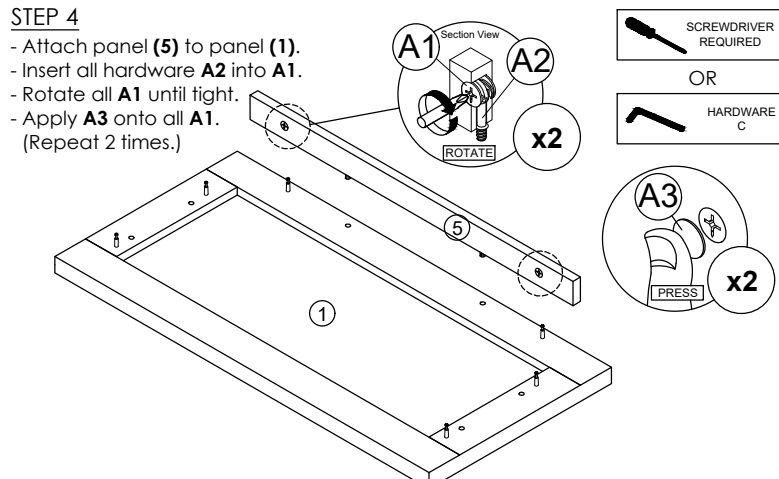
### STEP 3

- Insert hardware **A1** onto panel (3) and (4).  
(Repeat 4 times.)
- Insert hardware **A2** onto panel (3) and (4).  
(Repeat 4 times.)
- Insert hardware **B** onto panel (3) and (4).  
(Repeat 4 times.)



### STEP 4

- Attach panel (5) to panel (1).
- Insert all hardware **A2** into **A1**.
- Rotate all **A1** until tight.
- Apply **A3** onto all **A1**.  
(Repeat 2 times.)

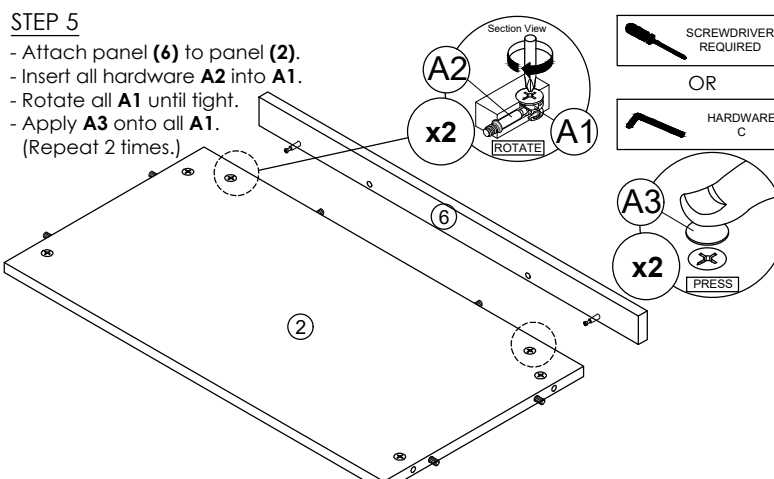


\* Ensure the arrows on hardware **A1** point towards mounting positions.

\* In this step hardware **A1**, **A2** and **B** are pre-inserted.

### STEP 5

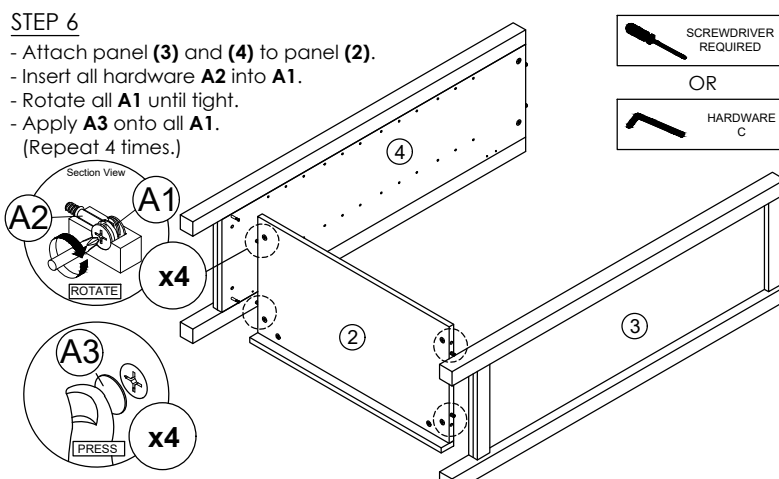
- Attach panel (6) to panel (2).
- Insert all hardware **A2** into **A1**.
- Rotate all **A1** until tight.
- Apply **A3** onto all **A1**.  
(Repeat 2 times.)



\* In this step hardware **A1**, **A2** and **B** are pre-inserted.

### STEP 6

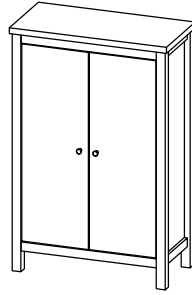
- Attach panel (3) and (4) to panel (2).
- Insert all hardware **A2** into **A1**.
- Rotate all **A1** until tight.
- Apply **A3** onto all **A1**.  
(Repeat 4 times.)



\* In this step hardware **A1**, **A2** and **B** are pre-inserted.

## CODING

- 332002

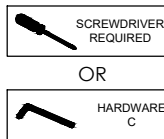
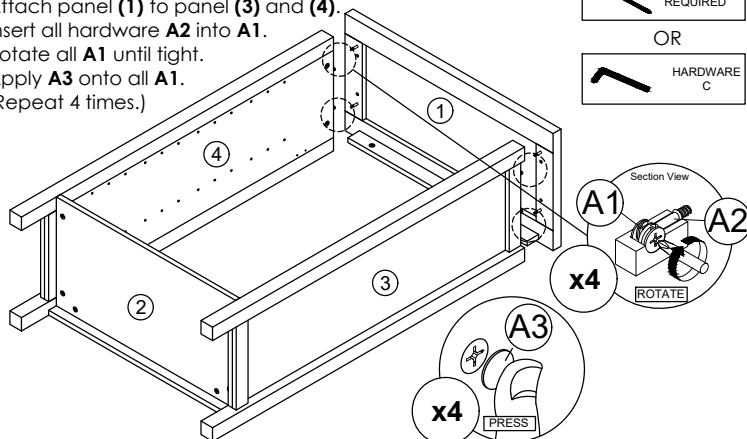


ISO 9001:2015  
Reg. No. 00005-1-INT-1-QMS

nuhoom.com

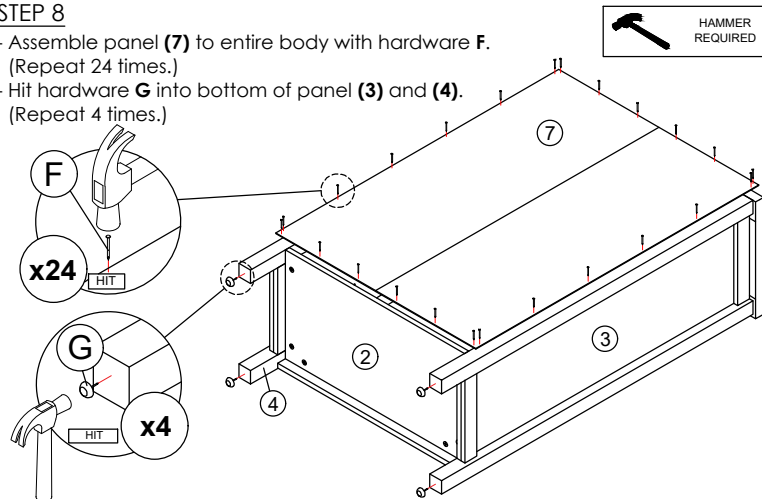
### STEP 7

- Attach panel (1) to panel (3) and (4).
- Insert all hardware A2 into A1.
- Rotate all A1 until tight.
- Apply A3 onto all A1.
- (Repeat 4 times.)



### STEP 8

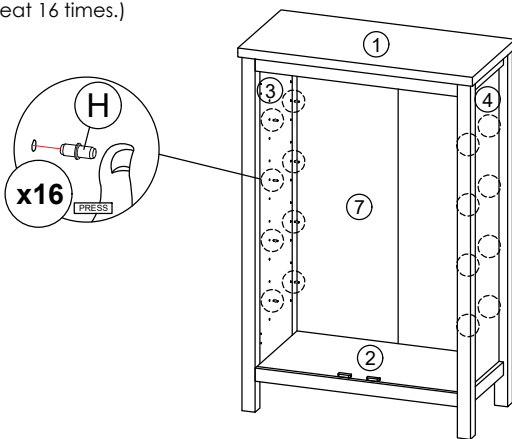
- Assemble panel (7) to entire body with hardware F.
- (Repeat 24 times.)
- Hit hardware G into bottom of panel (3) and (4).
- (Repeat 4 times.)



\* In this step hardware A1, A2 and B are pre-inserted.

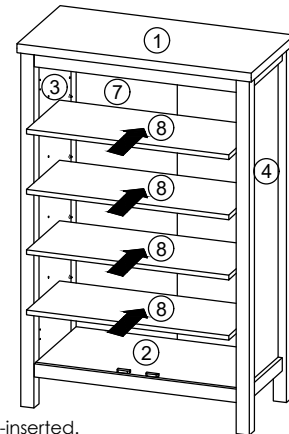
### STEP 9

- Insert hardware H into mounting positions on panel (3) and (4) by hand.
- (Repeat 16 times.)



### STEP 10

- Assemble panel (8) into between panel (3) and (4).
- (Repeat 4 times.)

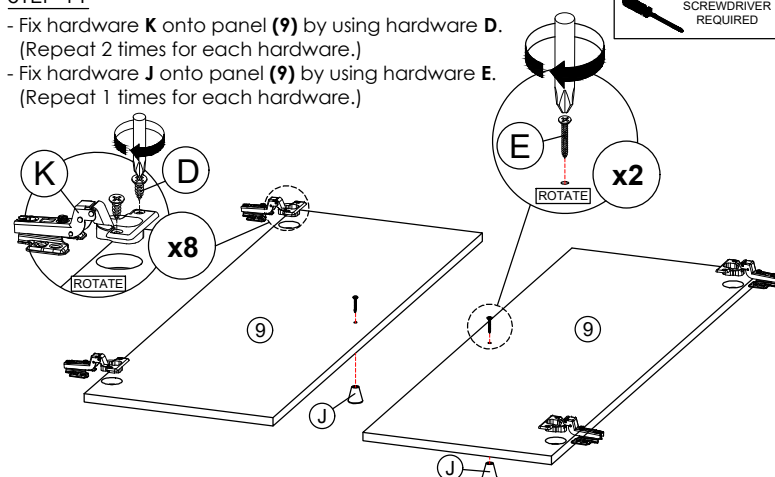


\*In this step hardware H are pre-inserted.

\*Hardware H can fix to another up and down hole on panel (3) and (4) for adjust panel (8) to high or lower.

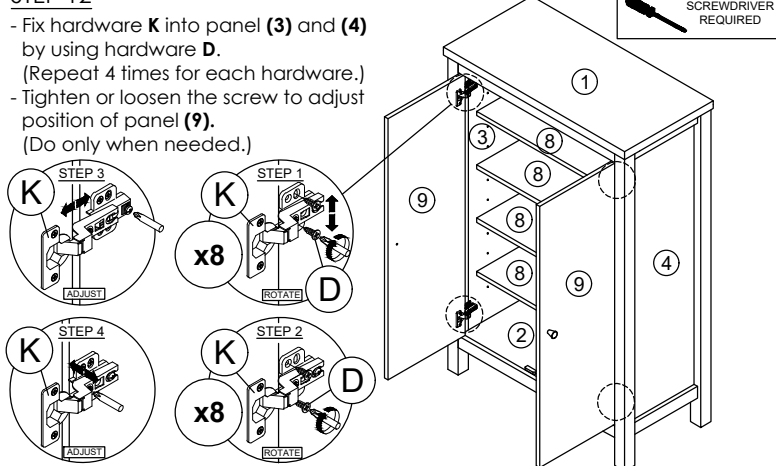
### STEP 11

- Fix hardware K onto panel (9) by using hardware D.
- (Repeat 2 times for each hardware.)
- Fix hardware J onto panel (9) by using hardware E.
- (Repeat 1 times for each hardware.)



### STEP 12

- Fix hardware K into panel (3) and (4) by using hardware D.
- (Repeat 4 times for each hardware.)
- Tighten or loosen the screw to adjust position of panel (9).
- (Do only when needed.)



\* In this step hardware K have been assembled in panel (9).