

CODING

241623

241624

ISO 9001:2015
Reg. No. 000435-1-MY-1-QMS

nesthouz.com

Read the instructions carefully. Remove all the wrappings , staples and straps from the carton. Refer to the hardware and furniture part list for guidance. Make sure that you have all the parts before you start assembling. Place all the wooden furniture parts on a clean, flat and soft surface, such as a carpet or rubbermat to prevent scratches.

CAUTION

KEEP ALL THE PARTS OUT OF CHILDREN'S REACH.

ITEM	PHOTO	HAREWARE NAME	QTY
Ⓐ		JCBC SCREW M6x50MM	8
Ⓑ		FLAT WASHER M6x13x1MM	8
Ⓒ		SPRING WASHER M6	8
Ⓓ		DOWEL M8x30MM	4
Ⓔ		CHIPBOARD SCREW M4x38MM	4
Ⓕ		ALLEN KEY M4	1

ITEM	PHOTO	PARTS NAME	QTY
①		BACK REST	1
②		FRONT LEG	1
③		APRON L & R	2
④		SEAT CUSHION	1

CODING

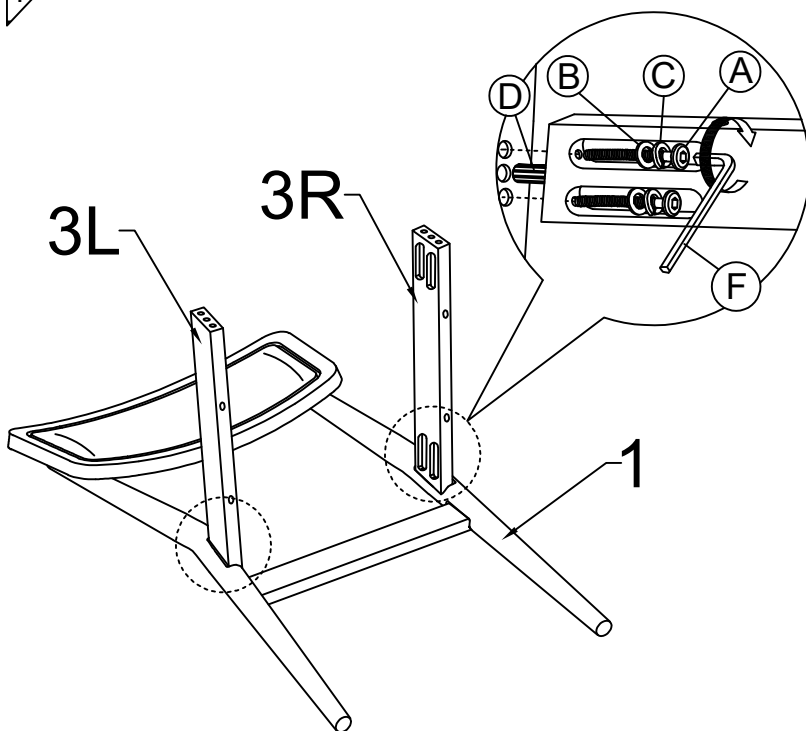
241623

241624

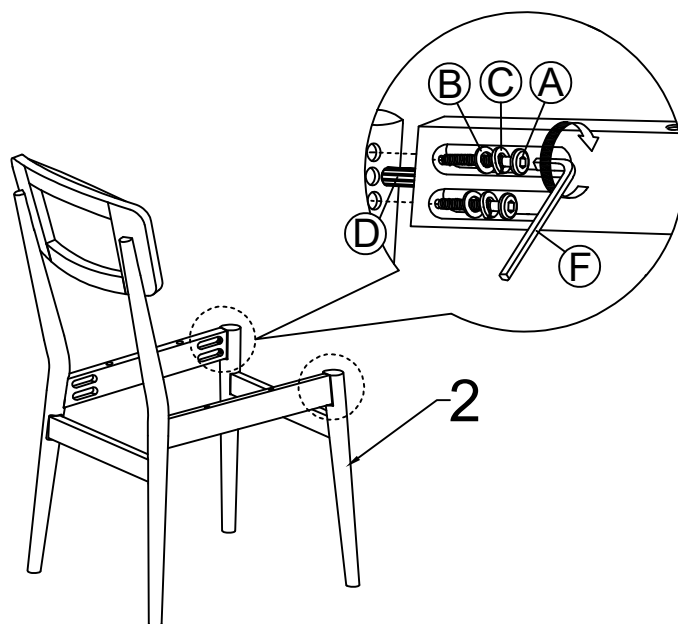
ISO 9001:2015
Reg. No. 000435-1-MY-1-QMS

nesthouz.com

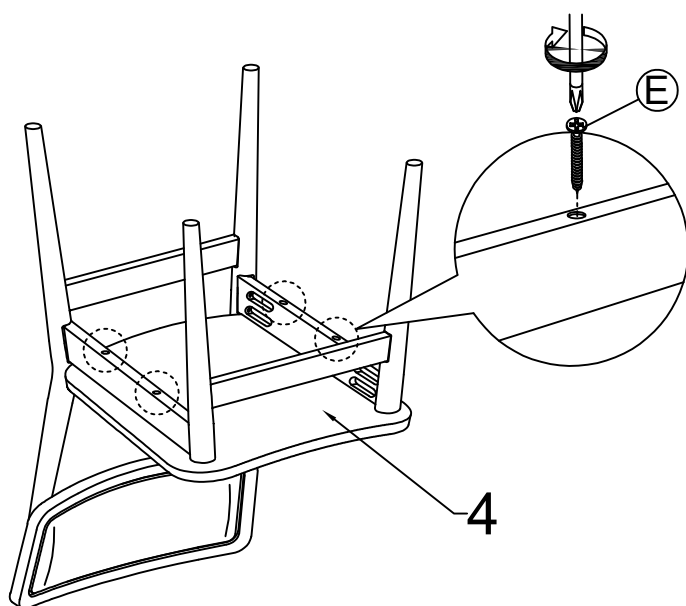
1



2



3



4

