

**CODING**  
- 151037



ISO 9001:2015  
Reg. No. 00005-1-007-1-QMS

nuhoom.com

Read the instructions carefully. Remove all the wrappings, staples and straps from the carton. Refer to the hardware and furniture part list for guidance. Make sure that you have all the parts before you start assembling. Place all the wooden furniture parts on a clean, flat and soft surface, such as a carpet or rubbermat to prevent scratches.

**CAUTION**  
KEEP ALL THE PARTS OUT OF CHILDREN'S REACH.

HARDWARE			
A	MINI FIX	A1  A2  A3	4 SETS
B	M8 X 30MM WOOD DOWEL		8 PCS
C	M6 X 50MM CSK CAP WOOD SCREW		4 PCS
D	ALLEN KEY M4		1 PC
E	M3 X 12MM C.B SCREW		4 PCS
F	M3.5 X 16MM C.B SCREW		40 PCS
G	M4 X 38MM C.B SCREW		16 PCS
H	5/8 NAIL		28 PCS
I	HANDLE EM 0071		2 PCS
J	METAL LEG 90 x 90 x 10 x H145MM		4 PCS
K	14" DRAWER SLIDE	K1 (L/R) K2 (L/R)	2 SETS

PART LIST		QTY
1	TOP PANEL	1 PC
2	BOTTOM PANEL	1 PC
3	SIDE PANEL (L)	1 PC
4	SIDE PANEL (R)	1 PC
5	BACK PANEL	1 PC
6	DRAWER FRONT	2 PCS
7	DRAWER SIDE	4 PCS
8	DRAWER BACK	2 PCS
9	DRAWER BOTTOM	2 PCS

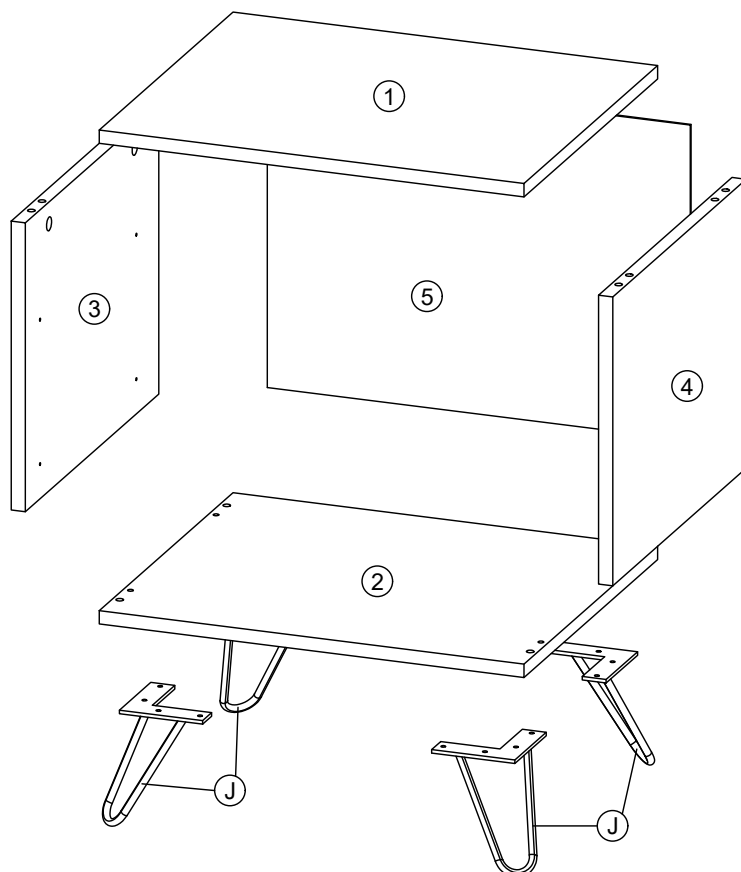
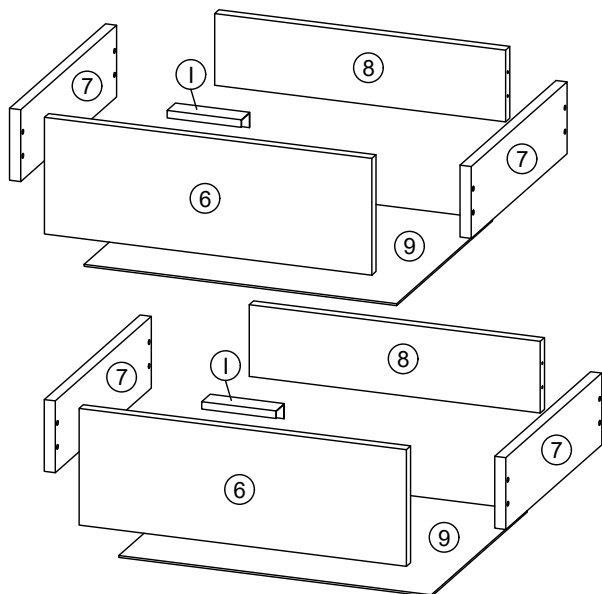
**SELF-PREPARED TOOLS:** Tools below are NOT included in package.



SCREWDRIVER



HAMMER



**CODING**  
- 151037

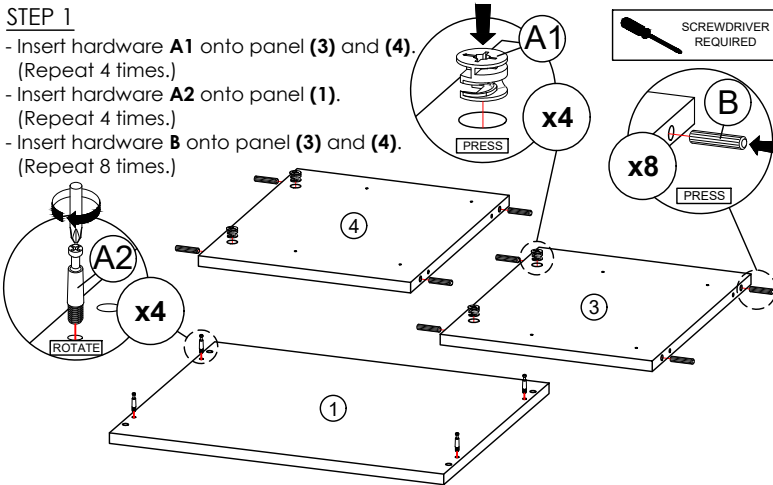


ISO 9001:2015  
Reg. No. 0005-1-007-1-QMS

nuhoom.com

**STEP 1**

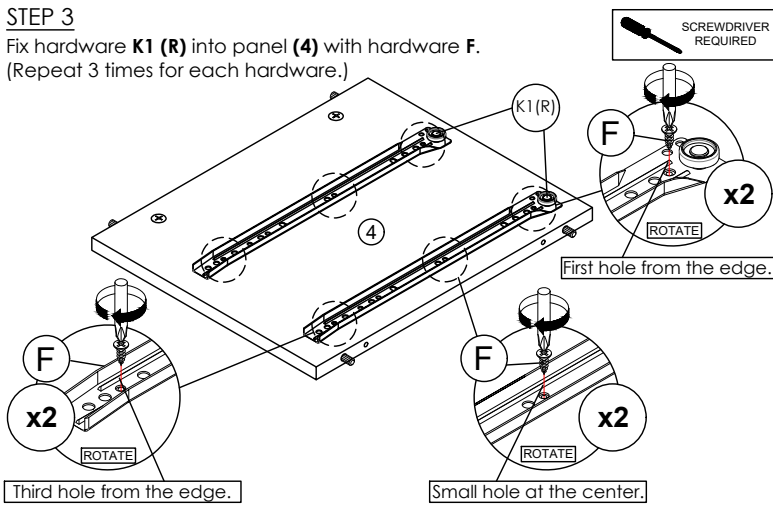
- Insert hardware **A1** onto panel **(3)** and **(4)**.  
(Repeat 4 times.)
- Insert hardware **A2** onto panel **(1)**.  
(Repeat 4 times.)
- Insert hardware **B** onto panel **(3)** and **(4)**.  
(Repeat 8 times.)



\* Ensure the arrows on hardware **A1** point towards mounting positions.

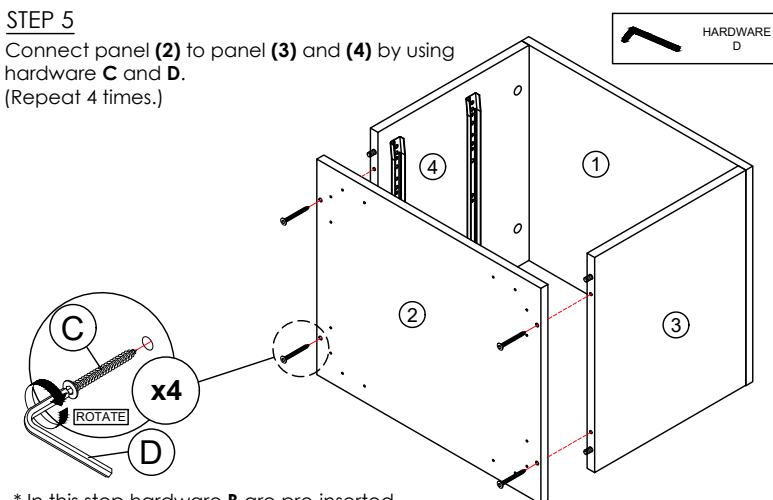
**STEP 3**

- Fix hardware **K1 (R)** into panel **(4)** with hardware **F**.  
(Repeat 3 times for each hardware.)



**STEP 5**

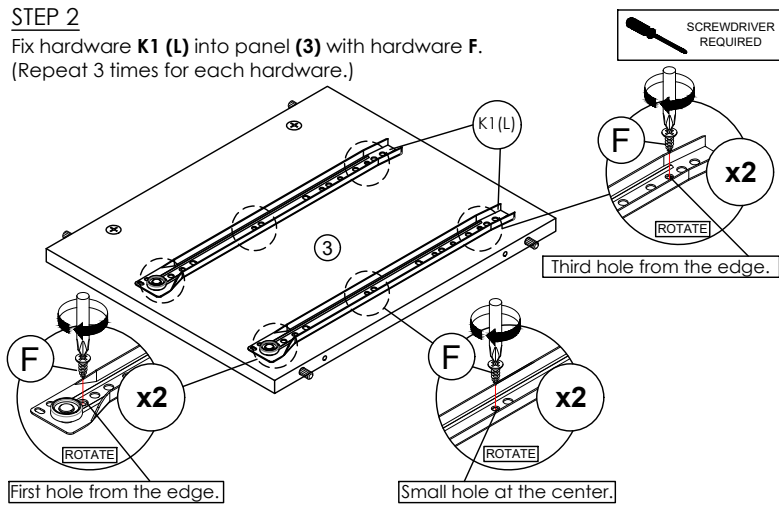
- Connect panel **(2)** to panel **(3)** and **(4)** by using hardware **C** and **D**.  
(Repeat 4 times.)



\* In this step hardware **B** are pre-inserted.

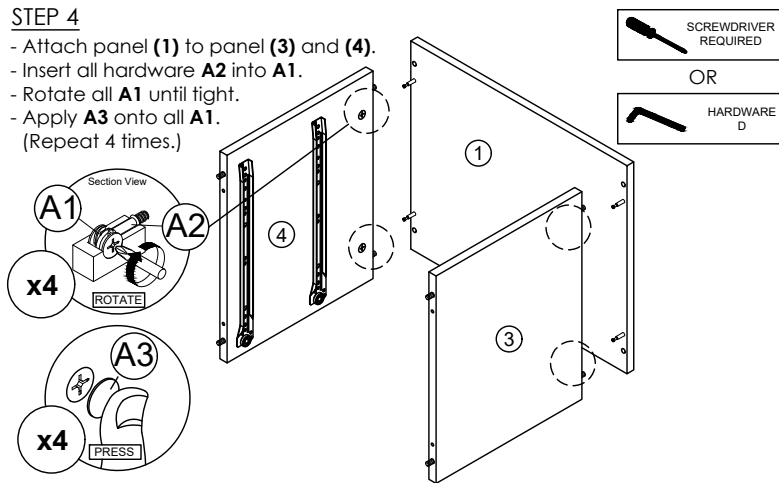
**STEP 2**

- Fix hardware **K1 (L)** into panel **(3)** with hardware **F**.  
(Repeat 3 times for each hardware.)



**STEP 4**

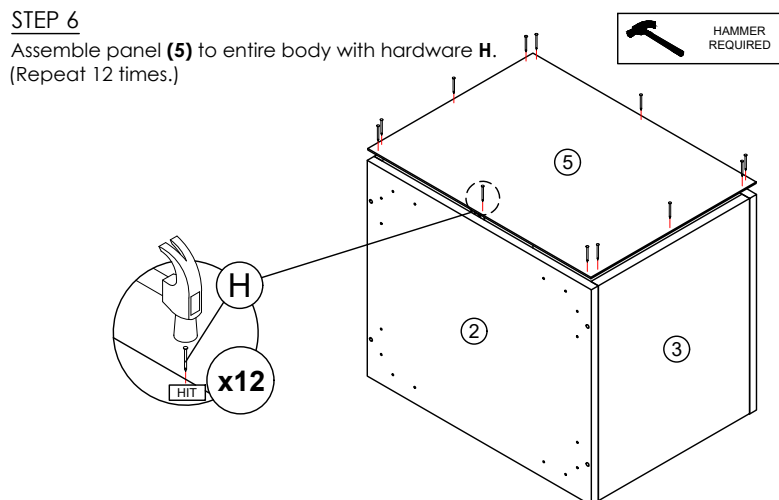
- Attach panel **(1)** to panel **(3)** and **(4)**.
- Insert all hardware **A2** into **A1**.
- Rotate all **A1** until tight.
- Apply **A3** onto all **A1**.  
(Repeat 4 times.)



\* In this step hardware **A1**, **A2** and **B** are pre-inserted.

**STEP 6**

- Assemble panel **(5)** to entire body with hardware **H**.  
(Repeat 12 times.)



**CODING**  
- 151037

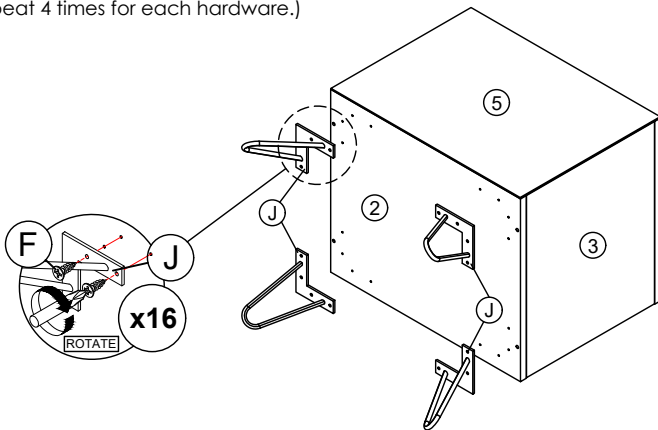


ISO 9001:2015  
Reg. No. 00005-1-007-1-Q08

nuhoom.com

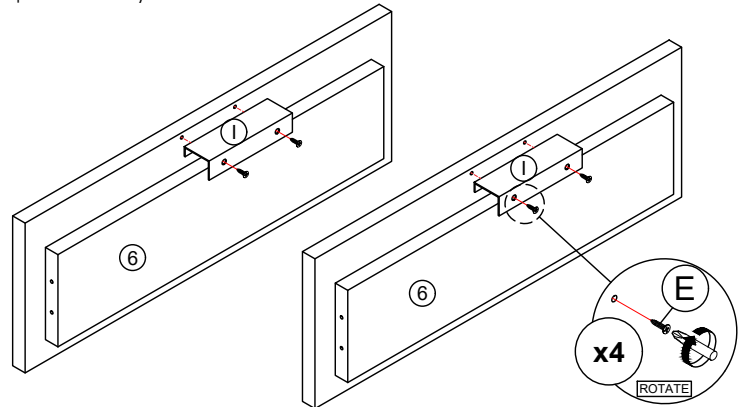
**STEP 7**

Assemble hardware **J** onto panel **(2)** by using hardware **F**.  
(Repeat 4 times for each hardware.)



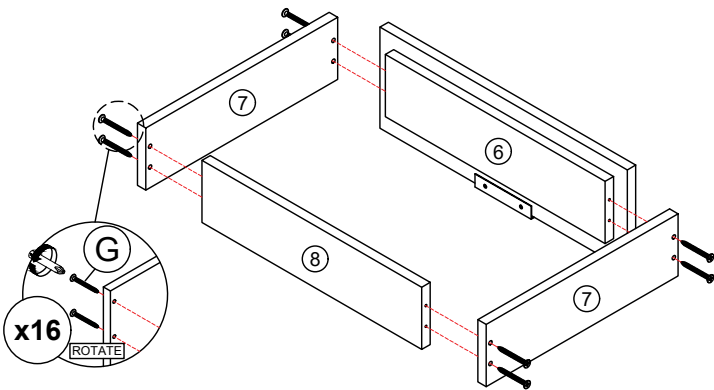
**STEP 8**

Fix hardware **I** onto panel **(6)** by using hardware **E**.  
(Repeat 4 times.)



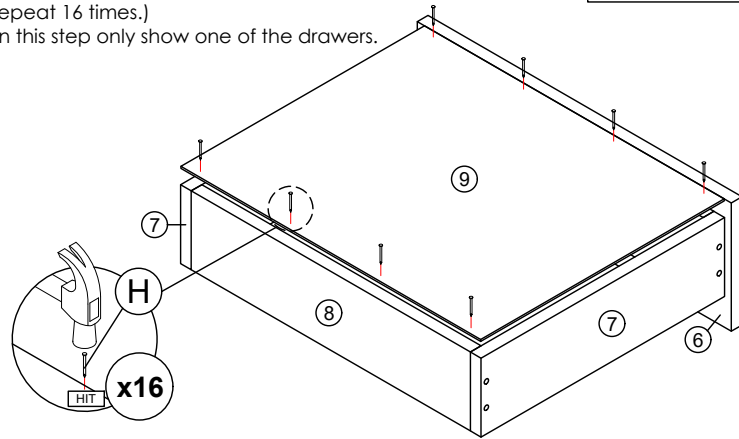
**STEP 9**

Assemble panel **(7)** to panel **(6)** and **(8)** by using hardware **G**.  
(Repeat 16 times.)  
\* In this step only show one of the drawers.



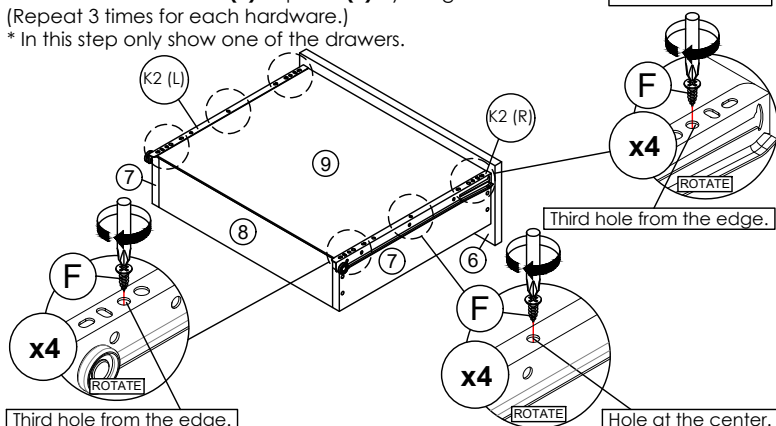
**STEP 10**

Assemble panel **(9)** to entire body with hardware **H**.  
(Repeat 16 times.)  
\* In this step only show one of the drawers.



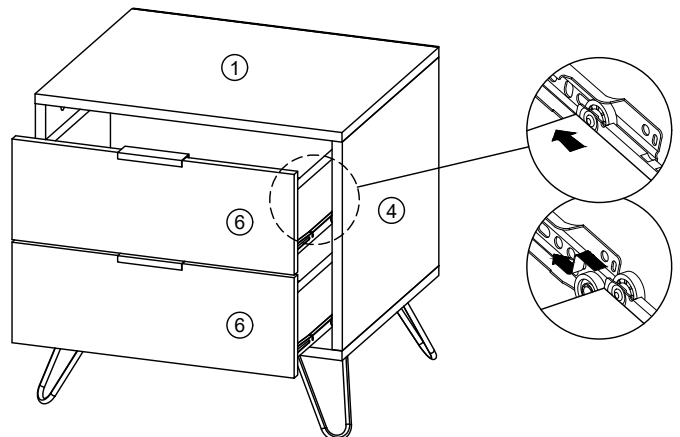
**STEP 11**

Assemble hardware **K2 (R)** to panel **(9)** by using hardware **F**.  
(Repeat 3 times for each hardware.)  
\* In this step only show one of the drawers.



**STEP 12**

Put all the drawer in place along the drawer slides.



\*Hardware **K2 (L/R)** shall be leaning against panel **(6)** when assembling.