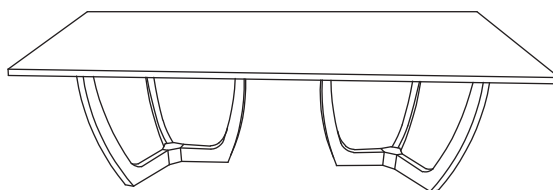


CODING

- 148013



ISO 9001:2015
Reg. No. 000435-1-MY-1-QMS

nesthouz.com

Read the instructions carefully. Remove all the wrappings , staples and straps from the carton. Refer to the hardware and furniture part list for guidance. Make sure that you have all the parts before you start assembling. Place all the wooden furniture parts on a clean, flat and soft surface, such as a carpet or rubbermat to prevent scratches.

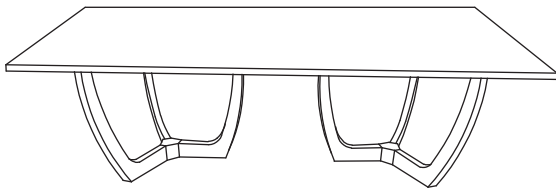
CAUTION

KEEP ALL THE PARTS OUT OF CHILDREN'S REACH.

ITEM	PHOTO	HAREWARE NAME	QTY
(A)		JCBC SCREW M8 x 60MM	6
(B)		JCBC SCREW M6 x 40MM	6
(C)		SPRING WASHER (M8)	6
(D)		SPRING WASHER (M6)	6
(E)		WOOD DOWEL	6
(F)		CSK M4 x 32MM	26
(G)		M4 ALLEN KEY	1
(H)		M5 ALLEN KEY	1

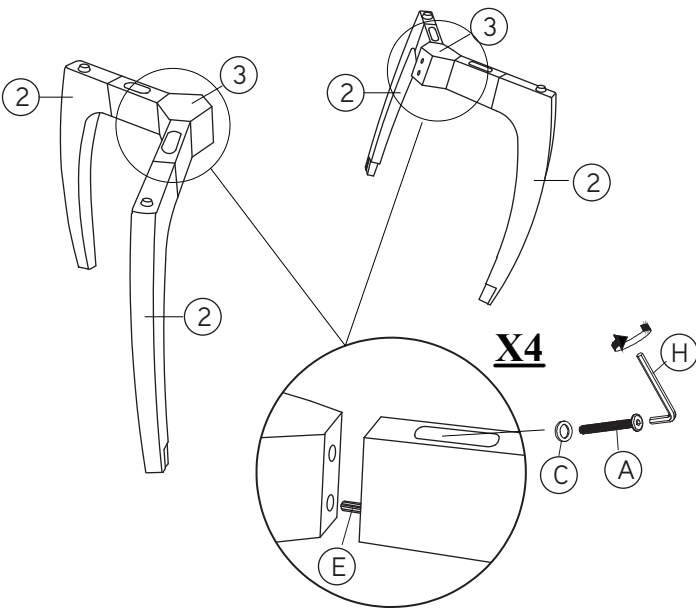
ITEM	PHOTO	PARTS NAME	QTY
(1)		Table Top	1
(2)		Leg	6
(3)		Leg Padestal	2
(4)		Base Support	2

CODING
- 148013

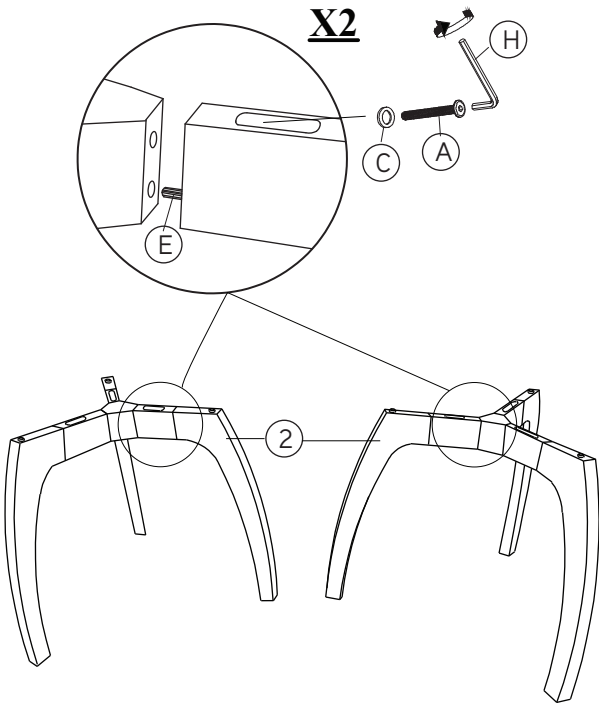


ISO 9001:2015
Reg. No. 000435-1-MY-1-QMS

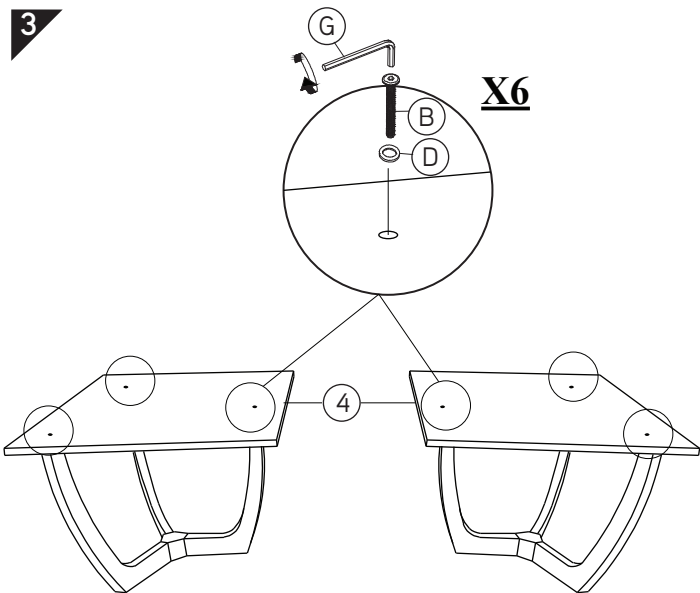
1



2



3



4

