

RODO

ASSEMBLY GUIDE

CODING

-144090






ISO 9001:2015
Reg. No. 000435-1-MY-1-QMS

LUOMA.COM

Read the instruction carefully. Remove all the wrapping, staples and straps from the carton. Refer to the hardware and furniture part list for guidance. Make sure that you have all parts before you start assembling. Place all the wooden furniture parts on a clean, flat and soft surface, such as a carpet or rubbermat to prevent scratches.

CAUTION

KEEP ALL PARTS OUT OF CHILDREN'S REACH.

ITEM	HARDWARE LIST (FOR 2 CHAIRS)	QTY
C	M6 X 25MM JCBC BOLT 	16 PCS
D	1/4 SPRING WASHER 	16 PCS
E	M4 ALLEN KEY (SHORT) 	1 PC

ITEM	PART LIST	QTY
A	TABLE TOP	1 PC
B	TABLE LEG	4 PCS

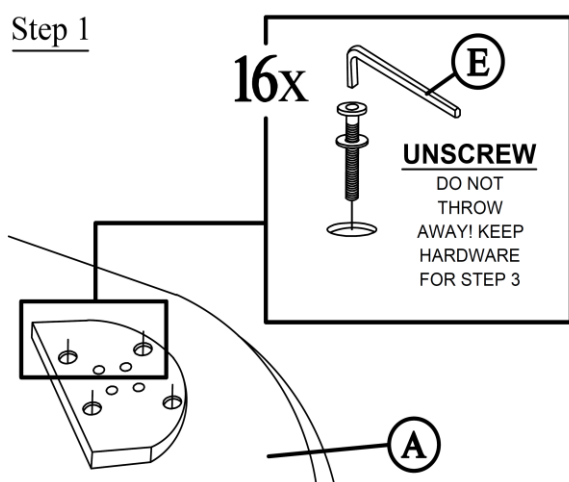
CODING
-144090



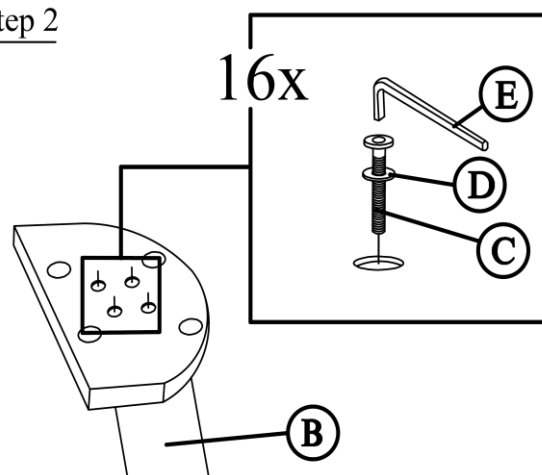
ISO 9001:2015
Reg. No. 000435-1-MY-1-QMS

LUOMA.COM

Step 1



Step 2



Step 3

