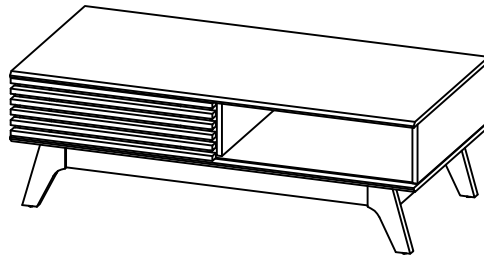


**CODING**  
- 134144



ISO 9001:2015  
Reg. No. 000435-1-007-1-QMS

**nuhoom.com**

Read the instructions carefully. Remove all the wrappings , staples and straps from the carton. Refer to the hardware and furniture part list for guidance. Make sure that you have all the parts before you start assembling. Place all the wooden furniture parts on a clean, flat and soft surface, such as a carpet or rubbermat to prevent scratches.

**CAUTION**  
KEEP ALL THE PARTS OUT OF CHILDREN'S REACH.

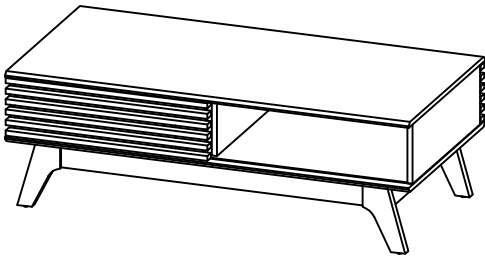
PART LIST		QTY
1	TOP PANEL	1 PC
2	BOTTOM PANEL	1 PC
3	SIDE PANEL - L	1 PC
4	SIDE PANEL - R	1 PC
5	CENTER PANEL	1 PC
6	SLIDING DOOR	2 PCS
7	APRON SHORT	2 PCS
8	CABINET LEG	2 PCS

HARDWARE				
A	MINI FIX	A1  A2  A3	10 SETS	
B	M8 X 30MM WOOD DOWEL		20 PCS	
C	M6 X 50MM CSK CAP WOOD SCREW		6 PCS	
D	ALLEN KEY M4		1 PC	
E	M3 X 12MM C.B SCREW		16 PCS	
F	M4 X 65MM C.B SCREW		14 PCS	
G	5/8 PVC NAIL LEG		4 PCS	
H	U 480 ROLLER	H1  H2	4 SETS	

**SELF-PREPARED TOOLS:** Tools below are NOT included in package.

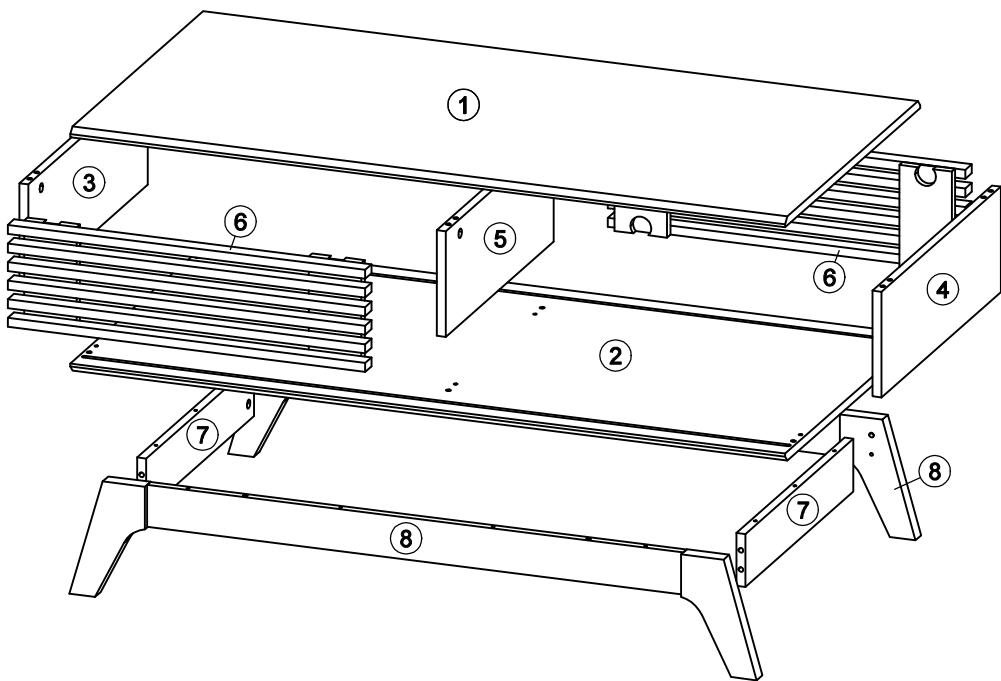
	SCREWDRIVER		HAMMER
--	-------------	--	--------

CODING  
- 134144

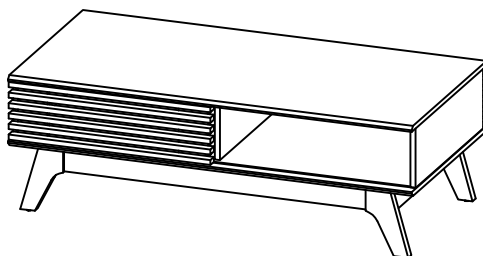


ISO 9001:2015  
Reg. No. 000435-1-001-1-QM8

nuhoom.com



**CODING**  
- 134144

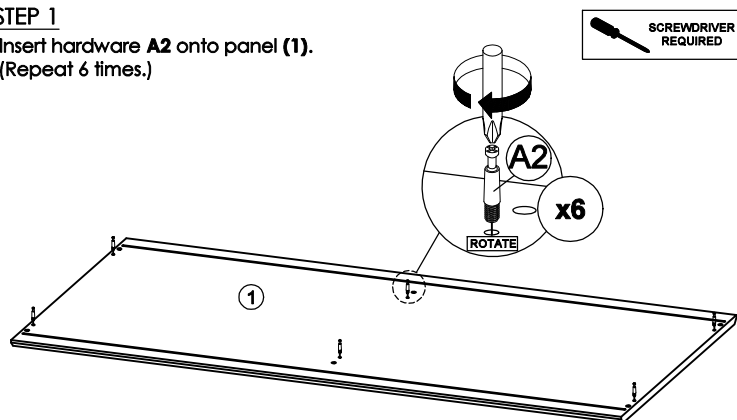


ISO 9001:2015  
Reg. No. 000435-1-001-1-QMS

**nuhoom.com**

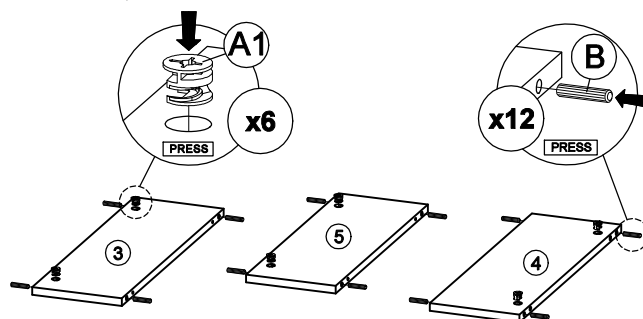
## STEP 1

- Insert hardware **A2** onto panel (1).  
(Repeat 6 times.)



## STEP 2

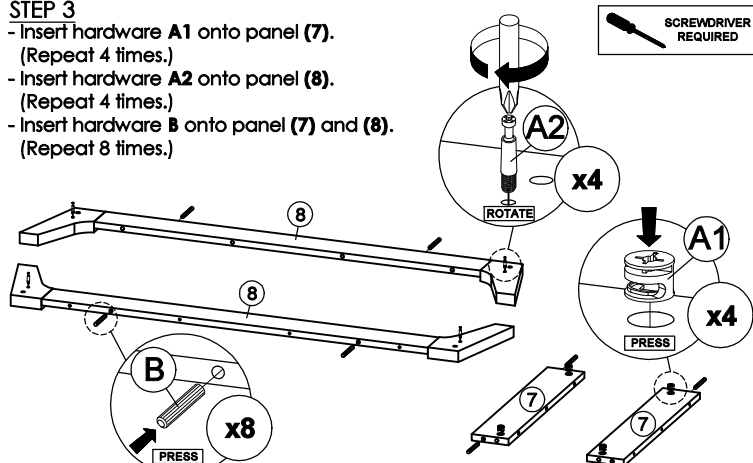
- Insert hardware **A1** onto panel (3), (4) and (5).  
(Repeat 6 times.)
- Insert hardware **B** onto panel (3), (4) and (5).  
(Repeat 12 times.)



\* Ensure the arrows on hardware **A1** point towards mounting positions.

## STEP 3

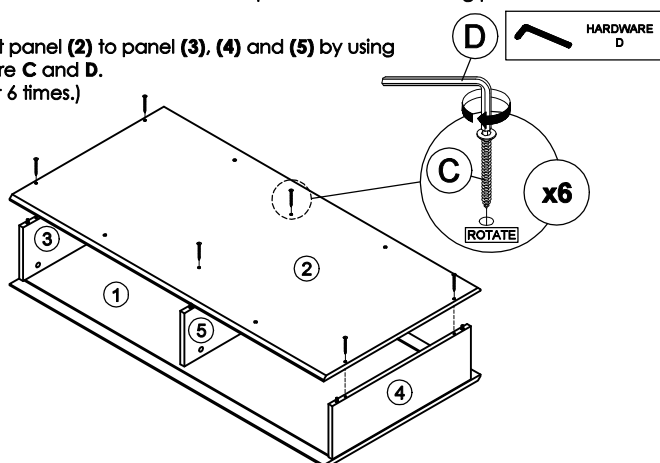
- Insert hardware **A1** onto panel (7).  
(Repeat 4 times.)
- Insert hardware **A2** onto panel (8).  
(Repeat 4 times.)
- Insert hardware **B** onto panel (7) and (8).  
(Repeat 8 times.)



\* Ensure the arrows on hardware **A1** point towards mounting positions.

## STEP 5

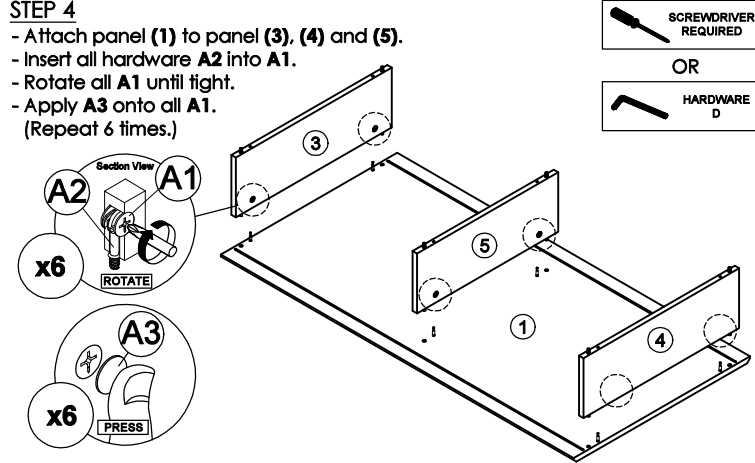
- Connect panel (2) to panel (3), (4) and (5) by using hardware **C** and **D**.  
(Repeat 6 times.)



\* In this step hardware **B** are pre-inserted.

## STEP 4

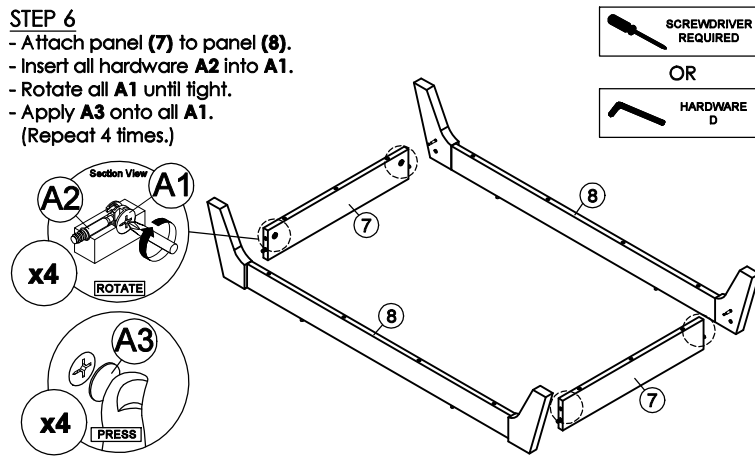
- Attach panel (1) to panel (3), (4) and (5).
- Insert all hardware **A2** into **A1**.
- Rotate all **A1** until tight.
- Apply **A3** onto all **A1**.  
(Repeat 6 times.)



\* In this step hardware **A1**, **A2** and **B** are pre-inserted.

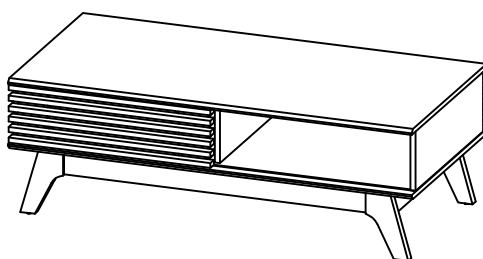
## STEP 6

- Attach panel (7) to panel (8).
- Insert all hardware **A2** into **A1**.
- Rotate all **A1** until tight.
- Apply **A3** onto all **A1**.  
(Repeat 4 times.)



\* In this step hardware **A1**, **A2** and **B** are pre-inserted.

**CODING**  
- 134144

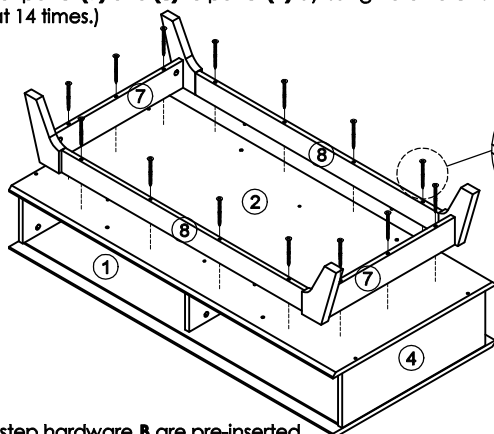
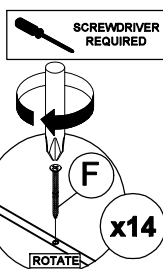


**ISO 9001:2015**  
Reg. No. 000435-1-MY-1-QMS

**nuhoom.com**

## STEP 7

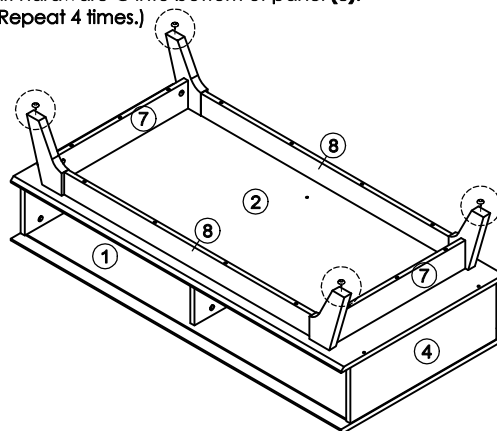
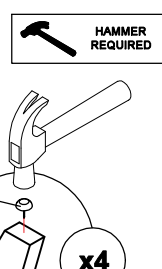
- Connect panel (7) and (8) to panel (2) by using hardware F.  
(Repeat 14 times.)



\* In this step hardware B are pre-inserted.

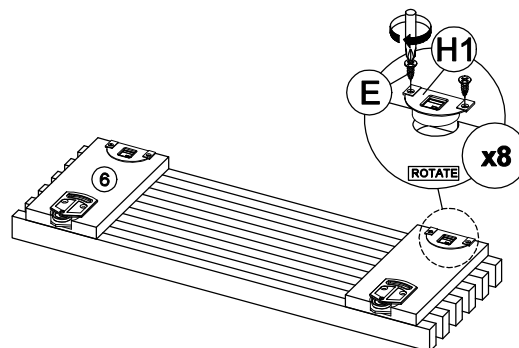
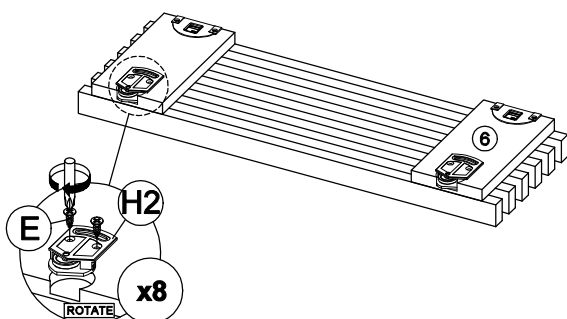
## STEP 8

- Hit hardware G into bottom of panel (8).  
(Repeat 4 times.)



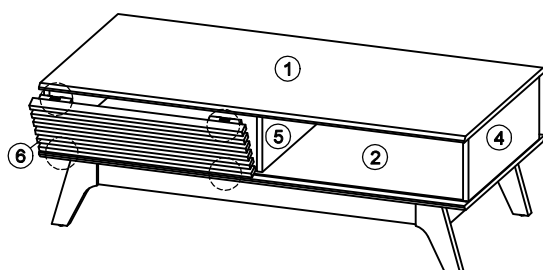
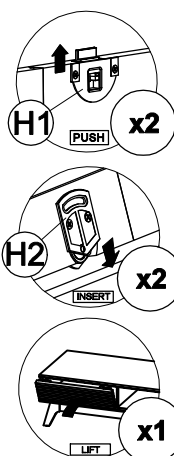
## STEP 9

- Assemble hardware H1 and H2 to two panel (6) with hardware E.  
(Repeat 2 times for each hardware.)



## STEP 10

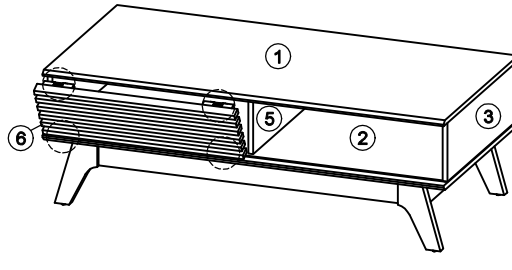
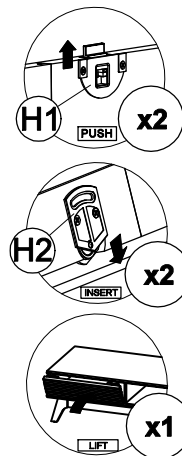
- Put the panel (6) in place.  
(Repeat 1 times.)



\* In this step hardware H1 and H2 are pre-inserted.

## STEP 11

- Put the panel (6) in place.  
(Repeat 1 times.)



\* In this step hardware H1 and H2 are pre-inserted.