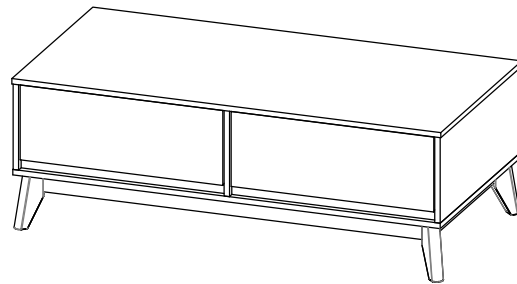


CODING
- 134100



ISO 9001:2015
Reg. No. 000435-1-MY-1-QMS

nuhoom.com

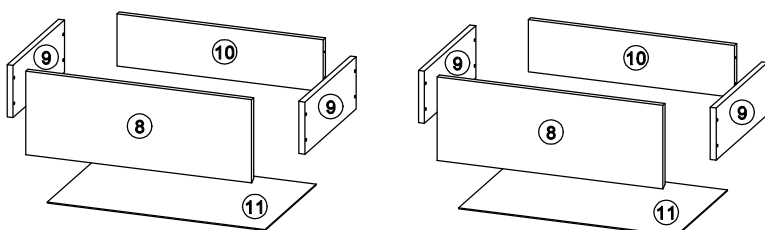
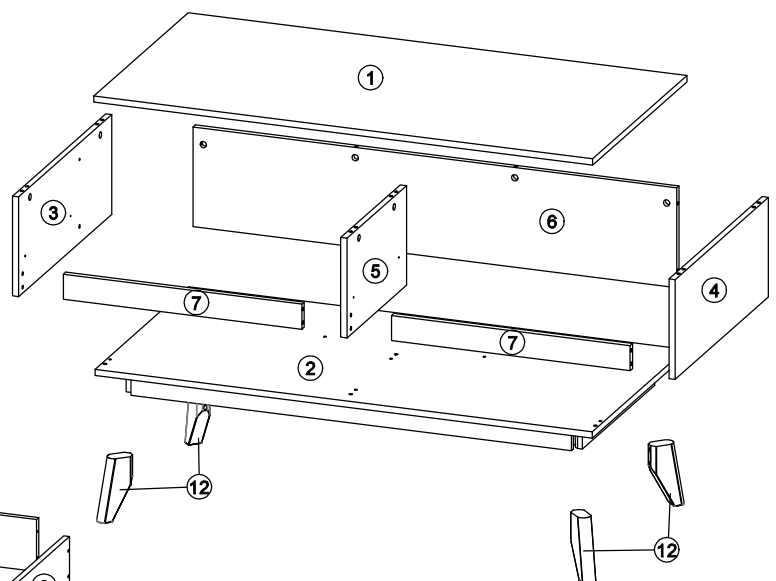
Read the instructions carefully. Remove all the wrappings, staples and straps from the carton. Refer to the hardware and furniture part list for guidance. Make sure that you have all the parts before you start assembling. Place all the wooden furniture parts on a clean, flat and soft surface, such as a carpet or rubbermat to prevent scratches.

CAUTION
KEEP ALL THE PARTS OUT OF CHILDREN'S REACH.

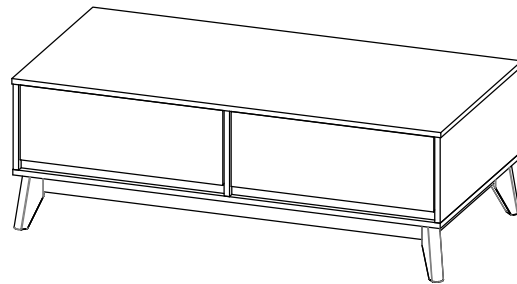
| PART LIST | | QTY |
|-----------|----------------|-------|
| 1 | TOP PANEL | 1 PC |
| 2 | BOTTOM PANEL | 1 PC |
| 3 | SIDE PANEL (L) | 1 PC |
| 4 | SIDE PANEL (R) | 1 PC |
| 5 | CENTER PANEL | 1 PC |
| 6 | MIDDLE PANEL | 1 PC |
| 7 | BONE PANEL | 2 PCS |
| 8 | DRAWER FRONT | 2 PCS |
| 9 | DRAWER SIDE | 4 PCS |
| 10 | DRAWER BACK | 2 PCS |
| 11 | DRAWER BOTTOM | 2 PCS |
| 12 | LEG | 4 PCS |

| HARDWARE | | | |
|----------|------------------------------|----------------------|--------|
| A | MINI FIX | A1 A2 A3 | 10 PCS |
| B | M8 X 30MM WOOD DOWEL | | 22 PCS |
| C | M6 X 50MM CSK CAP WOOD SCREW | | 8 PCS |
| D | 5/8 NAIL | | 16 PCS |
| E | ALLEN KEY M4 | | 1 PC |
| F | ONE HOLE L BRACKET (2MM) | | 4 PCS |
| G | M3.5 X 16MM C.B SCREW | | 32 PCS |
| H | M4 X 38MM C.B SCREW | | 16 PCS |
| I | 14" DRAWER SLIDE | I1 (L/R) I2 (L/R) | 2 SETS |
| J | JCBC Screw M6 x 70 | | 8 PCS |
| K | SPRING WASHER M6 | | 8 PCS |
| L | FLAT WASHER M6 | | 8 PCS |

| SELF-PREPARED TOOLS: Tools below are NOT included in package. | |
|---|--------|
| SCREWDRIVER | HAMMER |



CODING
- 134100

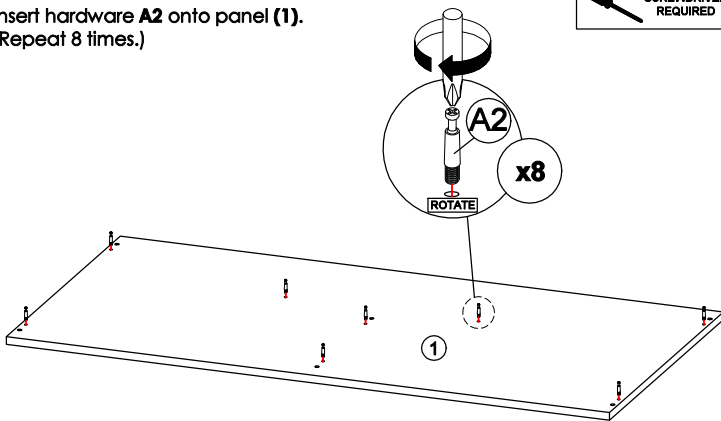


ISO 9001:2015
Reg. No. 000435-1-MY-1-QMS

nuhoom.com

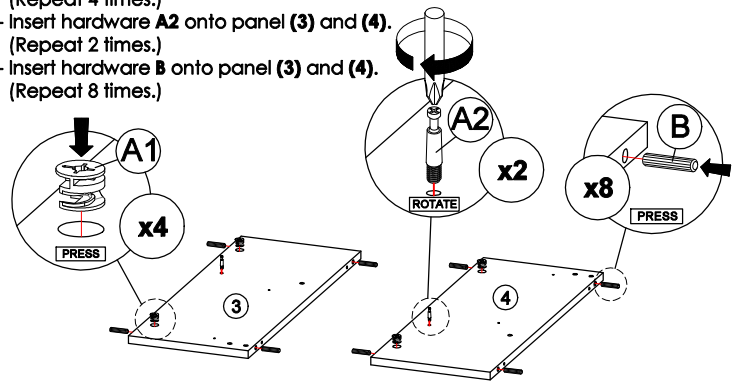
STEP 1

Insert hardware **A2** onto panel **(1)**.
(Repeat 8 times.)



STEP 2

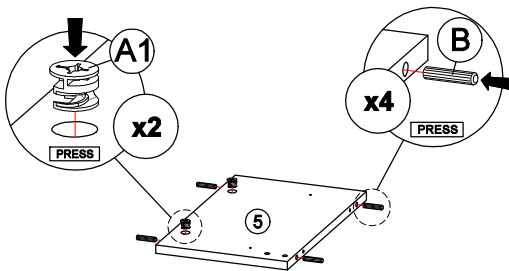
- Insert hardware **A1** onto panel **(3)** and **(4)**.
(Repeat 4 times.)
- Insert hardware **A2** onto panel **(3)** and **(4)**.
(Repeat 2 times.)
- Insert hardware **B** onto panel **(3)** and **(4)**.
(Repeat 8 times.)



* Ensure the arrows on hardware **A1** point towards mounting positions.

STEP 3

- Insert hardware **A1** onto panel **(5)**.
(Repeat 2 times.)
- Insert hardware **B** onto panel **(5)**.
(Repeat 4 times.)

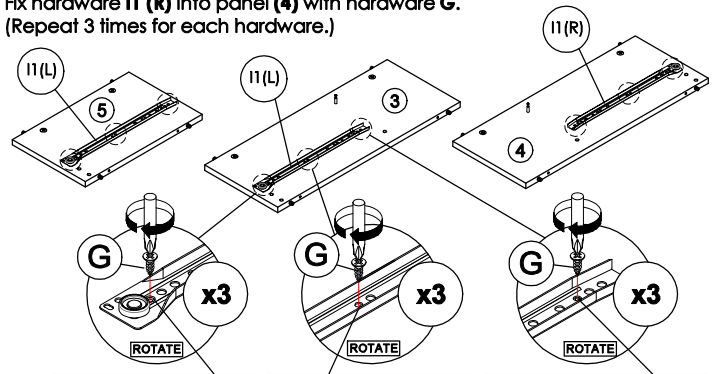


* Ensure the arrows on hardware **A1** point towards mounting positions.

STEP 4

STEP 4

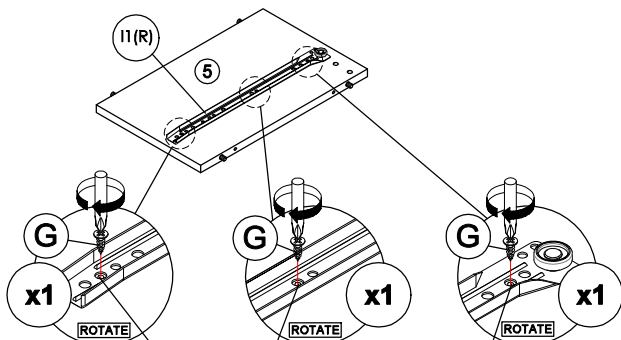
- Fix hardware **I1 (L)** into panel **(3)** and **(5)** with hardware **G**.
(Repeat 3 times for each hardware.)
- Fix hardware **I1 (R)** into panel **(4)** with hardware **G**.
(Repeat 3 times for each hardware.)



First hole from the edge. Small hole at the center. Third hole from the edge.

STEP 5

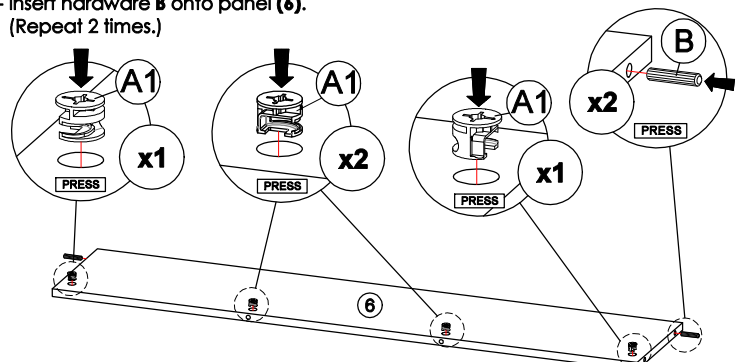
Fix hardware **I1 (R)** into panel **(5)** with hardware **G**.
(Repeat 3 times for each hardware.)



Second hole from the edge. Big hole at the center. Second hole from the edge.

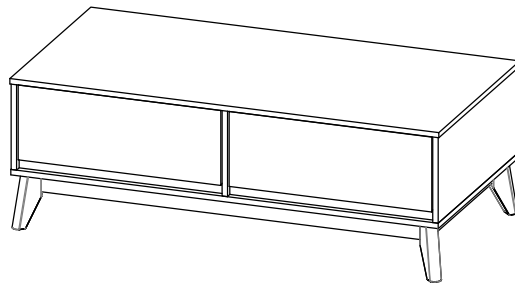
STEP 6

- Insert hardware **A1** onto panel **(6)**.
(Repeat 4 times.)
- Insert hardware **B** onto panel **(6)**.
(Repeat 2 times.)



* Ensure the arrows on hardware **A1** point towards mounting positions.

CODING
- 134100

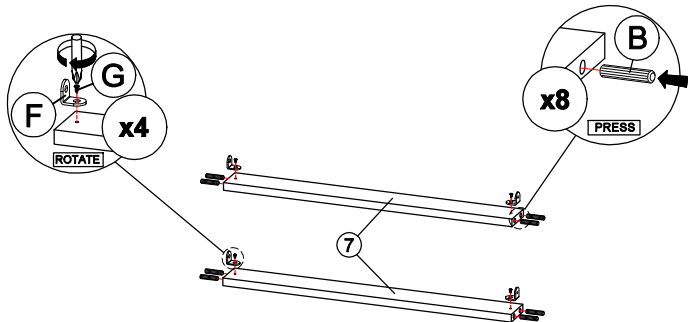


ISO 9001:2015
Reg. No. 000435-1-MY-1-QMS

nuhoom.com

STEP 7

- Assemble hardware **F** to panel **(7)** with hardware **G**. (Repeat 2 times on each panel.)
- Insert hardware **B** onto panel **(7)**. (Repeat 4 times on each panel.)

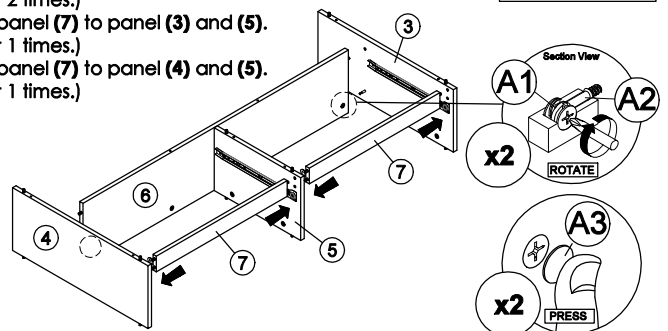


STEP 8

- Attach panel **(6)** to panel **(3)** and **(4)**.
- Insert all hardware **A2** into **A1**.
- Rotate all **A1** until tight. (Repeat 2 times.)
- Apply **A3** onto all **A1**. (Repeat 1 times.)
- Attach panel **(7)** to panel **(3)** and **(5)**. (Repeat 1 times.)
- Attach panel **(7)** to panel **(4)** and **(5)**. (Repeat 1 times.)



OR



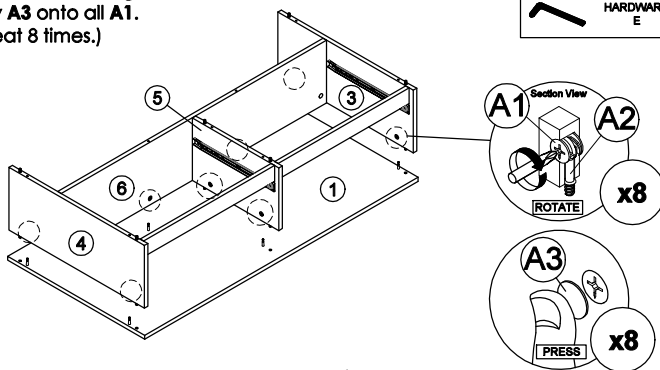
* In this step hardware **A1**, **A2** and **B** are pre-inserted.

STEP 9

- Attach panel **(3)**, **(4)**, **(5)** and **(6)** to panel **(1)**.
- Insert all hardware **A2** into **A1**.
- Rotate all **A1** until tight.
- Apply **A3** onto all **A1**. (Repeat 8 times.)



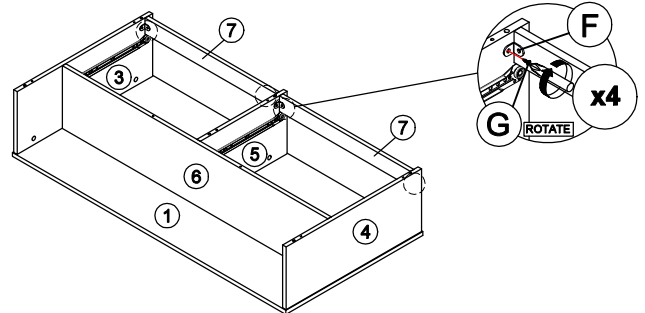
OR



* In this step hardware **A1**, **A2** and **B** are pre-inserted.

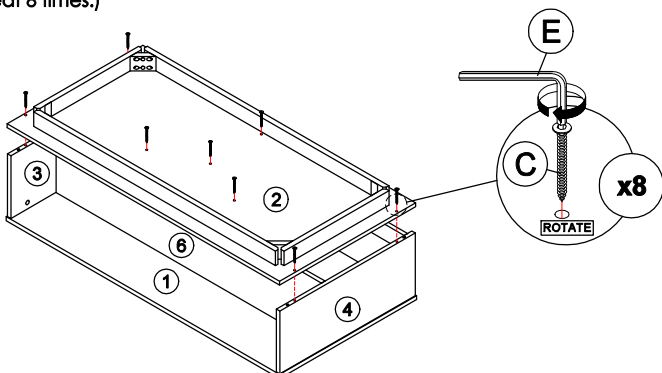
STEP 10

- Assemble hardware **F** on panel **(7)** to panel **(3)** and **(5)** by using hardware **G**.
- Assemble hardware **F** on panel **(7)** to panel **(4)** and **(5)** by using hardware **G**. (Repeat 1 times on each side panel.)



STEP 11

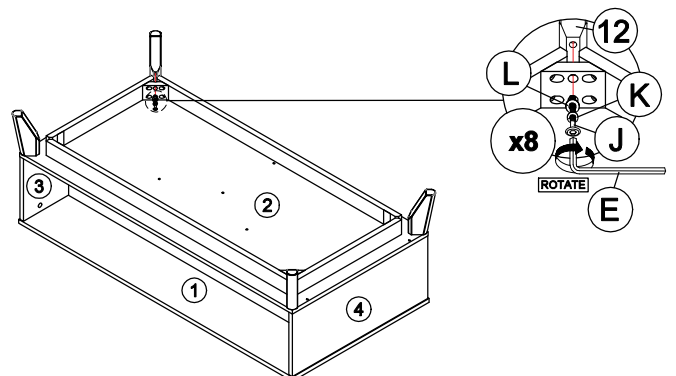
- Connect panel **(2)** to panel **(3)**, **(4)**, **(5)** and **(6)** by using hardware **C** and **E**. (Repeat 8 times.)



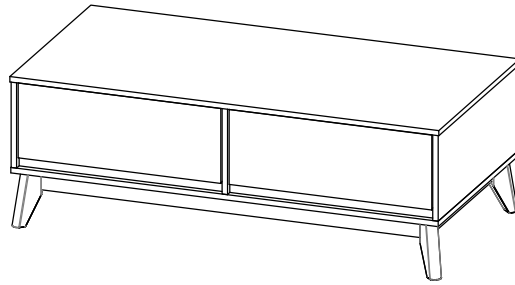
* In this step hardware **B** are pre-inserted.

STEP 12

- Assemble part **12** into panel **(2)** by using hardware **E**, **J**, **K** and **L**. (Repeat 2 times for each Leg.)



CODING
- 134100



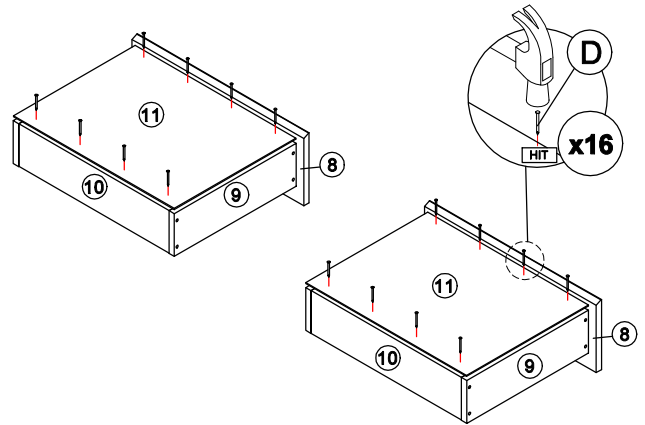
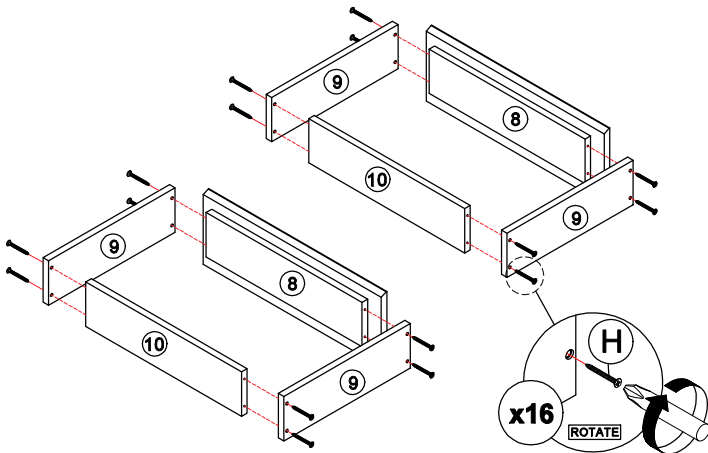
ISO 9001:2015
Reg. No. 000435-1-MY-1-QMS

nuhoom.com

STEP 13
Assemble panel (9) with panel (8) and (10) by using hardware H.
(Repeat 8 times for each drawer.)



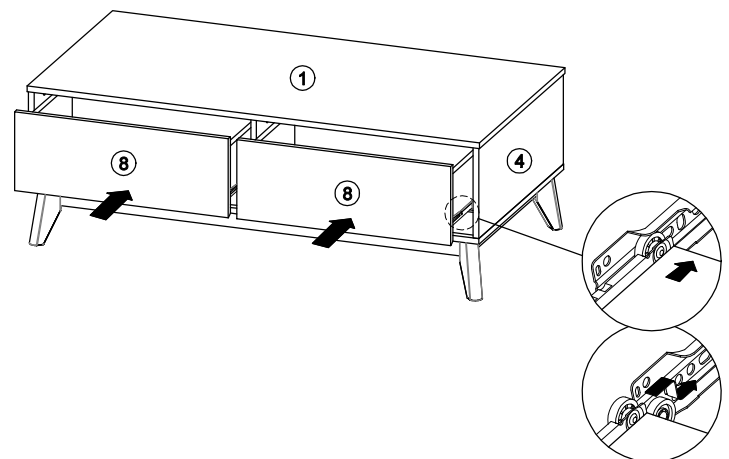
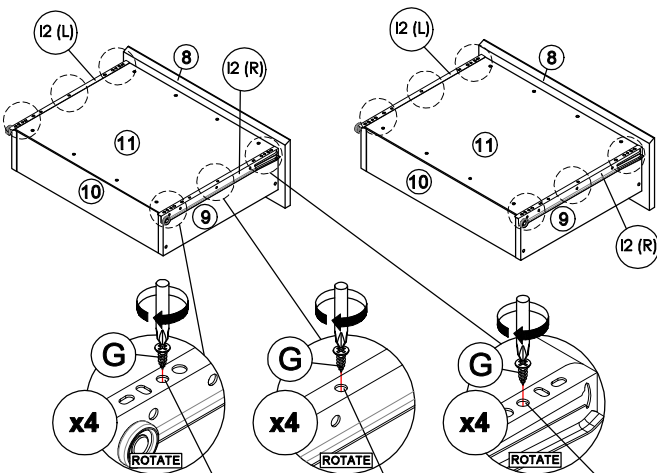
STEP 14
Assemble panel (11) to entire body with hardware D.
(Repeat 8 times for each drawer.)



STEP 15
Assemble hardware I2 (L/R) to panel (11) by using hardware G.
(Repeat 3 times for each hardware.)



STEP 16
Put all the drawer in place along the drawer sides.



*Hardware I2 (L/R) shall be leaning against panel (8) when assembling.