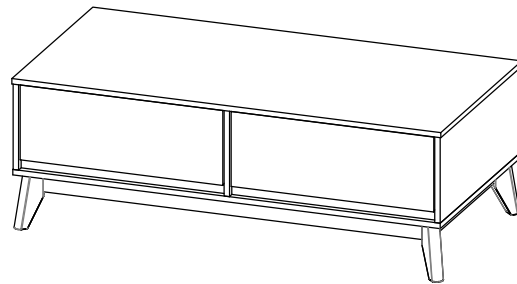


**CODING**  
- 134099



ISO 9001:2015  
Reg. No. 07035-1-MY-1-QMS

**nuhoom.com**

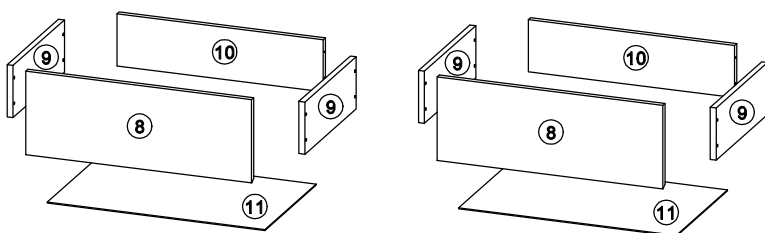
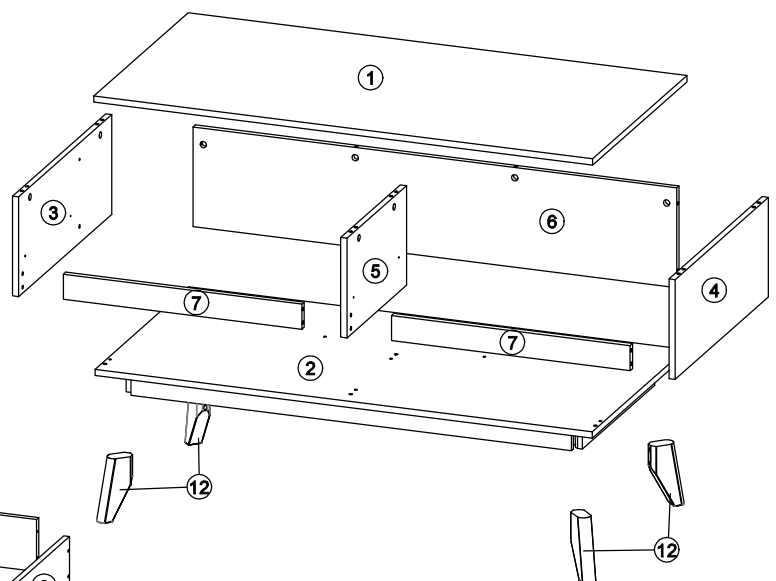
Read the instructions carefully. Remove all the wrappings, staples and straps from the carton. Refer to the hardware and furniture part list for guidance. Make sure that you have all the parts before you start assembling. Place all the wooden furniture parts on a clean, flat and soft surface, such as a carpet or rubbermat to prevent scratches.

CAUTION  
KEEP ALL THE PARTS OUT OF CHILDREN'S REACH.

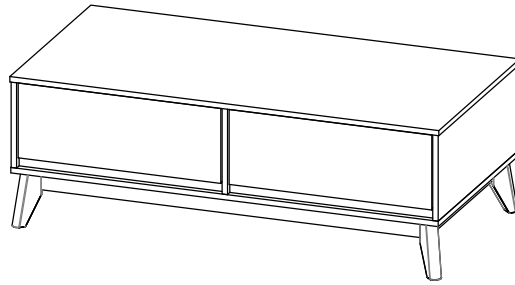
PART LIST		QTY
1	TOP PANEL	1 PC
2	BOTTOM PANEL	1 PC
3	SIDE PANEL (L)	1 PC
4	SIDE PANEL (R)	1 PC
5	CENTER PANEL	1 PC
6	MIDDLE PANEL	1 PC
7	BONE PANEL	2 PCS
8	DRAWER FRONT	2 PCS
9	DRAWER SIDE	4 PCS
10	DRAWER BACK	2 PCS
11	DRAWER BOTTOM	2 PCS
12	LEG	4 PCS

HARDWARE			
A	MINI FIX	A1  A2  A3	10 PCS
B	M8 X 30MM WOOD DOWEL		22 PCS
C	M6 X 50MM CSK CAP WOOD SCREW		8 PCS
D	5/8 NAIL		16 PCS
E	ALLEN KEY M4		1 PC
F	ONE HOLE L BRACKET (2MM)		4 PCS
G	M3.5 X 16MM C.B SCREW		32 PCS
H	M4 X 38MM C.B SCREW		16 PCS
I	14" DRAWER SLIDE	I1 (L/R) I2 (L/R)	2 SETS
J	JCBC Screw M6 x 70		8 PCS
K	SPRING WASHER M6		8 PCS
L	FLAT WASHER M6		8 PCS

SELF-PREPARED TOOLS: Tools below are NOT included in package.	
SCREWDRIVER	HAMMER



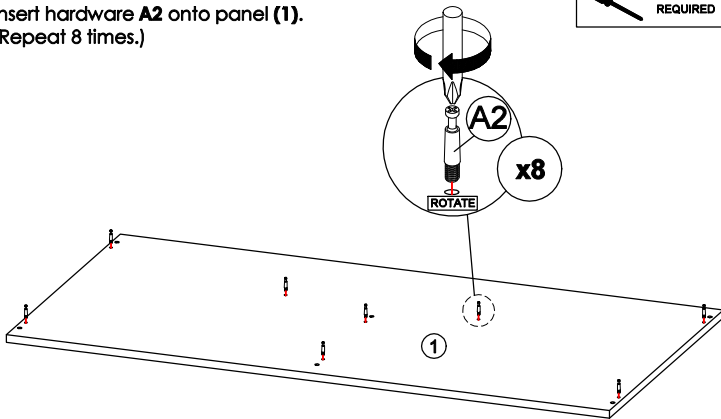
**CODING**  
- 134099



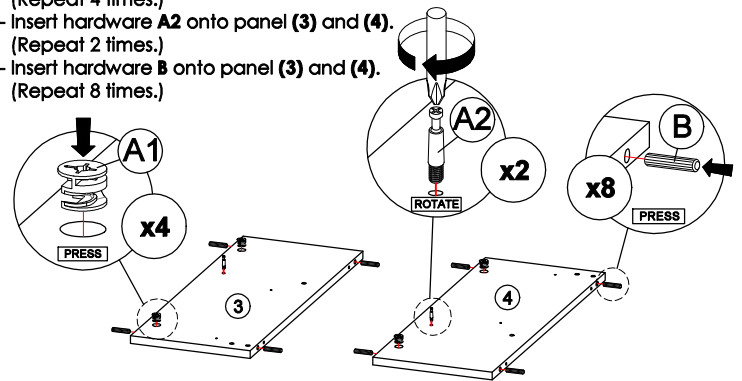
ISO 9001:2015  
Reg. No. 000435-1-MY-1-QMS

nuhoom.com

**STEP 1**  
Insert hardware **A2** onto panel **(1)**.  
(Repeat 8 times.)

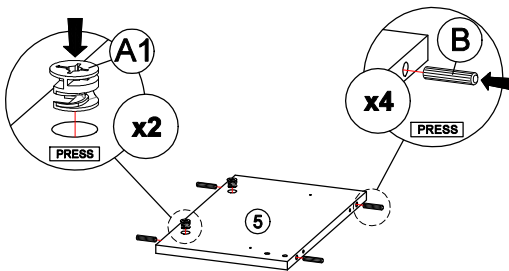


**STEP 2**  
- Insert hardware **A1** onto panel **(3)** and **(4)**.  
(Repeat 4 times.)  
- Insert hardware **A2** onto panel **(3)** and **(4)**.  
(Repeat 2 times.)  
- Insert hardware **B** onto panel **(3)** and **(4)**.  
(Repeat 8 times.)



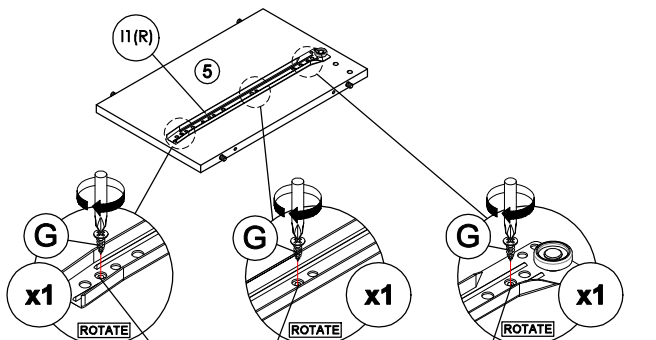
\* Ensure the arrows on hardware **A1** point towards mounting positions.

**STEP 3**  
- Insert hardware **A1** onto panel **(5)**.  
(Repeat 2 times.)  
- Insert hardware **B** onto panel **(5)**.  
(Repeat 4 times.)



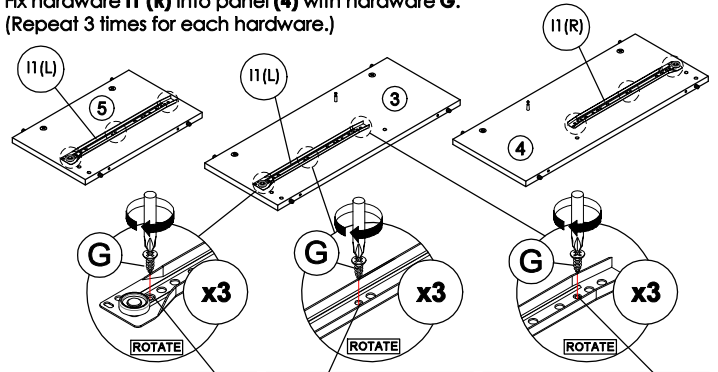
\* Ensure the arrows on hardware **A1** point towards mounting positions.

**STEP 5**  
Fix hardware **I1 (R)** into panel **(5)** with hardware **G**.  
(Repeat 3 times for each hardware.)



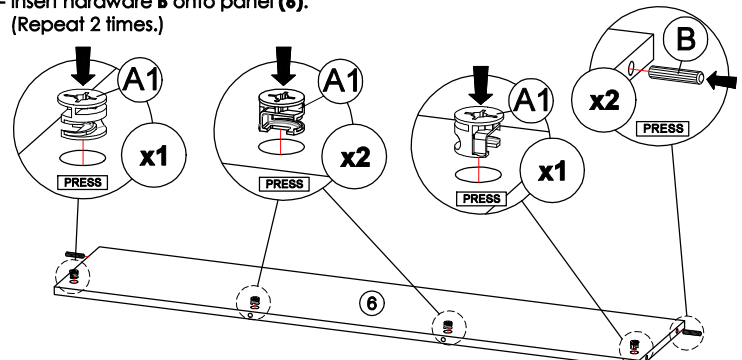
Second hole from the edge. Big hole at the center. Second hole from the edge.

**STEP 4**  
- Fix hardware **I1 (L)** into panel **(3)** and **(5)** with hardware **G**.  
(Repeat 3 times for each hardware.)  
- Fix hardware **I1 (R)** into panel **(4)** with hardware **G**.  
(Repeat 3 times for each hardware.)



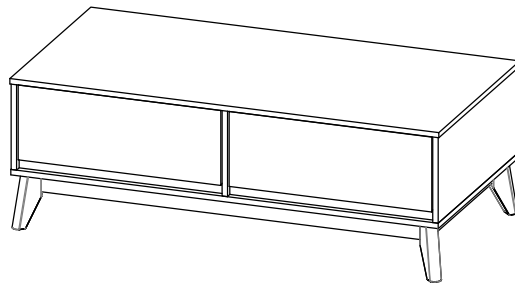
First hole from the edge. Small hole at the center. Third hole from the edge.

**STEP 6**  
- Insert hardware **A1** onto panel **(6)**.  
(Repeat 4 times.)  
- Insert hardware **B** onto panel **(6)**.  
(Repeat 2 times.)



\* Ensure the arrows on hardware **A1** point towards mounting positions.

**CODING**  
- 134099

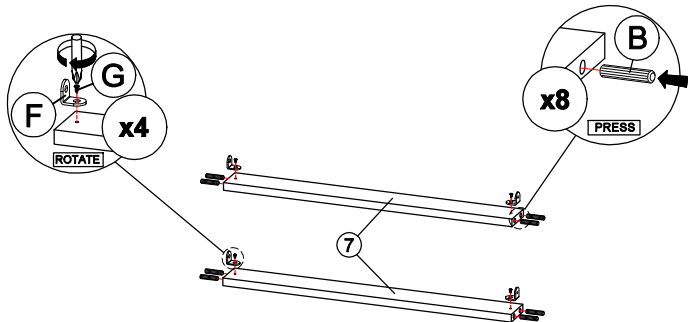


ISO 9001:2015  
Reg. No. 000435-1-MY-1-QMS

nuhoom.com

**STEP 7**

- Assemble hardware **F** to panel **(7)** with hardware **G**.  
(Repeat 2 times on each panel.)
- Insert hardware **B** onto panel **(7)**.  
(Repeat 4 times on each panel.)

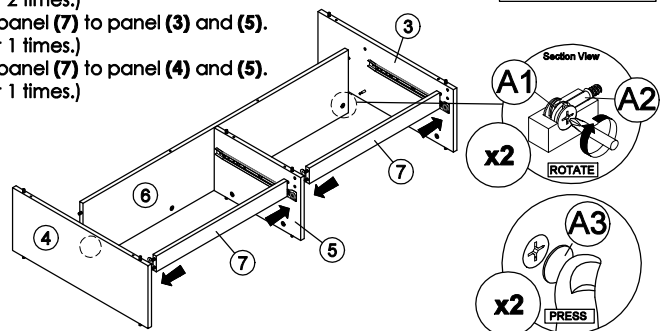


**STEP 8**

- Attach panel **(6)** to panel **(3)** and **(4)**.
- Insert all hardware **A2** into **A1**.
- Rotate all **A1** until tight.  
(Repeat 2 times.)
- Apply **A3** onto all **A1**.  
(Repeat 1 times.)
- Attach panel **(7)** to panel **(3)** and **(5)**.  
(Repeat 1 times.)
- Attach panel **(7)** to panel **(4)** and **(5)**.  
(Repeat 1 times.)



OR  
HARDWARE **E**



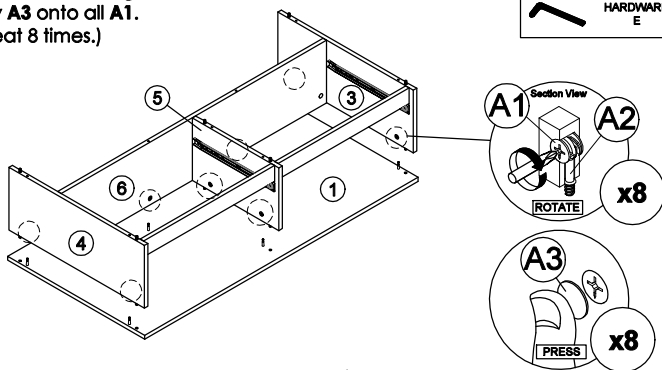
\* In this step hardware **A1**, **A2** and **B** are pre-inserted.

**STEP 9**

- Attach panel **(3)**, **(4)**, **(5)** and **(6)** to panel **(1)**.
- Insert all hardware **A2** into **A1**.
- Rotate all **A1** until tight.
- Apply **A3** onto all **A1**.  
(Repeat 8 times.)



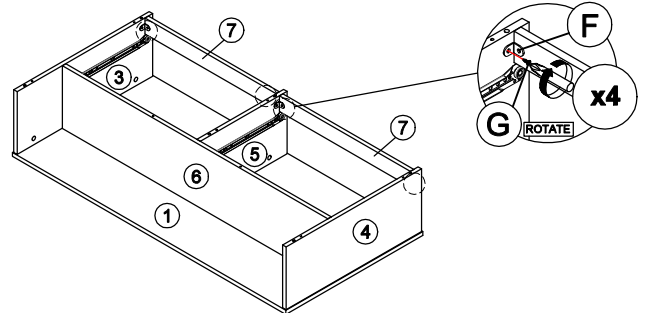
OR  
HARDWARE **E**



\* In this step hardware **A1**, **A2** and **B** are pre-inserted.

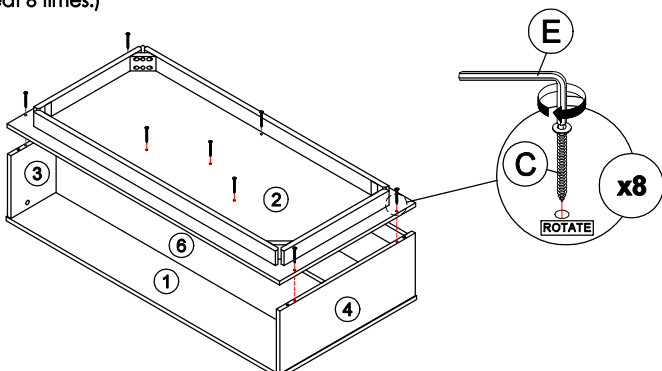
**STEP 10**

- Assemble hardware **F** on panel **(7)** to panel **(3)** and **(5)** by using hardware **G**.
- Assemble hardware **F** on panel **(7)** to panel **(4)** and **(5)** by using hardware **G**.  
(Repeat 1 times on each side panel.)



**STEP 11**

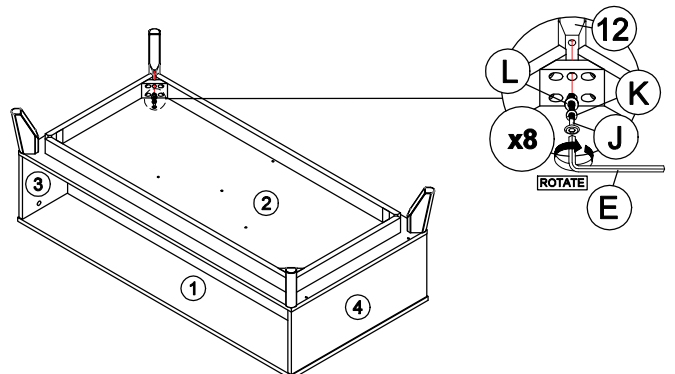
- Connect panel **(2)** to panel **(3)**, **(4)**, **(5)** and **(6)** by using hardware **C** and **E**.  
(Repeat 8 times.)



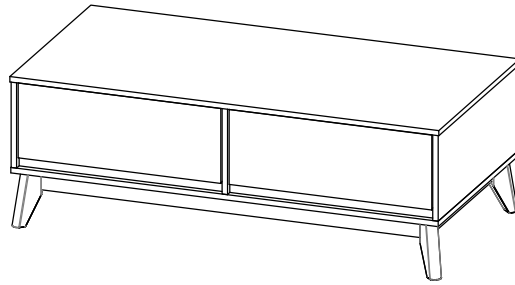
\* In this step hardware **B** are pre-inserted.

**STEP 12**

- Assemble part **12** into panel **(2)** by using hardware **E**, **J**, **K** and **L**.  
(Repeat 2 times for each Leg.)



**CODING**  
- 134099



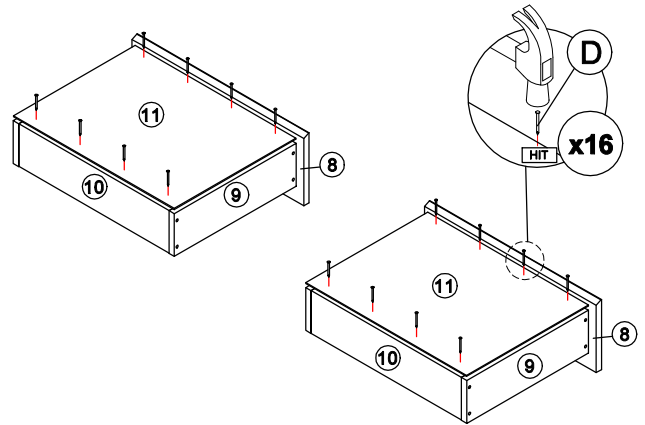
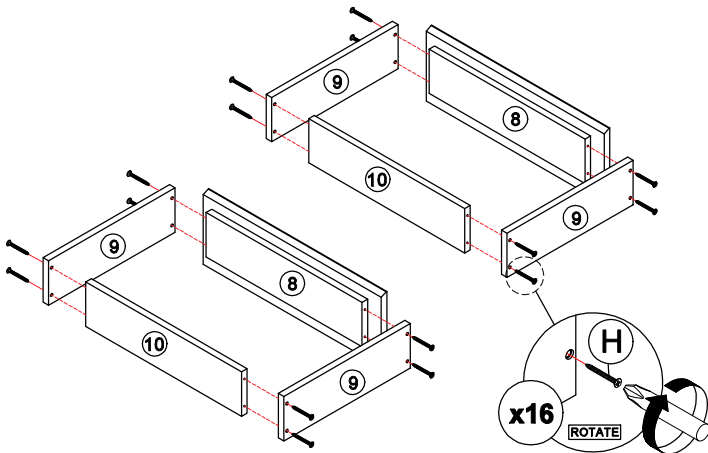
ISO 9001:2015  
Reg. No. 000435-1-MY-1-QMS

nuhoom.com

**STEP 13**  
Assemble panel (9) with panel (8) and (10) by using hardware H.  
(Repeat 8 times for each drawer.)



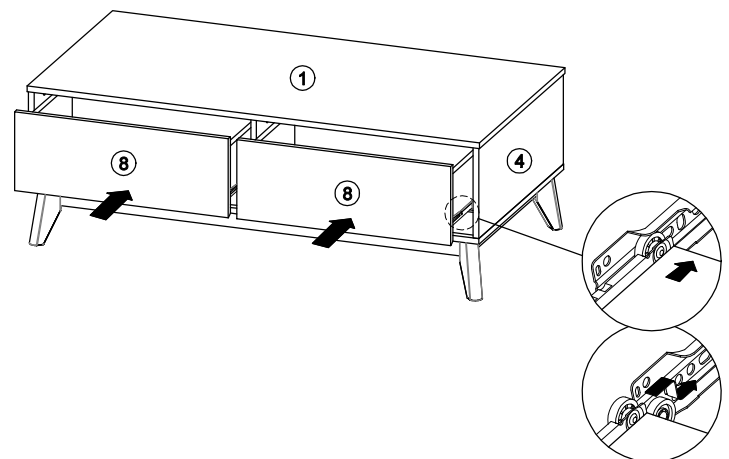
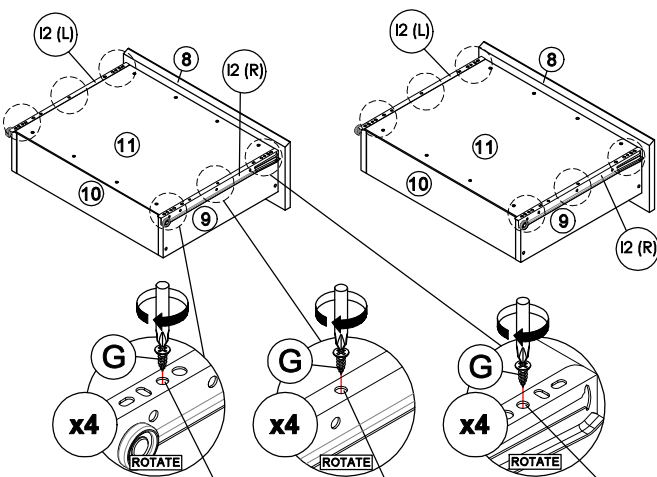
**STEP 14**  
Assemble panel (11) to entire body with hardware D.  
(Repeat 8 times for each drawer.)



**STEP 15**  
Assemble hardware I2 (L/R) to panel (11) by using hardware G.  
(Repeat 3 times for each hardware.)



**STEP 16**  
Put all the drawer in place along the drawer sides.



\*Hardware I2 (L/R) shall be leaning against panel (8) when assembling.