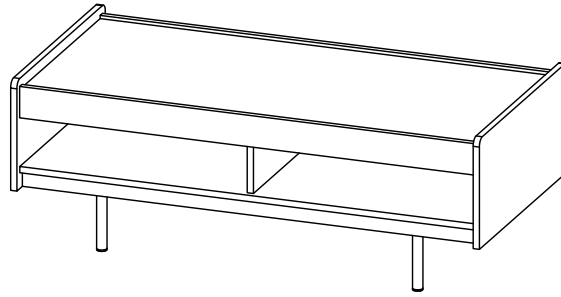


CODING  
- 134094



ISO 9001:2015  
Reg. No. 00905-1-MKT-1-QMS

nuhoom.com

Read the instructions carefully. Remove all the wrappings , staples and straps from the carton. Refer to the hardware and furniture part list for guidance. Make sure that you have all the parts before you start assembling. Place all the wooden furniture parts on a clean, flat and soft surface, such as a carpet or rubbermat to prevent scratches.

CAUTION  
KEEP ALL THE PARTS OUT OF CHILDREN'S REACH.

HARDWARE				
A	MINI FIX	A1  A2  A3	18 SETS	
B	M8 X 30MM WOOD DOWEL		22 PCS	
C	M6 X 50MM CSK CAP WOOD SCREW		2 PCS	
D	ALLEN KEY M4		1 PC	
E	M3.5 X 16MM C.B SCREW		8 PCS	
F	M4 X 32MM C.B SCREW		8 PCS	
G	JCBC Screw M6 x 20MM		16 PCS	
H	JCBC SCREW M6 X 50MM		8 PCS	
I	ONE HOLE L BRACKET (2MM)		4 PCS	

PART LIST		QTY
1	TOP PANEL	1 PC
2	BOTTOM PANEL	1 PC
3	SIDE PANEL	2 PCS
4	CENTER PANEL	1 PC
5	MIDDLE PANEL	2 PCS
6	BONE PANEL	2 PCS
7	METAL APRON	1 PC
8	METAL LEG	4 PCS

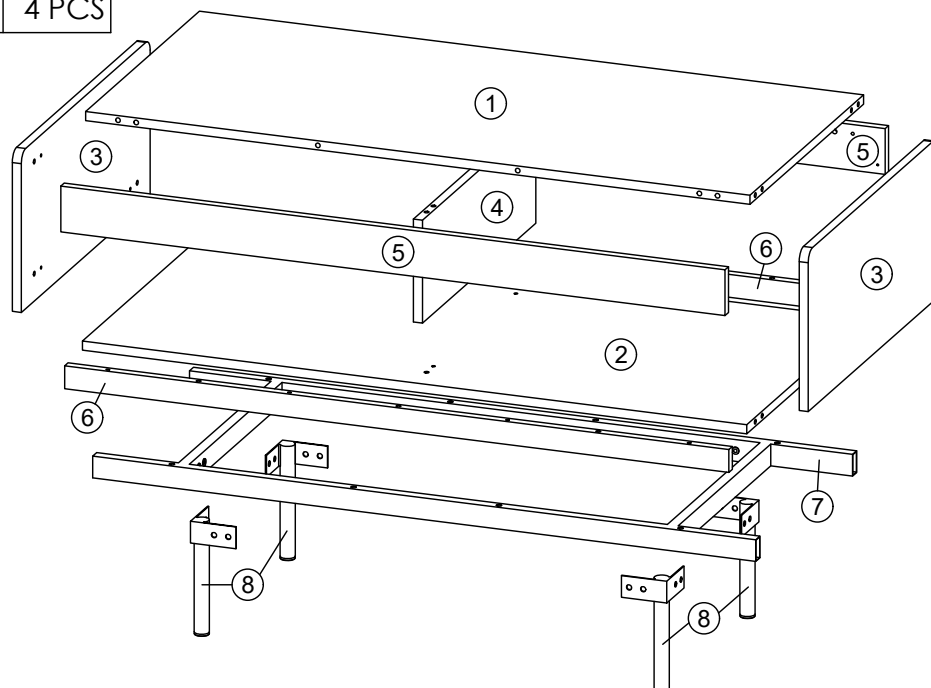
SELF-PREPARED TOOLS: Tools below are NOT included in package.



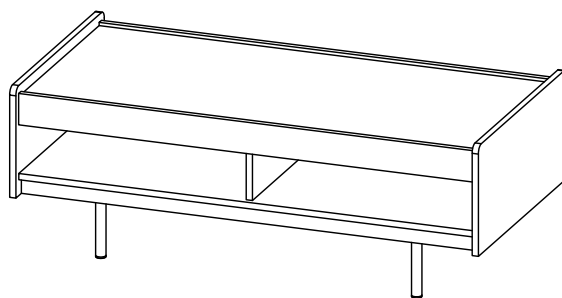
SCREWDRIVER



HAMMER

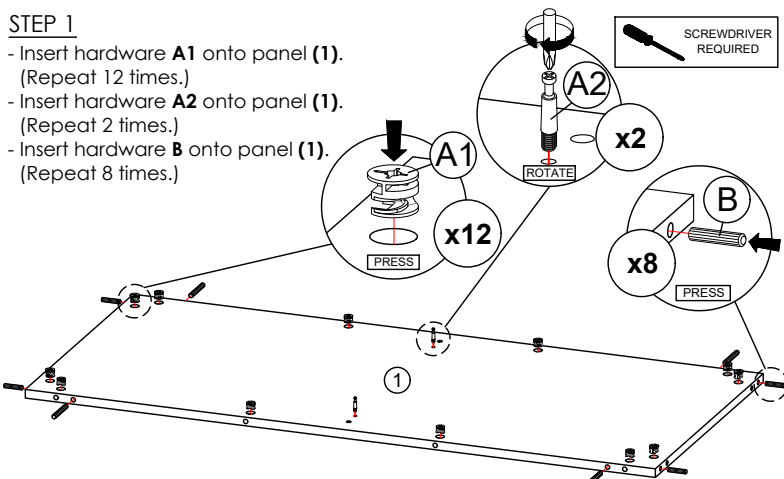


CODING  
- 134094

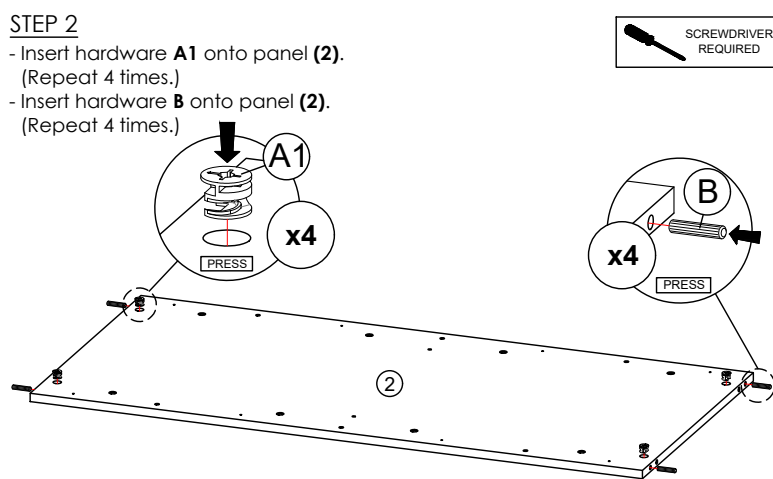


ISO 9001:2015  
Reg. No. 00905-1-MIT-1-QMS

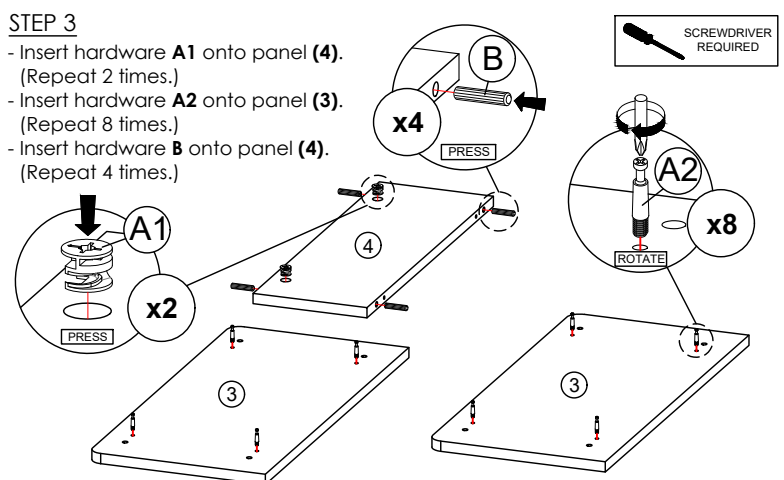
nuhoom.com



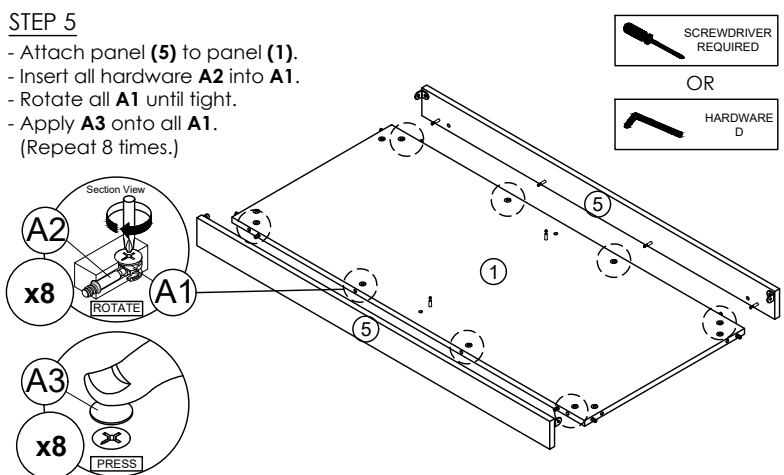
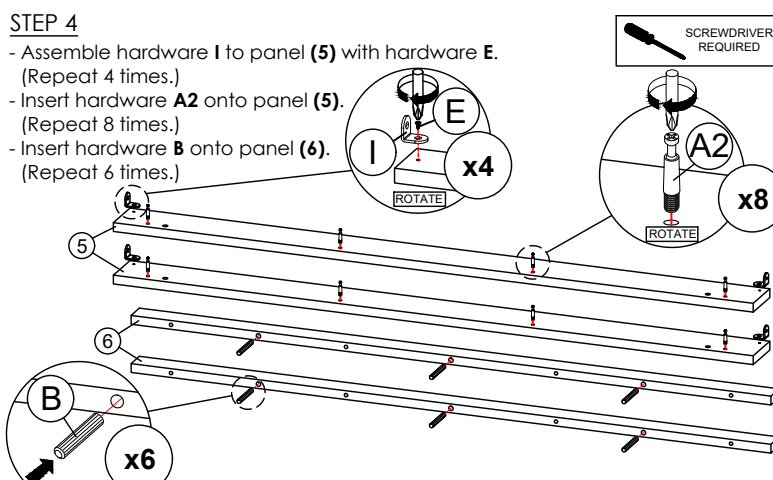
\* Ensure the arrows on hardware **A1** point towards mounting positions.



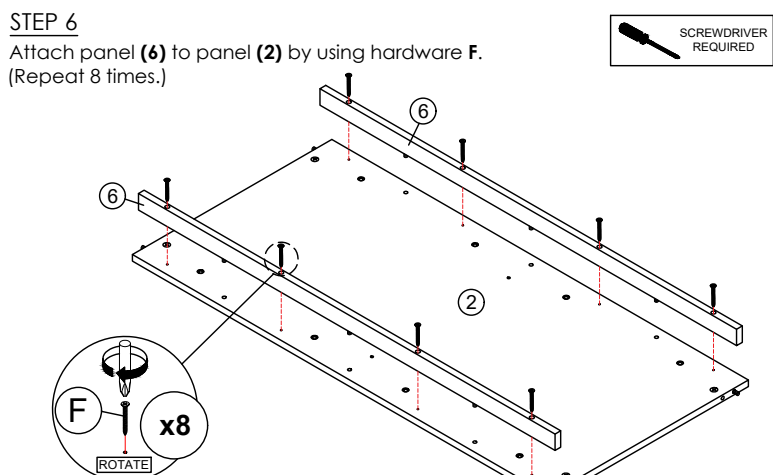
\* Ensure the arrows on hardware **A1** point towards mounting positions.



\* Ensure the arrows on hardware **A1** point towards mounting positions.

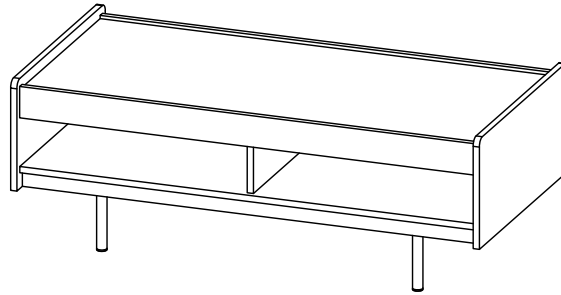


\* In this step hardware **A1**, **A2** and **B** are pre-inserted.



\* In this step hardware **B** are pre-inserted.

CODING  
- 134094

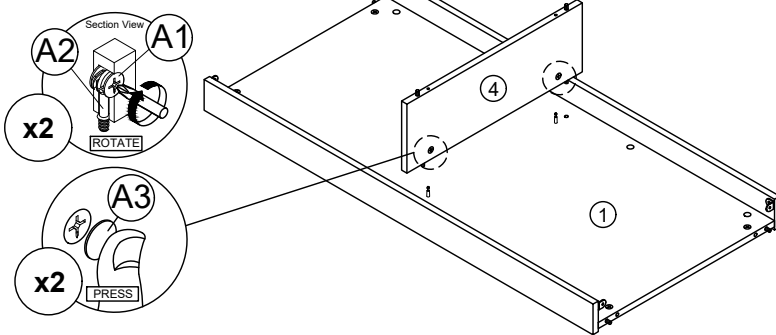


ISO 9001:2015  
Reg. No. 009-05-1-MT-1-QMS

nuhoom.com

## STEP 7

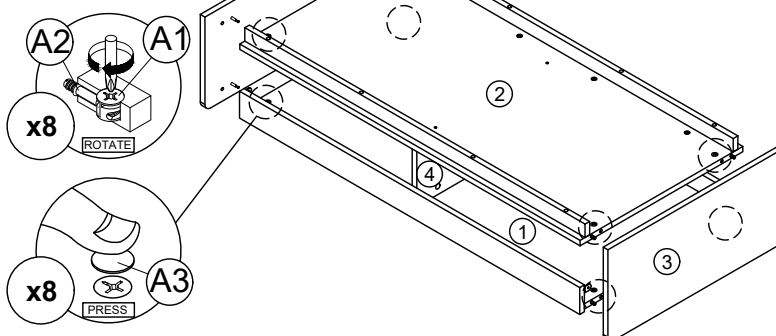
- Attach panel (4) to panel (1).
  - Insert all hardware A2 into A1.
  - Rotate all A1 until tight.
  - Apply A3 onto all A1.
- (Repeat 2 times.)



\* In this step hardware A1, A2 and B are pre-inserted.

## STEP 9

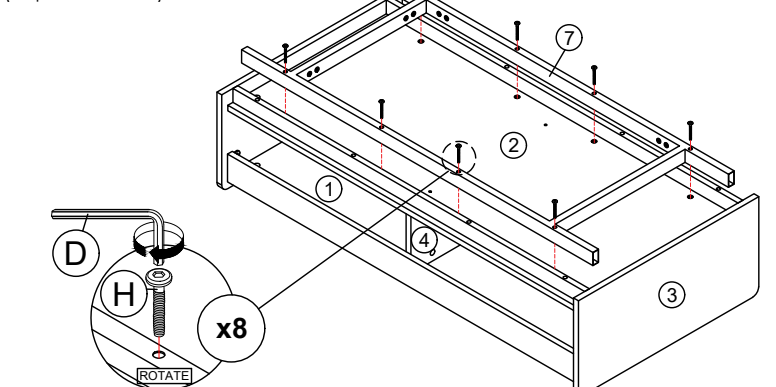
- Attach panel (3) to panel (1) and (2).
  - Insert all hardware A2 into A1.
  - Rotate all A1 until tight.
  - Apply A3 onto all A1.
- (Repeat 8 times.)



\* In this step hardware A1, A2 and B are pre-inserted.

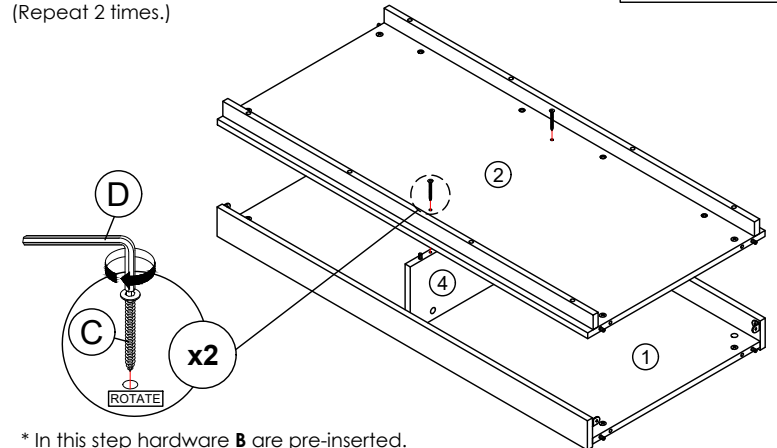
## STEP 11

- Connect Metal Apron (7) to panel (2) by using hardware D and H.
- (Repeat 8 times.)



## STEP 8

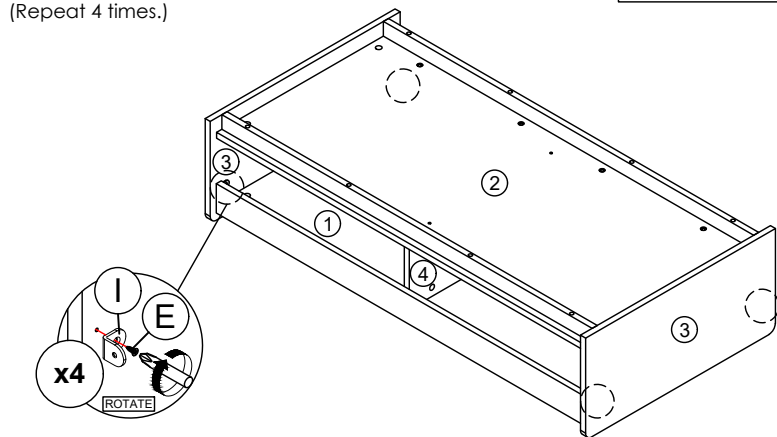
- Connect panel (2) to panel (4) by using hardware C and D.
- (Repeat 2 times.)



\* In this step hardware B are pre-inserted.

## STEP 10

- Assemble hardware I to panel (3) with hardware E.
- (Repeat 4 times.)



## STEP 12

- Connect Metal Leg (8) to Metal Apron (7) by using hardware D and G.
- (Repeat 16 times.)

