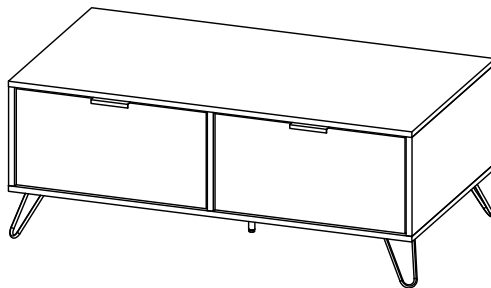


CODING

- 133082

ISO 9001:2015
Reg. No. 00705-1-MT-1-QMS



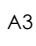




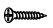



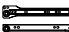


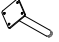
nuhoom.com

Read the instructions carefully. Remove all the wrappings, staples and straps from the carton. Refer to the hardware and furniture part list for guidance. Make sure that you have all the parts before you start assembling. Place all the wooden furniture parts on a clean, flat and soft surface, such as a carpet or rubbermat to prevent scratches.

CAUTION

KEEP ALL THE PARTS OUT OF CHILDREN'S REACH.

HARDWARE

HARDWARE				
A	MINI FIX	A1  A2  A3 	12 SETS	
B	M8 X 30MM WOOD DOWEL		18 PCS	
C	M6 X 50MM CSK CAP WOOD SCREW		10 PCS	
D	ALLEN KEY M4		1 PC	
E	M3 X 12MM C.B SCREW		8 PCS	
F	M3.5 X 16MM C.B SCREW		68 PCS	
G	M4 X 38MM C.B SCREW		32 PCS	
H	5/8 NAIL		32 PCS	
I	HANDLE EM 0071		4 PCS	
J	10" DRAWER SLIDE	J1 (L/R)  J2 (L/R) 	4 SETS	
K	METAL LEG 90 x 90 x 10 x H145MM		4 PCS	
L	METAL LEG 50 x 50 x H140MM (CENTER)		1 PC	

PART LIST		QTY
1	TOP PANEL	1 PC
2	BOTTOM PANEL	1 PC
3	SIDE PANEL	2 PCS
4	CENTER PANEL	2 PCS
5	MIDDLE PANEL	1 PC
6	DRAWER FRONT	4 PCS
7	DRAWER SIDE	8 PCS
8	DRAWER BACK	4 PCS
9	DRAWER BOTTOM	4 PCS

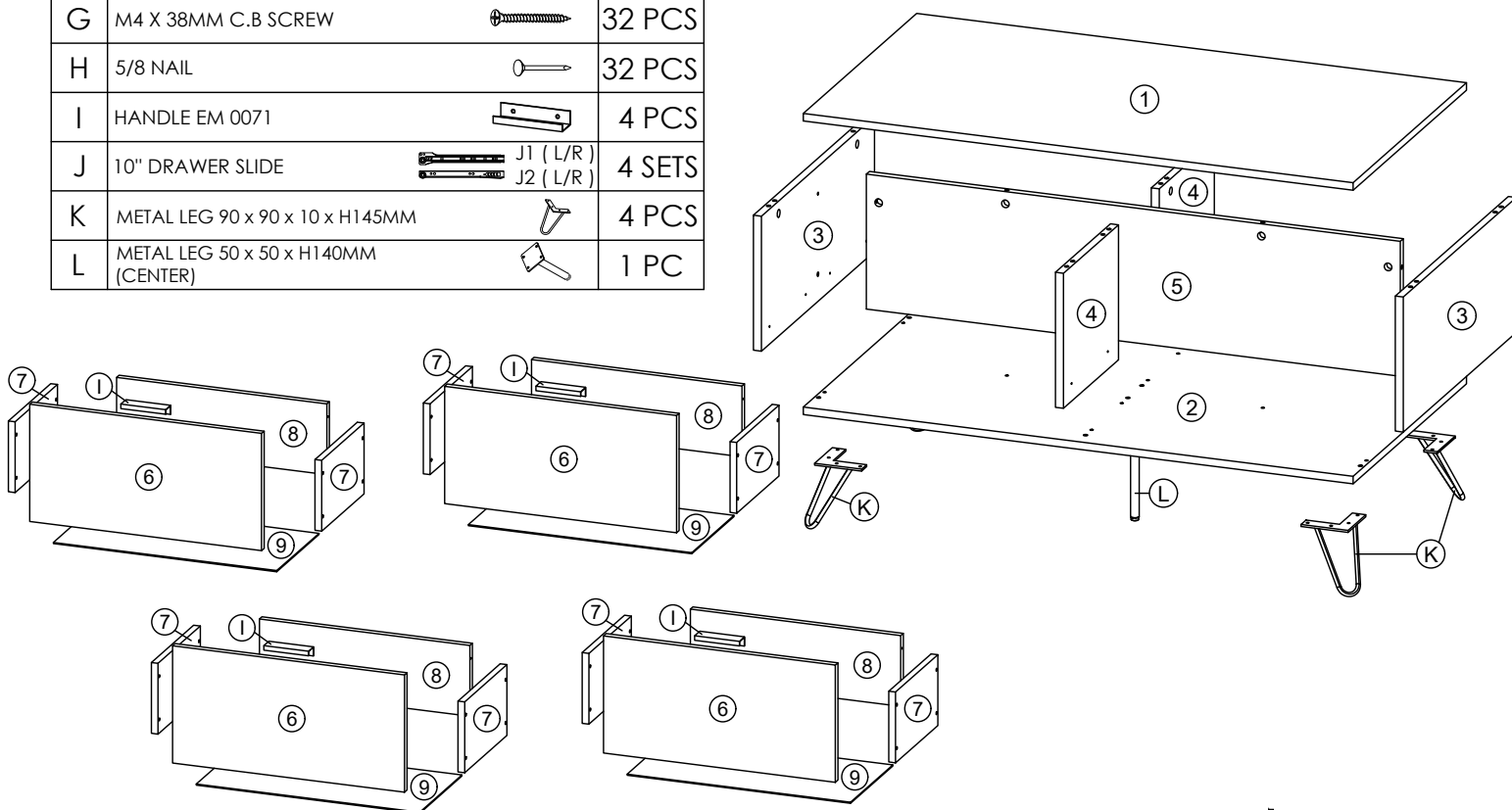
SELF-PREPARED TOOLS: Tools below are NOT included in package.



SCREWDRIVER

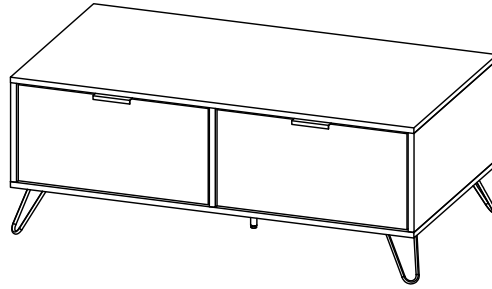


HAMMER



CODING

- 133082

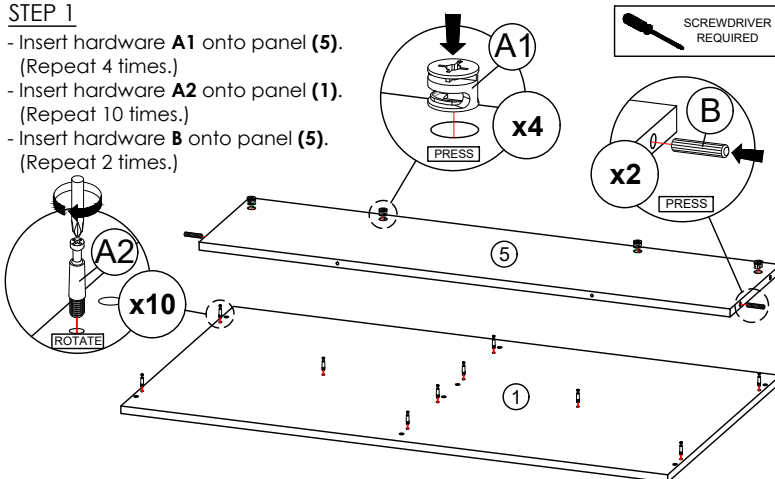


ISO 9001:2015
Reg. No. 00705-1-2017-1-QMS

nuhoom.com

STEP 1

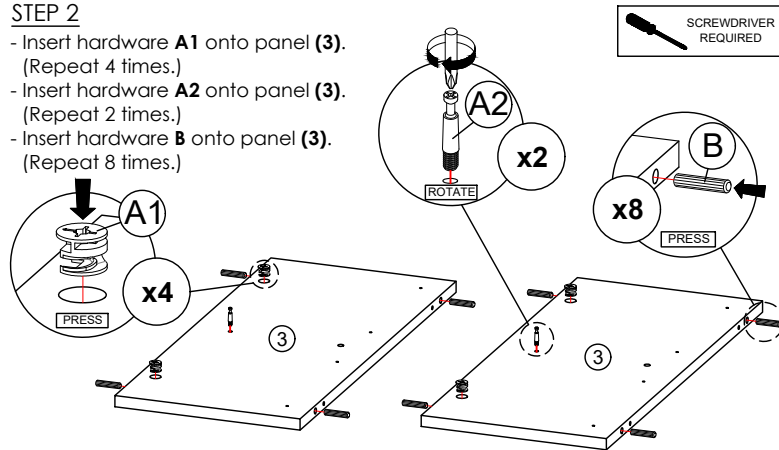
- Insert hardware **A1** onto panel (5).
(Repeat 4 times.)
- Insert hardware **A2** onto panel (1).
(Repeat 10 times.)
- Insert hardware **B** onto panel (5).
(Repeat 2 times.)



SCREWDRIVER
REQUIRED

STEP 2

- Insert hardware **A1** onto panel (3).
(Repeat 4 times.)
- Insert hardware **A2** onto panel (3).
(Repeat 2 times.)
- Insert hardware **B** onto panel (3).
(Repeat 8 times.)



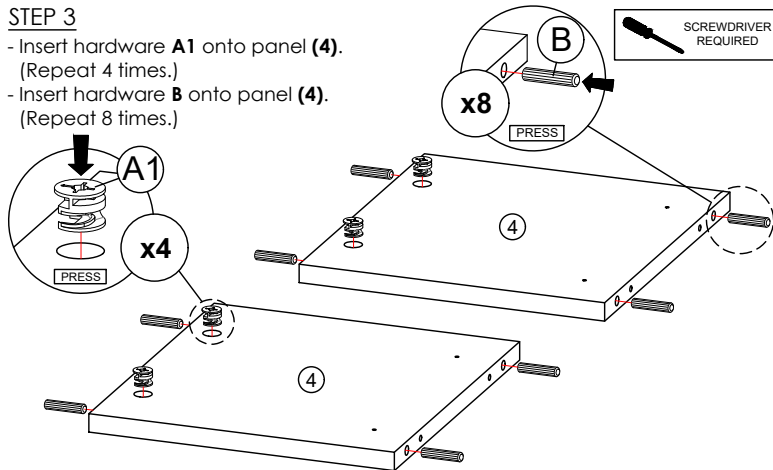
SCREWDRIVER
REQUIRED

* Ensure the arrows on hardware **A1** point towards mounting positions.

* Ensure the arrows on hardware **A1** point towards mounting positions.

STEP 3

- Insert hardware **A1** onto panel (4).
(Repeat 4 times.)
- Insert hardware **B** onto panel (4).
(Repeat 8 times.)

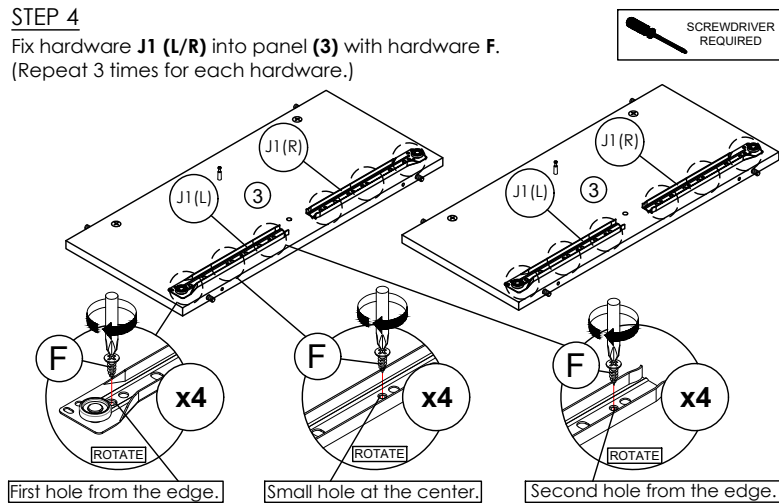


SCREWDRIVER
REQUIRED

* Ensure the arrows on hardware **A1** point towards mounting positions.

STEP 4

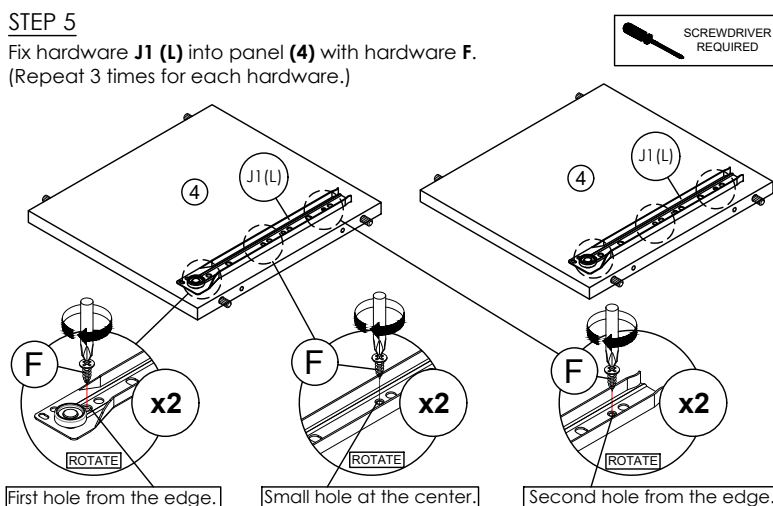
- Fix hardware **J1 (L/R)** into panel (3) with hardware **F**.
(Repeat 3 times for each hardware.)



SCREWDRIVER
REQUIRED

STEP 5

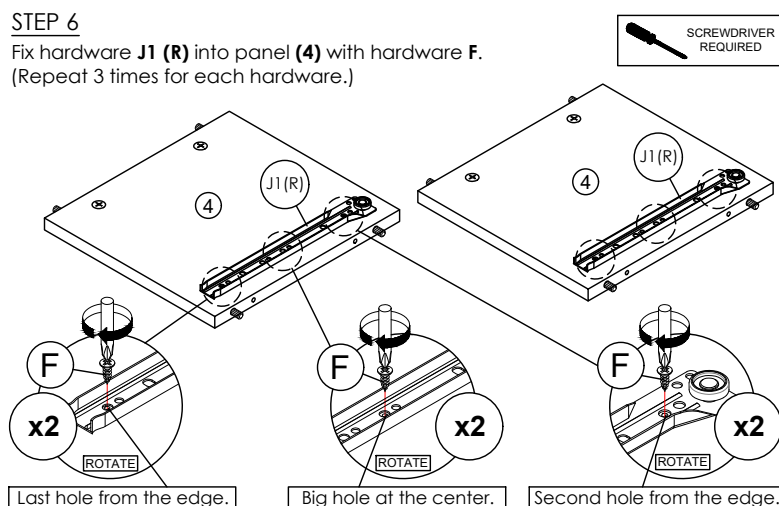
- Fix hardware **J1 (L)** into panel (4) with hardware **F**.
(Repeat 3 times for each hardware.)



SCREWDRIVER
REQUIRED

STEP 6

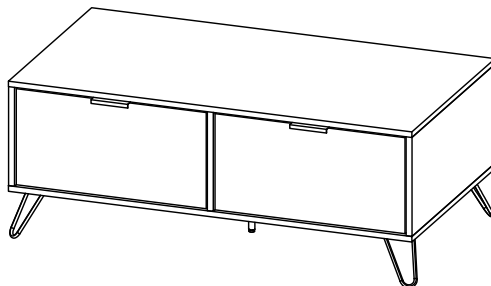
- Fix hardware **J1 (R)** into panel (4) with hardware **F**.
(Repeat 3 times for each hardware.)



SCREWDRIVER
REQUIRED

CODING

- 133082

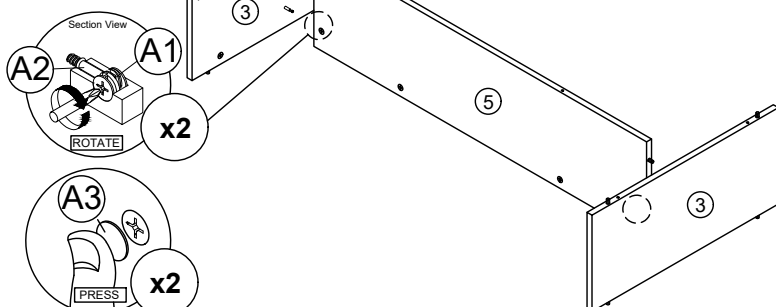
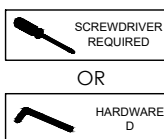


ISO 9001:2015
Reg. No. 00705-1-007-1-Q003

nuhoom.com

STEP 7

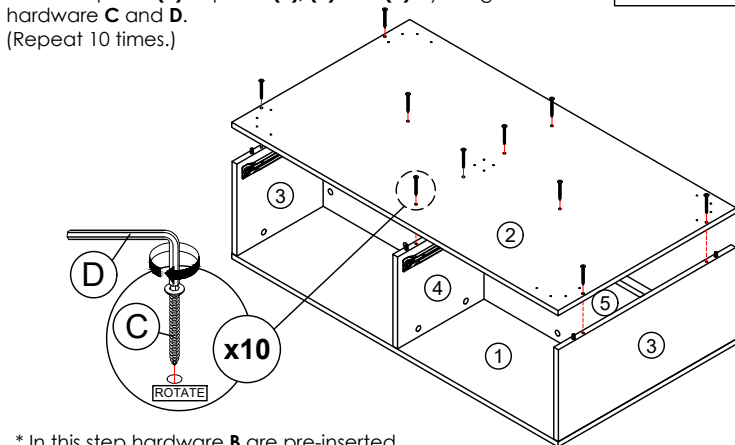
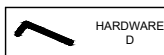
- Attach panel (3) to panel (5).
- Insert all hardware A2 into A1.
- Rotate all A1 until tight.
- Apply A3 onto all A1.
- (Repeat 2 times.)



* In this step hardware A1, A2 and B are pre-inserted.

STEP 9

- Connect panel (2) to panel (3), (4) and (5) by using hardware C and D.
- (Repeat 10 times.)

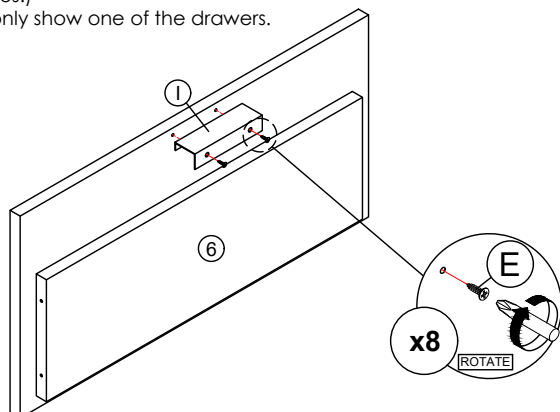


* In this step hardware B are pre-inserted.

STEP 11

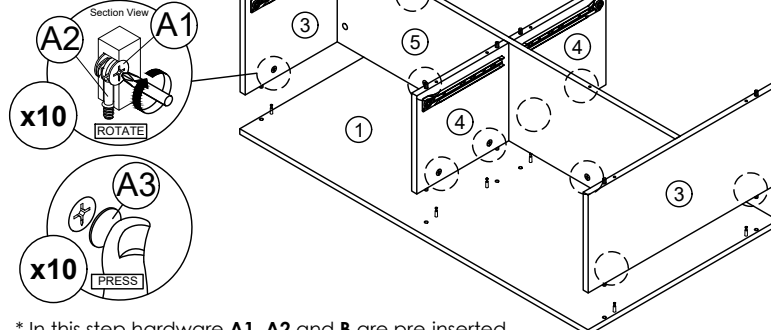
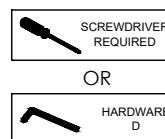
- Fix hardware I onto panel (6) by using hardware E.
- (Repeat 8 times.)

* In this step only show one of the drawers.



STEP 8

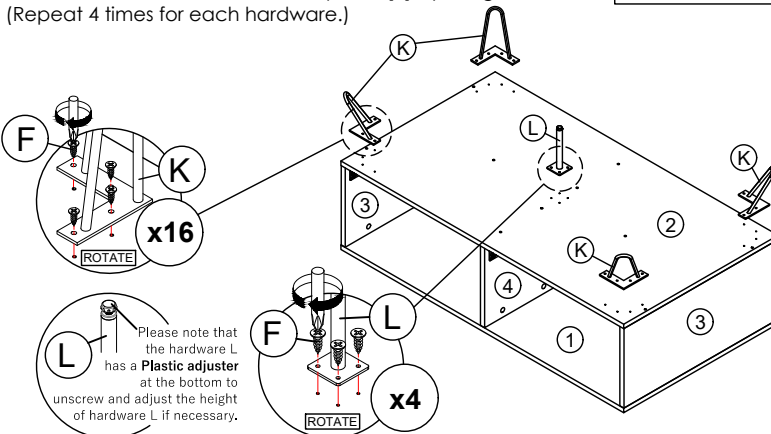
- Attach panel (1) to panel (3), (4) and (5).
- Insert all hardware A2 into A1.
- Rotate all A1 until tight.
- Apply A3 onto all A1.
- (Repeat 10 times.)



* In this step hardware A1, A2 and B are pre-inserted.

STEP 10

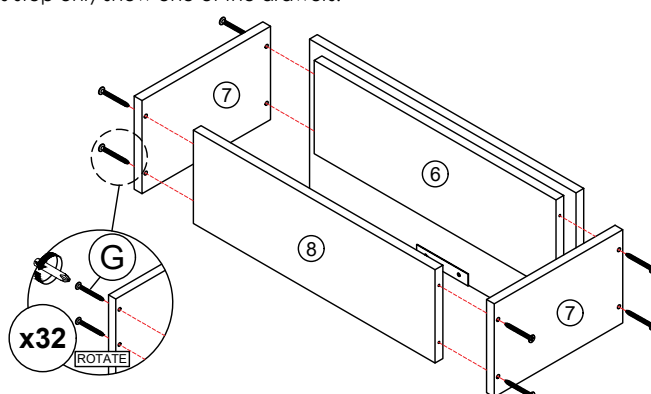
- Assemble hardware K and L onto panel (2) by using hardware F.
- (Repeat 4 times for each hardware.)



STEP 12

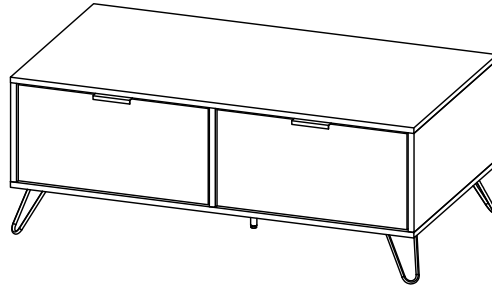
- Assemble panel (7) to panel (6) and (8) by using hardware G.
- (Repeat 32 times.)

* In this step only show one of the drawers.



CODING

- 133082



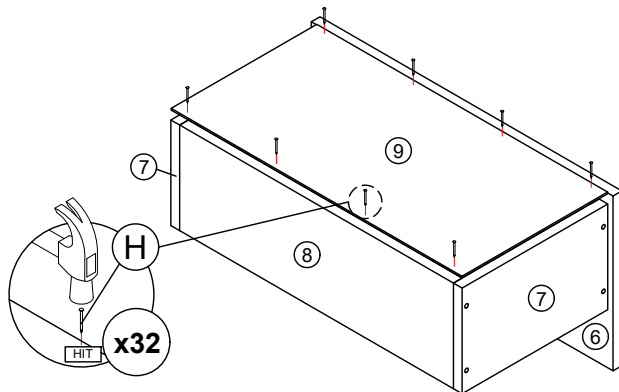
ISO 9001:2015
Reg. No. 00705-1-2017-1-Q005

nuhoom.com

STEP 13

Assemble panel (9) to entire body with hardware H.
(Repeat 32 times.)

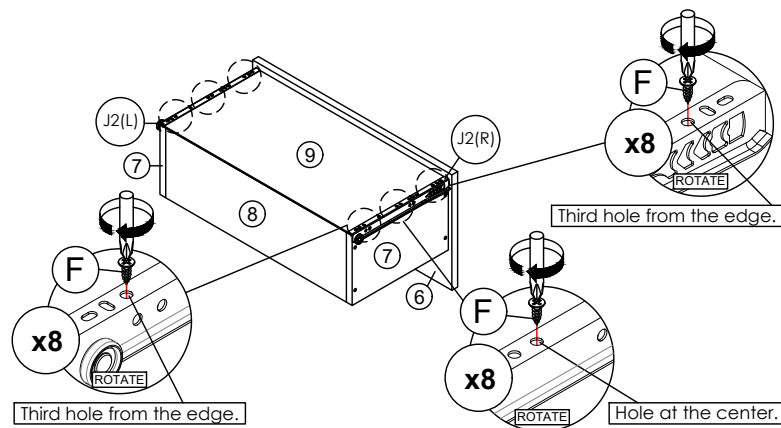
* In this step only show one of the drawers.



STEP 14

Assemble hardware J2 (L/R) to panel (9) by using hardware F.
(Repeat 3 times for each hardware.)

* In this step only show one of the drawers.



*Hardware J2 (L/R) shall be leaning against panel (6) when assembling.

STEP 15

Put all the drawer in place along the drawer slides.

