

CODING
- 131140



ISO 9001:2015
Reg. No. 000435-1-007-1-QMS

nuhoom.com

Read the instructions carefully. Remove all the wrappings, staples and straps from the carton. Refer to the hardware and furniture part list for guidance. Make sure that you have all the parts before you start assembling. Place all the wooden furniture parts on a clean, flat and soft surface, such as a carpet or rubbermat to prevent scratches.

CAUTION
KEEP ALL THE PARTS OUT OF CHILDREN'S REACH.

PART LIST		QTY
1	TOP PANEL	1 PC
2	BOTTOM PANEL	1 PC
3	SIDE PANEL (L)	1 PC
4	SIDE PANEL (R)	1 PC
5	MIDDLE PANEL	1 PC
6	BACK PANEL	1 PC
7	DRAWER PANEL	1 PC
8	DRAWER BACK	1 PC
9	DRAWER SIDE (L)	1 PC
10	DRAWER SIDE (R)	1 PC
11	DRAWER BOTTOM	1 PC
12	APRON-SHORT	2 PCS
13	APRON-LONG	2 PCS

HARDWARE			
A	MINI FIX	A1 A2 A3	16 SETS
B	M8 X 30MM WOOD DOWEL		26 PCS
C	M6 X 50MM CSK CAP WOOD SCREW		6 PCS
D	ALLEN KEY M4		1 PC
E	M3.5 X 16MM C.B SCREW		12 PCS
F	M4 X 38MM C.B SCREW		4 PCS
G	M4 X 65MM C.B SCREW		8 PCS
H	5/8 PVC NAIL LEG		4 PCS
I	12" DRAWER SLIDE	I1 (L/R) I2 (L/R)	1 SETS

SELF-PREPARED TOOLS: Tools below are NOT included in package.

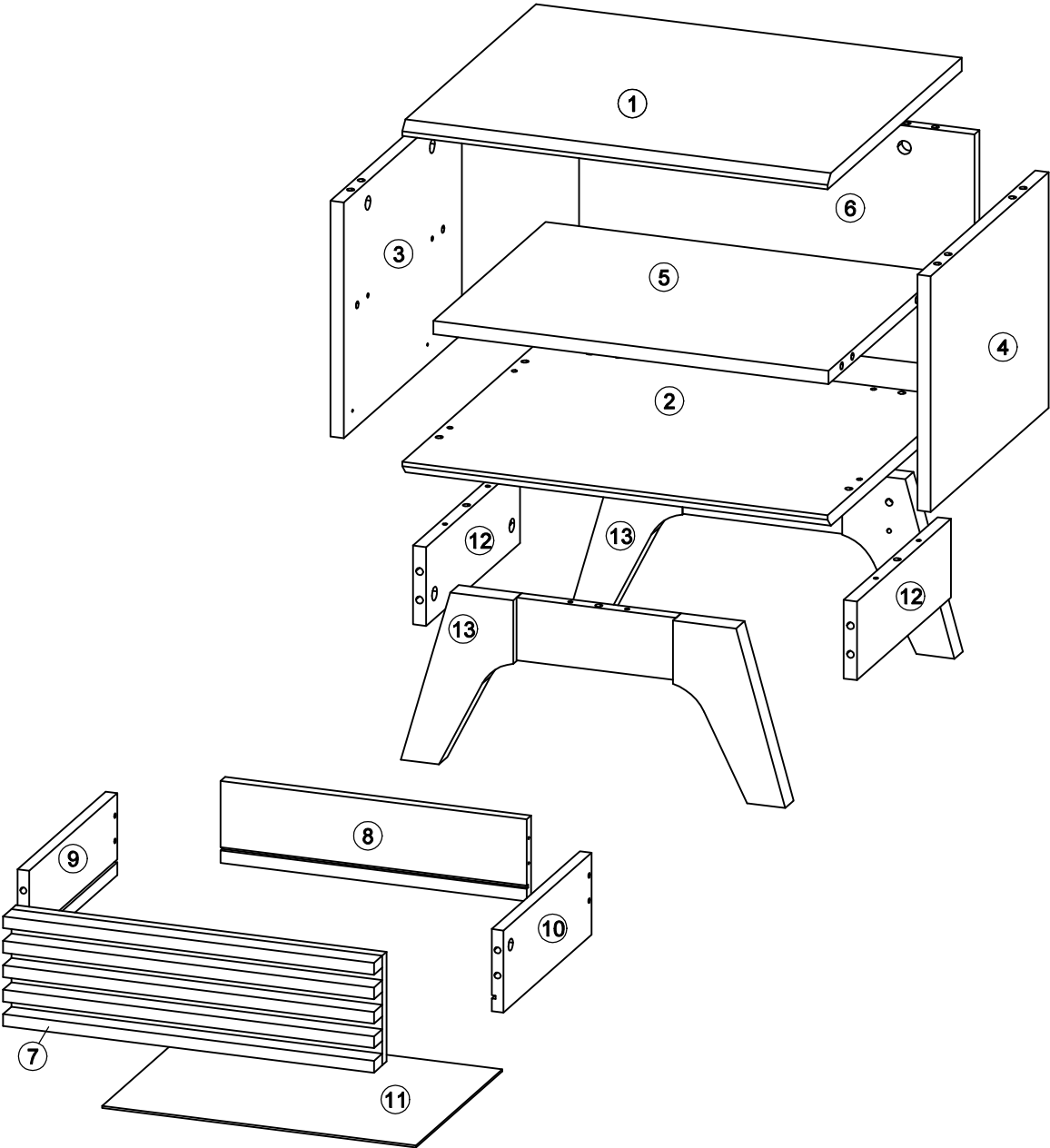
SCREWDRIVER	HAMMER
-------------	--------

CODING
- 131140



ISO 9001:2015
Reg. No. 000435-1-047-1-QMS

nuhoom.com



CODING
- 131140

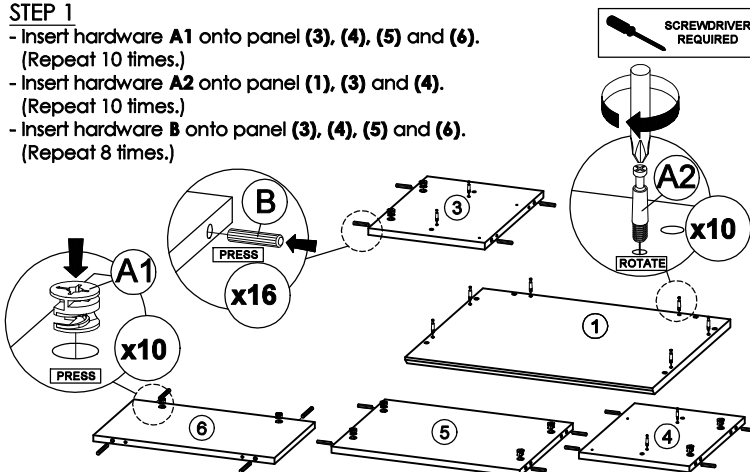


ISO 9001:2015
Reg. No. 000435-1-MY-1-QMS

nuhoom.com

STEP 1

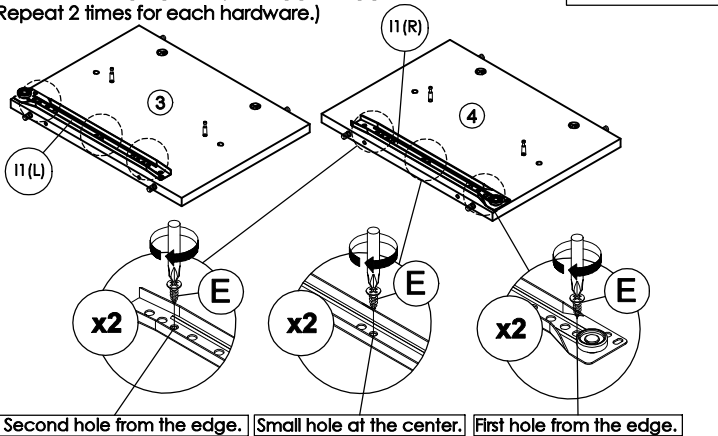
- Insert hardware **A1** onto panel **(3), (4), (5)** and **(6)**.
(Repeat 10 times.)
- Insert hardware **A2** onto panel **(1), (3)** and **(4)**.
(Repeat 10 times.)
- Insert hardware **B** onto panel **(3), (4), (5)** and **(6)**.
(Repeat 8 times.)



* Ensure the arrows on hardware **A1** point towards mounting positions.

STEP 3

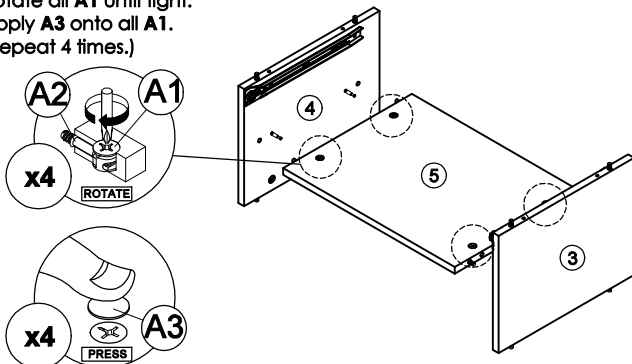
- Fix hardware **I1(L/R)** onto panel **(3)** and **(4)**.
(Repeat 2 times for each hardware.)



Second hole from the edge. Small hole at the center. First hole from the edge.

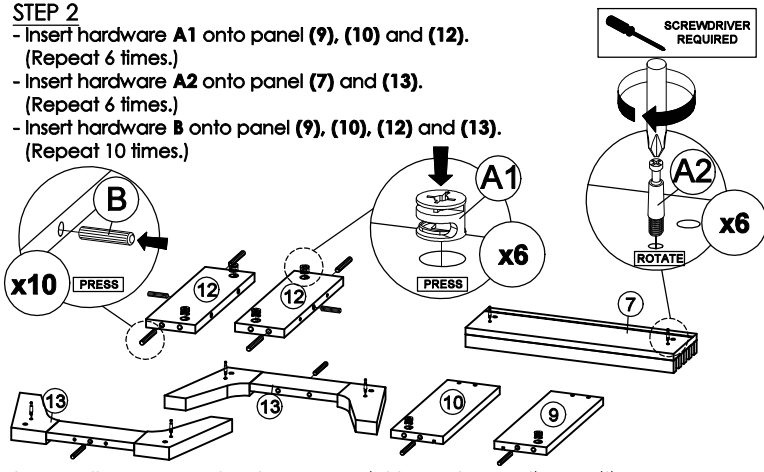
STEP 5

- Attach panel **(3)** and **(4)** to panel **(5)**.
- Insert all hardware **A2** into **A1**.
- Rotate all **A1** until tight.
- Apply **A3** onto all **A1**.
(Repeat 4 times.)



STEP 2

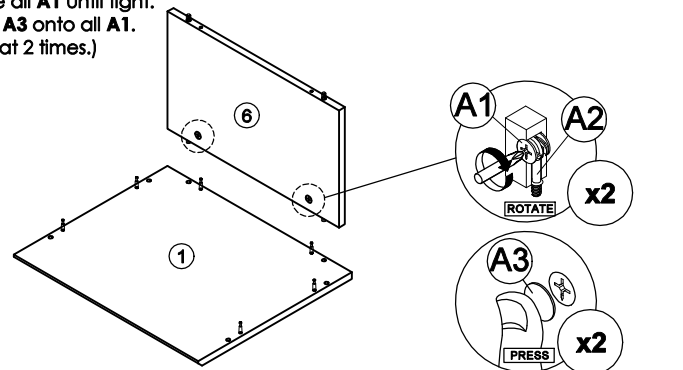
- Insert hardware **A1** onto panel **(9), (10)** and **(12)**.
(Repeat 6 times.)
- Insert hardware **A2** onto panel **(7)** and **(13)**.
(Repeat 6 times.)
- Insert hardware **B** onto panel **(9), (10), (12)** and **(13)**.
(Repeat 10 times.)



* Ensure the arrows on hardware **A1** point towards mounting positions.

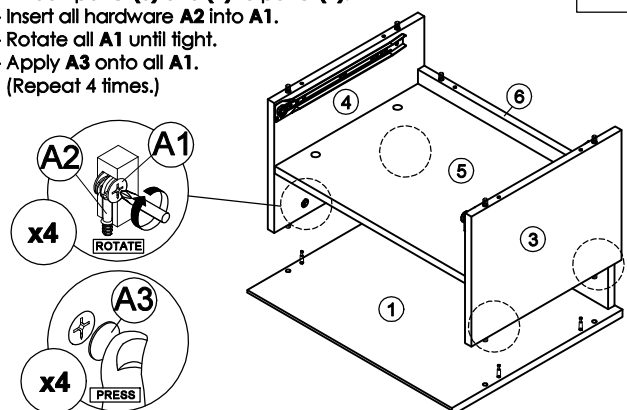
STEP 4

- Attach panel **(6)** to panel **(1)**.
- Insert all hardware **A2** into **A1**.
- Rotate all **A1** until tight.
- Apply **A3** onto all **A1**.
(Repeat 2 times.)



STEP 6

- Attach panel **(3)** and **(4)** to panel **(1)**.
- Insert all hardware **A2** into **A1**.
- Rotate all **A1** until tight.
- Apply **A3** onto all **A1**.
(Repeat 4 times.)



CODING
- 131140

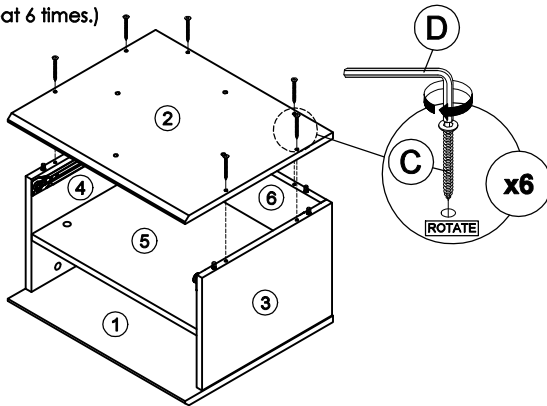


ISO 9001:2015
Reg. No. 000435-1-MY-1-QMS

nuhoom.com

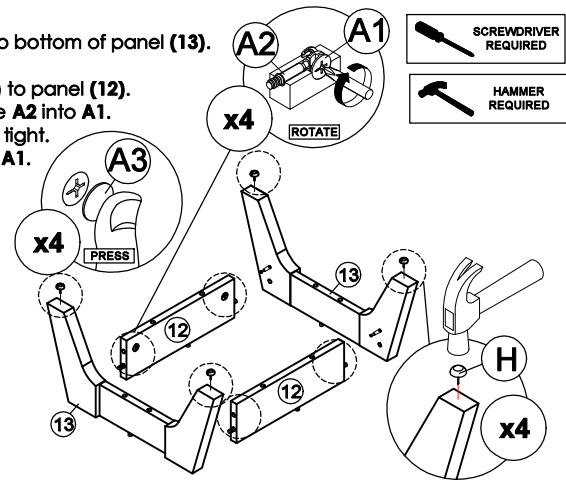
STEP 7

- Connect panel (2) to panel (3), (4) and (6) by using hardware C and D.
(Repeat 6 times.)



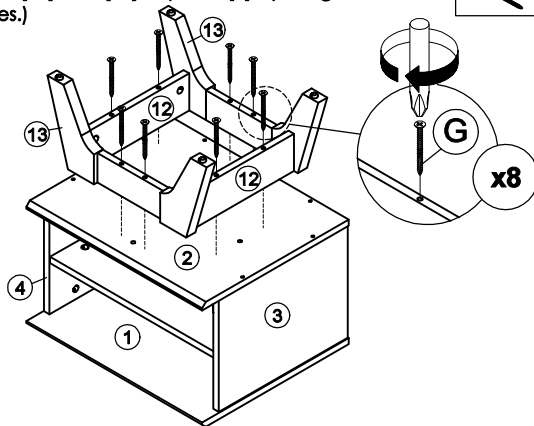
STEP 8

- Hit hardware H into bottom of panel (13).
(Repeat 4 times.)
- Attach panel (13) to panel (12).
- Insert all hardware A2 into A1.
- Rotate all A1 until tight.
- Apply A3 onto all A1.
(Repeat 4 times.)



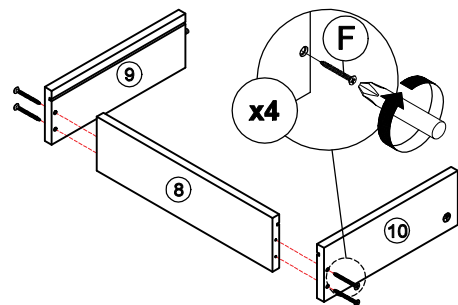
STEP 9

- Connect panel (12) and (13) to panel (2) by using hardware G.
(Repeat 8 times.)



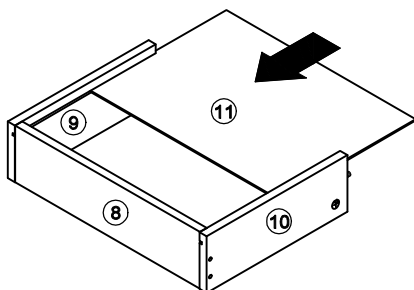
STEP 10

- Assemble panel (9) and (10) with panel (8) by using hardware F.
(Repeat 4 times for each drawer.)



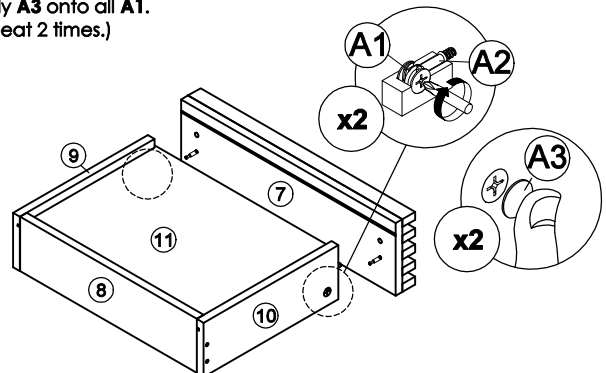
STEP 11

- Assemble panel (11) along the slot.



STEP 12

- Attach panel (7) to panel (9) and (10).
- Insert all hardware A2 into A1.
- Rotate all A1 until tight.
- Apply A3 onto all A1.
(Repeat 2 times.)



CODING
- 131140

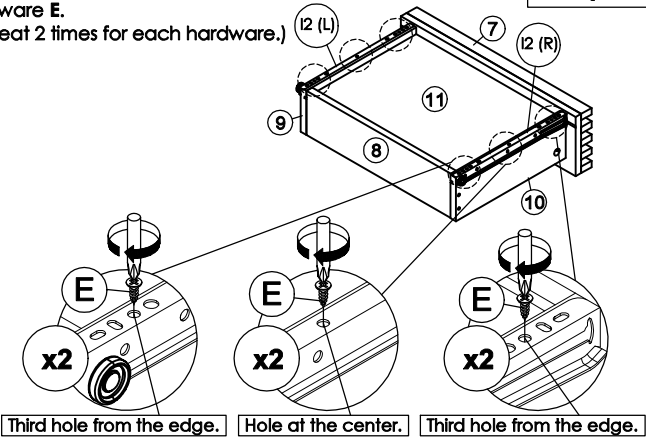


ISO 9001:2015
Reg. No. 000435-1-001-1-QM8

nuhoom.com

STEP 13

- Assemble hardware **I2 (L/R)** to panel **(9)** and **(10)** by using hardware **E**.
(Repeat 2 times for each hardware.)



STEP 14

- Put all the drawer in place along the drawer slides.

