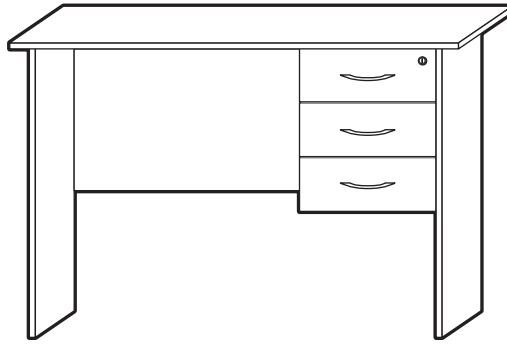


CODING

- 124034
- 124076
- 1129060



ISO 9001:2015
Reg. No. 000435-1-MY-1-QMS

nuhoom.com

Read the instructions carefully. Remove all the wrappings, staples and straps from the carton. Refer to the hardware and furniture part list for guidance. Make sure that you have all the parts before you start assembling. Place all the wooden furniture parts on a clean, flat and soft surface, such as a carpet or rubbermat to prevent scratches.

CAUTION

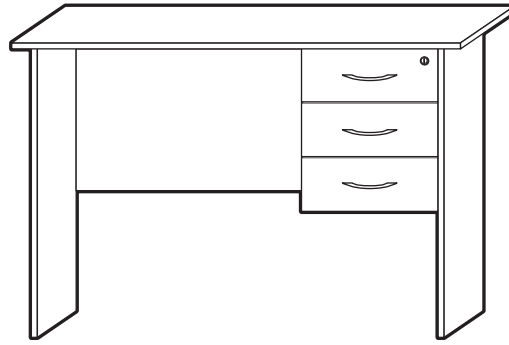
KEEP ALL THE PARTS OUT OF CHILDREN'S REACH.

ITEM	HARDWARE LIST		QTY
①		M5 x 40mm JCBCW Screw	8
②		M4 x 32mm Chipboard Screw	24
③		M4 x 25mm Chipboard Screw	6
④		M3.5 x 16mm Chipboard Screw	12
⑤		Minifix Pin	5
⑥		Minifix Cam	5
⑦		Square Leg	4
⑧		Drawer Lock	1
⑨		PVC Drawer Slide	6
⑪		Handle	3
⑪		L Bracket	1
⑫		Allen Key	1

ITEM	PART LIST		QTY
Ⓐ	Centre Panel		1
Ⓑ	Bottom Panel		1
Ⓒ	Back Panel		1
Ⓓ	Left Side Panel		1
Ⓔ	Right Side Panel		1
Ⓕ	Desktop Panel		1
Ⓖ	Drawer Front Panel		3
Ⓗ	Drawer Side Panel		6
Ⓘ	Drawer Back Panel		3
Ⓙ	Drawer Bottom Panel		3

CODING

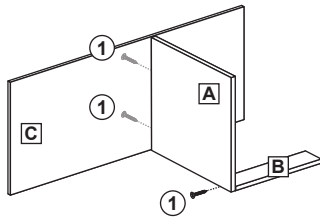
- 124034
- 124076
- 1129060



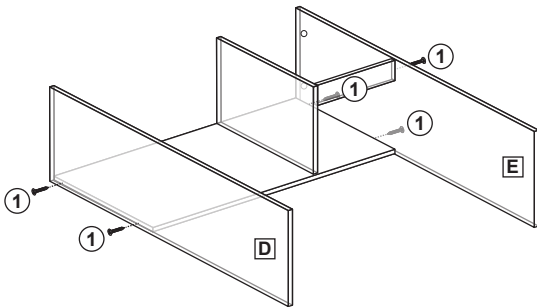
ISO 9001:2015
Reg. No. 000435-1-MY-1-QMS

nuhoom.com

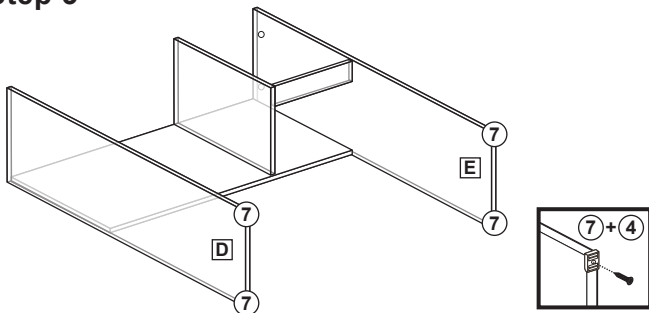
Step 1



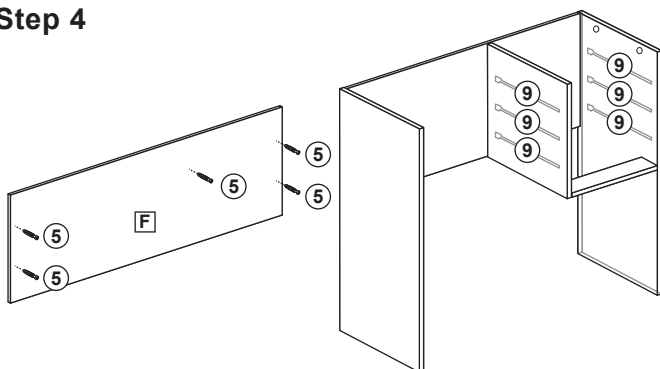
Step 2



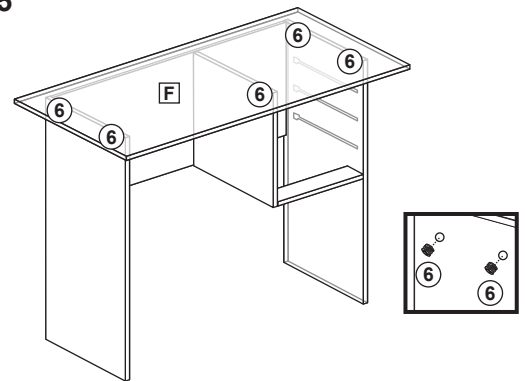
Step 3



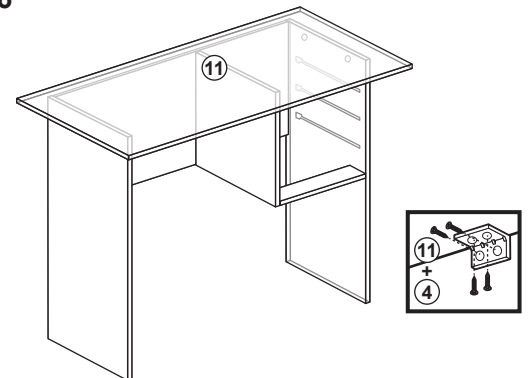
Step 4



Step 5



Step 6



Step 7

